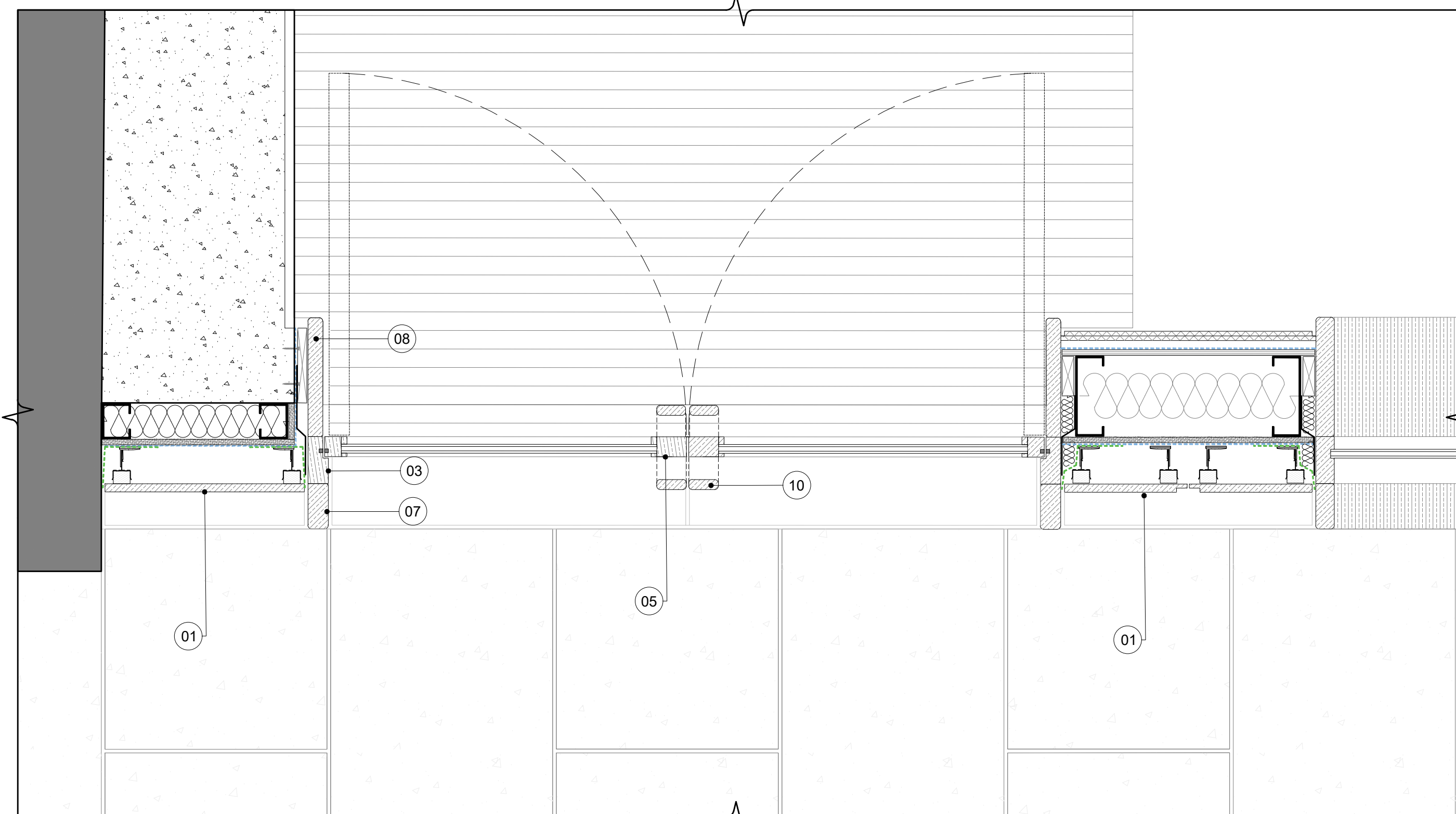


**01** **TIMBER DOUBLE ENTRANCE DOORS**  
**A8100** ELEVATION

**BB** **TIMBER DOUBLE ENTRANCE DOORS**  
**A8100** SECTION

LEGEND

1. New high pressure laminate cladding
2. New tiled upstand/skirting
3. New treated hardwood timber door frame
4. New treated hardwood timber window frame
5. New treated hardwood timber door leaf
6. New treated hardwood glazing bead
7. New treated hardwood joinery
8. New reated hardwood joinery
9. New double glazed unit
10. New pull handle
11. New brushed stainless steel kick plate
12. New brushed stainless steel access control panel
13. New applied metal signage
14. New solid treated timber fixed panel
15. New fire rated metal door system
16. New fire rated metal door and fixed glazing system
17. New fire rated metal window system
18. New fire rated metal window and panel system
19. New stone step to terrace door
20. New external treated timber decking
21. New flat plate steel balustrade
22. New flat plate steel gate
23. New coping
24. New tile finish to existing upstand



**AA** **TIMBER DOUBLE ENTRANCE DOORS**  
**A8100** PLAN

Drawing Title

EXTERNAL DETAILS  
GROUND FLOOR TIMBER DOUBLE  
ENTRANCE DOORS (WG-01)

Drawn By	Checked By	Scale @ A1	Scale @ A3
US	JS	1:10	1:20

Project No.	Drawing No.	Revision
dMFK 2271	A8100	-

0.0 0.1 0.2 0.3 0.4 0.5  
metre

**dMFK**

The Old Library, 119 Chalmley Gardens, London. NW6 1AA  
t: 0207 435 1144 e: info@dmfk.co.uk w: www.dmfk.co.uk

Client  
DERWENT LONDON

Project  
45 WHITFIELD STREET, FITZROVIA,  
LONDON, W1T 4HD