


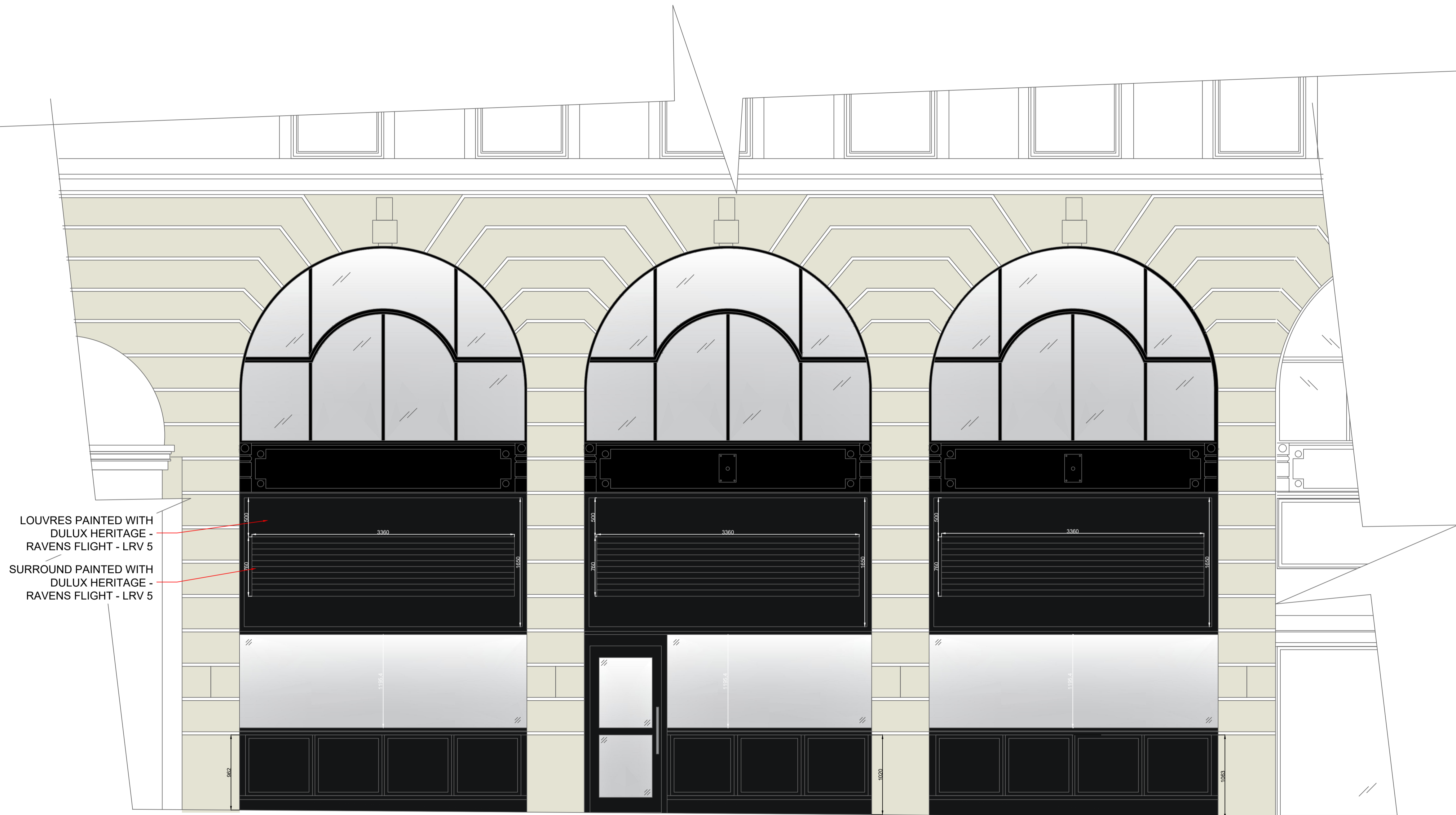
NOTES:

KEY

	760x3360 TIMBER LOUVRE PAINTED WITH DULUX HERITAGE - RAVENS FLIGHT - LRV 5
-------------------------------------------------------------------------------------	-------------------------------------------------------------------------------------

DETAILS:

- ALL TO MATCH ADJACENT PROPERTY "ALL BAR ONE" - CORNER OF REMNANT STREET & KINGSWAY
- CASEMENT, FRAMING & SILLS - MERANTI HARDWOOD WITH WPB AND HARDWOOD MOULDINGS
- ABOVE PANELS FRAMING - MERANTI HARDWOOD WITH WPB PLY INSERTS
- COLOUR - DULUX HERITAGE - RAVENS FLIGHT - LRV 5



LOUVRES PAINTED WITH
DULUX HERITAGE -
RAVENS FLIGHT - LRV 5

SURROUND PAINTED WITH
DULUX HERITAGE -
RAVENS FLIGHT - LRV 5

REV	DATE	AMENDMENTS
E	09/03/2023	LOUVRE POSITIONS UPDATED
D	03/03/2023	LOUVRES REVERTED TO ORIGINAL DESIGN
C	17/02/2023	LOUVRE POSITIONS UPDATED
B	17/01/2023	LOUVRES UPDATED
A	13/01/2023	ALTERNATIVE LOUVRE OPTION CREATED



The Old Barn | Scrips Business Park | Cut Hedge Lane
Coggeshall | Essex CO6 1RL

PROPOSED
SHOPFRONT
ELEVATION

PROJECT:	KINGSWAY PROJECT
ADDRESS:	54 KINGSWAY HOLBORN LONDON WC2B 6EP
DWG NO.:	KP-001
DWG TITLE:	PROPOSED FRONTAGE
DWG DATE:	09/03/2023
DWG SIZE:	1:30 @ A1
DRAWN:	J.P.
CHECKED:	A.E.
ISSUE:	

SCALE BAR 1:30

