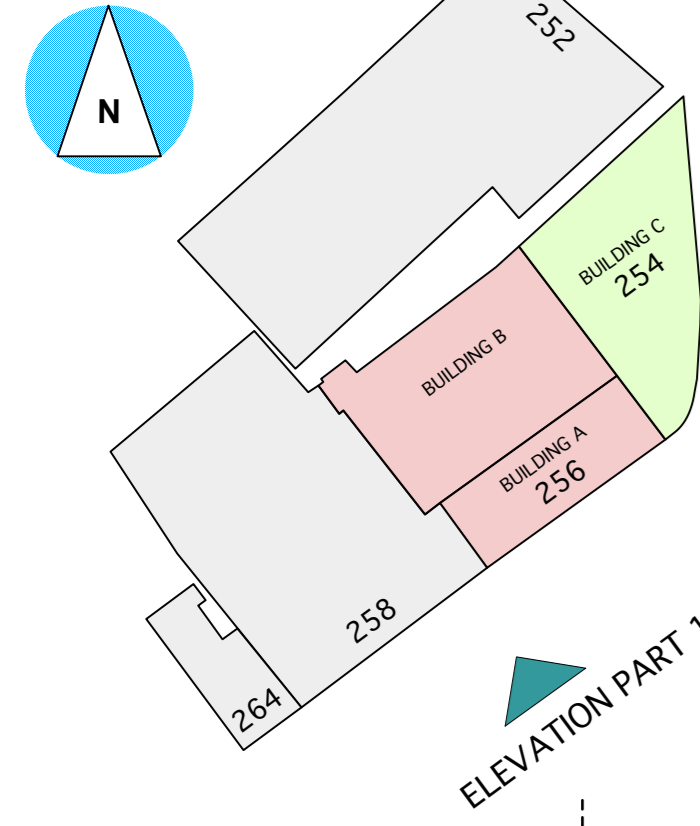


Key Plan



Key

To be demolished



ELEVATION PART 1
(SEE KEY PLAN)

264 BELSIZE ROAD

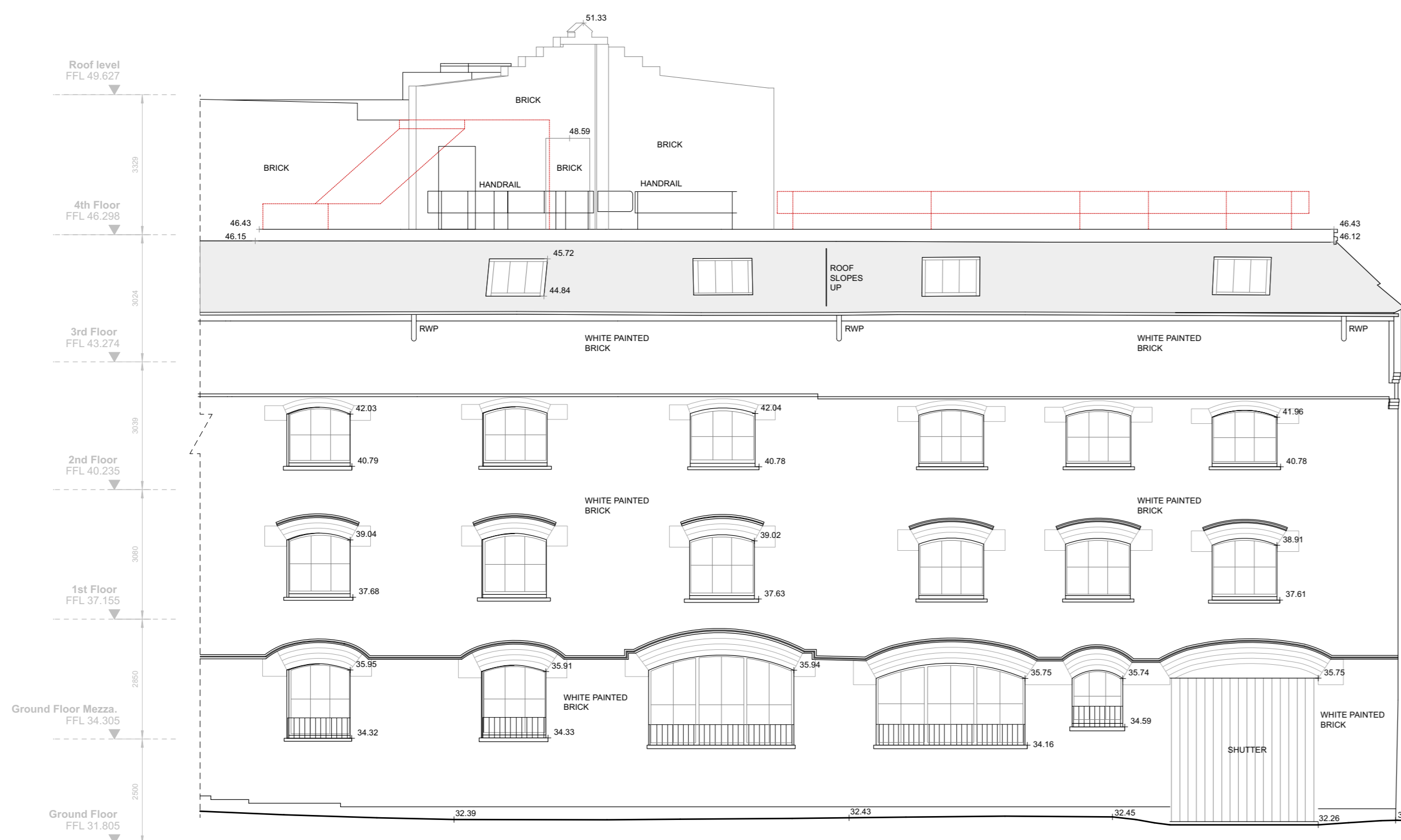
258 BELSIZE ROAD

APPLICATION SITE

256 BELSIZE ROAD

254 BELSIZE ROAD

TO CONTINUE ON
ELEVATION PART 2
BELOW



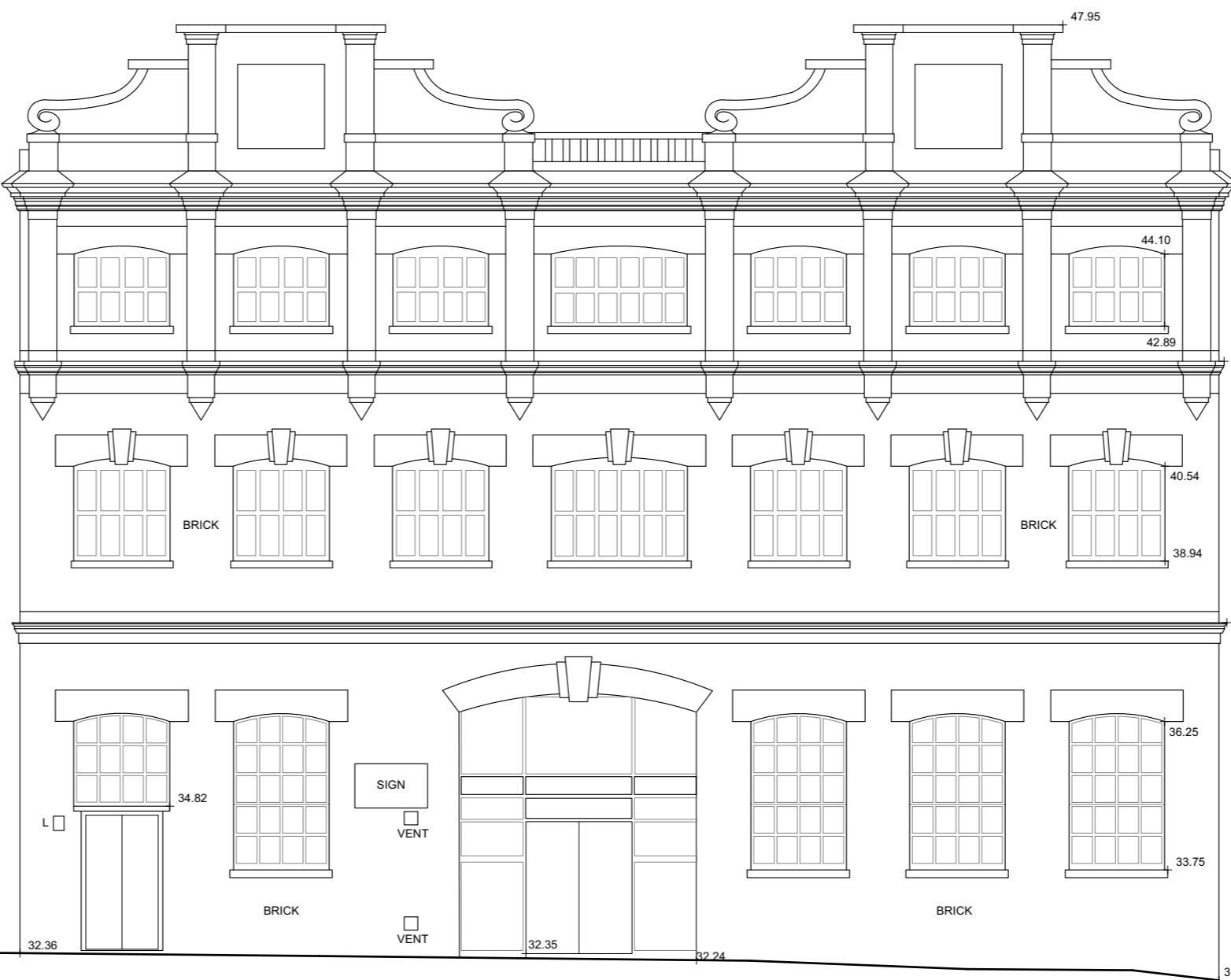
254 BELSIZE ROAD

APPLICATION SITE

252 BELSIZE ROAD

ELEVATION PART 2
(SEE KEY PLAN)

Datum 30.00m AOD



- Rev E 23.02.27 Railing removed
- Rev D 23.01.13 Planning application Issue
- Rev C 22.07.25 Planning application Issue
- Rev B 22.06.23 Draft Planning application
- Rev A 22.05.10 Revised Elevations following Pre-App Meeting with Camden Planning Dept.

PLANNING APPLICATION

A1 1:100 @ A1
1:200 @ A3

 Alan Power Architects Ltd 13 Northam Road London, W11 2BP Tel: 020 7229 9175 Fax: 020 7221 4172	DRAWING South-East East Elevations as proposed	DRWG. N° 625 - 110
	PROJECT 254-256 BELSIZE RD LONDON NW6 4BT	Rev. E
	CLIENT EMPIRE COMMUNICATIONS LTD	Scale 1:100 @ A1 1:200 @ A3
		Date June 2022

DO NOT SCALE FROM THIS DRAWING. ALL DIMENSIONS TO BE CHECKED ON SITE AND DISCREPANCIES REPORTED TO ARCHITECT