

# Planning Statement

7 Branch Hill, NW3 7LT  
12021

07/03/2023



## Introduction

Marek Wojciechowski Architects have prepared this planning statement for 7 Branch Hill, NW3 to accompany the associated drawings.

Works related to the above redevelopment include (but are not limited to):

- Installation of a external metal staircase from ground floor to first floor;
- Installation of a metal balustrade at ground floor;
- Installation of an external glazed canopy to the secondary ground floor entrance.

Each of these proposals will be addressed in this document.

## 1.0 External Metal Staircase

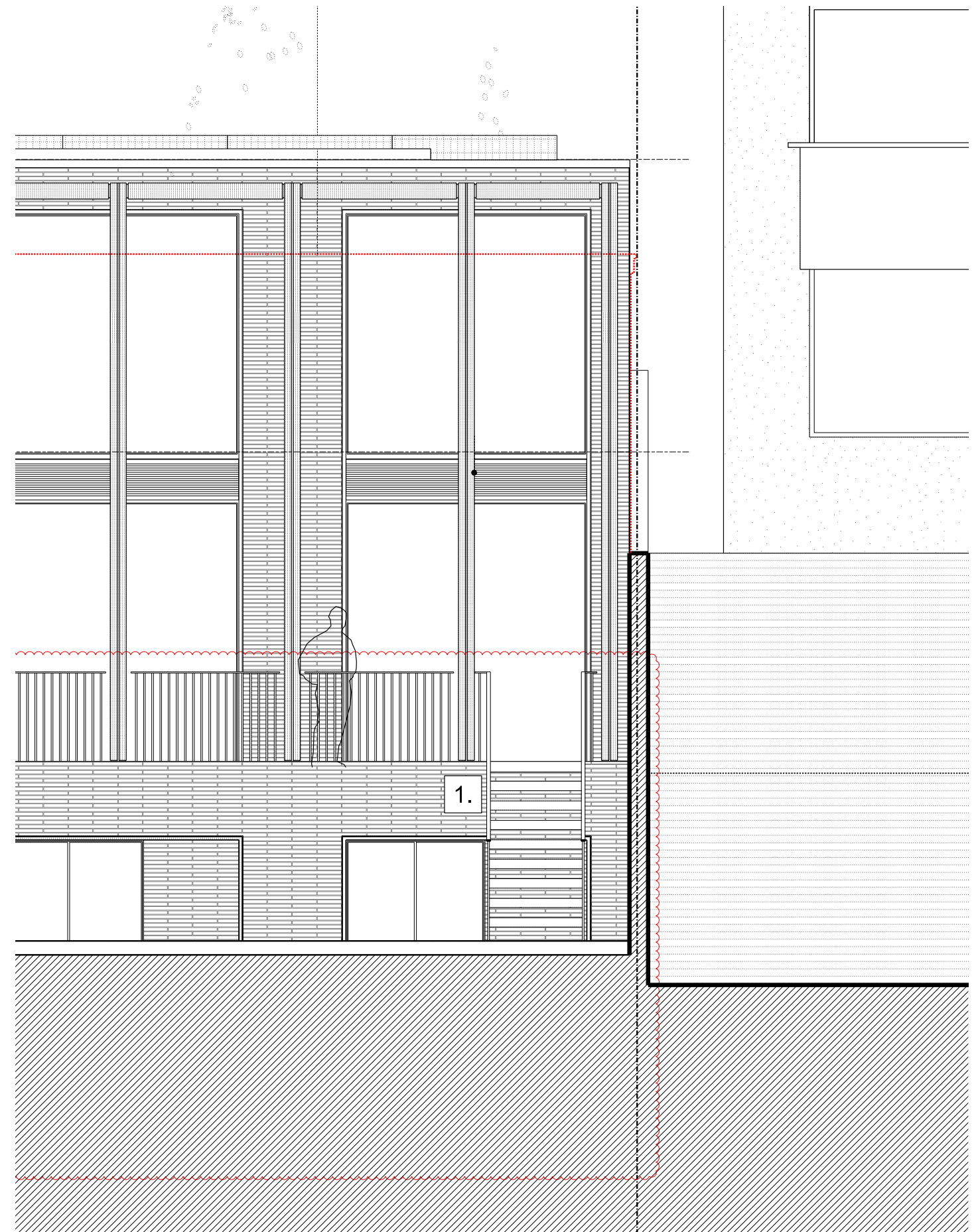
An external metal staircase is proposed from the ground floor driveway to the first floor external terrace, to allow direct access to the front garden.

This metal stair will be powder coated to match the existing metal balustrades.



### Current condition

Temporary staircase from ground floor to first floor external terrace, to be replace with proposed metal staircase (powder coated to match existing external balustrades)



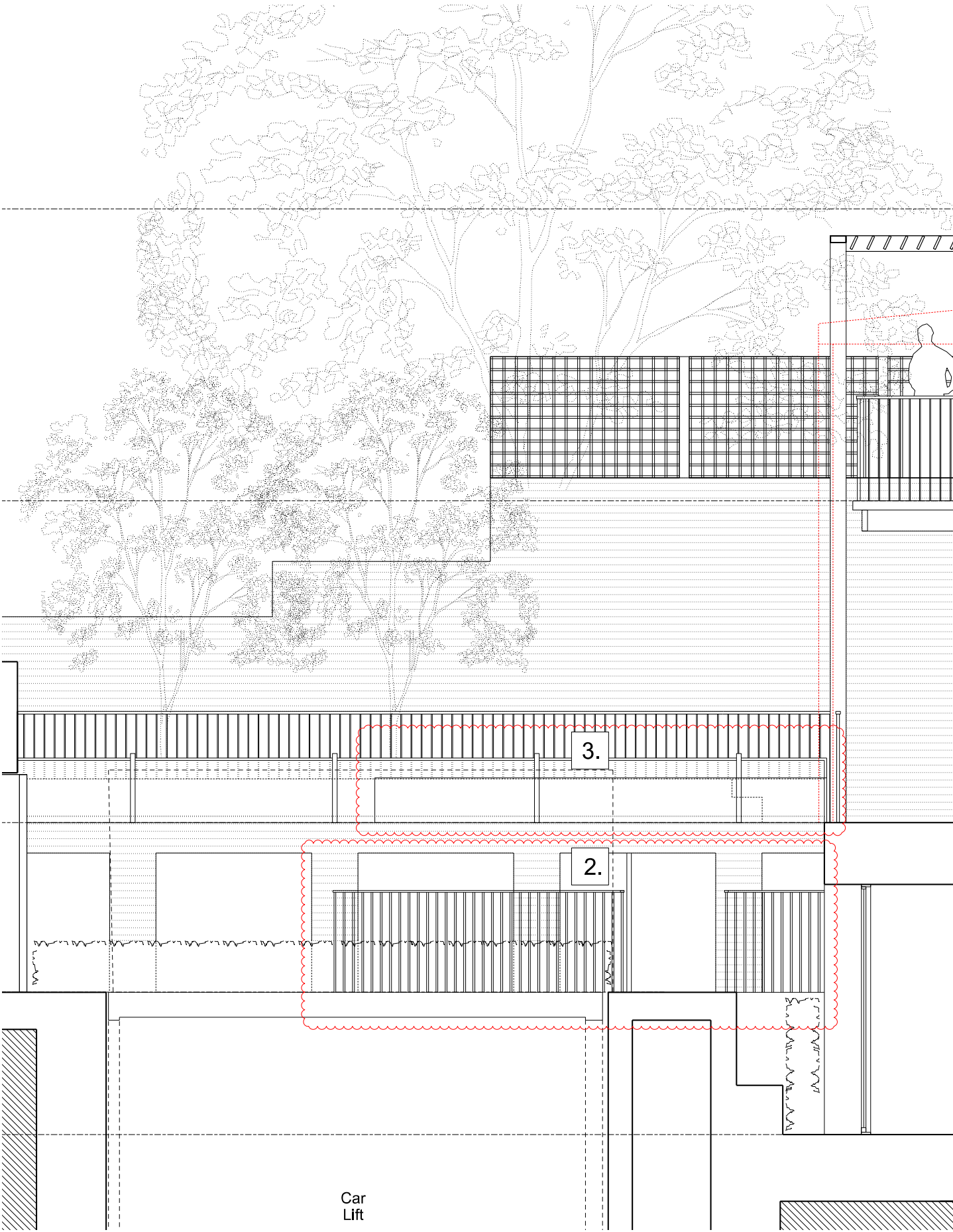
### Proposed condition

Proposed metal staircase powder coated to match existing external balustrades



**Current condition**  
A temporary timber balustrade has been installed, which will be replaced by the proposed external metal balustrade. To be powder coated to match the existing metal balustrades.

An external metal balustrade is proposed to the left hand side of the driveway to provide protection from falling when entering/ exiting vehicles.



**Proposed condition**  
Proposed metal balustrade, powder coated to match the existing metal balustrades. (indicated on the drawing above as No.2)



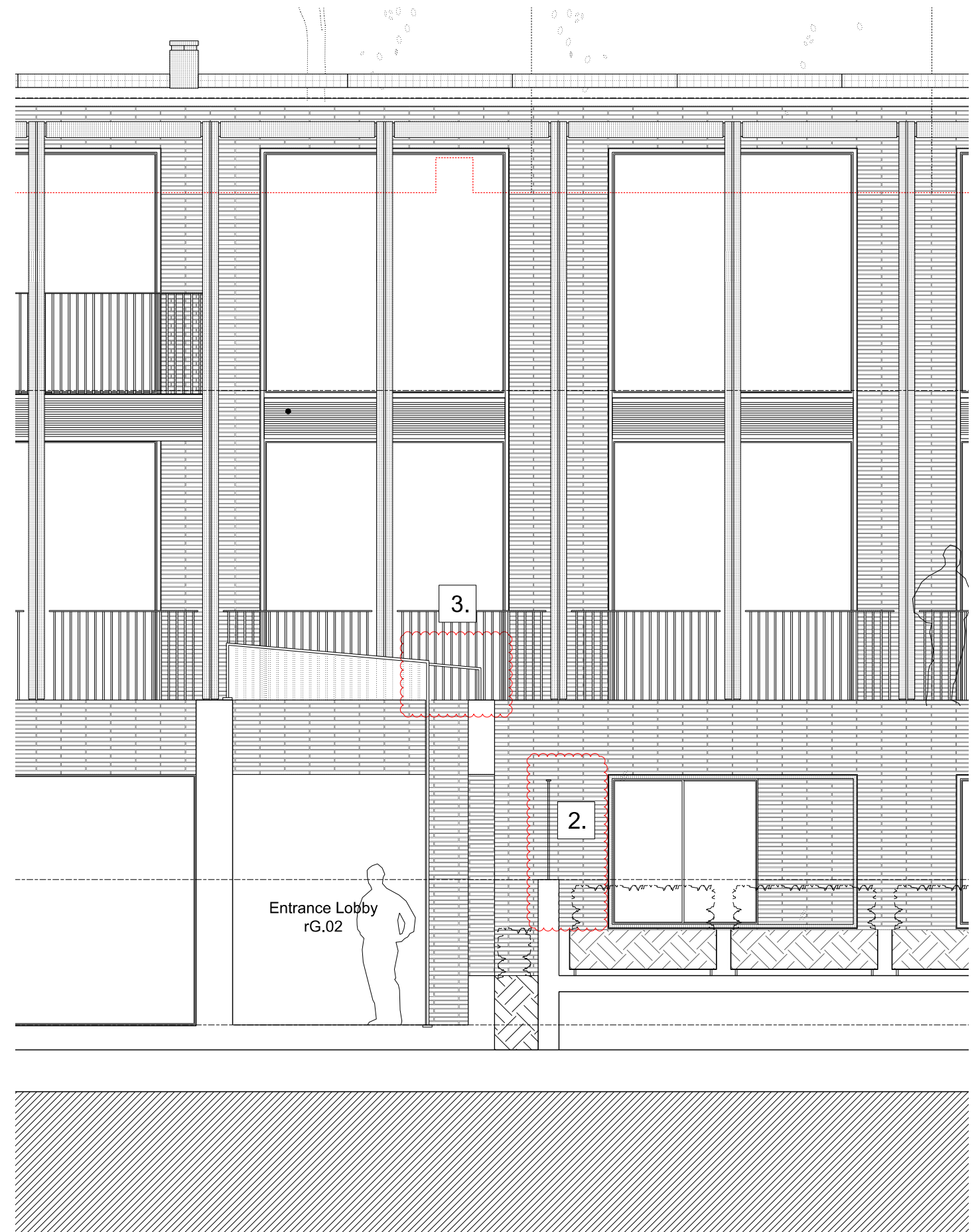


### 3.0 External Glazed Canopy

An external glazed canopy is proposed between the existing brick colonnade and existing glazed entrance walkway. This will provide an external covered area for the client when entering the house from the driveway.

#### Current condition

A temporary plastic cover has been installed above the side door - this will be replaced by the external glazed canopy.



#### Proposed condition

Proposed external glazed canopy, to match detail of existing glazed entrance hallway (indicated on the drawing above as No.3).