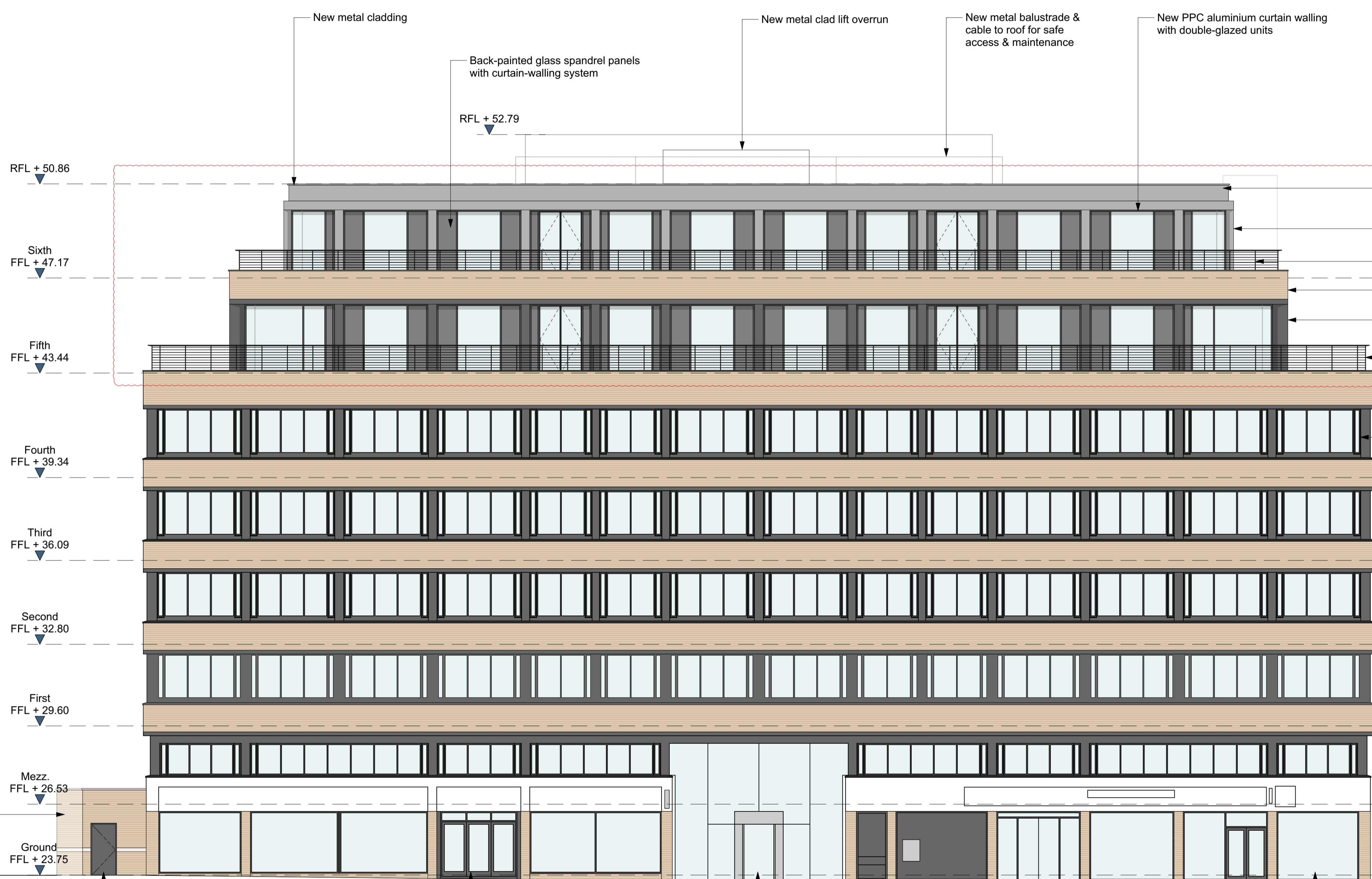
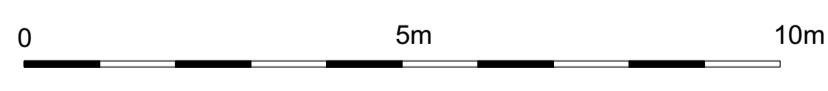


2 Key Plan
Scale: 1:500



- New metal cladding
- New metal clad fins
- New metal balustrade & cable
- New brick facade and metal capping to match existing building
- New metal clad fins
- New metal balustrade & cable
- Existing brick facade and metal capping retained
- Existing glazing and associated metal panelling and framing retained

1 Proposed South Elevation (Bernard St)
Scale: 1:100



Existing brick enclosure to be retained
HERBRAND STREET

MARCHMONT STREET

Mezz. FFL + 26.53
Ground FFL + 23.75

RFL + 50.86
Sixth FFL + 47.17
Fifth FFL + 43.44
Fourth FFL + 39.34
Third FFL + 36.09
Second FFL + 32.80
First FFL + 29.60

Back-painted glass spandrel panels with curtain-walling system

RFL + 52.79

New metal cladding

New metal clad lift overrun

New metal balustrade & cable to roof for safe access & maintenance

New PPC aluminium curtain walling with double-glazed units

New cycle access from ground floor within existing basement access

Existing retail retained and out of scope of proposed works

No proposed changes to office entrance and reception

Existing retail retained and out of scope of proposed works

All dimensions to be checked on site prior to commencement of any works, and/or preparation of any shop drawings.
Sizes of and dimensions to any structural or services elements are indicative only. See structural and service engineers drawings for actual sizes / dimensions.
This drawing to be read in conjunction with all other Architect's drawings, specifications and other Consultant's information.
All proprietary systems shown on this drawing are to be installed strictly in accordance with the Manufacturers/Suppliers recommended details.
Any discrepancies between information shown on this drawing and any other contract information or manufacturers/suppliers recommendations is to be brought to the attention of the Architect.

Revision	Date	Amendment
PL1	19/05/2021	Issued for Planning
PL2	22/09/2021	Canopy soffit panels amended
PL3	03/02/2023	Revisions as clouded

Date	May 2021	Project	40 Bernard Street	Job Ref.	356 BER
Scale	1:100@A1	Drawn	MW	Check	MH
Status	PLANNING	Client Ref	356 (GA) 201	Rev.	PL3
Hale Brown Architects Ltd. Unit 1.04, Edinburgh House, 170 Kennington Lane, London, SE11 5DP T: 020 3735 7442 E: mail@halebrown.com W: www.halebrown.com					

