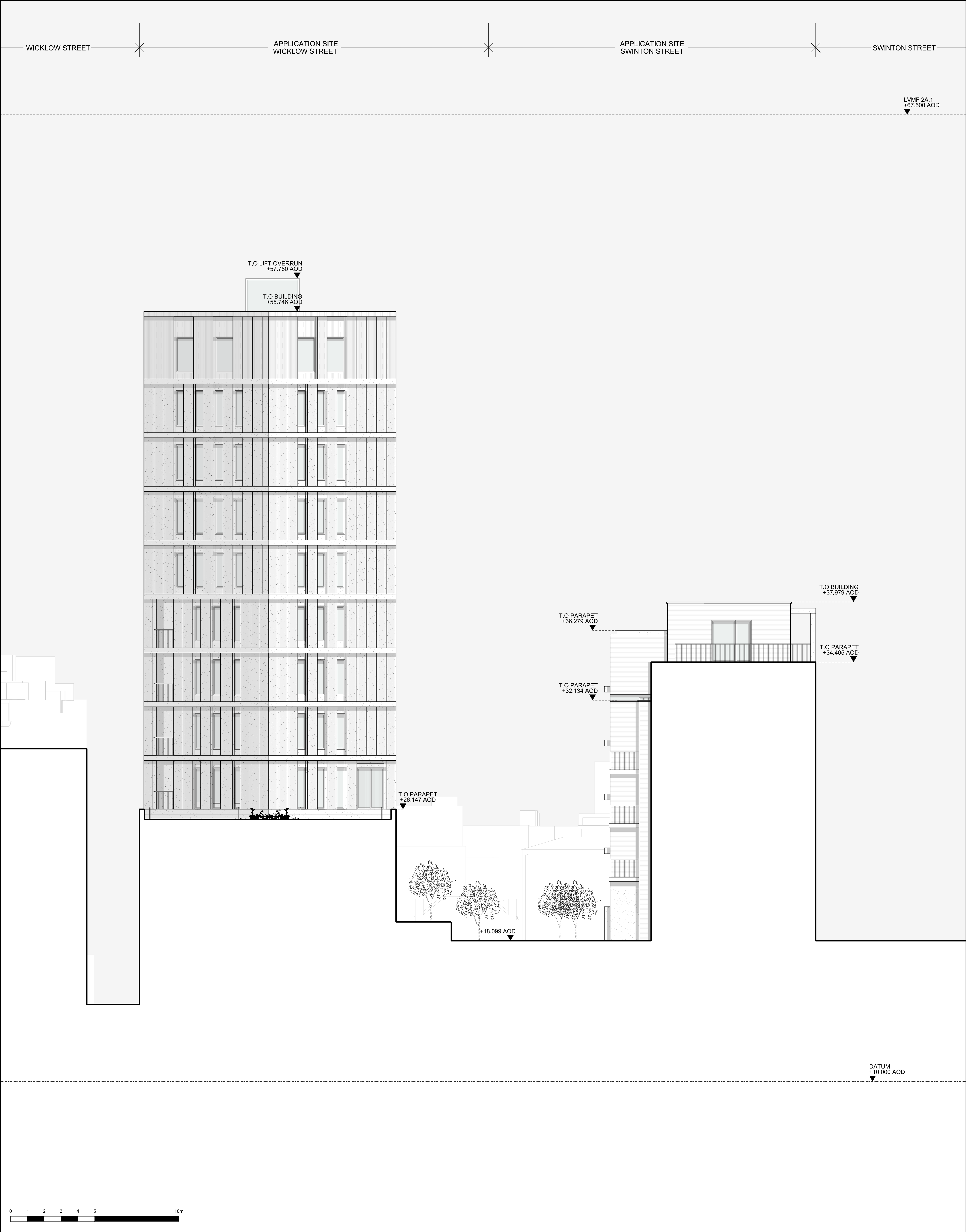


RESIDENTIAL BUILDINGS : EAST FACING ELEVATION				
KEY	P01 30/11/20 ISSUED FOR PLANNING	NOTE When this drawing is issued in uncontrolled CAD format it will be accompanied by a PDF version and is issued to enable the recipient to prepare their own documents / models / drawings for which they are solely responsible. The recipient should report all drawing errors, omissions and discrepancies to the architect. All dimensions should be checked on site by the contractor and such dimensions shall be the contractor's responsibility. Allford Hall Monaghan Morris Limited accepts no responsibility or liability for:- - any use of this drawing by parties other than the party for whom it was prepared or for purposes other than those for which it was prepared - any alterations or additions to or discrepancies arising out of changes to the background information on which the drawings are based that was current at the time of issue, and which occur to that information after it has been issued by AHMM - any loss or degradation of the information held in this drawing resulting from the translation from the original file format to any other file format or from the recipient's reading of it in any other programme or any version of the programme other than that which was used to prepare it - the accuracy of survey information provided by others or for any costs, claims, proceedings and expenses arising out of reliance on such information - any scaling from this drawing other than by the local planning authority solely for the purposes of the planning application to which it relates	LOCATION 	ALLFORD HALL MONAGHAN MORRIS ARCHITECTS Ltd MORELANDS, 5-23 OLD STREET LONDON EC1V 9HL TEL 020 7251 5261 FAX 020 7251 5123 WEB WWW.AHMM.CO.UK job title 330 GRAYS INN ROAD drawing title / location PROPOSED RESIDENTIAL ELEVATIONS RESIDENTIAL BUILDINGS - EAST FACING drawn by OU checked MH scale 1:100@A1; 1:200@A3 status PLANNING project 18116 zone 03 source A classification (00)_204 drawing no. P01 revision



RESIDENTIAL BUILDINGS : WEST FACING ELEVATION

KEY	REV DATE		NOTE	LOCATION	ALLFORD HALL MONAGHAN MORRIS					
	P01 30/11/20 ISSUED FOR PLANNING				ARCHITECTS Ltd MORELANDS, 5-23 OLD STREET LONDON EC1V 9HL TEL 020 7251 5261 FAX 020 7251 5123 WEB WWW.AHMM.CO.UK					
					job title 330 GRAYS INN ROAD					
					drawing title / location PROPOSED RESIDENTIAL ELEVATIONS RESIDENTIAL BUILDINGS - WEST FACING					
	drawn by	checked			scale	status				
	OU	MH			1:100@A1; 1:200@A3	PLANNING				
project	zone	source	classification	drawing no.	revision					
18116	03	A	(00)_205	P01						