

RESIDENTIAL BUILDINGS : EAST FACING ELEVATION

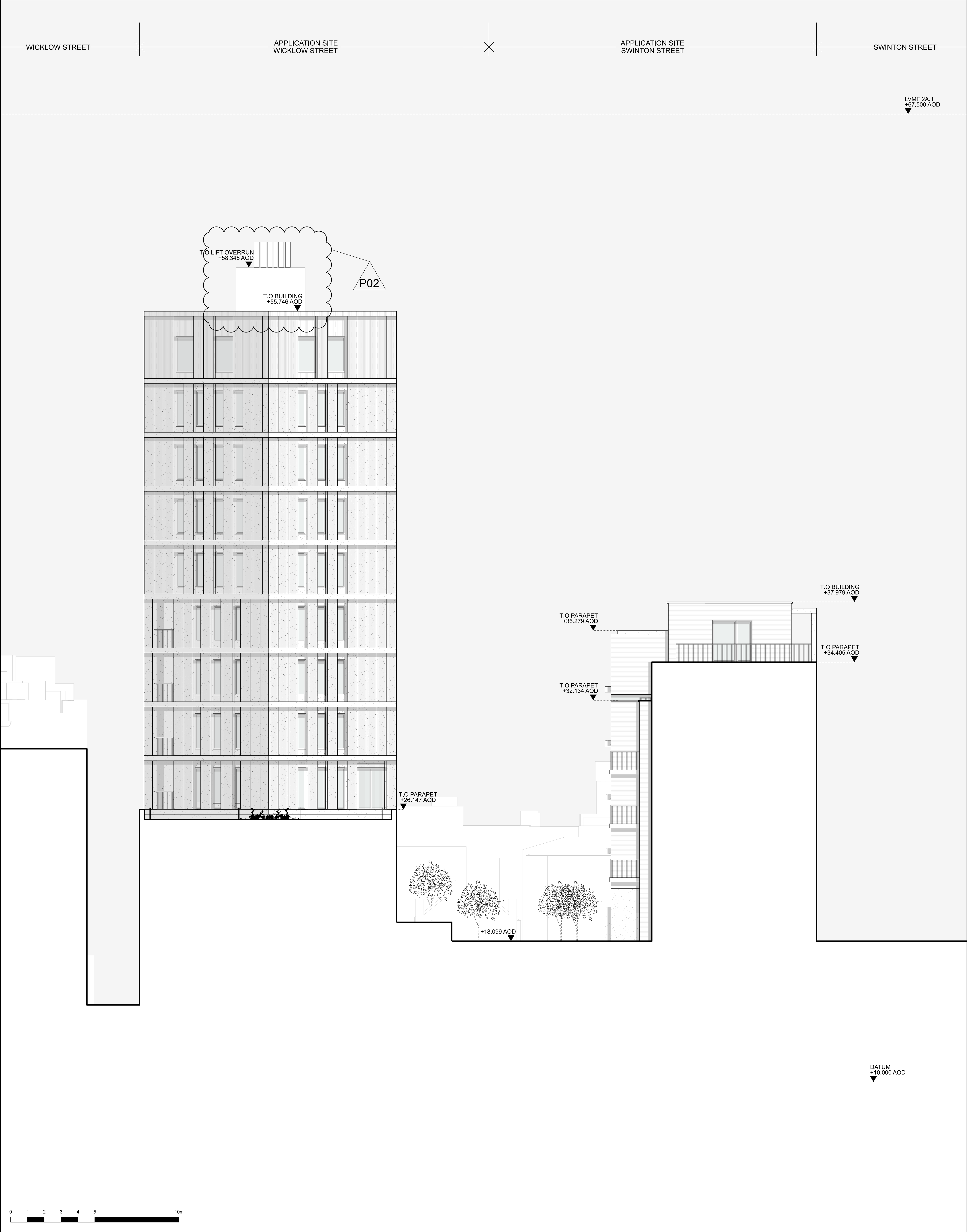
KEY	P01 30/11/20 ISSUED FOR PLANNING
	P02 28/02/23 ISSUED FOR PLANNING - S73 AMENDMENT

NOTE	When this drawing is issued in uncontrolled CAD format it will be accompanied by a PDF version and is issued to enable the recipient to prepare their own documents / models / drawings for which they are solely responsible.
	The recipient should report all drawing errors, omissions and discrepancies to the architect. All dimensions should be checked on site by the contractor and such dimensions shall be the contractor's responsibility.

LOCATION	Alford Hall Monaghan Morris Limited accepts no responsibility or liability for:- - any use of this drawing by parties other than the party for whom it was prepared or for purposes other than those for which it was prepared - any alterations or additions to or discrepancies arising out of changes to the background information on which the drawings are based that was current at the time of issue, and which occur to that information after it has been issued by AHMM - any loss or degradation of the information held in this drawing resulting from the translation from the original file format to any other file format or from the recipient's reading of it in any other programme or any version of the programme other than that which was used to prepare it - the accuracy of survey information provided by others or for any costs, claims, proceedings and expenses arising out of reliance on such information - any scaling from this drawing other than by the local planning authority solely for the purposes of the planning application to which it relates

LOCATION	ARCHITECTS Ltd MORELANDS, 5-23 OLD STREET LONDON EC1V 9HL TEL 020 7251 5261 FAX 020 7251 5123 WEB WWW.AHMM.CO.UK
	job title 330 GRAYS INN ROAD

drawing title / location PROPOSED RESIDENTIAL ELEVATIONS RESIDENTIAL BUILDINGS - EAST FACING					
drawn by OU	checked MH	scale 1:100@A1; 1:200@A3	status PLANNING		
project 18116	zone 03	source A	classification (00)_204	drawing no. P02	revision



RESIDENTIAL BUILDINGS : WEST FACING ELEVATION					
KEY	REV	DATE	NOTE	LOCATION	ALLFORD HALL MONAGHAN MORRIS
	P01	30/11/20	ISSUED FOR PLANNING		ARCHITECTS Ltd MORELANDS, 5-23 OLD STREET LONDON EC1V 9HL TEL 020 7251 5261 FAX 020 7251 5123 WEB WWW.AHMM.CO.UK
			When this drawing is issued in uncontrolled CAD format it will be accompanied by a PDF version and is issued to enable the recipient to prepare their own documents / models / drawings for which they are solely responsible. The recipient should report all drawing errors, omissions and discrepancies to the architect. All dimensions should be checked on site by the contractor and such dimensions shall be the contractor's responsibility.		job title 330 GRAYS INN ROAD
			Allford Hall Monaghan Morris Limited accepts no responsibility or liability for:- - any use of this drawing by parties other than the party for whom it was prepared or for purposes other than those for which it was prepared - any alterations or additions to or discrepancies arising out of changes to the background information on which the drawings are based that was current at the time of issue, and which occur to that information after it has been issued by AHMM - any loss or degradation of the information held in this drawing resulting from the translation from the original file format to any other file format or from the recipient's reading of it in any other programme or any version of the programme other than that which was used to prepare it - the accuracy of survey information provided by others or for any costs, claims, proceedings and expenses arising out of reliance on such information - any scaling from this drawing other than by the local planning authority solely for the purposes of the planning application to which it relates		drawing title / location PROPOSED RESIDENTIAL ELEVATIONS RESIDENTIAL BUILDINGS - WEST FACING
					drawn by OU
					checked MH
					scale 1:100@A1; 1:200@A3
					status PLANNING
					project 18116
					zone 03
					source A
					classification (00)_205
					drawing no. / revision P01