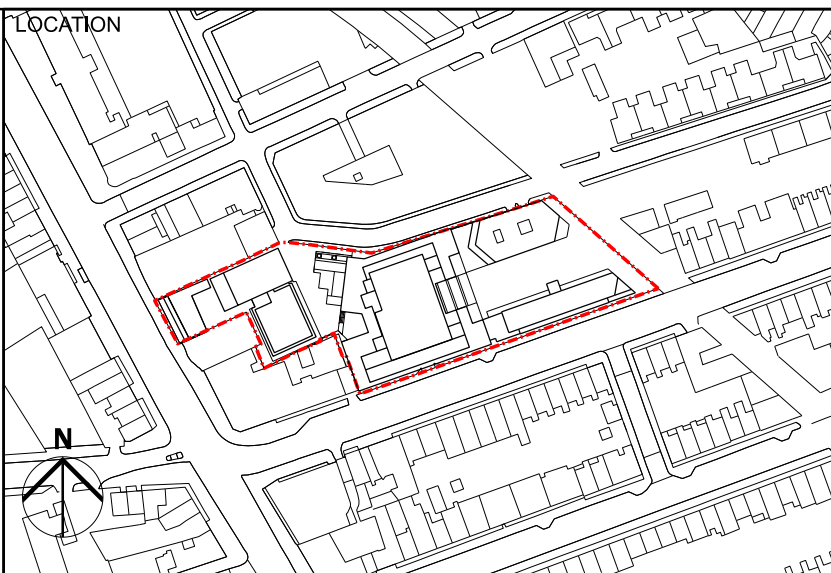


<p>KEY</p> <p>P01 30/11/20 ISSUED FOR PLANNING</p> <p>P02 12/03/21 ISSUED FOR PLANNING</p> <p>P03 28/02/23 ISSUED FOR PLANNING - S73 AMENDMENT</p>	<p>NOTE</p> <p>When this drawing is issued in uncontrolled CAD format it will be accompanied by a PDF version and is issued to enable the recipient to prepare their own documents / models / drawings for which they are solely responsible.</p> <p>The recipient should report all drawing errors, omissions and discrepancies to the architect. All dimensions should be checked on site by the contractor and such dimensions shall be the contractor's responsibility.</p> <p>Allford Hall Monaghan Morris Limited accepts no responsibility or liability for:-</p> <ul style="list-style-type: none">- any use of this drawing by parties other than the party for whom it was prepared or for purposes other than those for which it was prepared- any alterations or additions to or discrepancies arising out of changes to the background information on which the drawings are based that was current at the time of issue, and which occur to that information after it has been issued by AHMM- any loss or degradation of the information held in this drawing resulting from the translation from the original file format to any other file format or from the recipients reading of it in any other programme or any version of the programme other than that which was used to prepare it- the accuracy of survey information provided by others or for any costs, claims, proceedings and expenses arising out of reliance on such information- any scaling from this drawing other than by the local planning authority solely for the purposes of the planning application to which it relates	<p>LOCATION</p> 	<p>ALLFORD HALL MONAGHAN MORRIS</p> <p>ARCHITECTS Ltd MORELANDS, 5-23 OLD STREET LONDON EC1V 9HL TEL 020 7251 5261 FAX 020 7251 5123 WEB WWW.AHMM.CO.UK</p> <p>job title 330 GRAYS INN ROAD</p> <p>drawing title / location PROPOSED OFFICE ELEVATION SOUTH ELEVATION (SWINTON STREET)</p> <table><tr><td>drawn by GS</td><td>checked MH</td><td>scale 1:100@A1; 1:200@A3</td><td>status PLANNING</td></tr><tr><td>project 18116</td><td>zone 02</td><td>source A</td><td>classification (00)_P200</td></tr><tr><td colspan="2">drawing no. P02</td><td colspan="2">revision</td></tr></table>	drawn by GS	checked MH	scale 1:100@A1; 1:200@A3	status PLANNING	project 18116	zone 02	source A	classification (00)_P200	drawing no. P02		revision	
drawn by GS	checked MH	scale 1:100@A1; 1:200@A3	status PLANNING												
project 18116	zone 02	source A	classification (00)_P200												
drawing no. P02		revision													



KEY	P01	30/11/20	ISSUED FOR PLANNING
	P02	12/03/21	ISSUED FOR PLANNING
	P03	28/02/23	ISSUED FOR PLANNING - S73 AMENDMENT

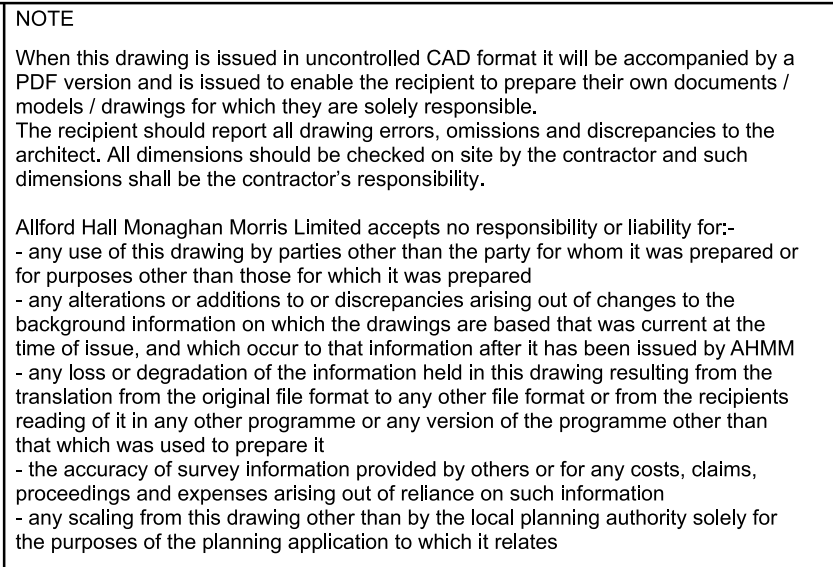
NOTE

When this drawing is issued in uncontrolled CAD format it will be accompanied by a PDF version and is issued to enable the recipient to prepare their own documents / models / drawings for which they are solely responsible.

The recipient should report all drawing errors, omissions and discrepancies to the architect. All dimensions should be checked on site by the contractor and such dimensions shall be the contractor's responsibility.

Alford Hall Monaghan Morris Limited accepts no responsibility or liability for:-

- any use of this drawing by parties other than the party for whom it was prepared or for purposes other than those for which it was prepared
- any alterations or additions to or discrepancies arising out of changes to the background information on which the drawings are based that was current at the time of issue, and which occur to that information after it has been issued by AHMM
- any loss or degradation of the information held in this drawing resulting from the translation from the original file format to any other file format or from the recipients reading of it in any other programme or any version of the programme other than that which was used to prepare it
- the accuracy of survey information provided by others or for any costs, claims, proceedings and expenses arising out of reliance on such information
- any scaling from this drawing other than by the local planning authority solely for the purposes of the planning application to which it relates



drawing title / location		status	
PROPOSED OFFICE ELEVATION		PLANNING	
NORTH ELEVATION (WICKLOW STREET)			
drawn by	checked	scale	
GS	MH	1:100@A1; 1:200@A3	
project	zone	source	classification
18116	02	A	(00)_P201 P03

ALLFORD HALL MONAGHAN MORRIS	
ARCHITECTS LTD MORELANDS, 5-23 OLD STREET LONDON EC1V 9HL TEL 020 7251 5261 FAX 020 7251 5123 WEB WWW.AHMM.CO.UK	
job title	
330 GRAYS INN ROAD	
drawing title / location	
PROPOSED OFFICE ELEVATION	
NORTH ELEVATION (WICKLOW STREET)	
drawn by	checked
GS	MH
scale	1:100@A1; 1:200@A3
status	PLANNING
project	zone
18116	02
source	classification
A	(00)_P201 P03

LVMF 2A.1
+67.500 AOD

APPLICATION SITE
330 GRAY'S INN RD

01

01

+52.900 AOD

+52.200 AOD

T.O PARAPET
+43.800 AOD

P03

P03

+15.100 AOD

DATUM +10.00m

0 1 2 3 4 5 10m

KEY

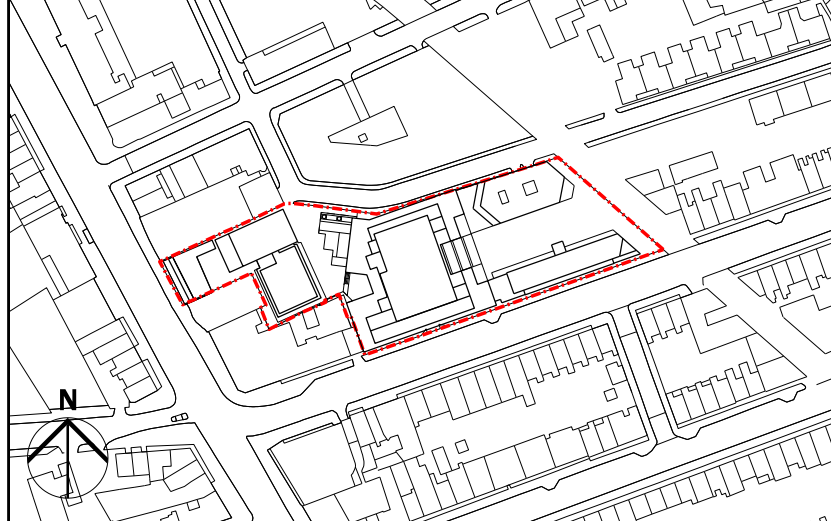
P01 30/11/20 ISSUED FOR PLANNING
P02 12/03/21 ISSUED FOR PLANNING
P03 28/02/23 ISSUED FOR PLANNING - S73 AMENDMENT

NOTE

When this drawing is issued in uncontrolled CAD format it will be accompanied by a PDF version and is issued to enable the recipient to prepare their own documents / models / drawings for which they are solely responsible. The recipient should report all drawing errors, omissions and discrepancies to the architect. All dimensions should be checked on site by the contractor and such dimensions shall be the contractor's responsibility.

Allford Hall Monaghan Morris Limited accepts no responsibility or liability for:-
- any use of this drawing by parties other than the party for whom it was prepared or for purposes other than those for which it was prepared
- any alterations or additions to or discrepancies arising out of changes to the background information on which the drawings are based that was current at the time of issue, and which occur to that information after it has been issued by AHMM
- any loss or degradation of the information held in this drawing resulting from the translation from the original file format to any other file format or from the recipient's reading of it in any other programme or any version of the programme other than that which was used to prepare it
- the accuracy of survey information provided by others or for any costs, claims, proceedings and expenses arising out of reliance on such information
- any scaling from this drawing other than by the local planning authority solely for the purposes of the planning application to which it relates

LOCATION



ALLFORD HALL MONAGHAN MORRIS
ARCHITECTS Ltd
MORELANDS, 5-23 OLD STREET LONDON EC1V 9HL
TEL 020 7251 5261 FAX 020 7251 5123 WEB WWW.AHMM.CO.UK

job title
330 GRAYS INN ROAD

drawing title / location
**PROPOSED OFFICE ELEVATION
WEST ELEVATION (WICKLOW COURTYARD)**

drawn by	checked	scale	status
GS	MH	1:100@A1; 1:200@A3	PLANNING

project	zone	source	classification	drawing no.	revision
18116	02	A	(00)_P202	P03	

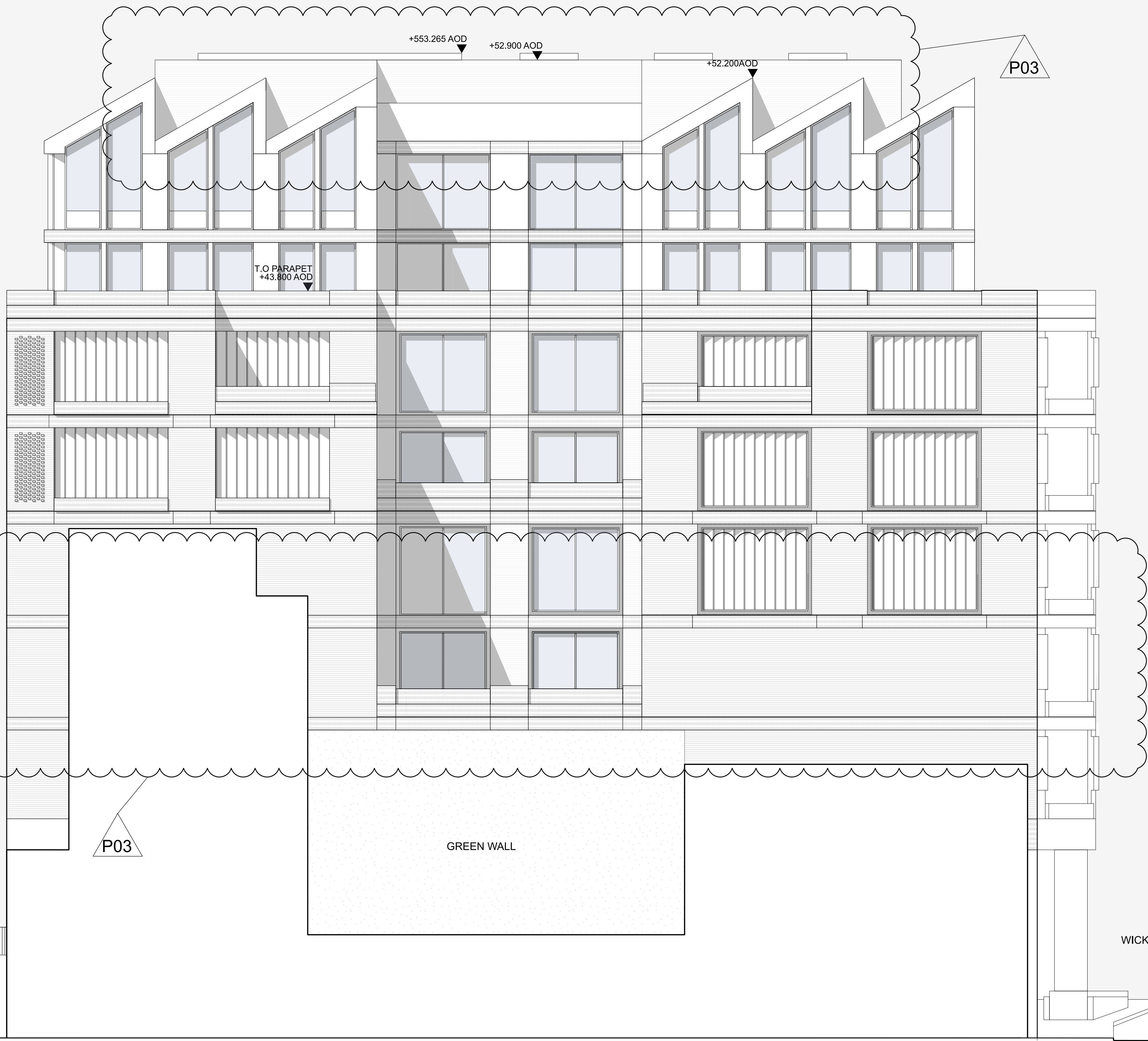
© Allford Hall Monaghan Morris Limited

LVMF 2A.1
+67.500 AOD

APPLICATION SITE
330 GRAY'S INN RD

02/200
01

02/201
01



SWINTON STREET

P03

GREEN WALL

WICKLOW STREET

DATUM +10.00m

0 1 2 3 4 5 10m

KEY

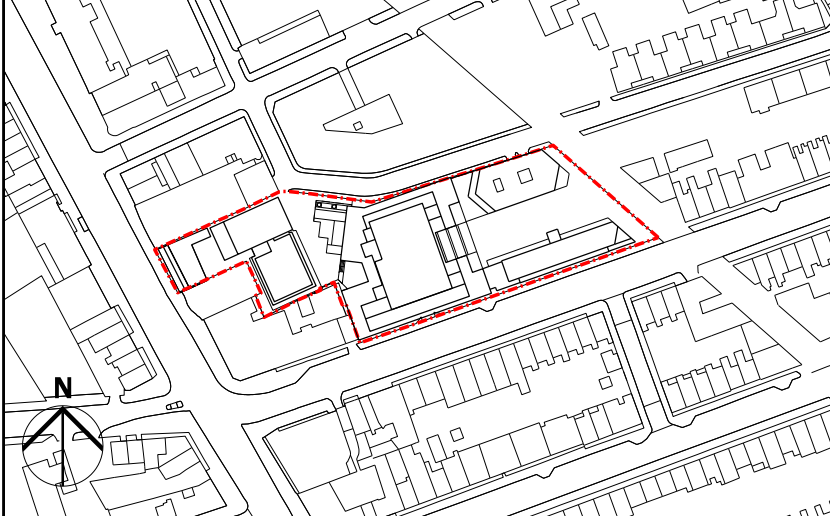
P01 30/11/20 ISSUED FOR PLANNING
P02 12/03/21 ISSUED FOR PLANNING
P03 28/02/23 ISSUED FOR PLANNING - S73 AMENDMENT

NOTE

When this drawing is issued in uncontrolled CAD format it will be accompanied by a PDF version and is issued to enable the recipient to prepare their own documents / models / drawings for which they are solely responsible.
The recipient should report all drawing errors, omissions and discrepancies to the architect. All dimensions should be checked on site by the contractor and such dimensions shall be the contractor's responsibility.

Allford Hall Monaghan Morris Limited accepts no responsibility or liability for:-
- any use of this drawing by parties other than the party for whom it was prepared or for purposes other than those for which it was prepared
- any alterations or additions to or discrepancies arising out of changes to the background information on which the drawings are based that was current at the time of issue, and which occur to that information after it has been issued by AHMM
- any loss or degradation of the information held in this drawing resulting from the translation from the original file format to any other file format or from the recipients reading of it in any other programme or any version of the programme other than that which was used to prepare it
- the accuracy of survey information provided by others or for any costs, claims, proceedings and expenses arising out of reliance on such information
- any scaling from this drawing other than by the local planning authority solely for the purposes of the planning application to which it relates

LOCATION



ALLFORD HALL MONAGHAN MORRIS
ARCHITECTS Ltd
MORELANDS, 5-23 OLD STREET LONDON EC1V 9HL
TEL 020 7251 5261 FAX 020 7251 5123 WEB WWW.AHMM.CO.UK

job title 330 GRAYS INN ROAD					
drawing title / location PROPOSED OFFICE ELEVATION EAST ELEVATION (RESIDENTIAL GARDEN)					
drawn by GS	checked MH	scale 1:100@A1; 1:200@A3	status PLANNING		
project 18116	zone 02	source A	classification (00)_P203	drawing no. P03	revision

© Allford Hall Monaghan Morris Limited

LVMF 2A.1
+67.500 AOD

APPLICATION SITE
330 GRAY'S INN RD



KEY

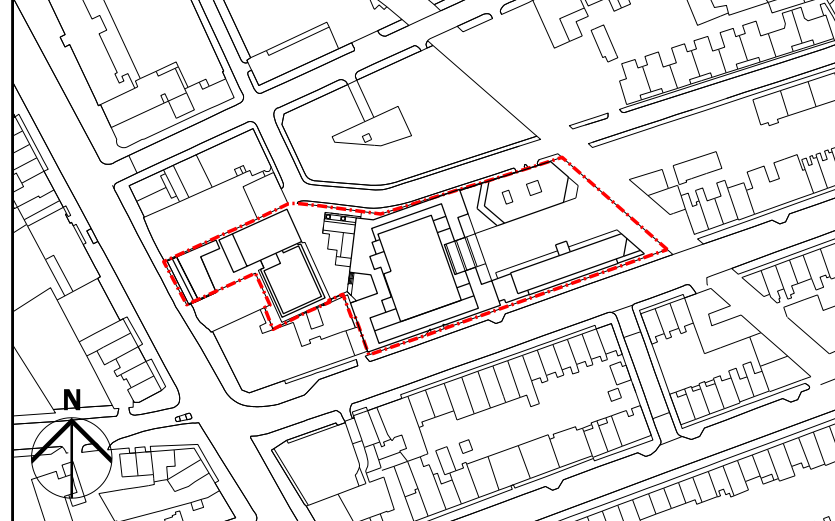
P01 30/11/20 ISSUED FOR PLANNING
P02 12/03/21 ISSUED FOR PLANNING
P03 19/01/23 ISSUED FOR PLANNING - S73 AMENDMENT

NOTE

When this drawing is issued in uncontrolled CAD format it will be accompanied by a PDF version and is issued to enable the recipient to prepare their own documents / models / drawings for which they are solely responsible. The recipient should report all drawing errors, omissions and discrepancies to the architect. All dimensions should be checked on site by the contractor and such dimensions shall be the contractor's responsibility.

Allford Hall Monaghan Morris Limited accepts no responsibility or liability for:-
- any use of this drawing by parties other than the party for whom it was prepared or for purposes other than those for which it was prepared
- any alterations or additions to or discrepancies arising out of changes to the background information on which the drawings are based that was current at the time of issue, and which occur to that information after it has been issued by AHMM
- any loss or degradation of the information held in this drawing resulting from the translation from the original file format to any other file format or from the recipients reading of it in any other programme or any version of the programme other than that which was used to prepare it
- the accuracy of survey information provided by others or for any costs, claims, proceedings and expenses arising out of reliance on such information
- any scaling from this drawing other than by the local planning authority solely for the purposes of the planning application to which it relates

LOCATION



ALLFORD HALL MONAGHAN MORRIS
ARCHITECTS LTD
MORELANDS, 5-23 OLD STREET LONDON EC1V 9HL
TEL 020 7251 5261 FAX 020 7251 5123 WEB WWW.AHMM.CO.UK

job title
330 GRAYS INN ROAD

drawing title / location
**PROPOSED OFFICE SECTION
LOOKING EAST**

drawn by GS	checked MH	scale 1:100@A1; 1:200@A3	status PLANNING
----------------	---------------	-----------------------------	--------------------

project 18116	zone 02	source A	classification (00)_P300	drawing no. P03	revision
------------------	------------	-------------	-----------------------------	--------------------	----------

© Allford Hall Monaghan Morris Limited