

01 GENERAL ARRANGEMENT: ELEVENTH FLOOR PLAN

KEY
--- SITE BOUNDARY

REV	DATE	DESCRIPTION
P01	30/11/20	ISSUED FOR PLANNING
P02	12/03/21	ISSUED FOR PLANNING
P03	28/02/23	ISSUED FOR PLANNING - S73 AMENDMENT

CONSULTANTS	NAME
CLIENT:	GROVEWORLD
STRUCTURAL ENGINEER:	WSP
MECHANICAL ENGINEER:	XC02
COST CONSULTANT:	TURNER TOWNSEND
ACOUSTIC CONSULTANT:	HANN TUCKER
TRANSPORT CONSULTANT:	STEER
DAYLIGHT / SUNLIGHT:	POINT2

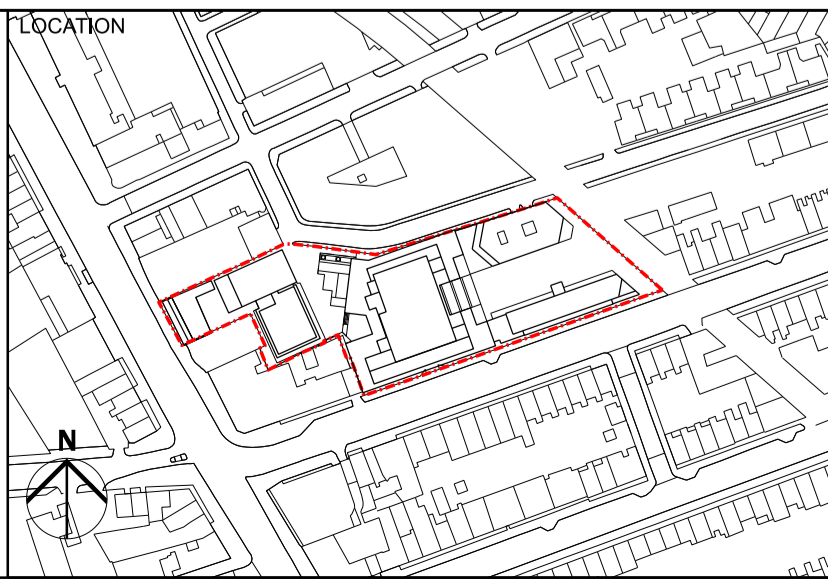
NOTE

When this drawing is issued in uncontrolled CAD format it will be accompanied by a PDF version and is issued to enable the recipient to prepare their own documents / models / drawings for which they are solely responsible.

The recipient should report all drawing errors, omissions and discrepancies to the architect. All dimensions should be checked on site by the contractor and such dimensions shall be the contractor's responsibility.

Allford Hall Monaghan Morris Limited accepts no responsibility or liability for:-

- any use of this drawing by parties other than the party for whom it was prepared or for purposes other than those for which it was prepared
- any alterations or additions to or discrepancies arising out of changes to the background information on which the drawings are based that was current at the time of issue, and which occur to that information after it has been issued by AHMM
- any loss or degradation of the information held in this drawing resulting from the translation from the original file format to any other file format or from the recipient's reading of it in any other programme or any version of the programme other than that which was used to prepare it
- the accuracy of survey information provided by others or for any costs, claims, proceedings and expenses arising out of reliance on such information
- any scaling from this drawing other than by the local planning authority solely for the purposes of the planning application to which it relates



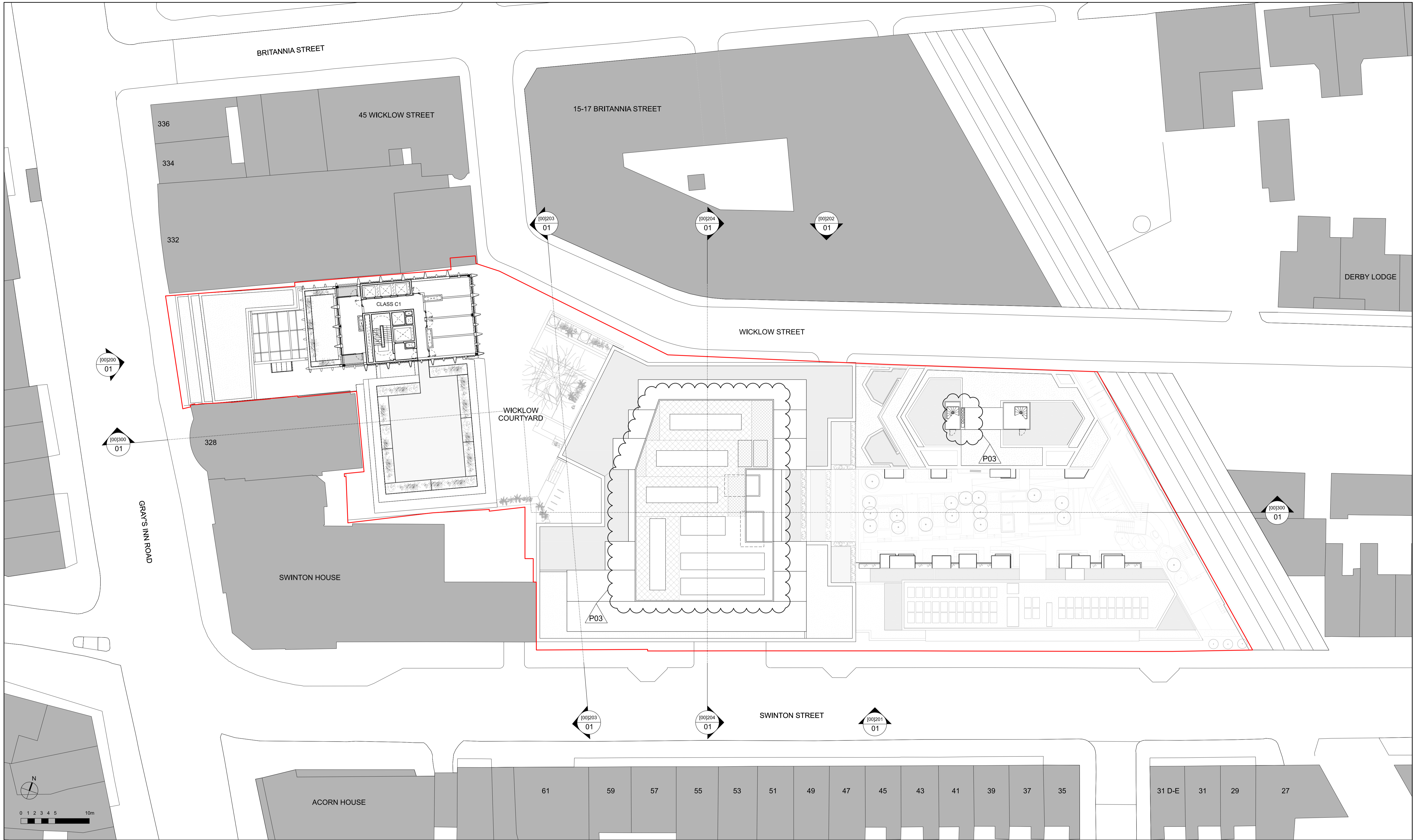
ALLFORD HALL MONAGHAN MORRIS
 ARCHITECTS LTD
 MORELANDS, 5-23 OLD STREET LONDON EC1V 9HL
 TEL 020 7251 5261 FAX 020 7251 5123 WEB WWW.AHMM.CO.UK

job title
330 GRAYS INN ROAD

drawing title / location
**PROPOSED MASTERPLAN
 ELEVENTH FLOOR PLAN**

drawn by GS	checked by MH	scale 1:250@A1; 1:500@A3	status PLANNING
project 18116	zone A	source classification (00)_P111	drawing no. revision P03

© Allford Hall Monaghan Morris Limited



01 GENERAL ARRANGEMENT: TWELFTH FLOOR PLAN

KEY
--- SITE BOUNDARY

REV	DATE	DESCRIPTION
P01	30/11/20	ISSUED FOR PLANNING
P02	12/03/21	ISSUED FOR PLANNING
P03	28/02/23	ISSUED FOR PLANNING - S73 AMENDMENT

CONSULTANTS	NAME
CLIENT:	GROVEWORLD
STRUCTURAL ENGINEER:	WSP
MECHANICAL ENGINEER:	XC02
COST CONSULTANT:	TURNER TOWNSEND
ACOUSTIC CONSULTANT:	HANN TUCKER
TRANSPORT CONSULTANT:	STEER
DAYLIGHT / SUNLIGHT:	POINT2

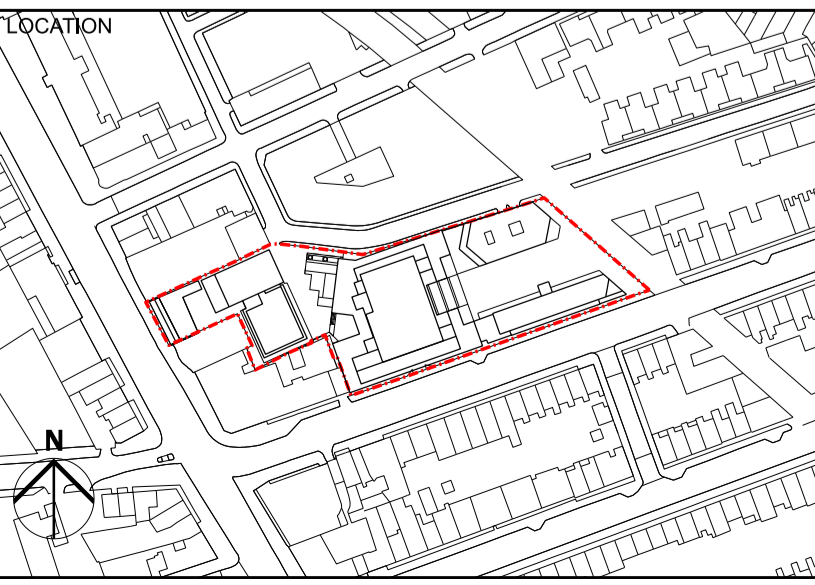
NOTE

When this drawing is issued in uncontrolled CAD format it will be accompanied by a PDF version and is issued to enable the recipient to prepare their own documents / models / drawings for which they are solely responsible.

The recipient should report all drawing errors, omissions and discrepancies to the architect. All dimensions should be checked on site by the contractor and such dimensions shall be the contractor's responsibility.

Allford Hall Monaghan Morris Limited accepts no responsibility or liability for:-

- any use of this drawing by parties other than the party for whom it was prepared or for purposes other than those for which it was prepared
- any alterations or additions to or discrepancies arising out of changes to the background information on which the drawings are based that was current at the time of issue, and which occur to that information after it has been issued by AHMM
- any loss or degradation of the information held in this drawing resulting from the translation from the original file format to any other file format or from the recipient's reading of it in any other programme or any version of the programme other than that which was used to prepare it
- the accuracy of survey information provided by others or for any costs, claims, proceedings and expenses arising out of reliance on such information
- any scaling from this drawing other than by the local planning authority solely for the purposes of the planning application to which it relates



ALLFORD HALL MONAGHAN MORRIS

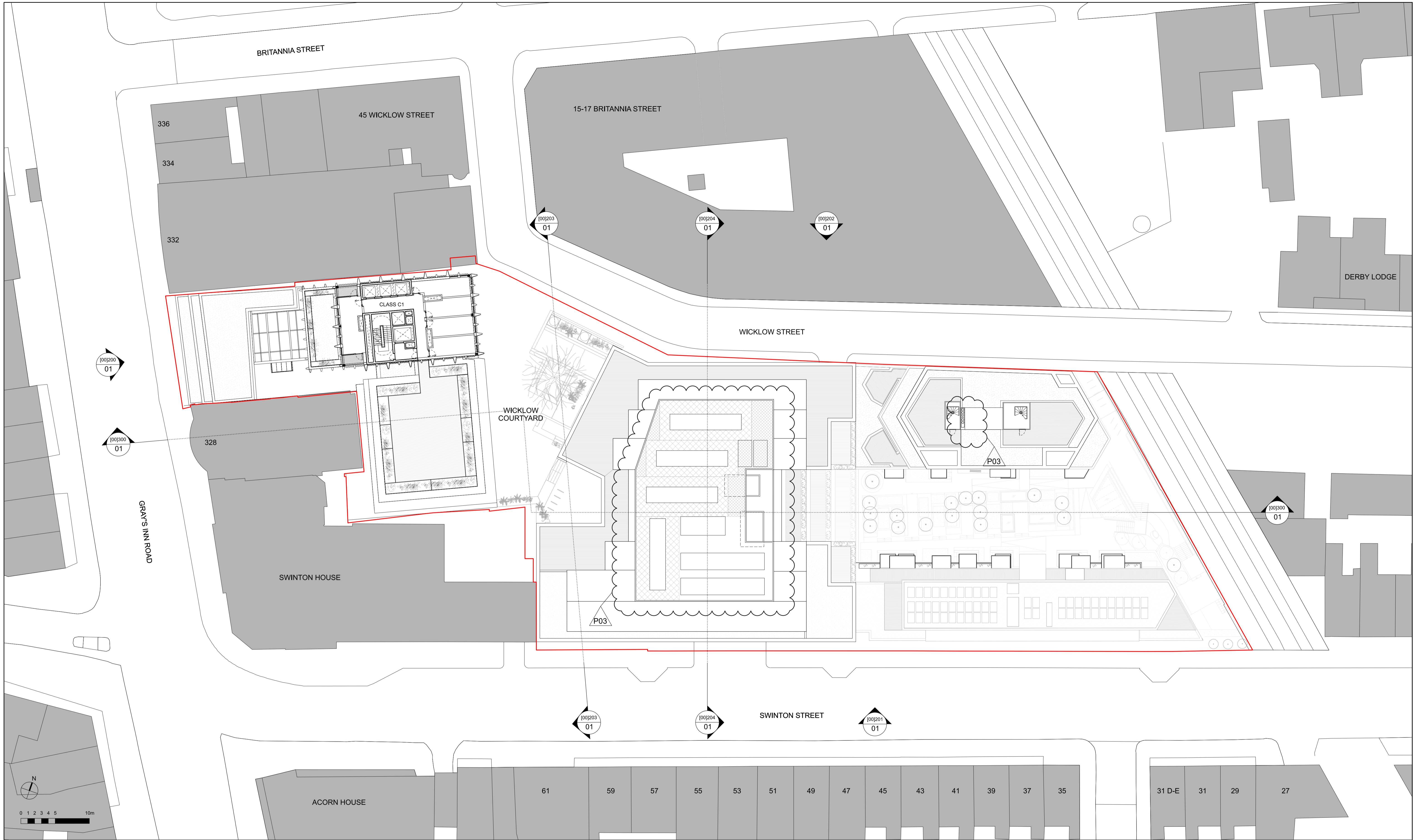
ARCHITECTS Ltd
 MORELANDS, 5-23 OLD STREET LONDON EC1V 9HL
 TEL 020 7251 5261 FAX 020 7251 5123 WEB WWW.AHMM.CO.UK

job title
330 GRAYS INN ROAD

drawing title / location
**PROPOSED MASTERPLAN
 TWELFTH FLOOR PLAN**

drawn by GS	checked MH	scale 1:250@A1; 1:500@A3	status PLANNING
project 18116	zone A	source (00)_P112	drawing no. / revision P03

© Allford Hall Monaghan Morris Limited



01 GENERAL ARRANGEMENT: THIRTEENTH FLOOR PLAN

KEY
--- SITE BOUNDARY

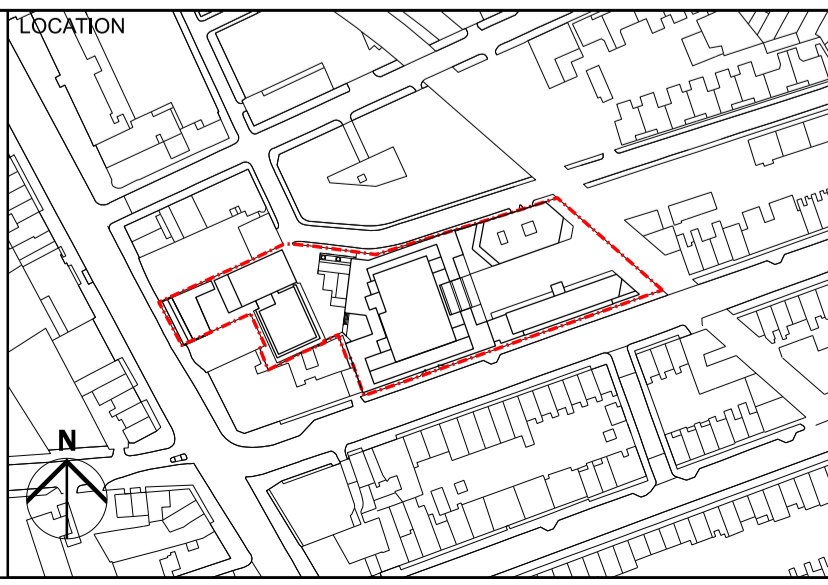
REV	DATE	NOTE
P01	30/11/20	ISSUED FOR PLANNING
P02	12/03/21	ISSUED FOR PLANNING
P03	28/02/23	ISSUED FOR PLANNING - S73 AMENDMENT

CONSULTANTS	NAME
CLIENT:	GROVEWORLD
STRUCTURAL ENGINEER:	WSP
MECHANICAL ENGINEER:	XC02
COST CONSULTANT:	TURNER TOWNSEND
ACOUSTIC CONSULTANT:	HANN TUCKER
TRANSPORT CONSULTANT:	STEER
DAYLIGHT / SUNLIGHT:	POINT2

NOTE

When this drawing is issued in uncontrolled CAD format it will be accompanied by a PDF version and is issued to enable the recipient to prepare their own documents / models / drawings for which they are solely responsible. The recipient should report all drawing errors, omissions and discrepancies to the architect. All dimensions should be checked on site by the contractor and such dimensions shall be the contractor's responsibility.

Allford Hall Monaghan Morris Limited accepts no responsibility or liability for:-
 - any use of this drawing by parties other than the party for whom it was prepared or for purposes other than those for which it was prepared
 - any alterations or additions to or discrepancies arising out of changes to the background information on which the drawings are based that was current at the time of issue, and which occur to that information after it has been issued by AHMM
 - any loss or degradation of the information held in this drawing resulting from the translation from the original file format to any other file format or from the recipient's reading of it in any other programme or any version of the programme other than that which was used to prepare it
 - the accuracy of survey information provided by others or for any costs, claims, proceedings and expenses arising out of reliance on such information
 - any scaling from this drawing other than by the local planning authority solely for the purposes of the planning application to which it relates



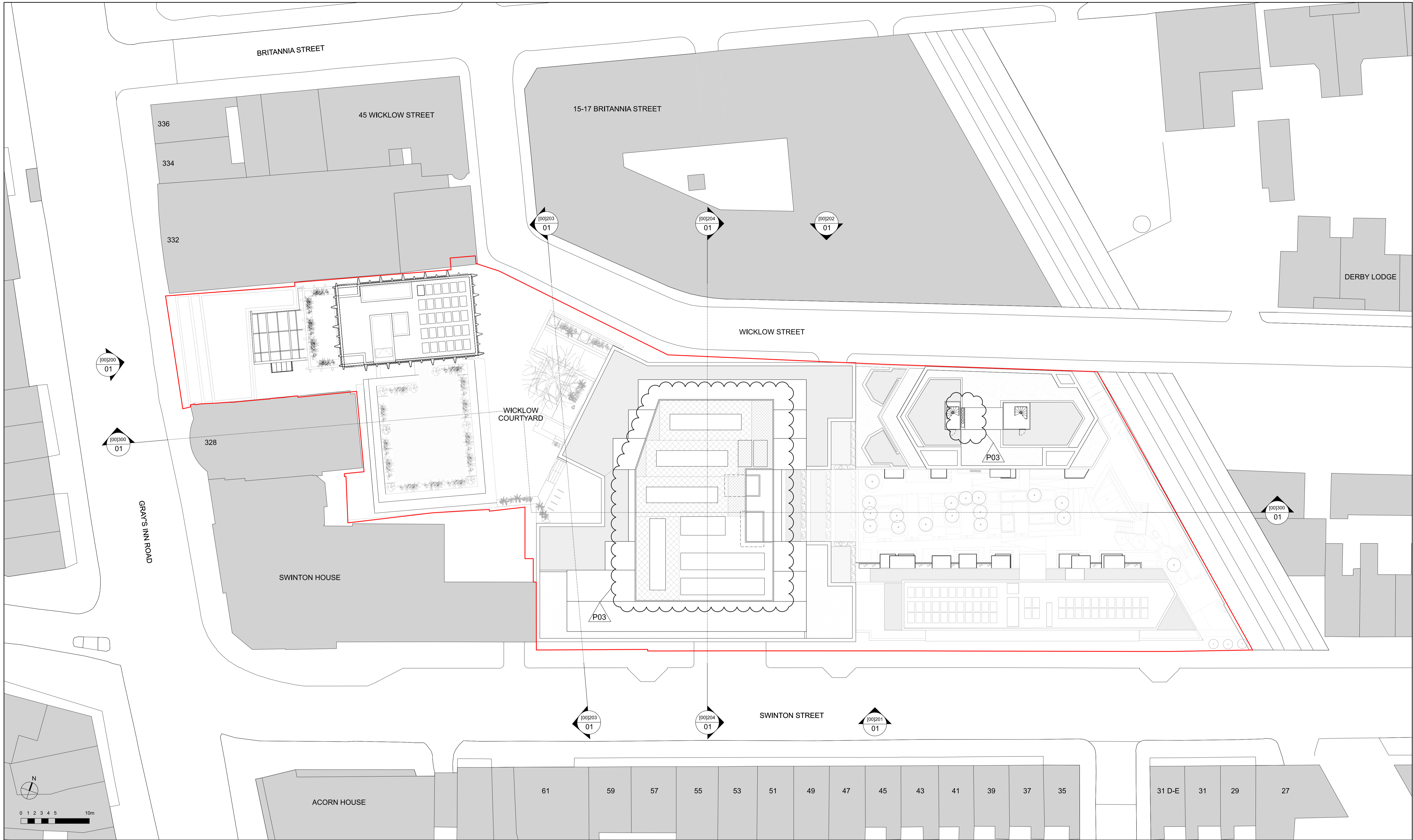
ALLFORD HALL MONAGHAN MORRIS
 ARCHITECTS Ltd
 MORELANDS, 5-23 OLD STREET LONDON EC1V 9HL
 TEL 020 7251 5261 FAX 020 7251 5123 WEB WWW.AHMM.CO.UK

job title
330 GRAYS INN ROAD

drawing title / location
**PROPOSED MASTERPLAN
 THIRTEENTH FLOOR PLAN**

drawn by GS	checked MH	scale 1:250@A1; 1:500@A3	status PLANNING
project 18116	zone A	source (00)_P113	drawing no. / revision P03

© Allford Hall Monaghan Morris Limited



01 GENERAL ARRANGEMENT: FOURTEENTH FLOOR PLAN

KEY
--- SITE BOUNDARY

REV	DATE	DESCRIPTION
P01	30/11/20	ISSUED FOR PLANNING
P02	12/03/21	ISSUED FOR PLANNING
P03	28/02/23	ISSUED FOR PLANNING - S73 AMENDMENT

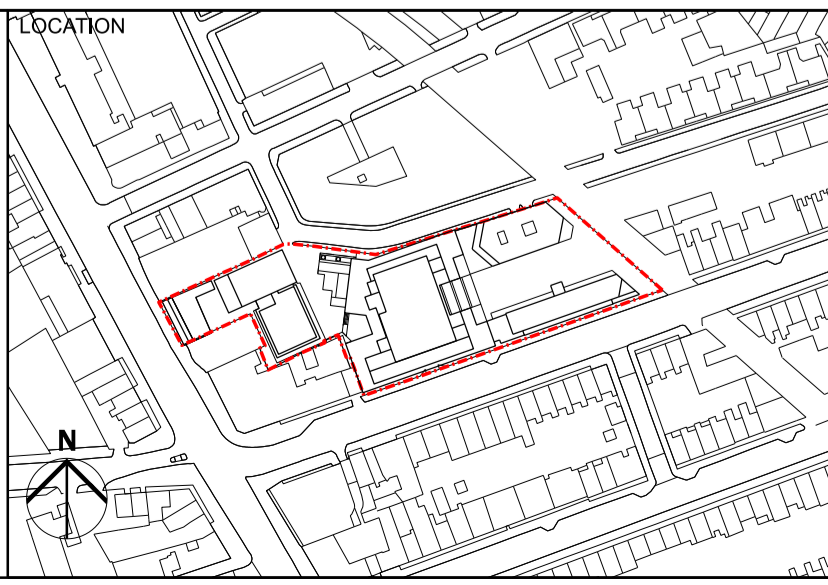
CONSULTANTS	NAME
CLIENT:	GROVEWORLD
STRUCTURAL ENGINEER:	WSP
MECHANICAL ENGINEER:	XC02
COST CONSULTANT:	TURNER TOWNSEND
ACOUSTIC CONSULTANT:	HANN TUCKER
TRANSPORT CONSULTANT:	STEER
DAYLIGHT / SUNLIGHT:	POINT2

NOTE

When this drawing is issued in uncontrolled CAD format it will be accompanied by a PDF version and is issued to enable the recipient to prepare their own documents / models / drawings for which they are solely responsible.

The recipient should report all drawing errors, omissions and discrepancies to the architect. All dimensions should be checked on site by the contractor and such dimensions shall be the contractor's responsibility.

Allford Hall Monaghan Morris Limited accepts no responsibility or liability for:-
 - any use of this drawing by parties other than the party for whom it was prepared or for purposes other than those for which it was prepared
 - any alterations or additions to or discrepancies arising out of changes to the background information on which the drawings are based that was current at the time of issue, and which occur to that information after it has been issued by AHMM
 - any loss or degradation of the information held in this drawing resulting from the translation from the original file format to any other file format or from the recipient's reading of it in any other programme or any version of the programme other than that which was used to prepare it
 - the accuracy of survey information provided by others or for any costs, claims, proceedings and expenses arising out of reliance on such information
 - any scaling from this drawing other than by the local planning authority solely for the purposes of the planning application to which it relates



ALLFORD HALL MONAGHAN MORRIS
 ARCHITECTS Ltd
 MORELANDS, 5-23 OLD STREET LONDON EC1V 9HL
 TEL 020 7251 5261 FAX 020 7251 5123 WEB WWW.AHMM.CO.UK

job title
330 GRAYS INN ROAD

drawing title / location
**PROPOSED MASTERPLAN
 FOURTEENTH FLOOR PLAN**

drawn by GS	checked MH	scale 1:250@A1; 1:500@A3	status PLANNING
project 18116	zone A (00)_P114	source classification P03	drawing no. / revision

© Allford Hall Monaghan Morris Limited