

01 GENERAL ARRANGEMENT: UPPER GROUND FLOOR (GRAY'S INN ROAD)

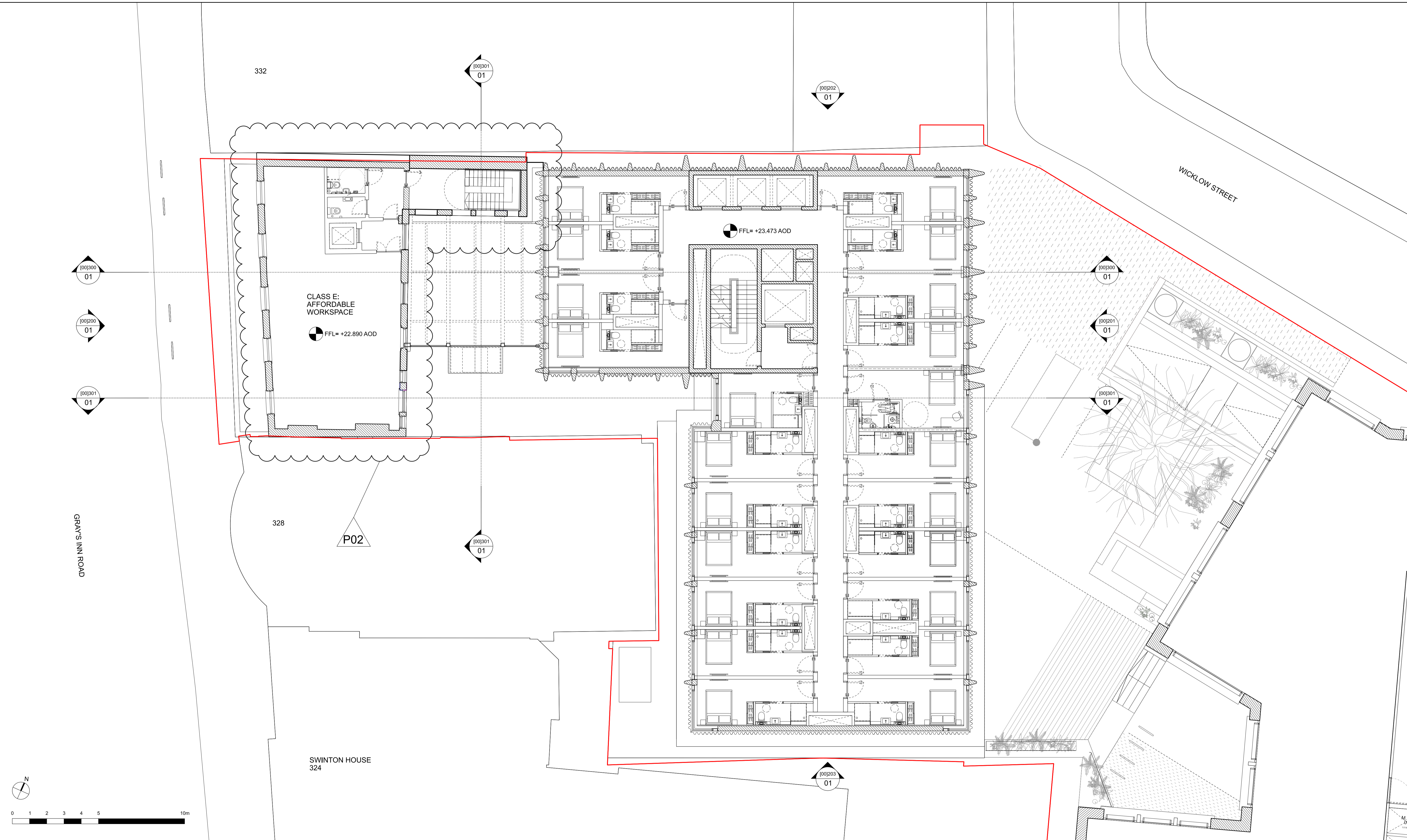
KEY	REV	DATE
---	P01	30/11/20
---	P02	28/02/23

CONSULTANTS	NAME
CLIENT:	GROVEWORLD
STRUCTURAL ENGINEER:	WSP
MECHANICAL ENGINEER:	XC02
COST CONSULTANT:	TURNER TOWNSEND
ACOUSTIC CONSULTANT:	HANN TUCKER
TRANSPORT CONSULTANT:	STEER
DAYLIGHT / SUNLIGHT:	POINT2

NOTE
When this drawing is issued in uncontrolled CAD format it will be accompanied by a PDF version and is issued to enable the recipient to prepare their own documents / models / drawings for which they are solely responsible. The recipient should report all drawing errors, omissions and discrepancies to the architect. All dimensions should be checked on site by the contractor and such dimensions shall be the contractor's responsibility.
Allford Hall Monaghan Morris Limited accepts no responsibility or liability for:- - any use of this drawing by parties other than the party for whom it was prepared or for purposes other than those for which it was prepared - any alterations or additions to or discrepancies arising out of changes to the background information on which the drawings are based that was current at the time of issue, and which occur to that information after it has been issued by AHMM - any loss or degradation of the information held in this drawing resulting from the translation from the original file format to any other file format or from the recipient's reading of it in any other programme or any version of the programme other than that which was used to prepare it - the accuracy of survey information provided by others or for any costs, claims, proceedings and expenses arising out of reliance on such information - any scaling from this drawing other than by the local planning authority solely for the purposes of the planning application to which it relates

LOCATION

ARCHITECTS
ALLFORD HALL MONAGHAN MORRIS
ARCHITECTS Ltd MORELANDS, 5-23 OLD STREET LONDON EC1V 9HL TEL 020 7251 5261 FAX 020 7251 5123 WEB WWW.AHMM.CO.UK
job title 330 GRAYS INN ROAD
drawing title / location PROPOSED HOTEL FLOOR PLANS UPPER GF PLAN (GRAY'S INN ROAD)
drawn by HM
checked by MH
scale 1:100@A1; 1:200@A3
status PLANNING
project 18116
zone 01
source classification A (00)_P100M
drawing no. / revision P02



01 GENERAL ARRANGEMENT: FIRST FLOOR PLAN

KEY	REV	DATE
---	P01	30/11/20 ISSUED FOR PLANNING
---	P02	28/02/23 ISSUED FOR PLANNING - S73 AMENDMENT

CONSULTANTS	NAME	NOTE
CLIENT:	GROVEWORLD	When this drawing is issued in uncontrolled CAD format it will be accompanied by a PDF version and is issued to enable the recipient to prepare their own documents / models / drawings for which they are solely responsible. The recipient should report all drawing errors, omissions and discrepancies to the architect. All dimensions should be checked on site by the contractor and such dimensions shall be the contractor's responsibility.
STRUCTURAL ENGINEER:	WSP	
MECHANICAL ENGINEER:	XC02	
COST CONSULTANT:	TURNER TOWNSEND	
ACOUSTIC CONSULTANT:	HANN TUCKER	
TRANSPORT CONSULTANT:	STEER	
DAYLIGHT / SUNLIGHT:	POINT2	Allford Hall Monaghan Morris Limited accepts no responsibility or liability for:- - any use of this drawing by parties other than the party for whom it was prepared or for purposes other than those for which it was prepared - any alterations or additions to or discrepancies arising out of changes to the background information on which the drawings are based that was current at the time of issue, and which occur to that information after it has been issued by AHMM - any loss or degradation of the information held in this drawing resulting from the translation from the original file format to any other file format or from the recipient's reading of it in any other programme or any version of the programme other than that which was used to prepare it - the accuracy of survey information provided by others or for any costs, claims, proceedings and expenses arising out of reliance on such information - any scaling from this drawing other than by the local planning authority solely for the purposes of the planning application to which it relates

LOCATION

ALLFORD HALL MONAGHAN MORRIS
 ARCHITECTS Ltd
 MORELANDS, 5-23 OLD STREET LONDON EC1V 9HL
 TEL 020 7251 5261 FAX 020 7251 5123 WEB WWW.AHMM.CO.UK

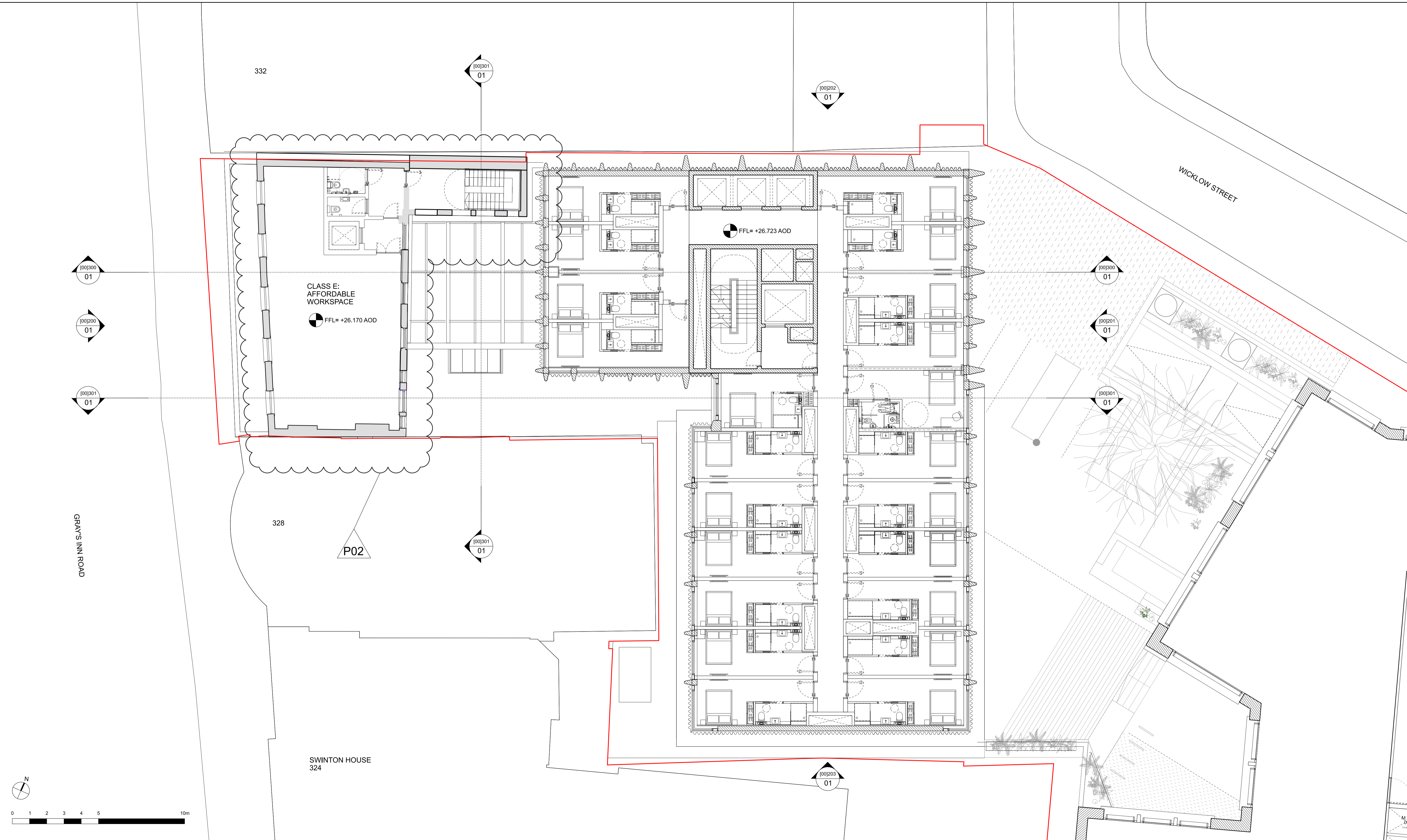
job title
330 GRAYS INN ROAD

drawing title / location
**PROPOSED HOTEL FLOOR PLANS
 FIRST FLOOR PLAN**

drawn by	checked	scale	status
HM	MH	1:100@A1; 1:200@A3	PLANNING

project	zone	source	classification	drawing no.	revision
18116	01	A	(00)_P101	P02	

© Allford Hall Monaghan Morris Limited



01 GENERAL ARRANGEMENT: SECOND FLOOR PLAN

KEY
--- SITE BOUNDARY

REV	DATE	NOTE
P01	30/11/20	ISSUED FOR PLANNING
P02	27/02/23	ISSUED FOR PLANNING - S73 AMENDMENT

CONSULTANTS	NAME	NOTE
CLIENT:	GROVEWORLD	When this drawing is issued in uncontrolled CAD format it will be accompanied by a PDF version and is issued to enable the recipient to prepare their own documents / models / drawings for which they are solely responsible. The recipient should report all drawing errors, omissions and discrepancies to the architect. All dimensions should be checked on site by the contractor and such dimensions shall be the contractor's responsibility.
STRUCTURAL ENGINEER:	WSP	
MECHANICAL ENGINEER:	XC02	
COST CONSULTANT:	TURNER TOWNSEND	
ACOUSTIC CONSULTANT:	HANN TUCKER	
TRANSPORT CONSULTANT:	STEER	
DAYLIGHT / SUNLIGHT:	POINT2	Allford Hall Monaghan Morris Limited accepts no responsibility or liability for:- - any use of this drawing by parties other than the party for whom it was prepared or for purposes other than those for which it was prepared - any alterations or additions to or discrepancies arising out of changes to the background information on which the drawings are based that was current at the time of issue, and which occur to that information after it has been issued by AHMM - any loss or degradation of the information held in this drawing resulting from the translation from the original file format to any other file format or from the recipient's reading of it in any other programme or any version of the programme other than that which was used to prepare it - the accuracy of survey information provided by others or for any costs, claims, proceedings and expenses arising out of reliance on such information - any scaling from this drawing other than by the local planning authority solely for the purposes of the planning application to which it relates

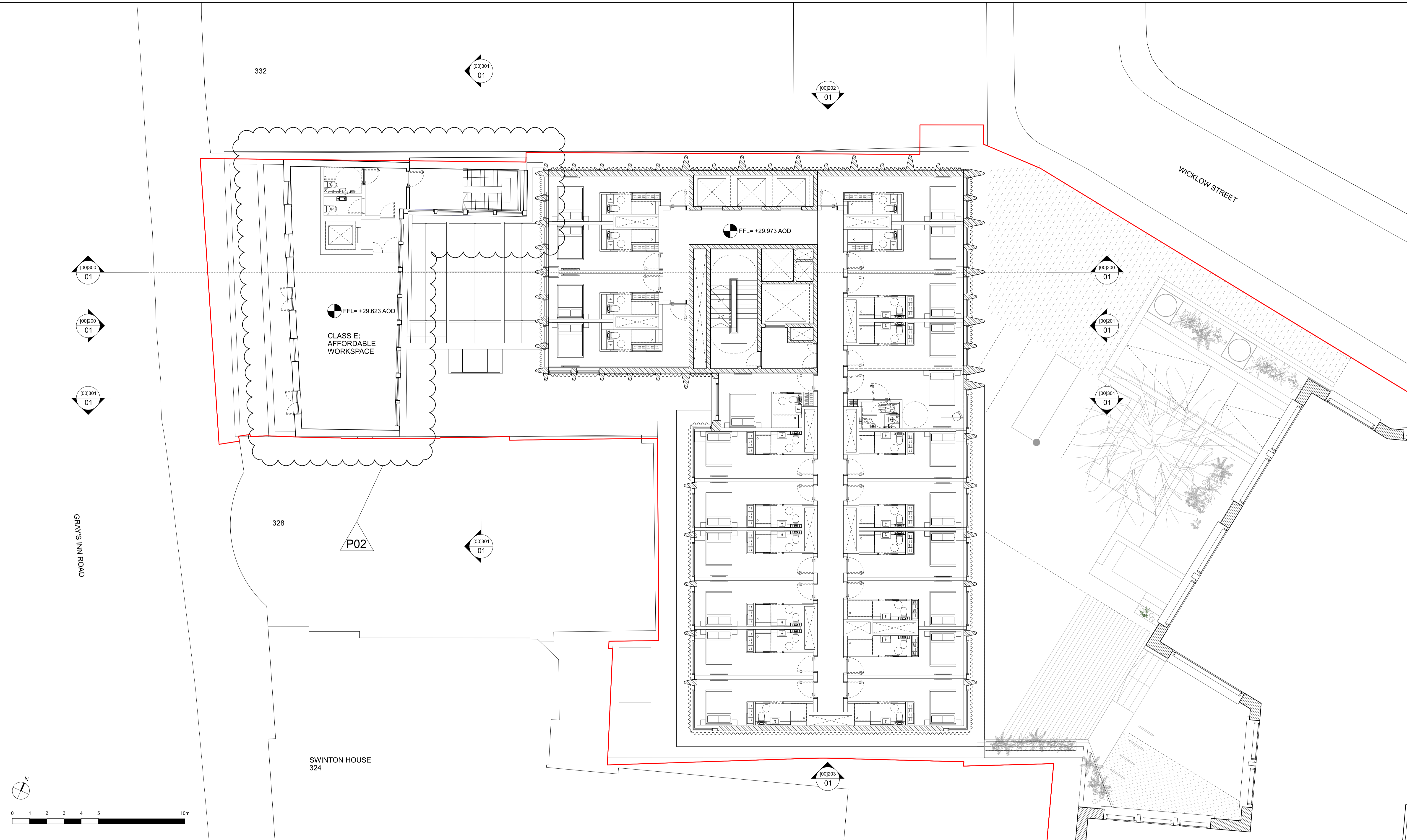
LOCATION

drawn by	checked	scale	status		
HM	MH	1:100@A1; 1:200@A3	PLANNING		
project	zone	source	classification	drawing no.	revision
18116	01	A	(00)_P102	P02	

ALLFORD HALL MONAGHAN MORRIS
 ARCHITECTS Ltd
 MORELANDS, 5-23 OLD STREET LONDON EC1V 9HL
 TEL 020 7251 5261 FAX 020 7251 5123 WEB WWW.AHMM.CO.UK

job title
330 GRAYS INN ROAD
 drawing title / location
PROPOSED HOTEL FLOOR PLANS
SECOND FLOOR PLAN

© Allford Hall Monaghan Morris Limited



01 GENERAL ARRANGEMENT: THIRD FLOOR PLAN

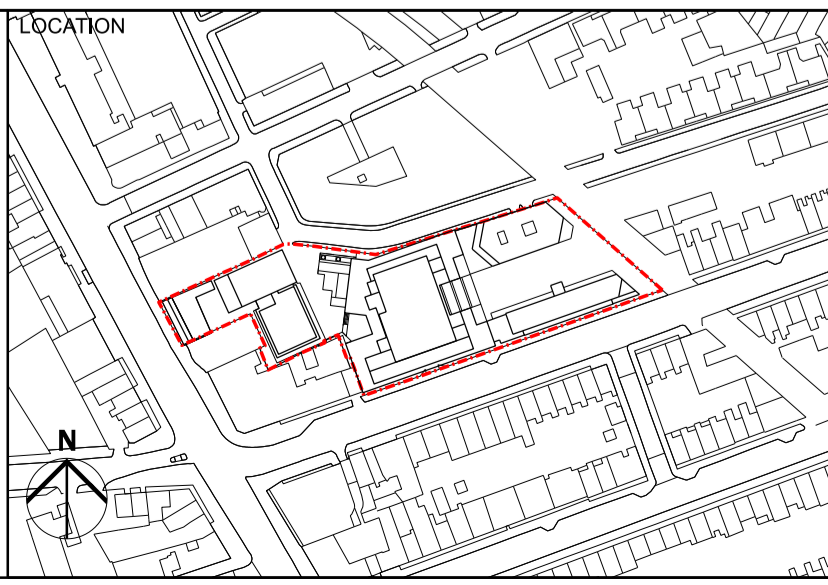
KEY
--- SITE BOUNDARY

REV	DATE	NOTE
P01	30/11/20	ISSUED FOR PLANNING
P02	28/02/23	ISSUED FOR PLANNING - S73 AMENDMENT

CONSULTANTS	NAME	NOTE
CLIENT:	GROVEWORLD	
STRUCTURAL ENGINEER:	WSP	
MECHANICAL ENGINEER:	XC02	
COST CONSULTANT:	TURNER TOWNSEND	
ACOUSTIC CONSULTANT:	HANN TUCKER	
TRANSPORT CONSULTANT:	STEER	
DAYLIGHT / SUNLIGHT:	POINT2	

When this drawing is issued in uncontrolled CAD format it will be accompanied by a PDF version and is issued to enable the recipient to prepare their own documents / models / drawings for which they are solely responsible.
 The recipient should report all drawing errors, omissions and discrepancies to the architect. All dimensions should be checked on site by the contractor and such dimensions shall be the contractor's responsibility.

Allford Hall Monaghan Morris Limited accepts no responsibility or liability for:-
 - any use of this drawing by parties other than the party for whom it was prepared or for purposes other than those for which it was prepared
 - any alterations or additions to or discrepancies arising out of changes to the background information on which the drawings are based that was current at the time of issue, and which occur to that information after it has been issued by AHMM
 - any loss or degradation of the information held in this drawing resulting from the translation from the original file format to any other file format or from the recipient's reading of it in any other programme or any version of the programme other than that which was used to prepare it
 - the accuracy of survey information provided by others or for any costs, claims, proceedings and expenses arising out of reliance on such information
 - any scaling from this drawing other than by the local planning authority solely for the purposes of the planning application to which it relates



ALLFORD HALL MONAGHAN MORRIS
 ARCHITECTS Ltd
 MORELANDS, 5-23 OLD STREET LONDON EC1V 9HL
 TEL 020 7251 5261 FAX 020 7251 5123 WEB WWW.AHMM.CO.UK

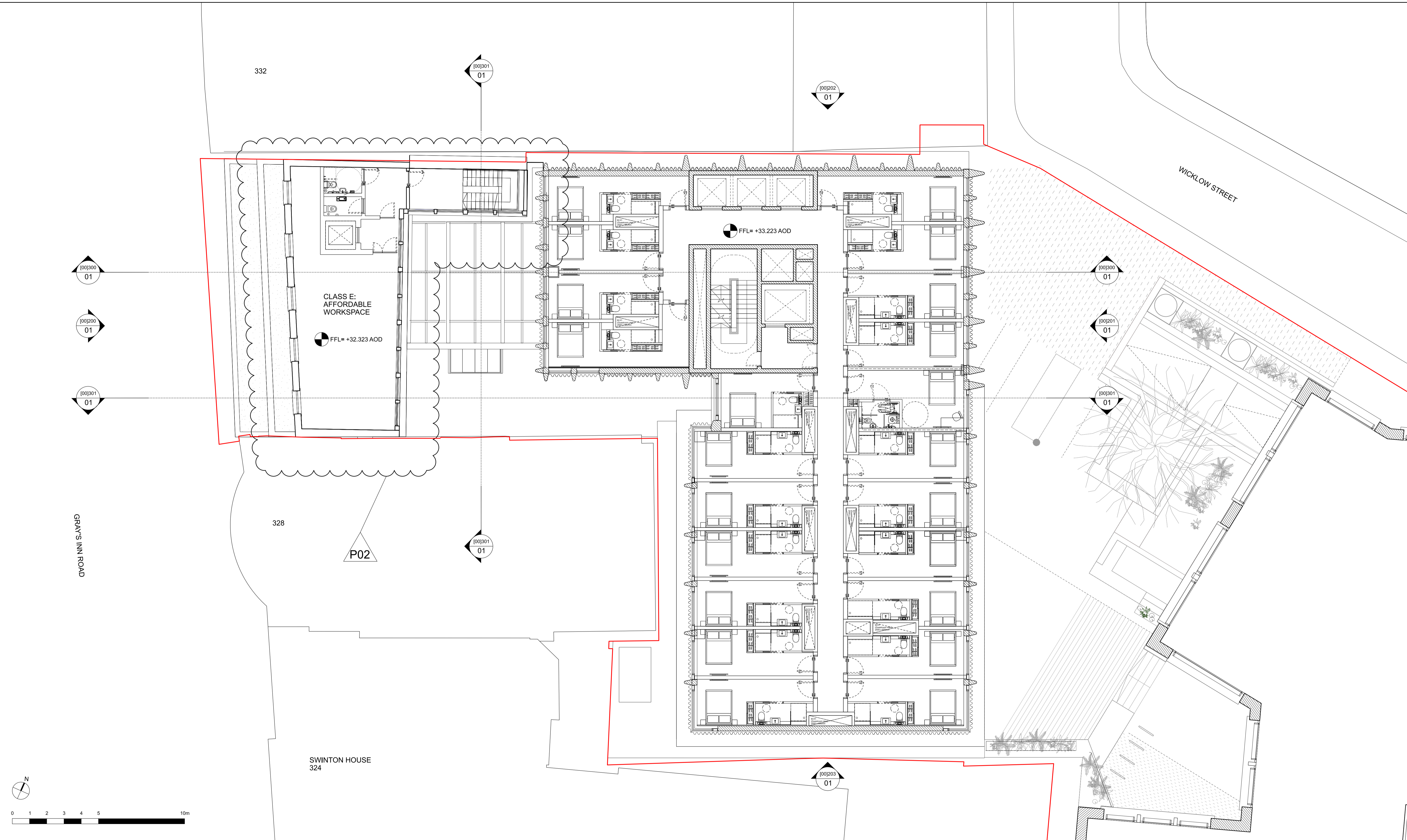
job title
330 GRAYS INN ROAD

drawing title / location
**PROPOSED HOTEL FLOOR PLANS
 THIRD FLOOR PLAN**

drawn by	checked	scale	status
HM	MH	1:100@A1; 1:200@A3	PLANNING

project	zone	source	classification	drawing no.	revision
18116	01	A	(00)_P103	P02	

© Allford Hall Monaghan Morris Limited



01 GENERAL ARRANGEMENT: FOURTH FLOOR PLAN

KEY
--- SITE BOUNDARY

REV	DATE	NOTE
P01	20/11/20	ISSUED FOR PLANNING
P02	28/02/23	ISSUED FOR PLANNING - S73 AMENDMENT

CONSULTANTS	NAME	NOTE
CLIENT:	GROVEWORLD	When this drawing is issued in uncontrolled CAD format it will be accompanied by a PDF version and is issued to enable the recipient to prepare their own documents / models / drawings for which they are solely responsible. The recipient should report all drawing errors, omissions and discrepancies to the architect. All dimensions should be checked on site by the contractor and such dimensions shall be the contractor's responsibility. Allford Hall Monaghan Morris Limited accepts no responsibility or liability for:- - any use of this drawing by parties other than the party for whom it was prepared or for purposes other than those for which it was prepared - any alterations or additions to or discrepancies arising out of changes to the background information on which the drawings are based that was current at the time of issue, and which occur to that information after it has been issued by AHMM - any loss or degradation of the information held in this drawing resulting from the translation from the original file format to any other file format or from the recipient's reading of it in any other programme or any version of the programme other than that which was used to prepare it - the accuracy of survey information provided by others or for any costs, claims, proceedings and expenses arising out of reliance on such information - any scaling from this drawing other than by the local planning authority solely for the purposes of the planning application to which it relates
STRUCTURAL ENGINEER:	WSP	
MECHANICAL ENGINEER:	XC02	
COST CONSULTANT:	TURNER TOWNSEND	
ACOUSTIC CONSULTANT:	HANN TUCKER	
TRANSPORT CONSULTANT:	STEER	
DAYLIGHT / SUNLIGHT:	POINT2	

LOCATION

ARCHITECTS	SCALE	STATUS
ALLFORD HALL MONAGHAN MORRIS	1:100@A1; 1:200@A3	PLANNING

PROJECT	ZONE	SOURCE	CLASSIFICATION	DRAWING NO.	REVISION
18116	01	A	(00)_P104	P02	