

W.03.17

NOTES :

Modern casement
Post condition
Studwall cuts across
3 panel sashes

1920s sash with horns. Historic
modest panel behind radiator
reflecting floor hierarchy.
Medium to high significance.
Bay rebuilt 1926.



W.02.19

NOTES :

Weighted sash
6 panel sashes
Shutter box non functioning
Concealed radiator below
OK condition

Rear bay rebuilt 1926 - 1926
windows and shutter boxes
matching rear bay on other
levels.
Low to medium significance.



W.01.18

NOTES :

Weighted sash
6 over 9 panel sashes
Painted shutters
Pipework through panels

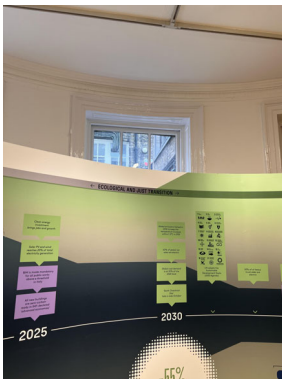
No shutters present only single panels
with modest details.
Likely to be 1920s fabric introduced after
rear bay reconstructed. Windows with
horns in a 1920s style.
Medium significance.



W.00.15

NOTES :

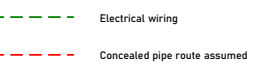
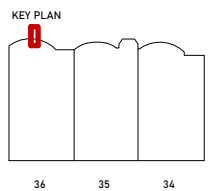
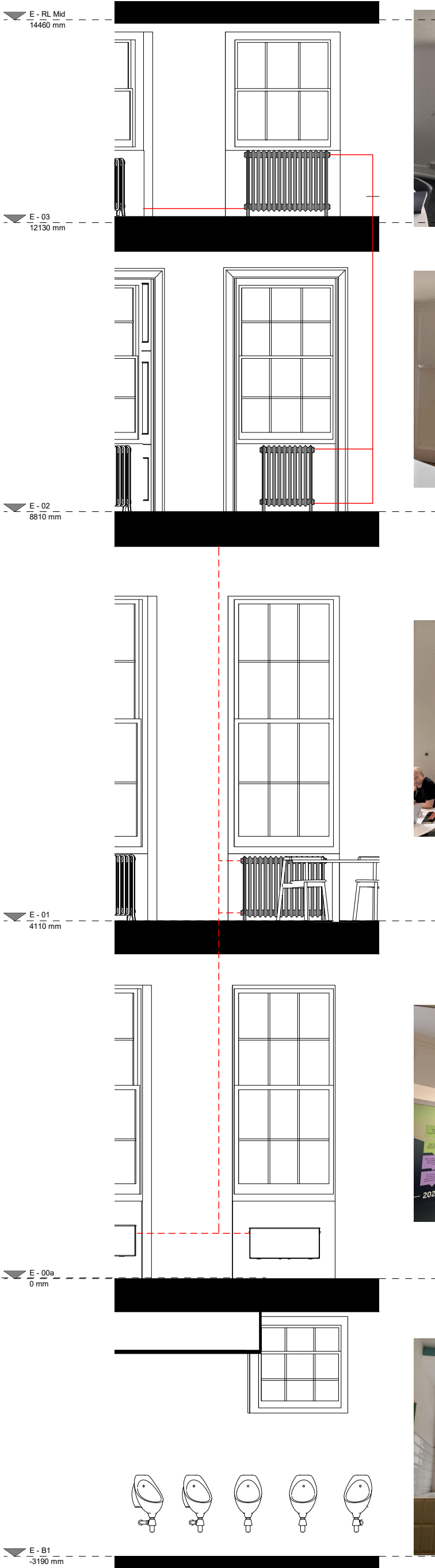
No shutters present only single
panels with modest details.
Likely to be 1920s fabric
introduced after rear bay
reconstructed. Windows with
horns in a 1920s style.
Medium significance.



W.B1.12

NOTES :

1920s window in rebuilt bay
(1926).
Low to medium significance.



Rev	Date	Description	Author	Checker

Scale at A1 / A3

1:25 / 1:50



Drawing Name

**Existing Internal Elevations
Window Stack 20**

Drawing Number Revision
BW125 - BW - ## - XX - DR - E3020