

W.03.08

NOTES :

Modern casement
Post condition
Studwall cuts across
3 panel sash

1920s sash window with horns.
No panelling or other detail
beyond modest architrave.



W.02.11

NOTES :

Weighted sash
6 panel sashes
OK condition
Manually operated blinds

1920s sash windows with horns.
Original shutter and simple
panelling below window. Much
painted over, fixed and filled.
Lost definition.
Medium to high significance.



D.01.14

NOTES :

Weighted sash
Fire Escape Door
Manually operated blinds

Window opening converted to a door
opening with modern door.
Lowest significance.
Shutters painted over and fixed shut.
Mouldings to shutters do not
match those to the front room but instead
are closer in character to
the front room shutters of 35 and 36.
Medium to high significance.



W.00.07

NOTES :

Weighted sash
6 panel sashes
Mirror
Electric operated blinds

20th century window with
mirrored glazing.
Shutters painted over and fixed
shut. Mouldings do not match
others in the building and
appear to lack detail indicative
of later replacement.

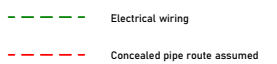
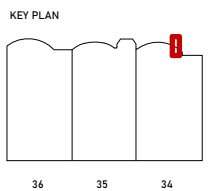
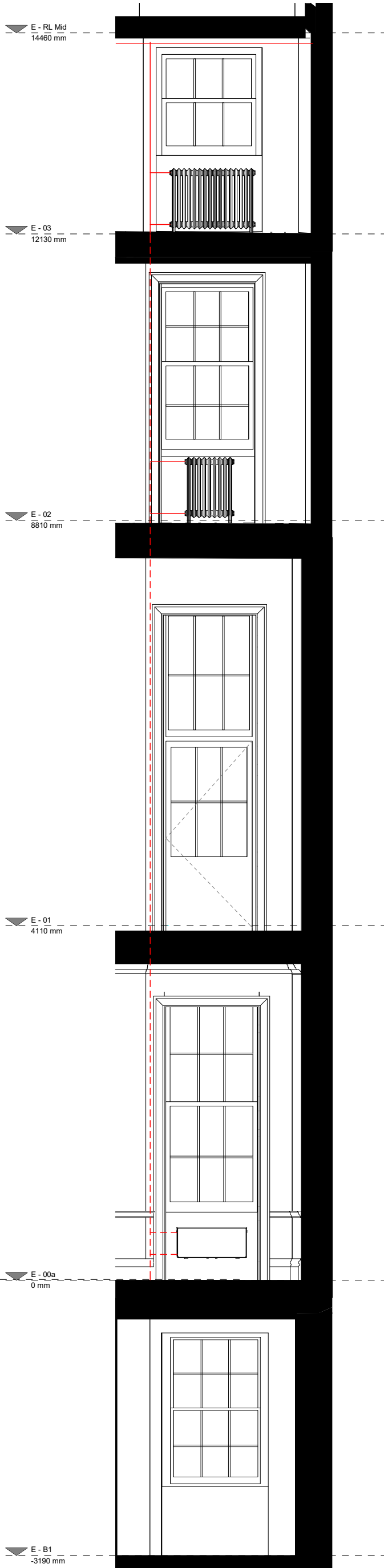


W.B1.07

NOTES :

Window has been blanked
Timber frame remains with
glazing removed.

Not inspected.



Rev	Date	Description	Author	Checker
-----	------	-------------	--------	---------

Scale at A1 / A3

1:25 / 1:50



Drawing Name
**Existing Internal Elevations
Window Stack 11**

Drawing Number Revision
BW125 - BW - ## - XX - DR - E3011