

W.03.01

NOTES :

Modern casement
Post condition
Studwall cuts across

Modern casement window.
Lowest significance.
No related detail of historic interest.
No related detail of interest.
Non original dormer (widened pre-existing).



W.02.01

NOTES :

Weighted sash
6 panel sashes
OK condition
Manually operated blinds

Original shutters and architrave with simple panelled linings beneath window.
Openable shutters in good condition. Highest significance.
Early 20th century window with horns and flatter glazing bars. Medium significance.



W.01.01

NOTES :

Weighted sash
6 over 9 panel sashes
Painted shutters
Pipework through panels

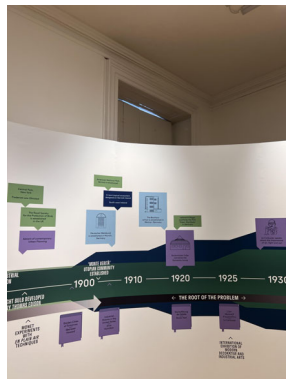
Shutters in square reveals with mouldings similar to no. 35. Appear to be original. Both sides fixed shut and painted over with signs of repair and much overpainted.
Historic plans show RHS opened up for pipework in 1926. Highest significance.
Six over nine sash window with rounded glazing bars.
No horns. Highest significance.



W.00.01

NOTES :

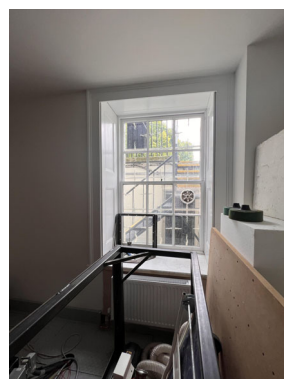
Square reveals to former no. 35 with shutters painted shut. Reasonable condition. Highest significance.
Windows have horns and glazing bars that lack the finesse of original windows suggesting post late Victorian date. Glazing bar pattern matches the 1919 front door suggesting all of the windows at ground floor were altered to match.



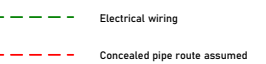
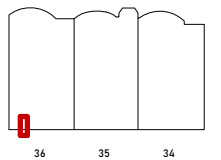
W.B1.01

NOTES :

New radiator
Historic window possibly 20th century but without horns. Very modest detailing.
Medium significance.



KEY PLAN



Rev	Date	Description	Author	Checker

Scale at A1/A3

1:25 / 1:50



Drawing Name

Existing Internal Elevations
Window Stack 09

Drawing Number Revision
BW125 - BW - ## - XX - DR - E3009

