

W.03.06

NOTES :

Modern casement
Poor condition
Studwall cuts across

Modern casement window.
Lowest significance.
No related detail of interest.
Non original dormer (widened pre-existing).

W.02.09

NOTES :

Weighted sash
6 panel sashes
Shutter box non functioning
Concealed radiator below
OK condition
Manually operated blinds

Good quality historic window without horns. Historic shutters much painted over. Reasonable condition. Radiator box below obscuring window details. High significance.

W.01.09

NOTES :

Weighted sash
6 over 9 panel sashes
Shutters historic and original
Painted sash
Manually operated blinds
Pipework through panels
Panels damaged and in bad condition

Chamfered reveals and shutters original although in a poor condition. Left hand side shutter one of few openable shutters. High significance.
Windows have no horns and appear to be original to the building although the glazing is later and sources record that the windows of the first floor were blown out (including glazing bars) during WWII. In addition, it has been reported that the windows to no. 34 were replaced in the 1920s to match those at no. 35 (the windows to no. 34 having been replaced in the 19th century). Given the importance of the first floor windows and appropriate detailing these are considered to be of the highest Significance.

XB.00.02

NOTES :

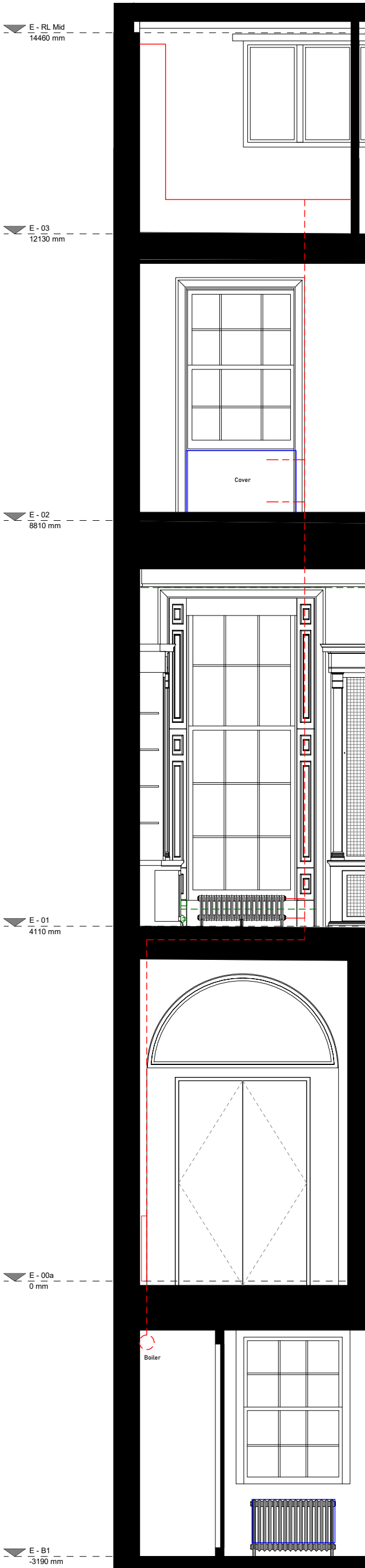
New radiator in foyer
Original historic entrance doorway

Modern doors of the early-mid 20th century.
Matching central window to no. 35.
Medium significance.

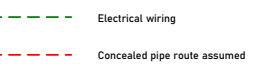
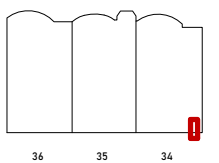
W.B1.06

NOTES :

New radiator
Historic window possibly 20th century but without horns. Very modest detailing.
Medium significance.



KEY PLAN



Rev	Date	Description	Author	Checker

Scale at A1 / A3

1:25 / 1:50



Drawing Name

Existing Internal Elevations
Window Stack 01

Drawing Number Revision

BW125 - BW - ## - XX - DR - E3001