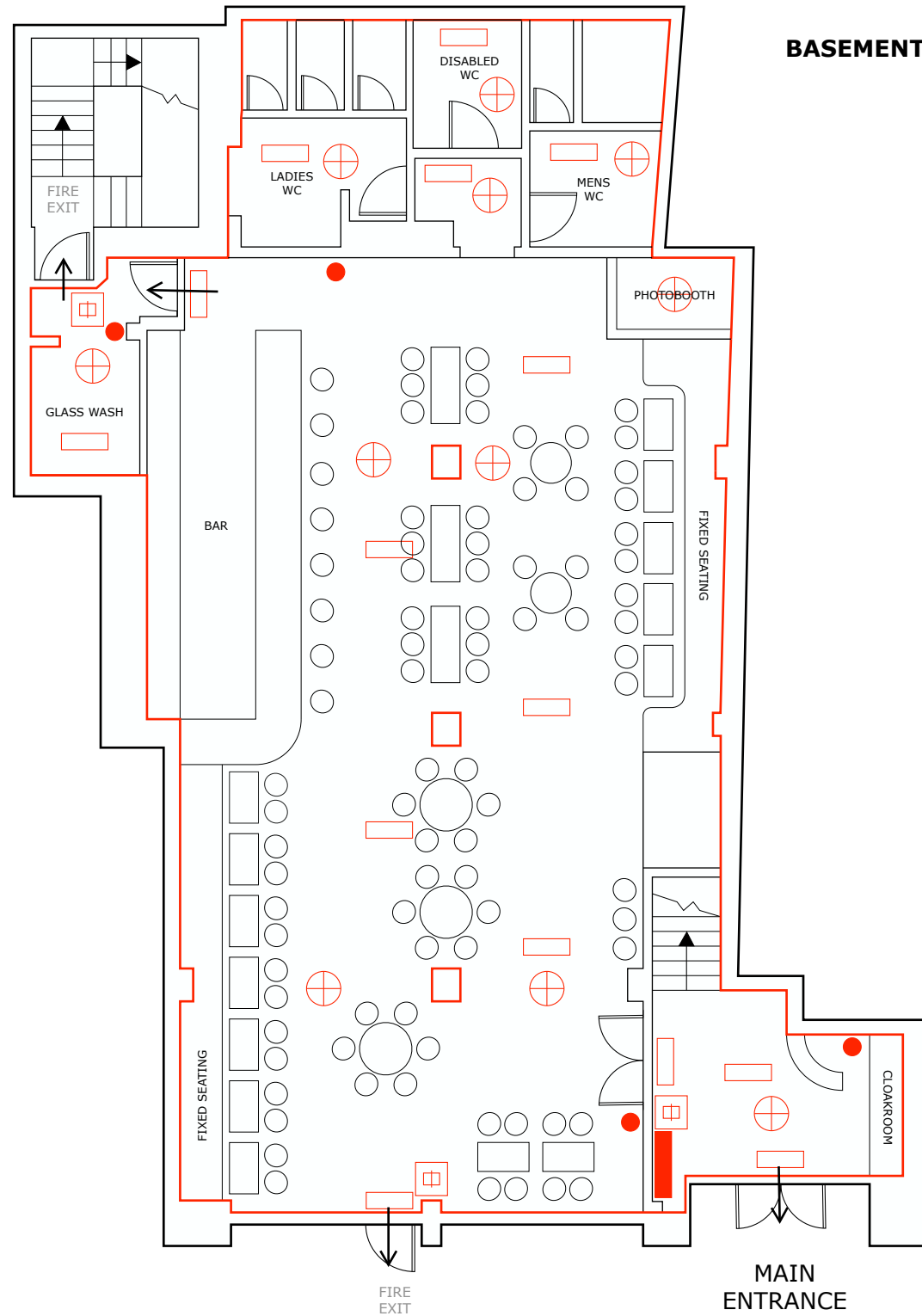


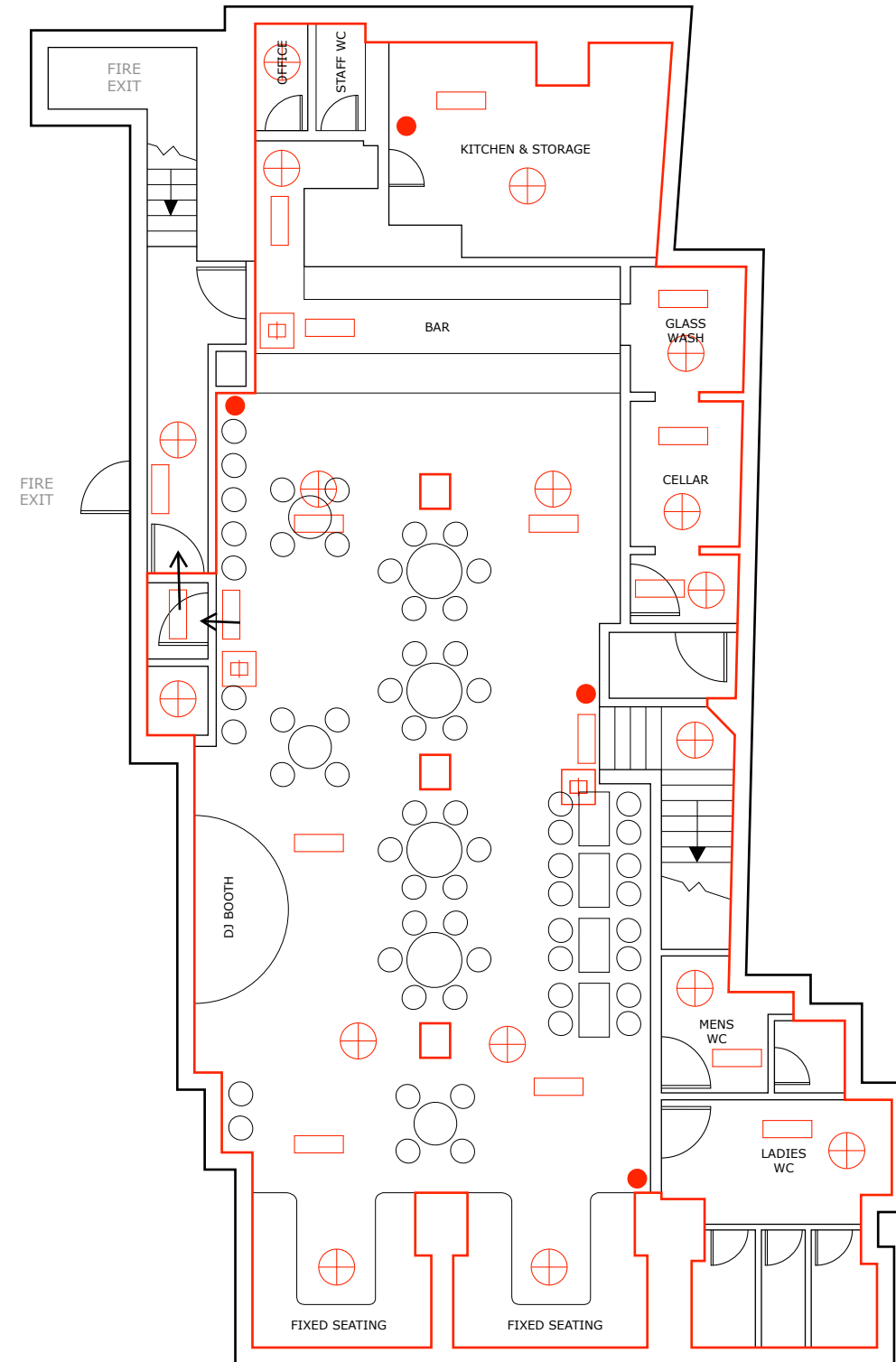
**SIMMONS BAR | HOLBORN**  
 109 KINGSWAY, WC2B 6PP  
 GROUND FLOOR & BASEMENT LEVEL

- |   |                       |   |                     |
|---|-----------------------|---|---------------------|
|  | FIRE PANEL            |  | FIRE EXTINGUISHER   |
|  | MAGNETIC DOOR RELEASE |  | SMOKE/HEAT DETECTOR |
|  | MANUAL CALL POINT     |  | EMERGENCY LIGHTING  |

**GROUND FLOOR:**



**BASEMENT:**



PARKER STREET

*The location and type of any fire safety and any other safety equipment is shown as 'at present'; this may be varied from time to time with the agreement of the Fire Officer or after a fire risk assessment. Anything shown on this plan which is not required by the Plans Regulations for the Licensing Act 2003 is for illustrative purposes only and does not form part of the licence*

Building Outline is shown edged black.