

6.0 Affordable Workspace

6.0 Affordable Workspace

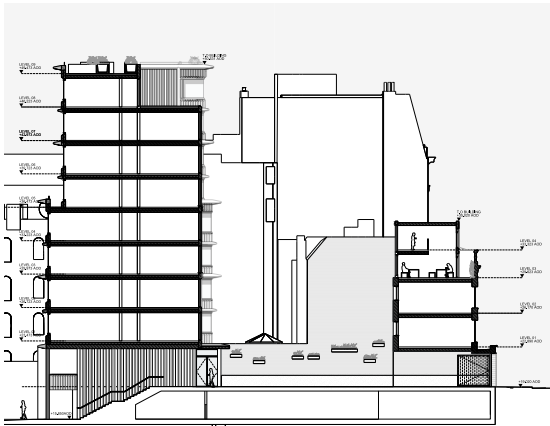
6.1 Consented Scheme

Affordable Workspace Location

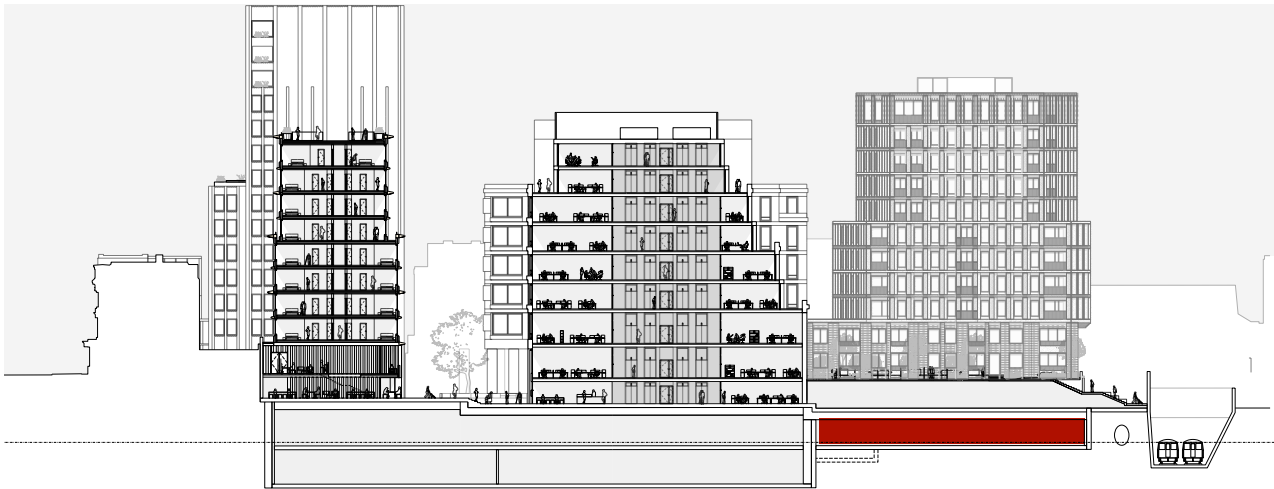
In the consented scheme the affordable workspace is located at the base of the market residential building on Wicklow Street across the ground floor and lower ground floor below. To accommodate the additional area required by the Section 73 proposal this affordable workspace area is converted to laboratory enabled space. The affordable workspace is being relocated to the retained RNTNE building fronting Gray's Inn Road.

Consented Affordable Office Area: 930m² GIA

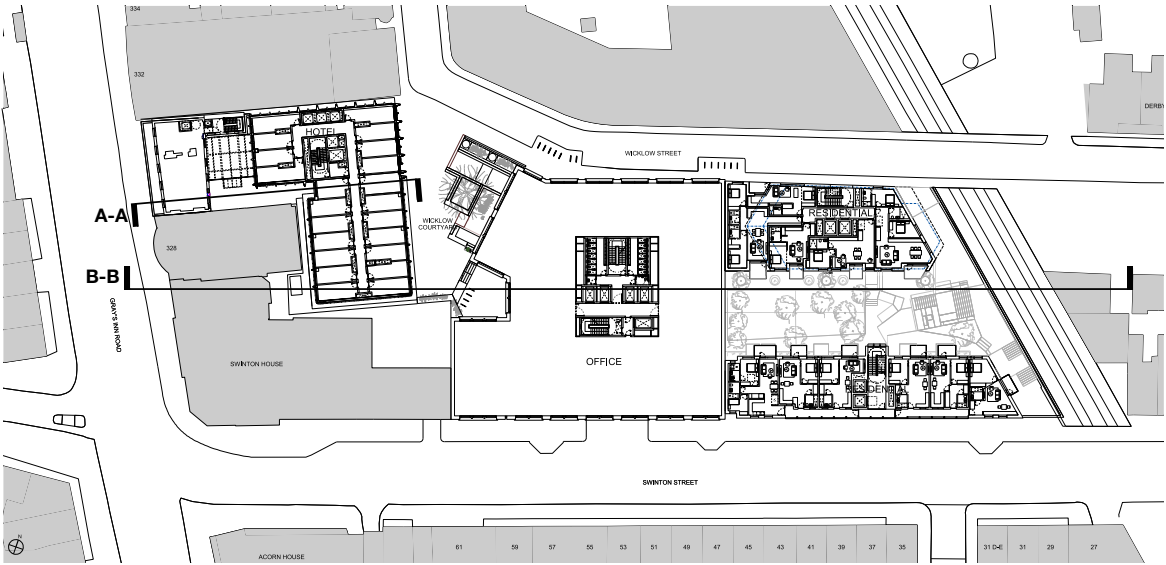
Key:
■ Class E: Affordable Workspace



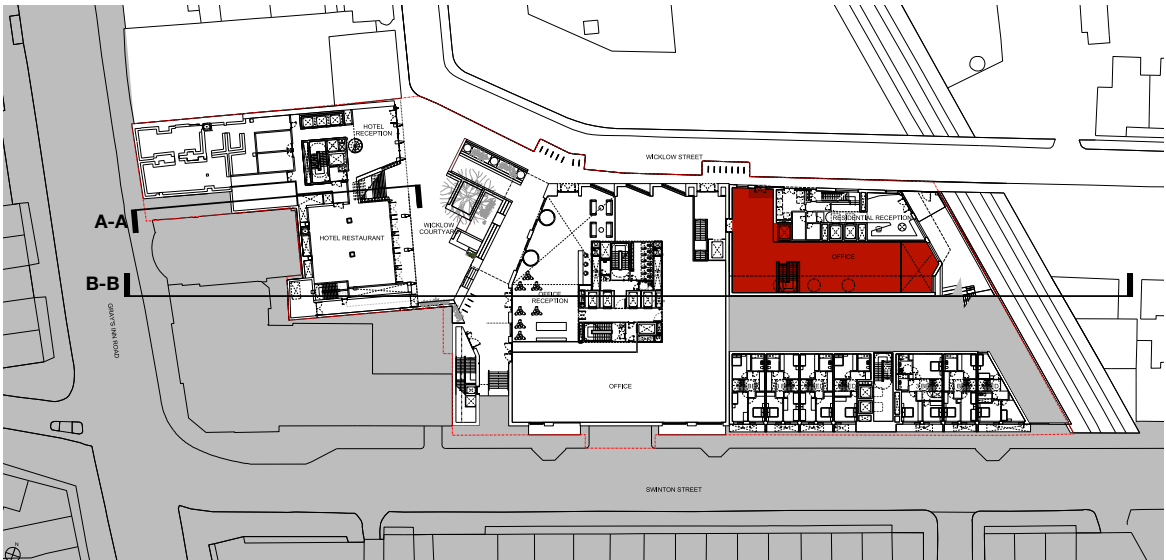
Consented Section A-A



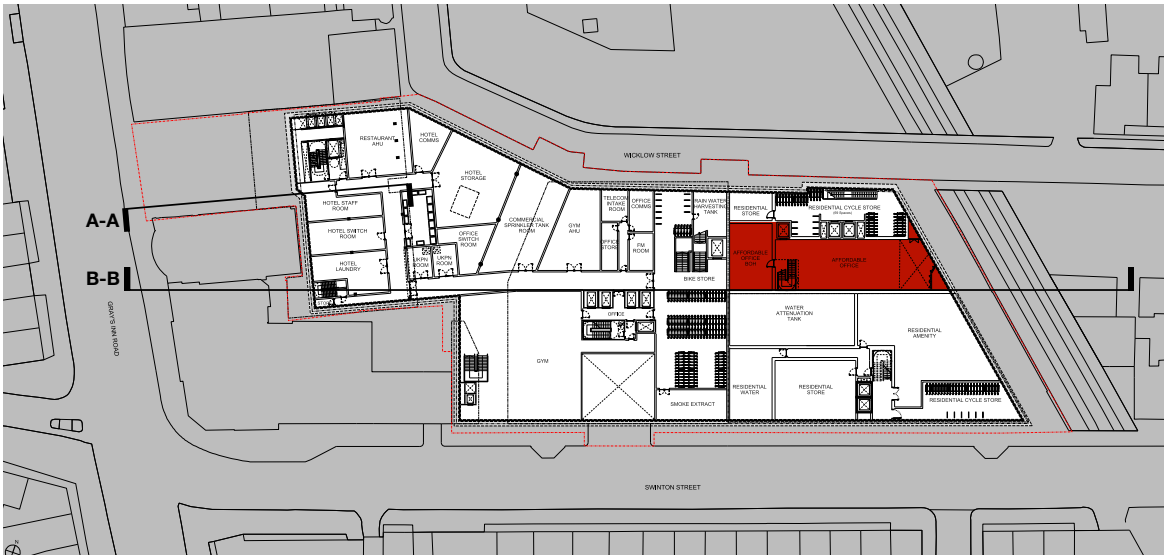
Consented Section B-B



Consented First Floor Level



Consented Lower Ground Level - Wicklow Street



Consented Basement Level