

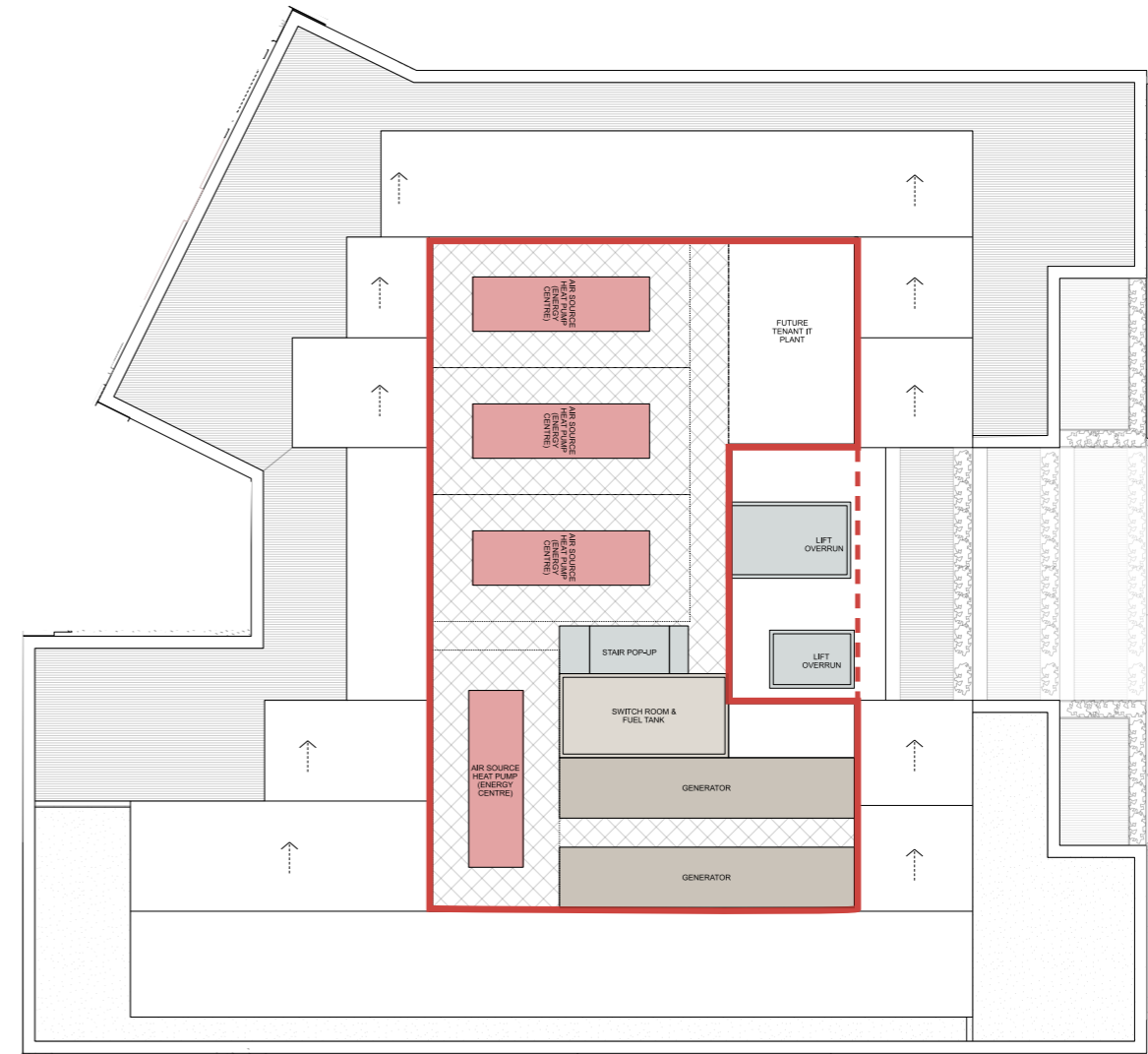
## 5.0 Office Roof Plant

# 5.0 Office Roof Plant

## 5.1 Consented Office Roof Plant

### Consented Roof Plant

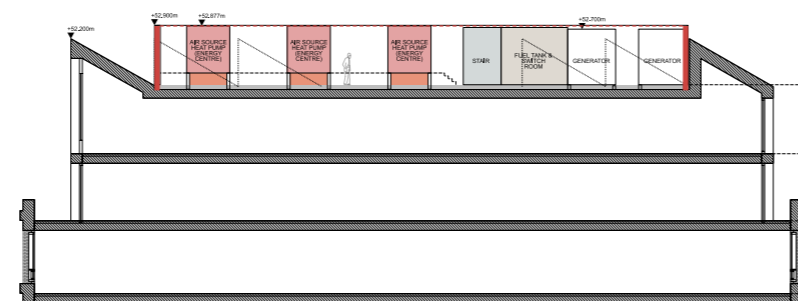
The Consented scheme was adjusted during the planning determination period to reduce the footprint of the roof plant space. Air source heat pumps were optimised as part of the site wide energy strategy and generators for life safety and business continuity were modified. The size of the roof plant area to accommodate these did not account for the increase in laboratory enabled area as part of this Section 73 requirement.



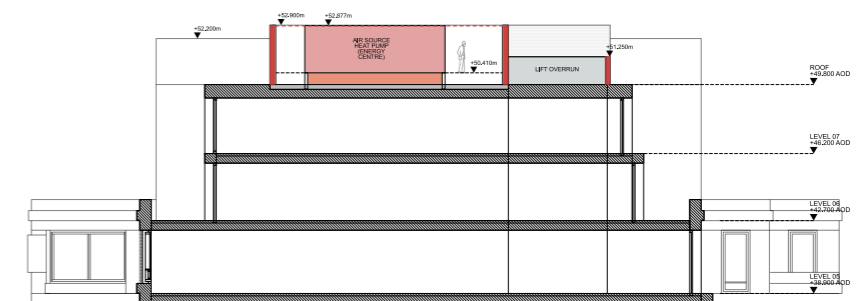
Consented Scheme  
Roof Plant Plan



Office Building Roof



Consented Scheme  
Long Section



Consented Scheme  
Short Section

# 5.0 Office Roof Plant

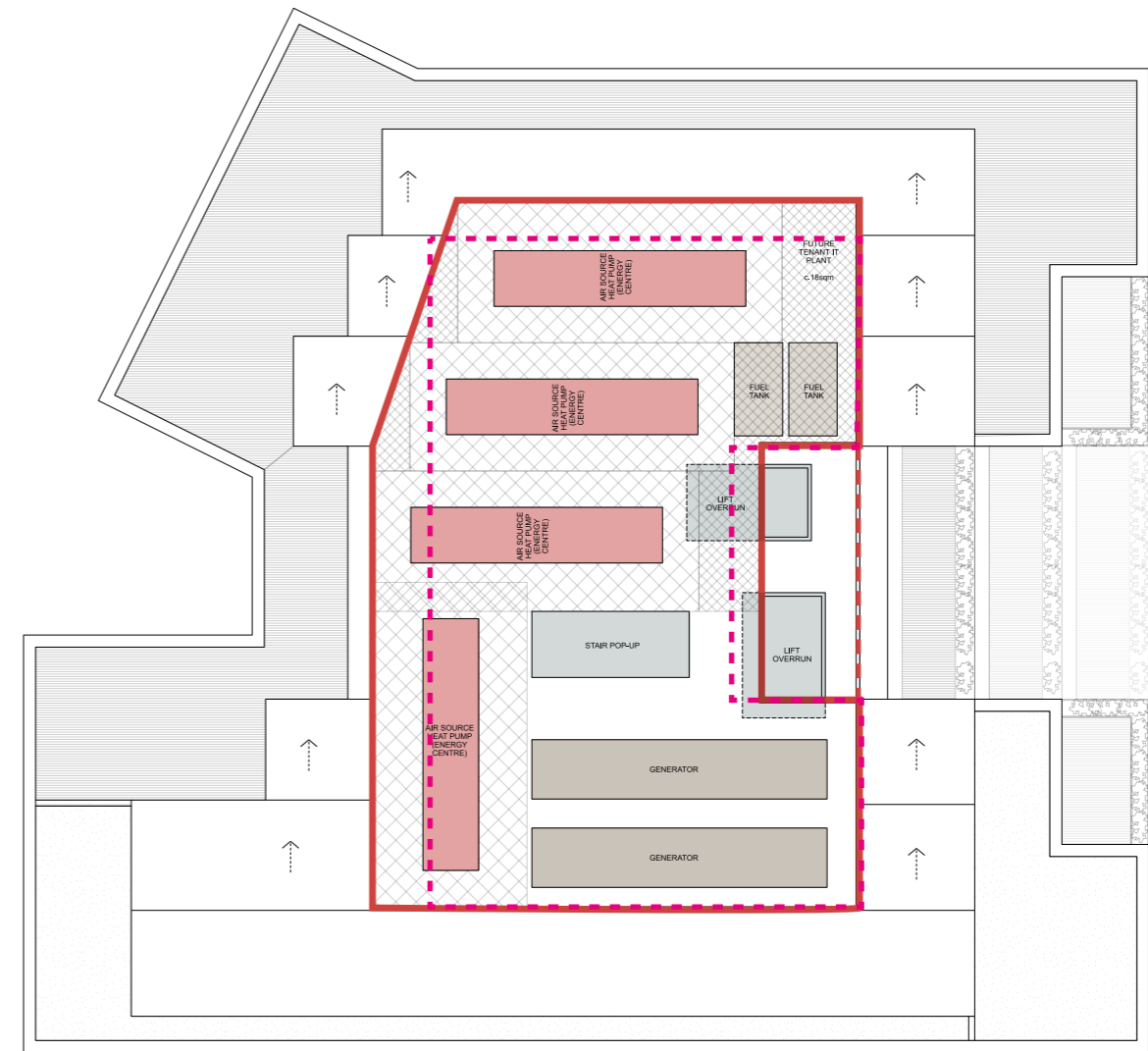
## 5.2 Proposed Office Roof Plant

### Proposed Roof Plant

The introduction of the new UCL laboratory enabled space has required changes to the office roof plant. The air source heat pumps have become larger and has led to a change of the plant layout which has been extensively reviewed to enable a layout that mitigate any substantial increase in height or footprint.

There is no increase of the plant screen height for the proposed scheme. There are minor adjustments to the screen footprint which is not adversely different from consented in surrounding street views.

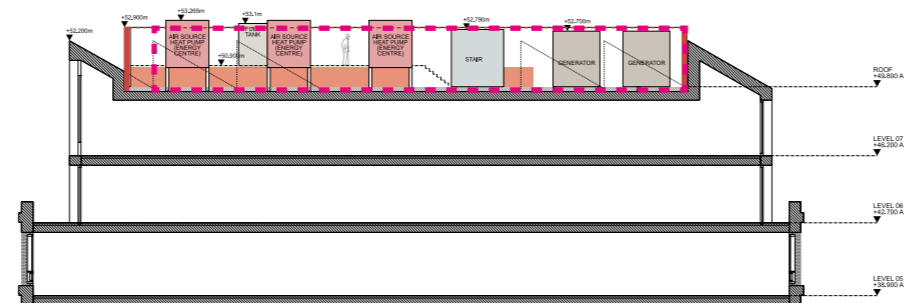
Consented Scheme Roof Plant Extents - - - -



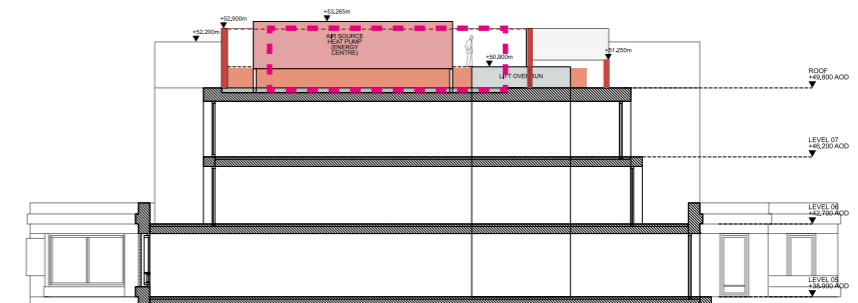
Consented Scheme  
Roof Plant Plan



Office Building Roof



Proposed Scheme  
Long Section



Proposed Scheme  
Short Section

# 5.0 Office Roof Plant

## 5.3 Townscape Views - Wicklow Bend

### Proposed Roof Plant

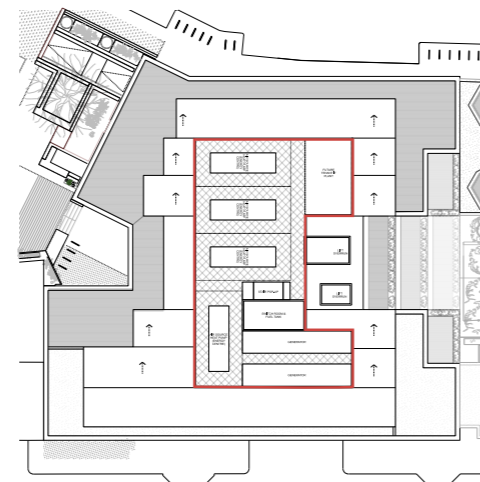
The Proposed change is not visible from Wicklow St bend townscape view.



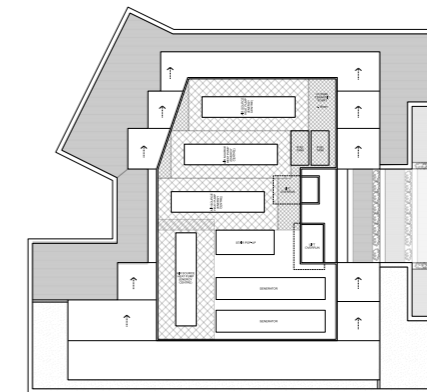
**Consented Scheme**  
Wicklow Bend View



**Proposed Scheme**  
Wicklow Bend View



**Consented Scheme**  
Office Roof Plan



**Proposed Scheme**  
Office Roof Plan

# 5.0 Office Roof Plant

## 5.4 Townscape Views - Residential Garden

### Proposed Roof Plant

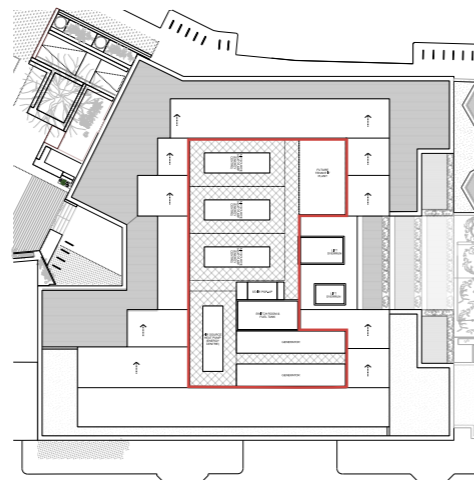
The Proposed change is not visible from residential garden townscape view.



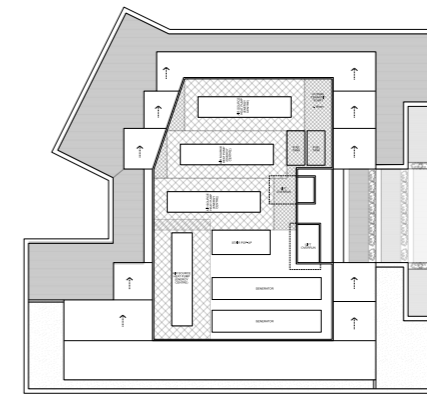
**Consented Scheme**  
Residential Garden View



**Proposed Scheme**  
Residential Garden View



**Consented Scheme**  
Office Roof Plan



**Proposed Scheme**  
Office Roof Plan

# 5.0 Office Roof Plant

## 5.5 Visibility from AVR views

The proposed scheme has undergone a full update to the verified views.

Two key views capture the consented rooftop plant space which are shown here.

The following pages show the AVR views as submitted, with the updates to align to the revised proposal undertaken during determination and consented, and the adjustments of this amended proposal.



LVMF 2A.1 Parliament Hill



LVMF 3A. 1 Kenwood



View 3 | King's Cross Square, Central



View 4 | King's Cross Square / York Way



View 5 | Gray's Inn Road / St Chad's



View 6 | Gray's Inn Road / Britannia



View 7 | Gray's Inn Road / Argyle Street



View 8 | Argyle Street, outside no. 64



View 9 | Argyle Square / St. Chad's



View 10 | Grays Inn Road / Cromer



View 11 | Mecklenburgh Square



View 12 | Farringdon Road / Exmouth



View 13 | Farringdon Road / Calthorpe



View 14 | Great Percy Street



View 15 | Percy Circus / Prideaux Place



View 16 | Ampton Street / Ampton Place



View 17 | Acton Street / Swinton Place



View 18 | King's Cross Road / Swinton



View 19 | Penton Rise / Penton Square



View 20 | Wicklow Street / King's Cross



View 21 | Britannia Street Bridge



View 22 | Wicklow Street / St Chad's



View 23 | Northdown Street / Pentonville



View 24 | Caledonian Road / Killick



View 25 | Acton Street Bridge

# 5.0 Office Roof Plant

## 5.5 Visibility from AVR views



**Submitted Scheme**  
AVR View 18 - zoomed



**Consented Scheme**  
AVR View 18 - zoomed



**Proposed Scheme**  
AVR View 18 - zoomed



**AVR View 18 - full view**

# 5.0 Office Roof Plant

## 5.5 Visibility from AVR views



**Submitted Scheme**  
AVR View 20 - zoomed



**Consented Scheme**  
AVR View 20 - zoomed



**Proposed Scheme**  
AVR View 20 - zoomed



**AVR View 20 - full view**