

Lighting

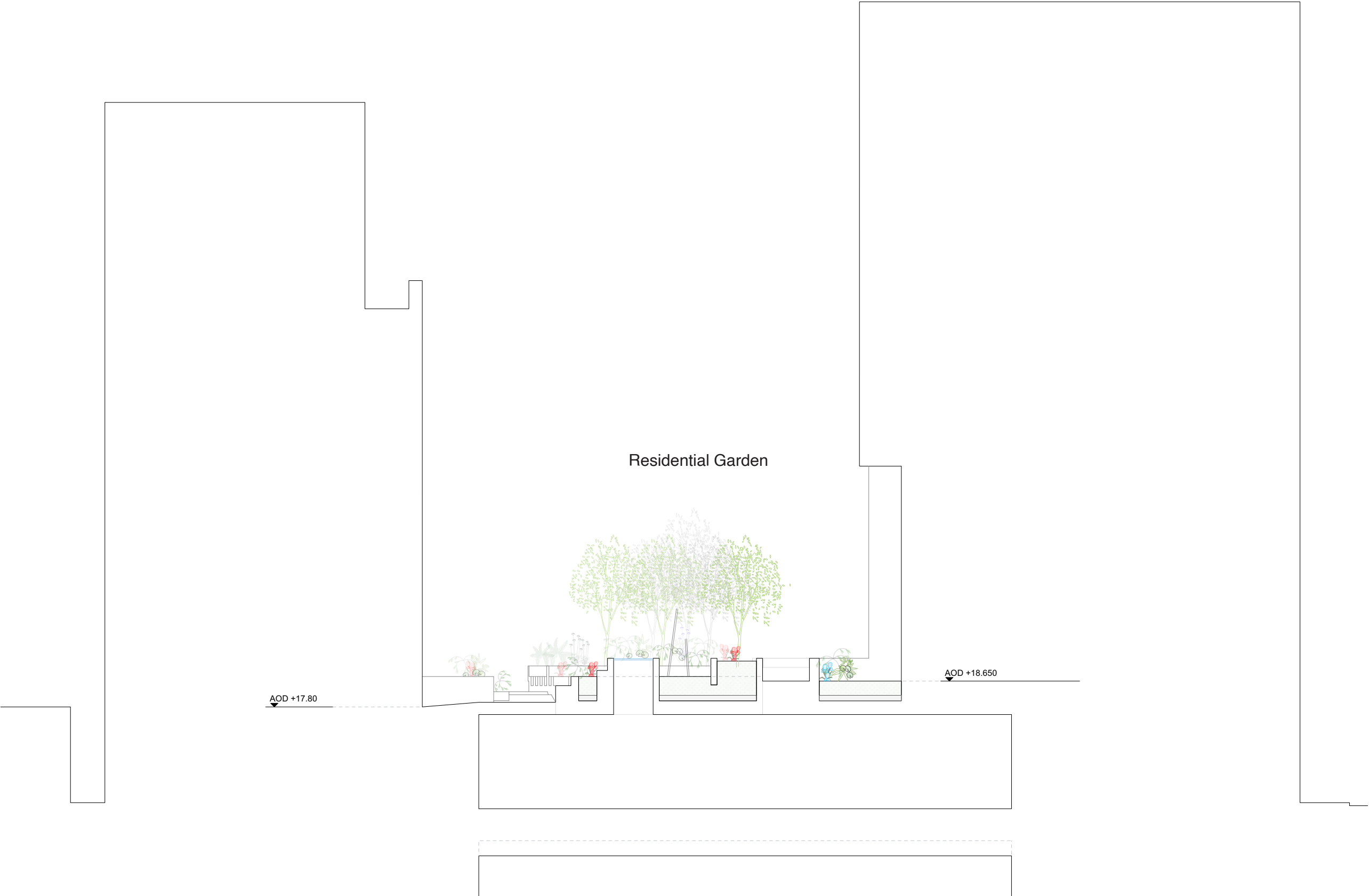
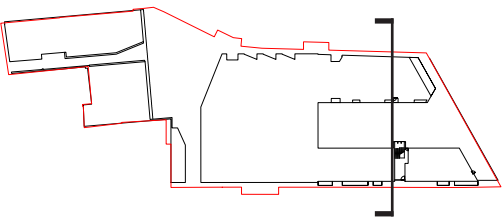
Please refer to page 85 of Public Realm Planning Report.

The specification of lighting elements is retained from the consented scheme. The addition of the raised planter in the centre of the garden has been supplemented with additional low-level lighting, enabling access in the early evening.

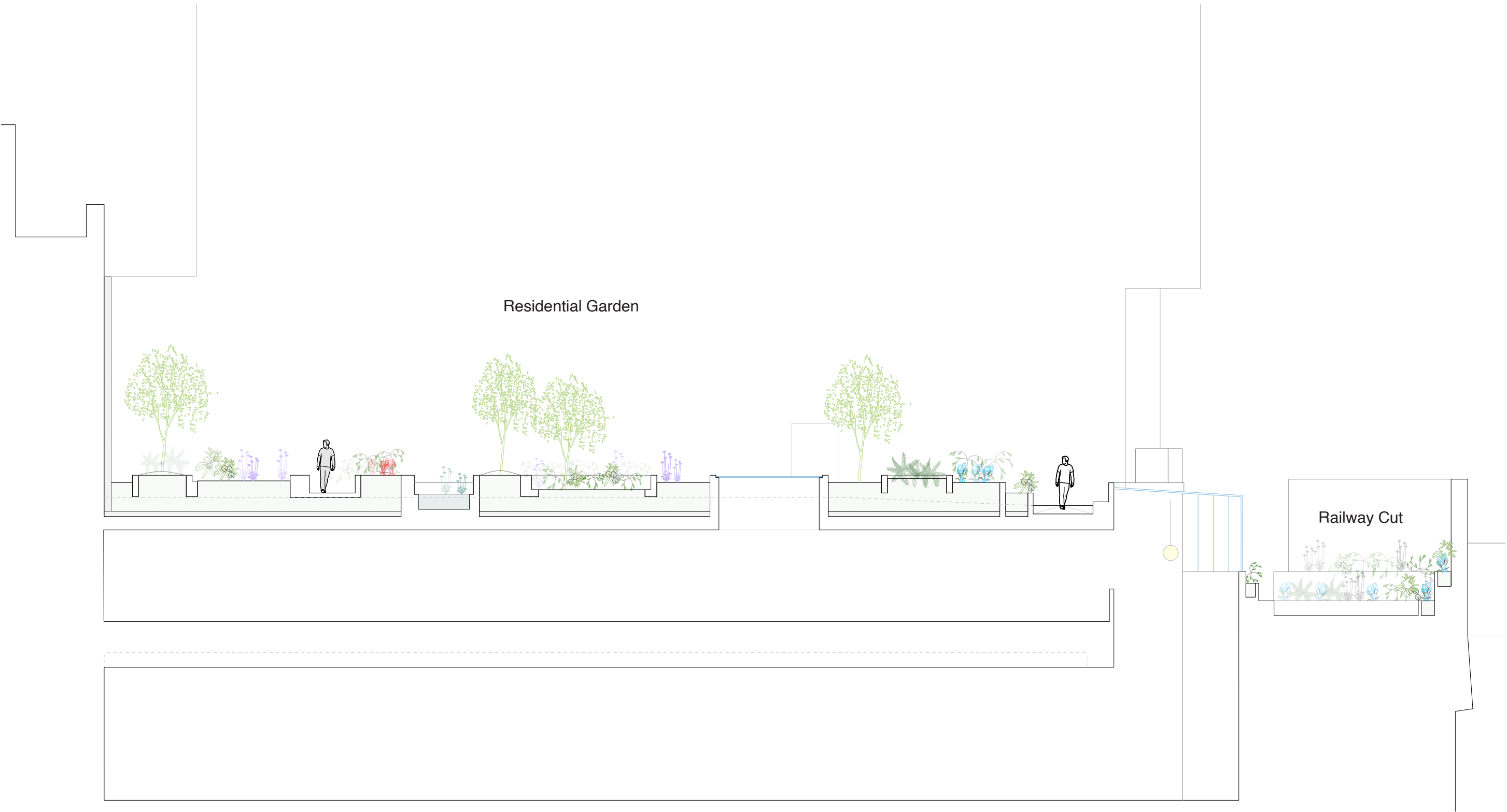
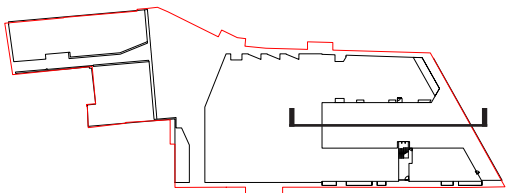
-  LIT INDOORS / SIGN
-  TREE LIGHTING TO KEY SPACES AND ENTRANCES
-  STREET LIGHTING
-  VEGETATION UP LIGHTING
-  BOLLARD / LOW LEVEL LIGHTING
-  INTEGRATED WALLS / SOFFITS LIGHTING
-  ADAPTIVE EVENT AND SEASONAL LIGHTING SUCH AS CHRISTMAS LIGHTS



Residential Garden - Short Section



Residential Garden - Long Section



# EAST-330 Gray's Inn Road Trees Schedule

Location	Ref no.	Tree species		Form / shape	Deciduous (D) / Evergreen (E)	Quantities	Clear Trunk height	Estimated canopy spread when mature	Estimated tree height when mature
						Sub-totals	m	cm	m
Wicklow Yard						1			
	Jn	<i>Juglans nigra</i>	Black walnut	Standard	D	1	3+	800-1200	10-12m
Railway residential garden						40			
Lower garden									
	Bp	<i>Betula pubescens m/s</i>	Downy Birch	Multi-stem	D	12	2+	1000-1500	3-3.5m
	Bpe	<i>Betula pendula</i>	Silver Birch	Multi-stem	D	9	2+	1000-1500	3-3.5m
Upper terrace and stairs									
	Bn	<i>Betula nigra m/s</i>	River Birch	Standard	D	3	2+	2000-2500	4-5m
	Bp	<i>Betula pubescens m/s</i>	Downy Birch	Standard	D	2	2+	2000-2500	4-5m
Rain gardens									
	Bp	<i>Betula pubescens m/s</i>	Downy Birch	Multi-stem	D	5	1+	700+	1.5m+
	Bpe	<i>Betula pendula</i>	Silver Birch	Multi-stem	D	9	1+	700+	1.5m+
Total						41			

