

# Gray's Inn Road Public Realm

## Contents

|                                   |    |
|-----------------------------------|----|
| Introduction                      | 07 |
| Public Realm and Landscape        | 09 |
| Landscape Masterplan              | 11 |
| Site Strategy                     | 19 |
| Design Principles                 | 13 |
| Railway garden landscape plan     | 17 |
| Design                            |    |
| Public realm and landscape levels | 19 |
| Railway Garden Materials Strategy | 21 |
| Tree Planting Plan                | 23 |
| Planting Plan                     | 27 |
| The Railway Cut                   | 29 |
| Play                              | 31 |
| Upper Railway Garden              | 33 |
| Lighting Strategy                 | 35 |
| Sections                          | 37 |
| Tree schedule                     | 43 |

Team Overview

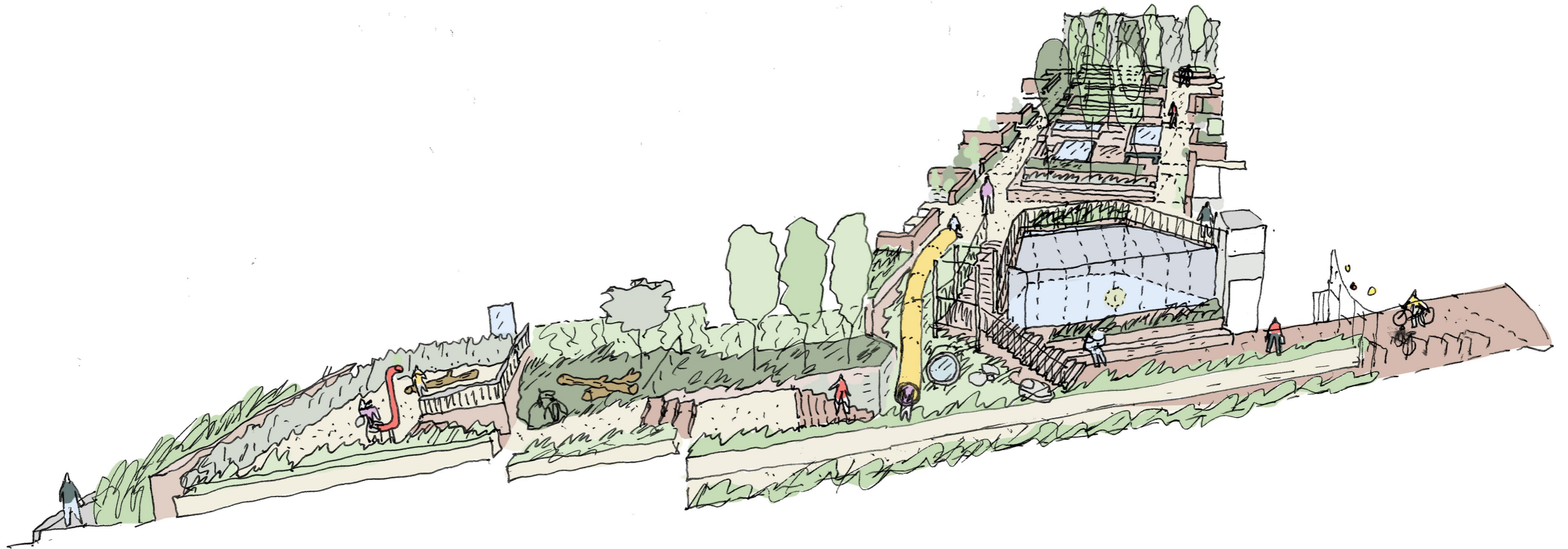
The Design Team

East Architecture  
Landscape Urban Design

East is an award winning architecture, landscape and urban design practice established in London since 1995. East has extensive experience of working on projects that are engaged in the city. We concentrate on projects of public relevance, and we have a close understanding of urban change. Housing projects come out of that interest, influencing the way in which each design engages with the spaces and uses in its context. Throughout the design process, we are able to look beyond the site boundary, to contextualize a proposal and reveal opportunities for wider positive impact. Our work has come to be internationally recognized for its patient and innovative role in adjusting and improving the urban fabric. Working with the existing and seeking to understand the physical and context of our proposals remains integral to how we develop our designs.

Contributors

- Client: Groveworld
- Lead Architect : AHMM
- Planning Consultant: Gerald Eve



Revised proposals for the Railway Garden incorporating expanded planting areas and integrated play

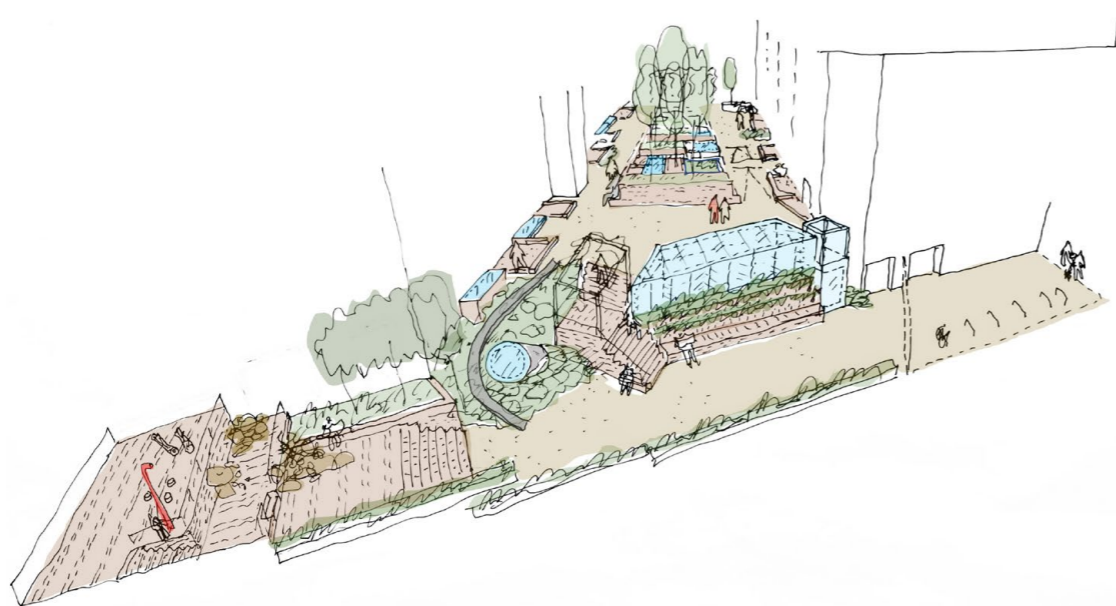
Introduction

This document presents revisions to the consented Public Realm scheme for Gray's Inn Road, in support of a revised drawing pack.

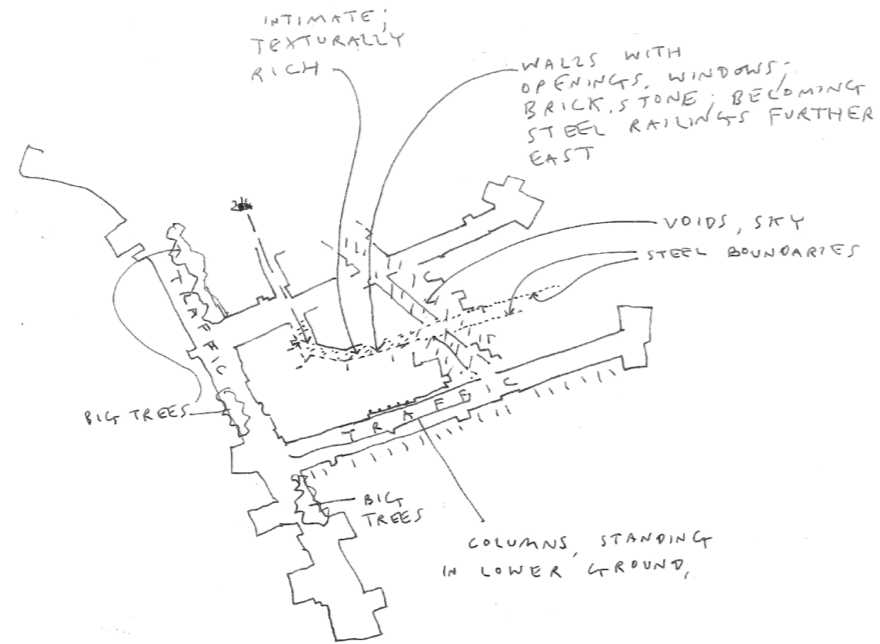
Revisions to the basement areas of the proposed have necessitated a revised scheme for the Railway Garden. Key considerations for the revised scheme are as follows:

- New levels need to be considered
- A raised central area is required to provide adequate soil volume for proposed trees
- Increased natural light to the basement area is required, necessitating additional roof lights in the garden space
- There is a desire for an external lift between the upper and lower gardens to be included

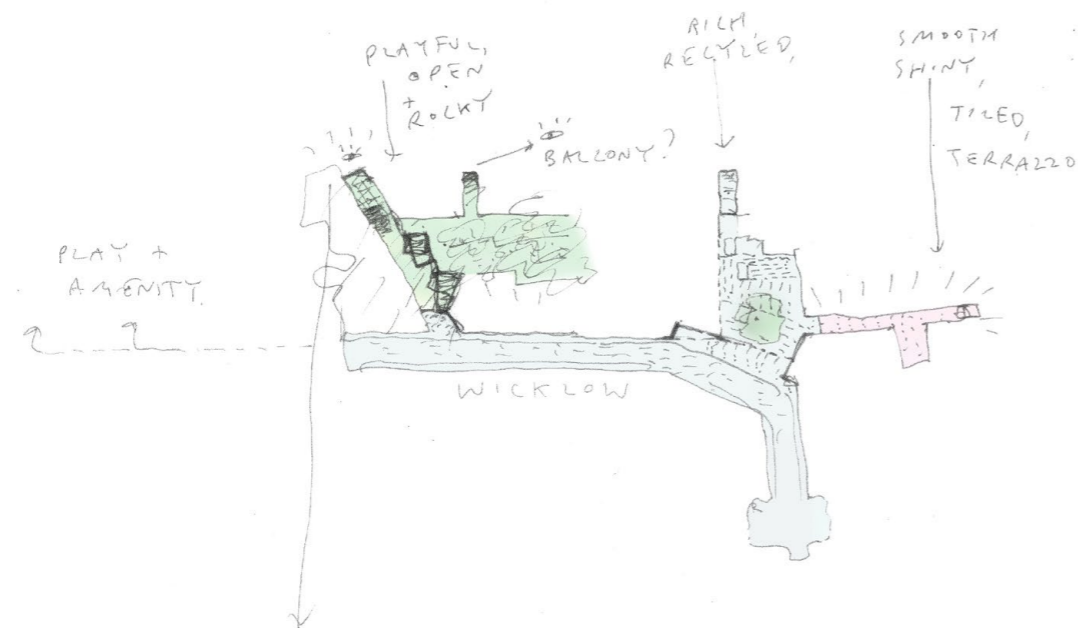
No changes are required to the Wicklow Yard proposals. This supplementary document is to be read in conjunction with consented Public Realm Planning Report, which is referenced directly in this document.



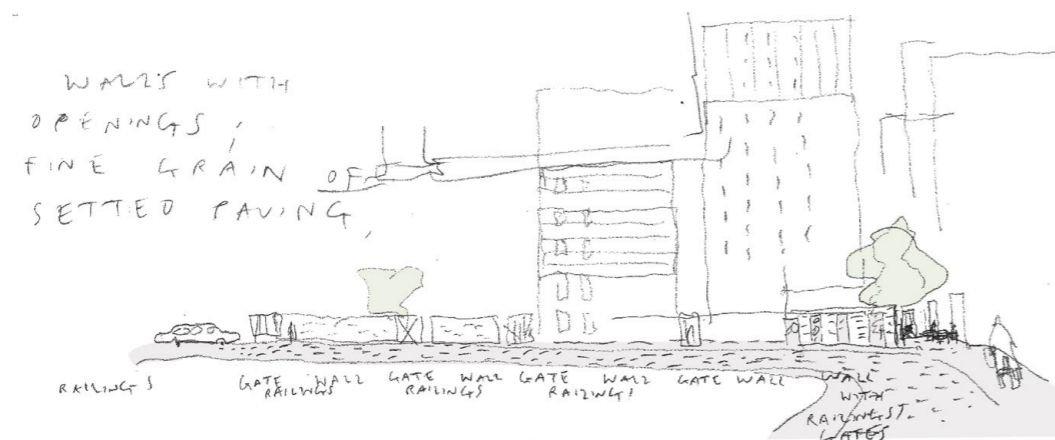
Early development of proposal for the Railway Garden



The urban fabric and character informs the design and the proposal retains a rich and intimate materiality



Providing a new public city courtyard, and a new Railway garden for residents to enjoy



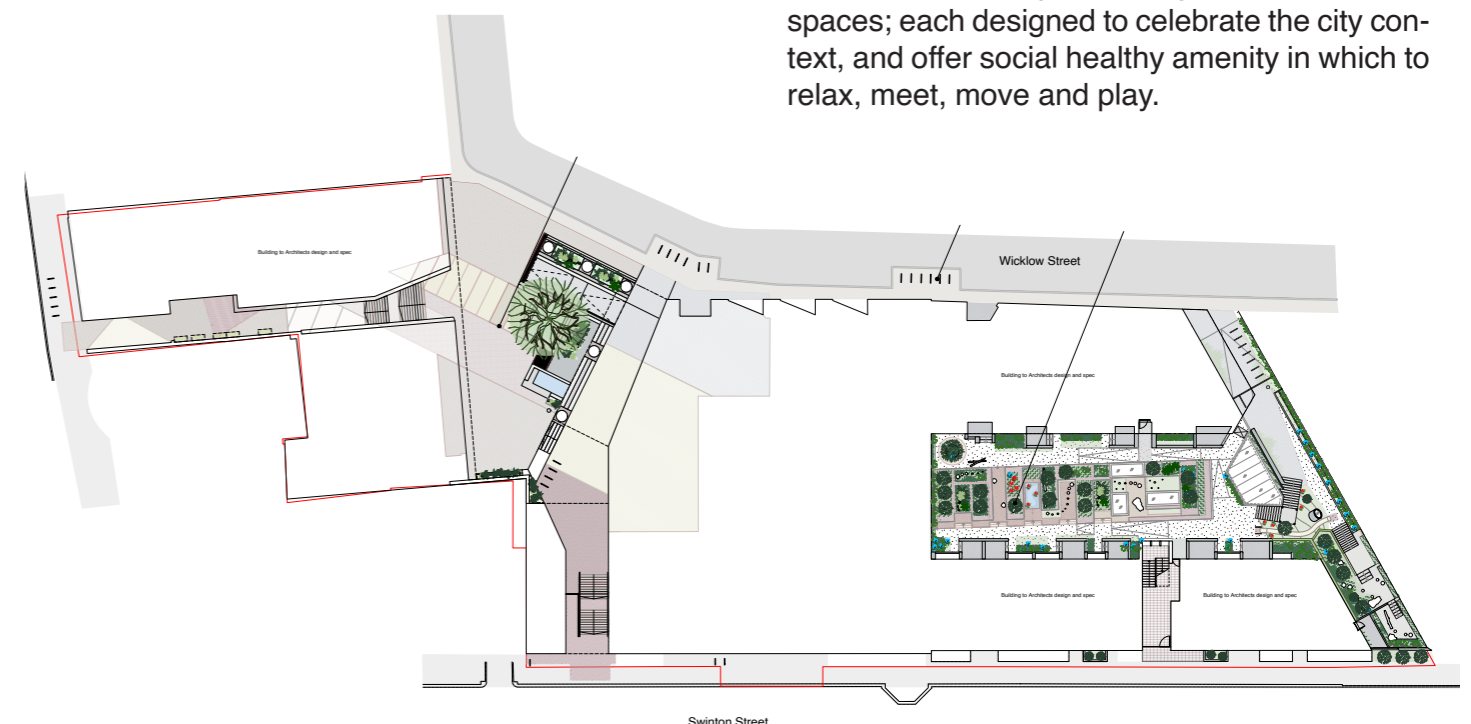
Celebrating street entrances and boundaries to be welcoming

Two key landscaped areas; a new courtyard and garden, are provided as part of the new development, each of which work hard to provide capacity, amenity, legibility pleasure and play for the new development and for the surrounding city context.

The courtyard is a public space that engages directly with Wicklow Street and allows a public route through to Swinton Street. The space gives access and amenity to each of the uses fronting on to the courtyard, and the identity of the space reflects and extends the historic character and rich identity of the surrounding and new urban grain.

The residential garden is a space dedicated to the residents of the new housing and non-residential uses located around it. The space offers communal and private spaces, with tree planting and other planting that makes positive use of the varied heights of this landscape. The design of this space has been revised, replacing the straight stair of the original scheme with a cranked stair, integrated with a large roof lantern and external lift to provide inclusive access between levels. As before, the geometry and feel of the garden is designed to evoke the informal and rich geometry of the railway cutting, adjoining yards, buildings and loose urban structure surrounding the site.

Both landscapes are green and urban spaces; each designed to celebrate the city context, and offer social healthy amenity in which to relax, meet, move and play.



Public Realm and landscape overview plan

### Landscape Masterplan



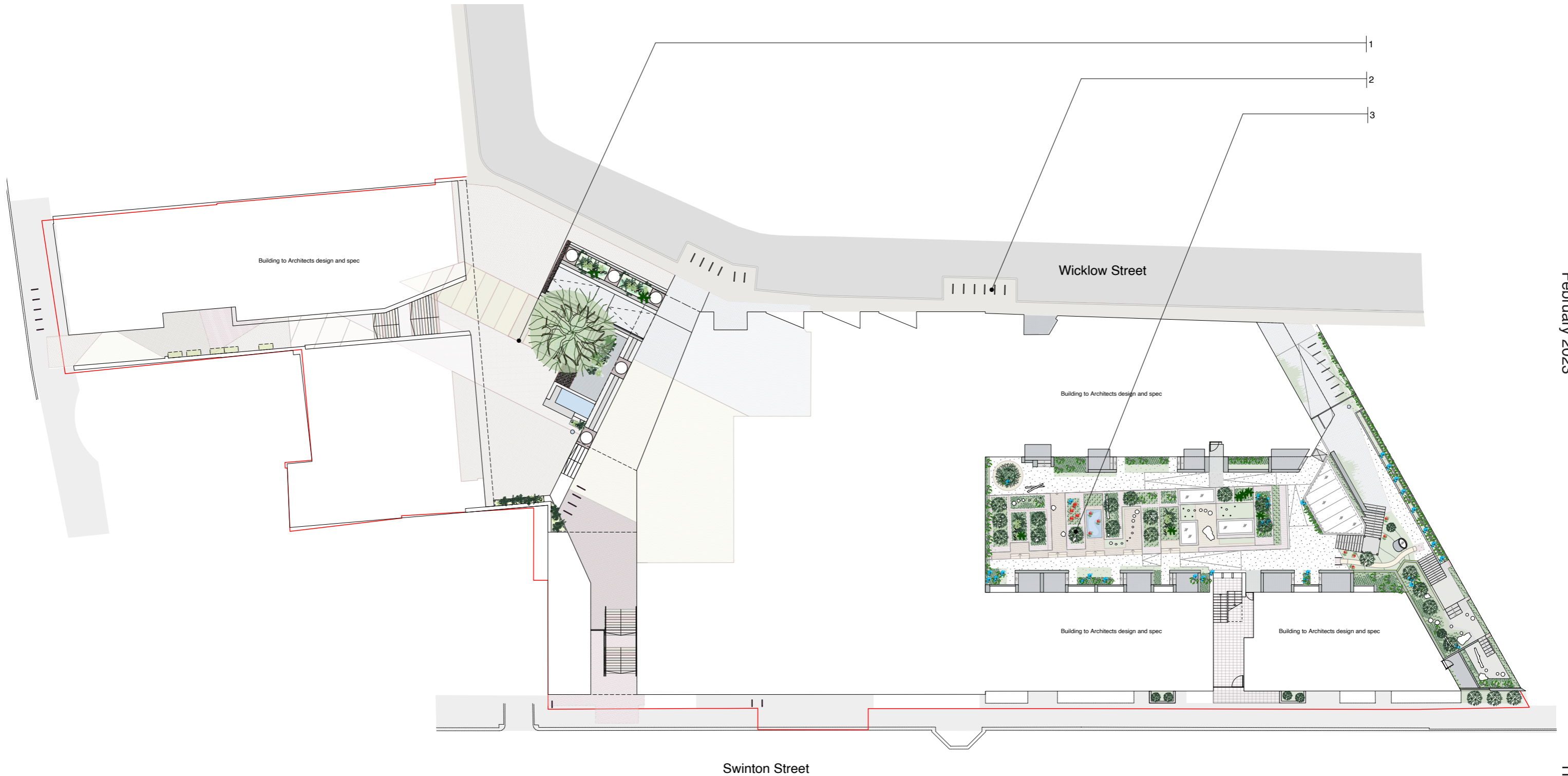
Red Line boundary

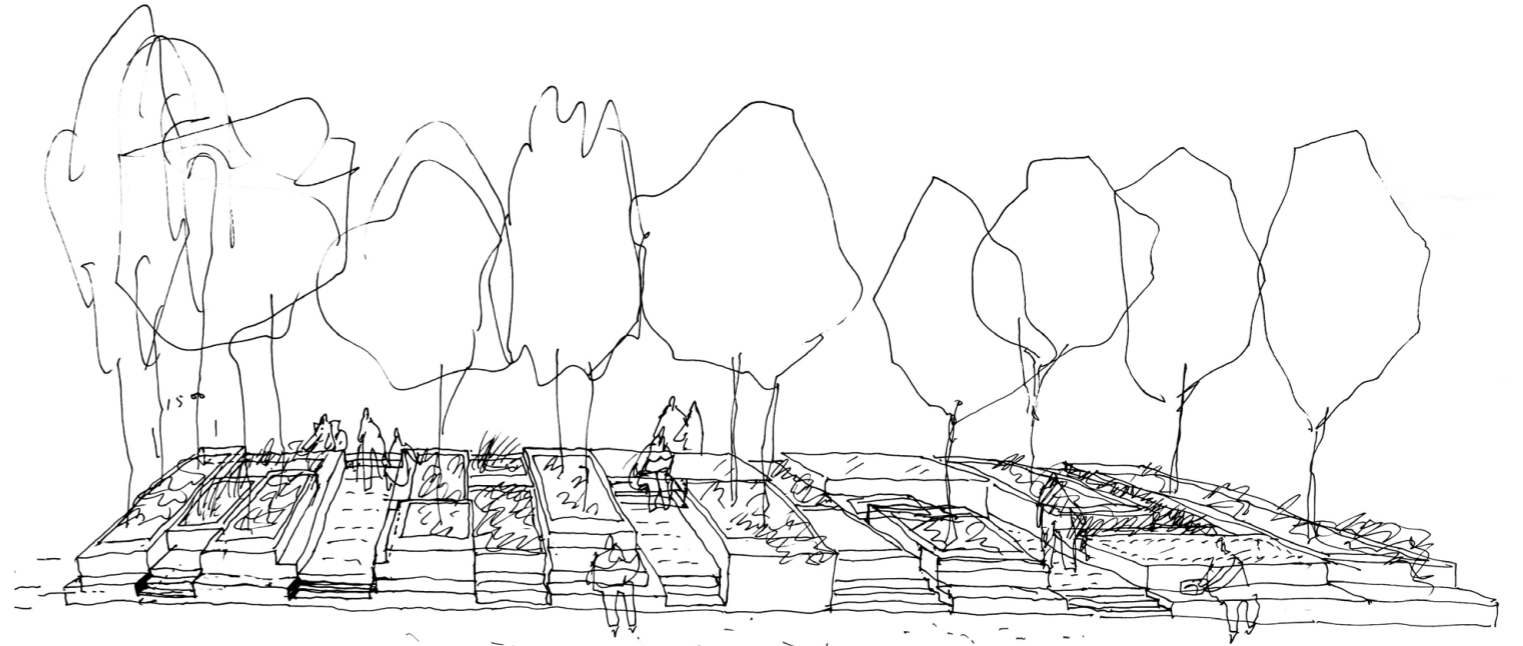
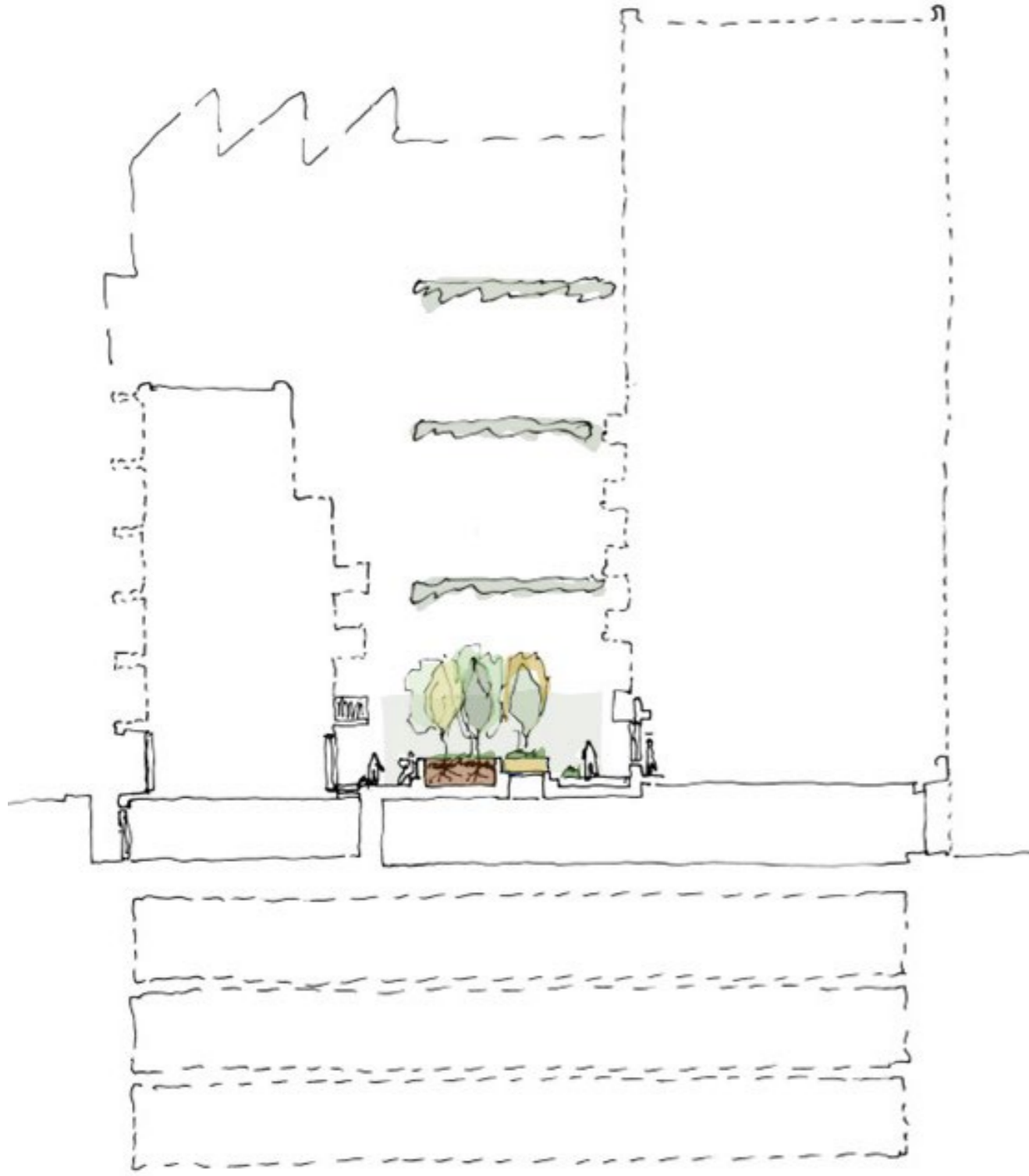
Note: Proposals outside the red line boundary are indicative only

1 : Wicklow Yard

2 : Cycling strategy - refer to pages 44-47

3 : Railway Garden

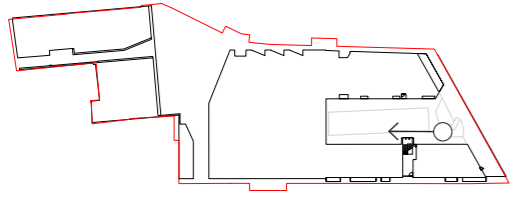




Sketch design development

— Central tree planting area becomes an articulated patchwork of interconnected tree pits in reclaimed, refurbished brick





— Planter edges are broken down with steps and ledges to provide informal seating and play

