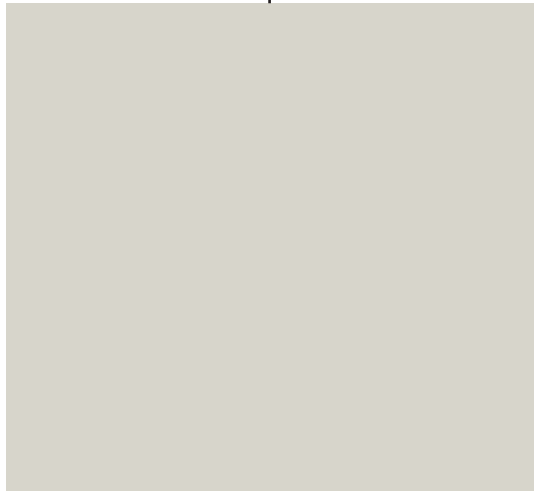


Project: The Warburg Institute  
Application ref: 2019/2819/P  
Decision date: 28/02/2023



Steel balustrade:  
Polyester powdercoated steel,  
RAL 9002.



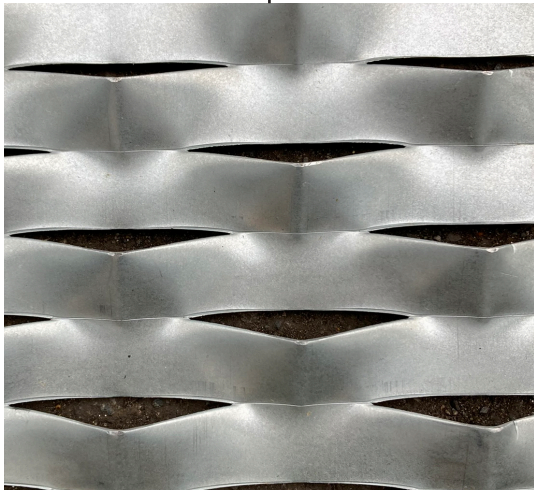
Brickwork:  
Petersen Tegl D91, english garden  
wall bond, light grey semi recessed  
pointing.



Glazed windows/doors:  
Steel framed polyester powder coated  
finish, Matt 'stynthatec' XDLC012  
Graphite



Precast concrete banding:  
As sample



Expanded metal mesh plant screening:  
Cadisch MDA meshtec Ambasciata,  
mill finished aluminium.