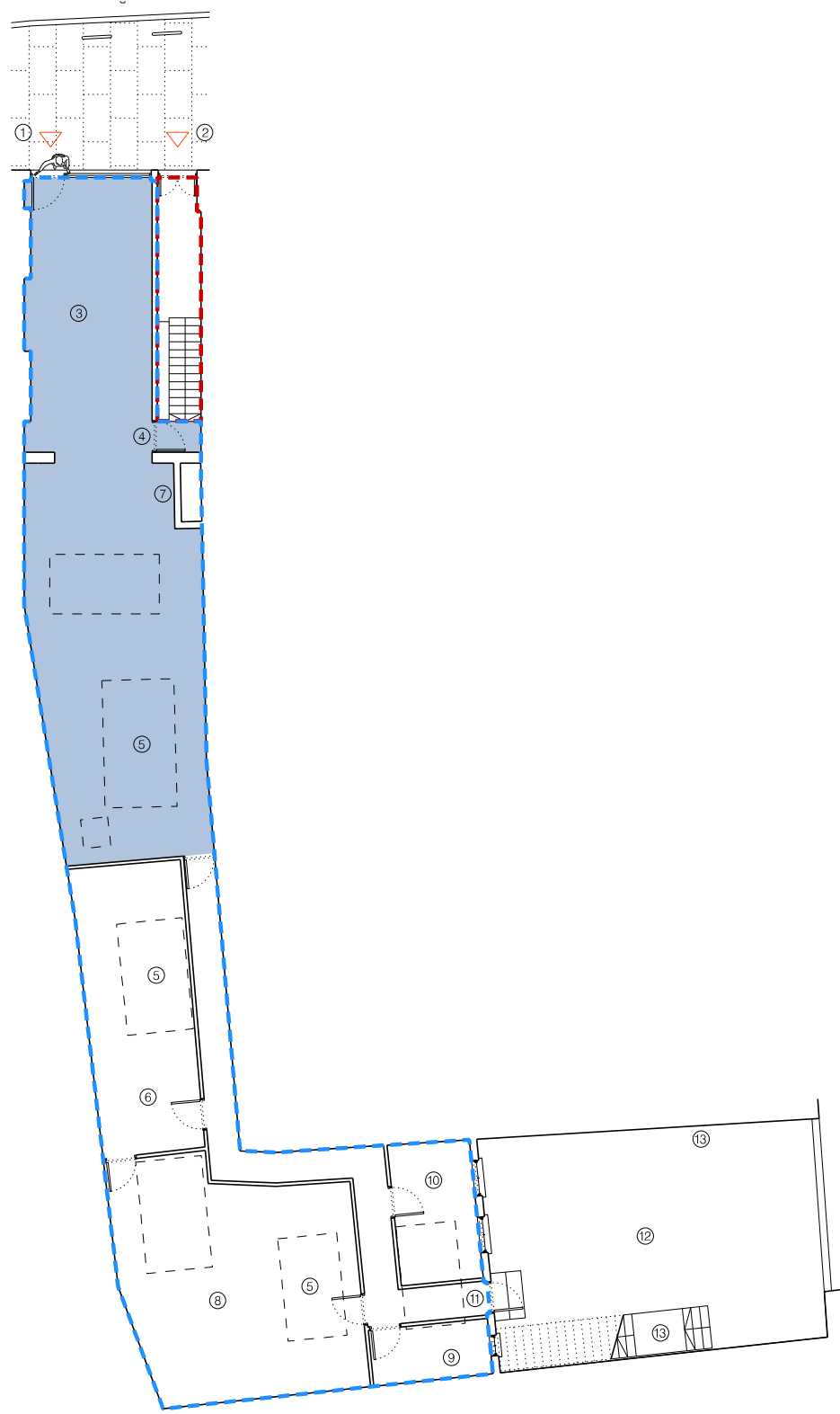


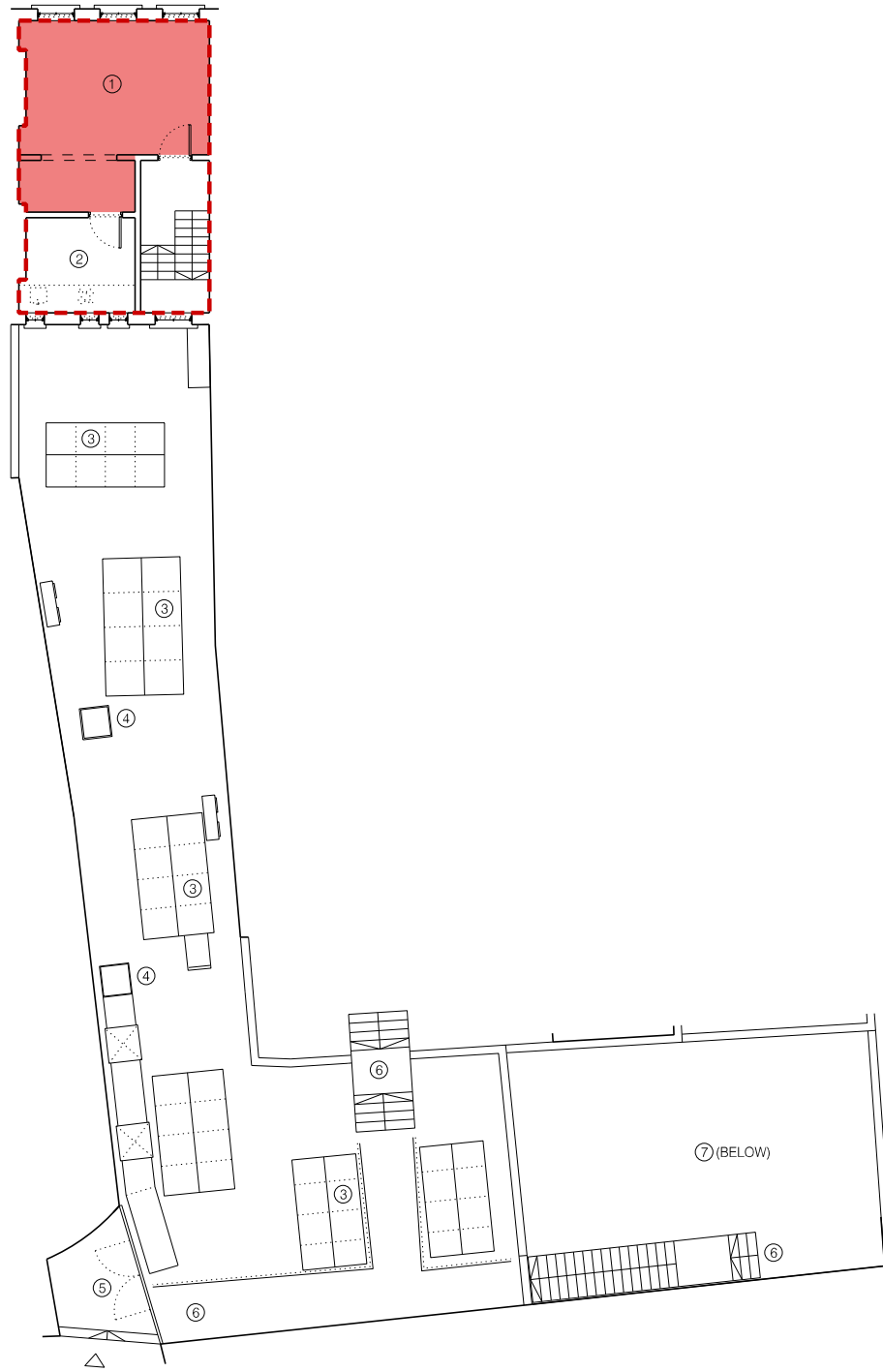
① BASEMENT PLAN

- NOTES:
- ① STORE
 - ② SERVICES



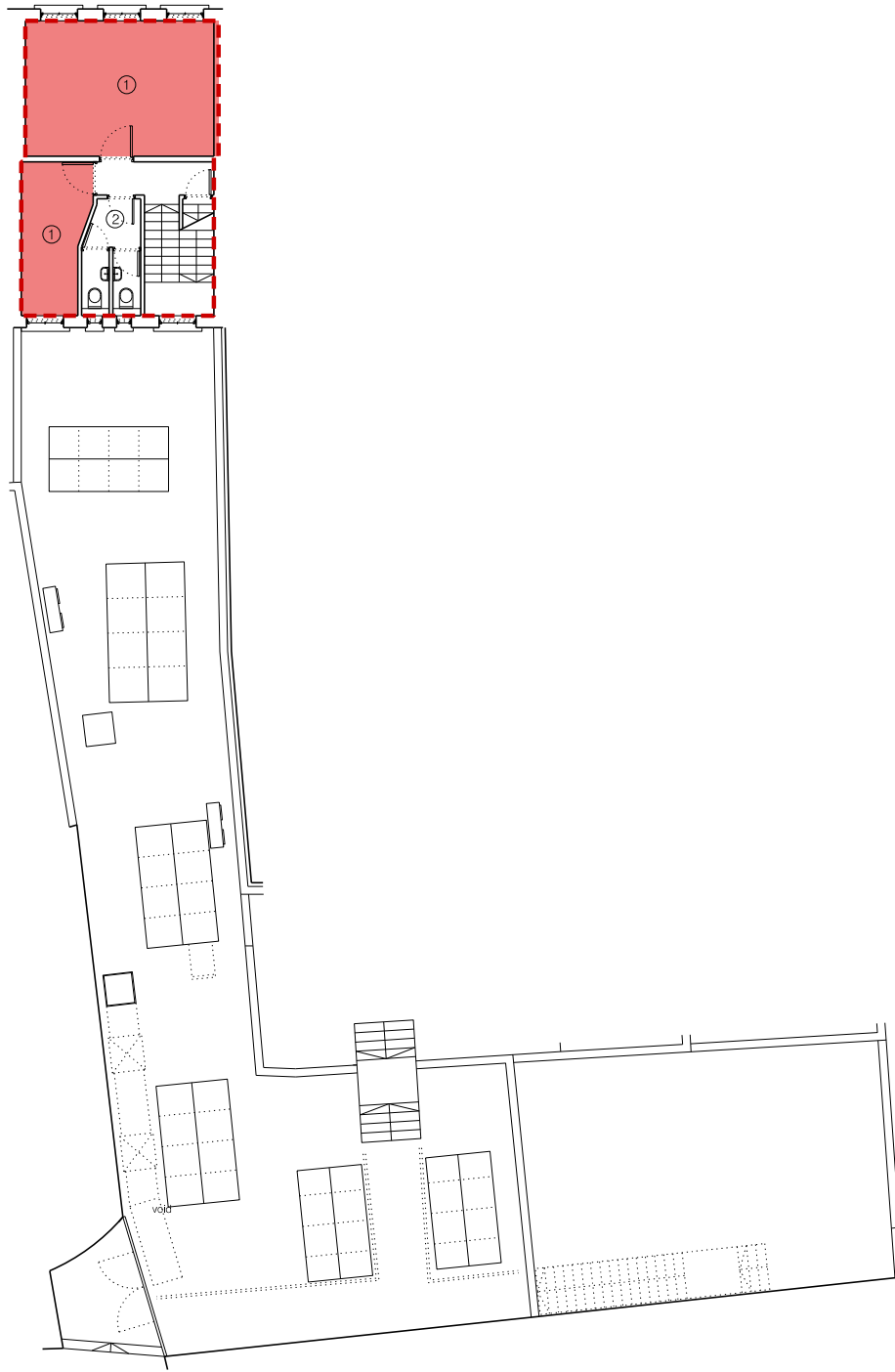
② GROUND FLOOR PLAN

- NOTES:
- ① PRIMARY ENTRANCE
 - ② OFFICE /FORMER RESIDENTIAL ENTRANCE
 - ③ BAR
 - ④ BASEMENT STAIRS
 - ⑤ ROOF LANTERNS ABOVE
 - ⑥ KITCHEN
 - ⑦ RISER
 - ⑧ KITCHEN STORE
 - ⑨ STORE
 - ⑩ WC'S
 - ⑪ ACCESS TO REAR YARD
 - ⑫ REAR YARD
 - ⑬ SECONDARY MEANS OF ESCAPE (JAZZ CAFE)



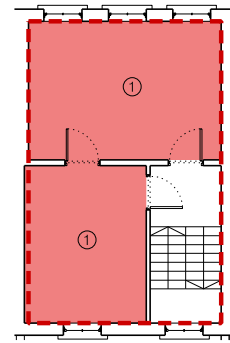
③ FIRST FLOOR PLAN

- NOTES:
- ① RECEPTION
 - ② KITCHEN
 - ③ ROOF LANTERN
 - ④ KITCHEN EXTRACT DUCT
 - ⑤ GATE TO STANMORE PLACE
 - ⑥ SECONDARY MEANS OF ESCAPE (JAZZ CAFE)
 - ⑦ REAR YARD (BELOW)



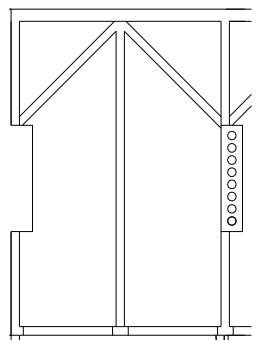
④ SECOND FLOOR PLAN

- NOTES:
- ① OFFICE
 - ② WC'S



⑤ THIRD FLOOR PLAN

- NOTES:
- ① OFFICE



⑥ ROOF PLAN

KEY			
	E(c) OFFICE GIA		E(c) OFFICE NIA
	E(b) COMMERCIAL GIA		E(b) COMMERCIAL NIA
	C1 APARTMENT HOTEL GIA		C1 APARTMENT HOTEL NIA

REVISION:	PURPOSE:	DATE:	Notes:	Purpose of Issue:	CLIENT:	PROJECT:	DWG TITLE:	REVISION:	DATE:	SCALE:
D	Issued for planning application	23.02.2023	1. Contractors are not to directly scale off this drawing. Dimensions should be obtained from the Engineer or Architect, site checked and any discrepancy between drawings reported. 2. The design and these drawings are the sole copyright of Amin Taha Architects, 15 Clerkenwell Close, London EC1R 0AA, T: 020 7253 9444 F: 020 7253 9555.	I=Information, C=Comment, P=Planning, T=Tender, S=Construction	Arcabas Ltd	9 PARKWAY	EXISTING USE – PLAN MATRIX	D	FEB 23	@ A1 1:200 @ A3 1:400
								DWG No: 274 – 110	PURPOSE OF ISSUE: P	DB: AC CB: AT