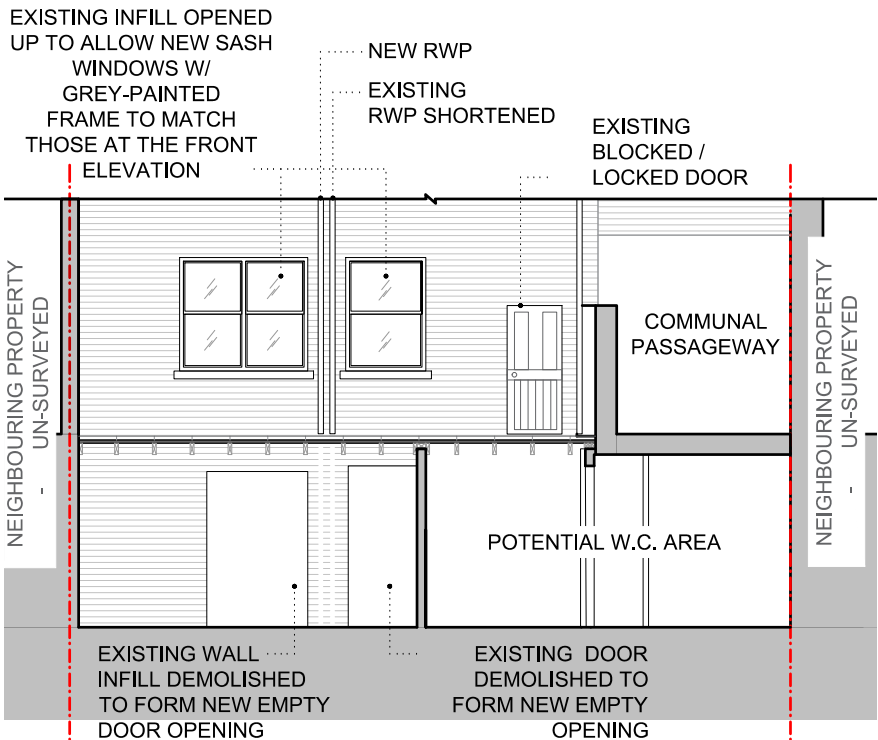


PROPOSED PARTIAL FRONT ELEVATION
1:100 @ A3



PROPOSED PARTIAL REAR ELEVATION
1:100 @ A3

Do not scale off this drawing.
All areas and dimensions are approximate and subject to site survey.

B	21.02.2023	Substitution of front light-well, with preference instead for concrete paving lights as requested by camden council and Camden CAAC.
A	15.12.2022	Substitution of front light-well, with preference instead for paving lights and omission of cast iron railing to front. Re-design of shop front at request of Camden CAAC.
rev.	rev. date	rev. description

tasou
associates

PLANNING
DRAWING NOT FOR CONSTRUCTION, TO BE
USED FOR PLANNING PURPOSES ONLY
architects + structural engineers

4 Amwell Street, London. EC1R 1UG T:020 7713 7070 F:020 7713 7071 E:tasou@tasou.co.uk		
project 84 MARCHMONT STREET LONDON WC1N 1AG		
dwg title PROPOSED PARTIAL FRONT & REAR ELEVATIONS		
date FEB 2023	dwg no. PR.03	rev. B
scale @ A3 1:100 @ A3	job no. 1838	

