

# 60-86 Royal College Street

**Doc NO.: RCS-BDP-XX-00-RP-L-935901**

**Rev: P03**

**Date: 20/02/23**

Planting Report - Planning Condition Issue

**BDP**



# Royal College Street London

## Green Façade

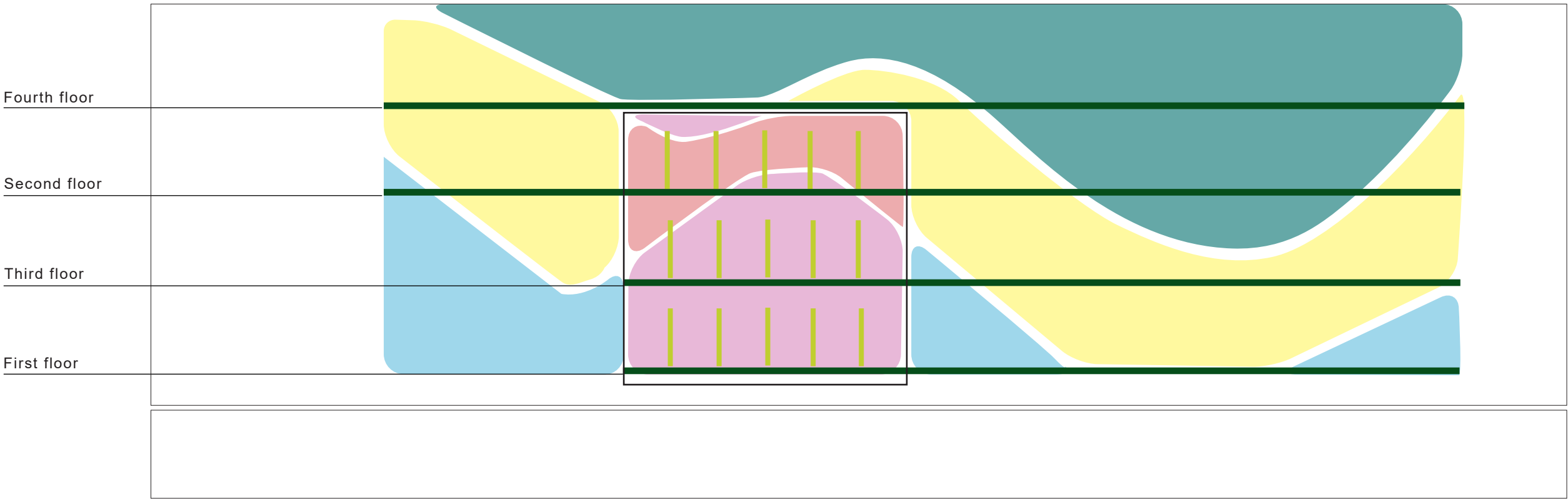
### Key character of green facade planting selection:

- Low maintenance species selected
- Sun tolerant plants
- Plants generally disease free and no toxic
- Evergreen planting
- Low spread species
- Organic curvilinear planting design that add the appearance of dynamic movement to the building
- Accent colours plants on the focal point of the Façade

### Key

- Green ledges with planting
- Focal point of the Façade
- Conceptual dinamic movement to the building
- Façade Focal Point Mix 1
- Façade Focal Point Mix 2
- Façade Planting Mix 3
- Façade Planting Mix 4
- Façade Planting Mix 5
- Green wall climbing

### Concept planting diagram:



### Maintenance Planting Annual Schedule:

Maintenance Operation	Jan	Feb	Mar	Apr	May	Jun	July	Aug	Sept	Oct	Nov	Dec
Bi-monthly visual and photographic inspection of the planters	●		●		●		●		●		●	
Full access visit to prune/ tidy/ replace background planting as necessary				●		●			●			
For maintenance of the Irrigation system, associated components and potential nutrient tank please refer to the irrigation performance specification												

### Green wall climbing:



Trachelospermum jasminoides

### Planting Ledges Mixes

#### Façade Focal Point Mix 1



Heuchera 'Fire Chief'



Lonicera nitida Maygreen

#### Façade Focal Point Mix 2



Heuchera Plum Pudding



Euonymus fortunei radicans

#### Façade Planting Mix 3



Euonymus fortunei 'Emerald 'n' Gold'

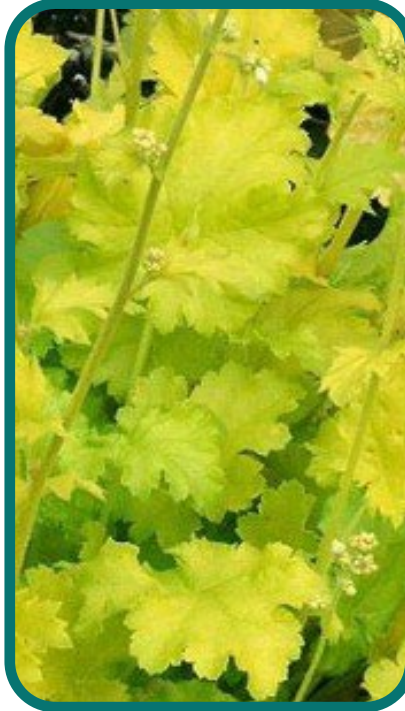


Stachis bizantina



Carex morrowii variegata

#### Façade Planting Mix 4



Heuchera 'Lime Rickey'



Geranium 'Rozanne'



Primula vulgaris

#### Façade Planting Mix 5



Epimedium pinnatum



Carex morrowii variegata



# Royal College Street London

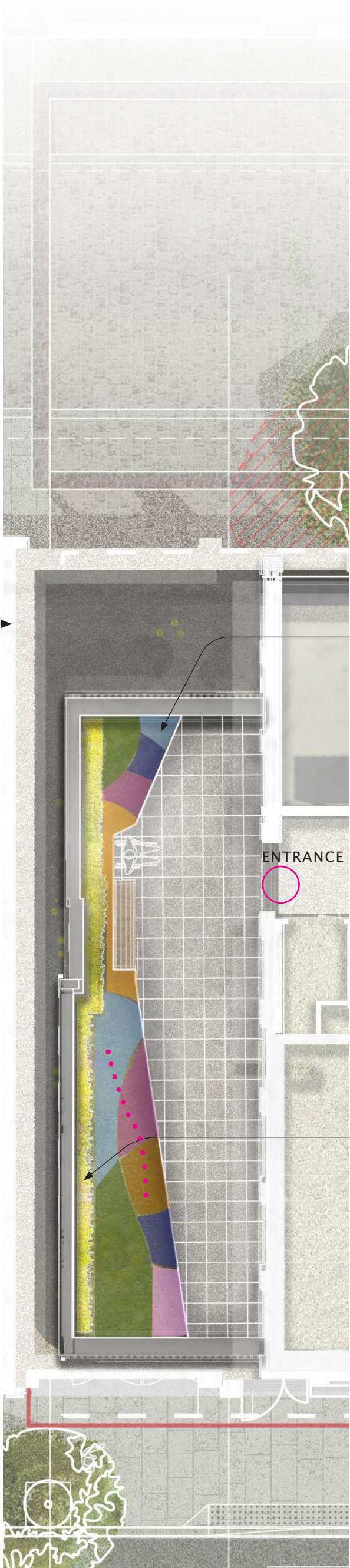
## 3rd Floor Terrace



Location plan

### Maintenance Planting Annual Schedule:

Maintenance Operation for all species	Jan	Feb	Mar	Apr	May	Jun	July	Aug	Sept	Oct	Nov	Dec
Monitor and water to the correct levels before the growing season		●	●									
Weeding and remove of dead plant material			●	●	●	●	●					
Top dressed/replenished soil												●
Spring-flowering planting group:	Jan	Feb	Mar	Apr	May	Jun	July	Aug	Sept	Oct	Nov	Dec
Prune immediately after the flowers have faded						●						
Shorten the stems which have carried flowers						●						
Most evergreens are best left unpruned, so limit it to periodic thinning is fine. This should be undertaken when dry to avoid fungal disease.				●	●							
Summer-flowering planting group:	Jan	Feb	Mar	Apr	May	Jun	July	Aug	Sept	Oct	Nov	Dec
Prune just before new growth commences			●									
Cut back older shoots that carry little in the way of new growth to encourage stronger growth			●									
Most evergreens are best left unpruned, so limit it to periodic thinning is fine. This should be undertaken when dry to avoid fungal disease.									●			
Climber planting group:	Jan	Feb	Mar	Apr	May	Jun	July	Aug	Sept	Oct	Nov	Dec
Trimming may be required to keep them to the space available, removing as much from the longer shoots as necessary.			●									



### Sensory planting



Liriope muscari



Carex morrowii



Pachisandra terminalis



Heucherella 'Golden Zebra'



Epimedium pinnatum subs. colchicum



Asplenium scolopendrium

### Edging and screening



Calamagrostis x acutiflora 'Karl Foerster'

### Bulbs

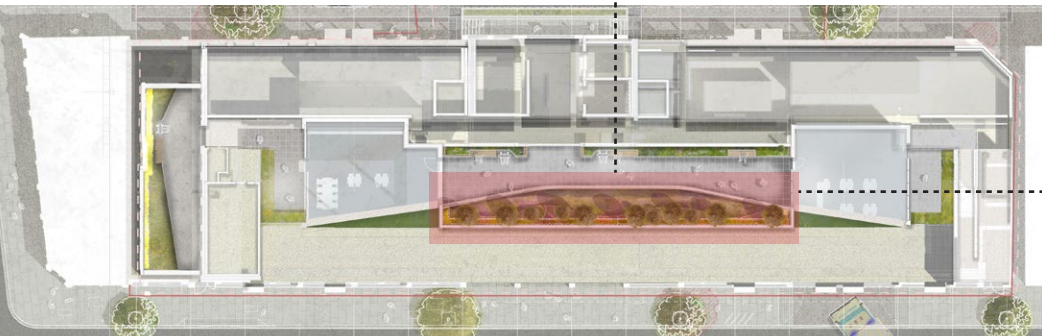


Narcissus 'Tete a Tete'



# Royal College Street London

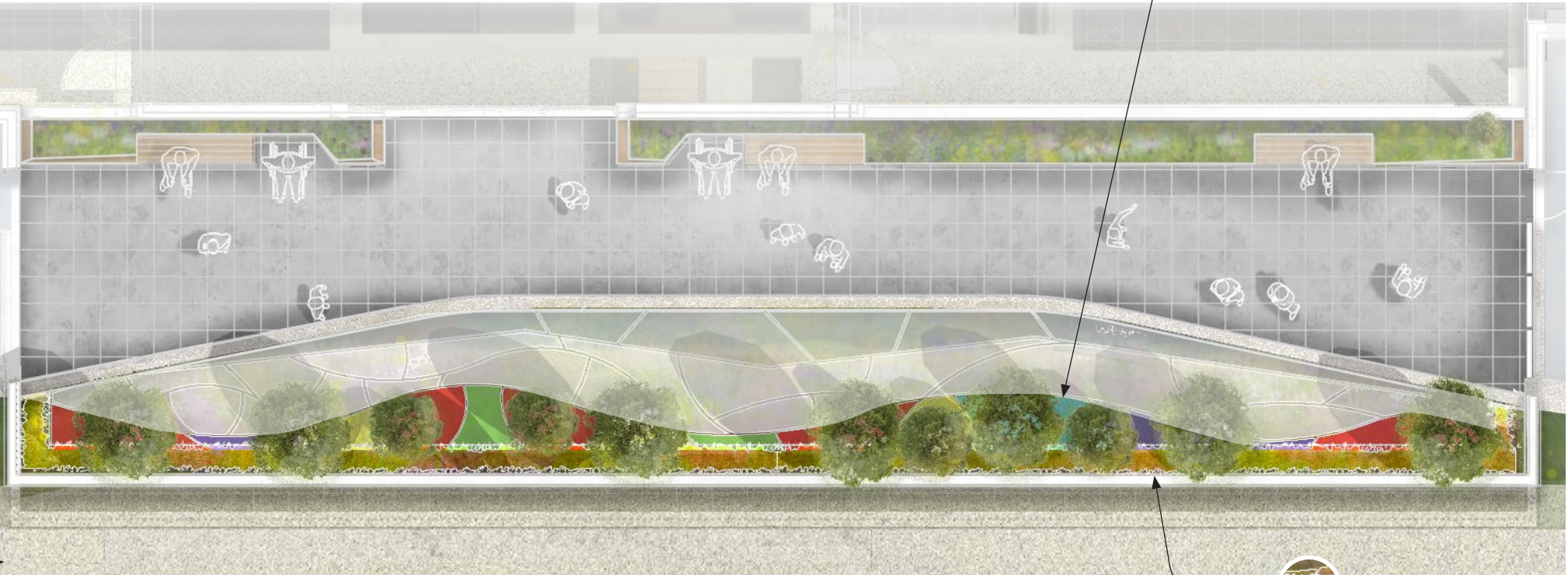
## Pavillion terrace



Location plan



Multistem trees



### Evergreen and semi- evergreen planting shade tolerant



Agastache 'Blackadder'



Pennisetum alopecuroides



Carex morrowii 'Ice Dance'



Sarcococca confusa

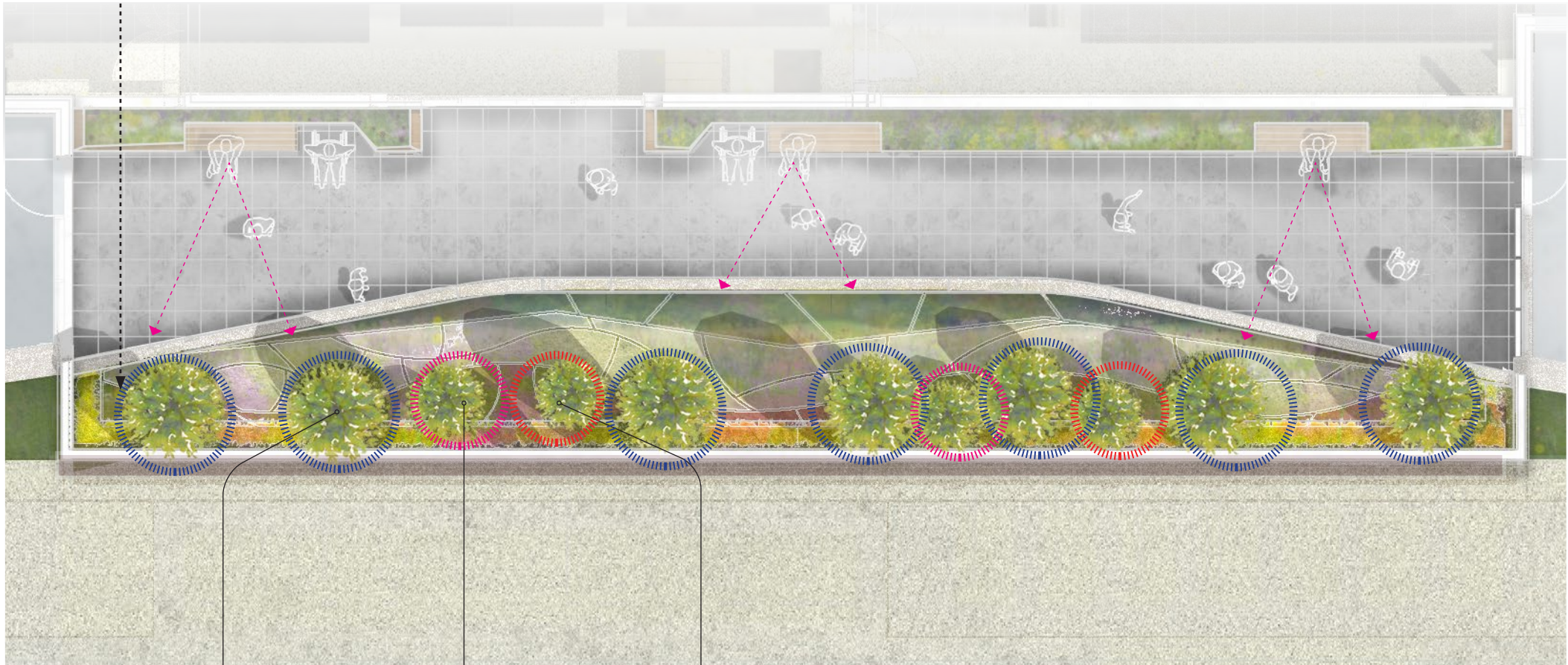


Pachysandra terminalis

### Hedging:

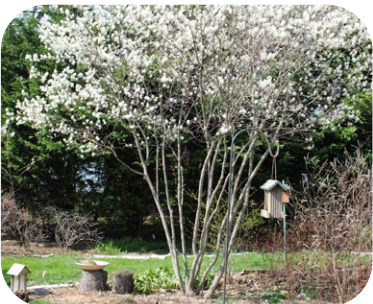


Calamagrostis x acutiflora 'Karl Foerster'



### Proposed multistem trees:

- Amelanchier alnifolia
- Rhus typhina
- Parrotia persica



Amelanchier alnifolia



Rhus typhina



Parrotia persica



# Royal College Street London

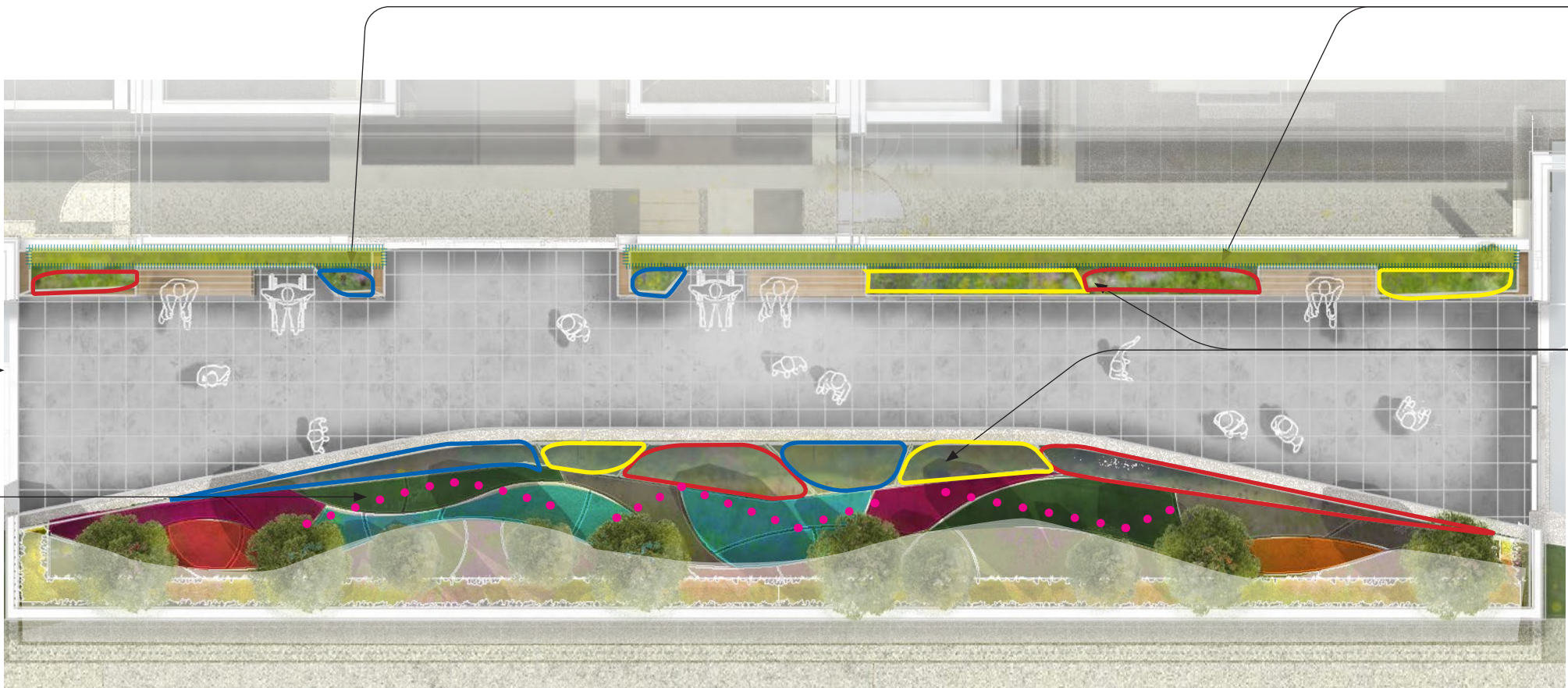
## Pavillion edge



Sensory planting



Location plan



Bulb planting mix



Allium sphaerocephalon



Allium caeruleum



Allium hollandicum 'Purple Sensation'

Pre grown Screen



Hedera helix 'Woerner'

Sensory planting/ sun tolerant/ low level

MIX 1



Stachis bizantina



Salvia jamensis 'Violette De Loire'



Salvia nemorosa Caradonna'

MIX 2



Heuchera 'Autumn Leaves'



Carex oshimensis Evergold

MIX 3



Lavandula stoechas



Allium 'His Excellency'

Sensory planting/ sun tolerant/ medium - tall

MIX A



Artemisia 'Powis Castle'



Geranium phaeum

MIX B



Stipa tenuissima



Aстранtia major 'Roma'



Knautia macedonica

MIX C



Pennisetum alopecuroides



Cirsium rivulare 'Atropurpureum'

MIX D



Panicum virgatum



Lavandula angustifolia

MIX E



Agastache 'Blackadder'



Carex morrowii



Monarda 'Scorpion'

MIX F



Acanthus spinosus

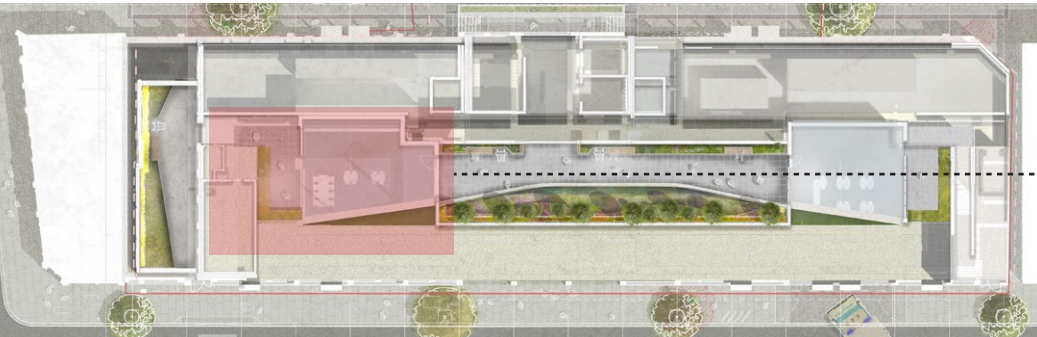


Baptisia australis



# Royal College Street London

Pavillion spaces: sensory plants shade tolerant



Location plan



## Wildflower meadow



### Shade tolerant planting



Liriope muscari



Sarcococca confusa



Anemone x hybrida 'Honorine Jobert'



Bergenia bressingham white



Hosta undulata



Carex morrowii 'Ice Dance'



### Planting meadow sun tolernat mix

(tot. area covered 12 m²):

Sedum & wildflower modular roof tiles supplied by grufekit or similar approved by clients/ landscape architects. To be installed as per supplier recommended by supplier. Tiles to be cut to suit areas as shown in drawings.



# Royal College Street London

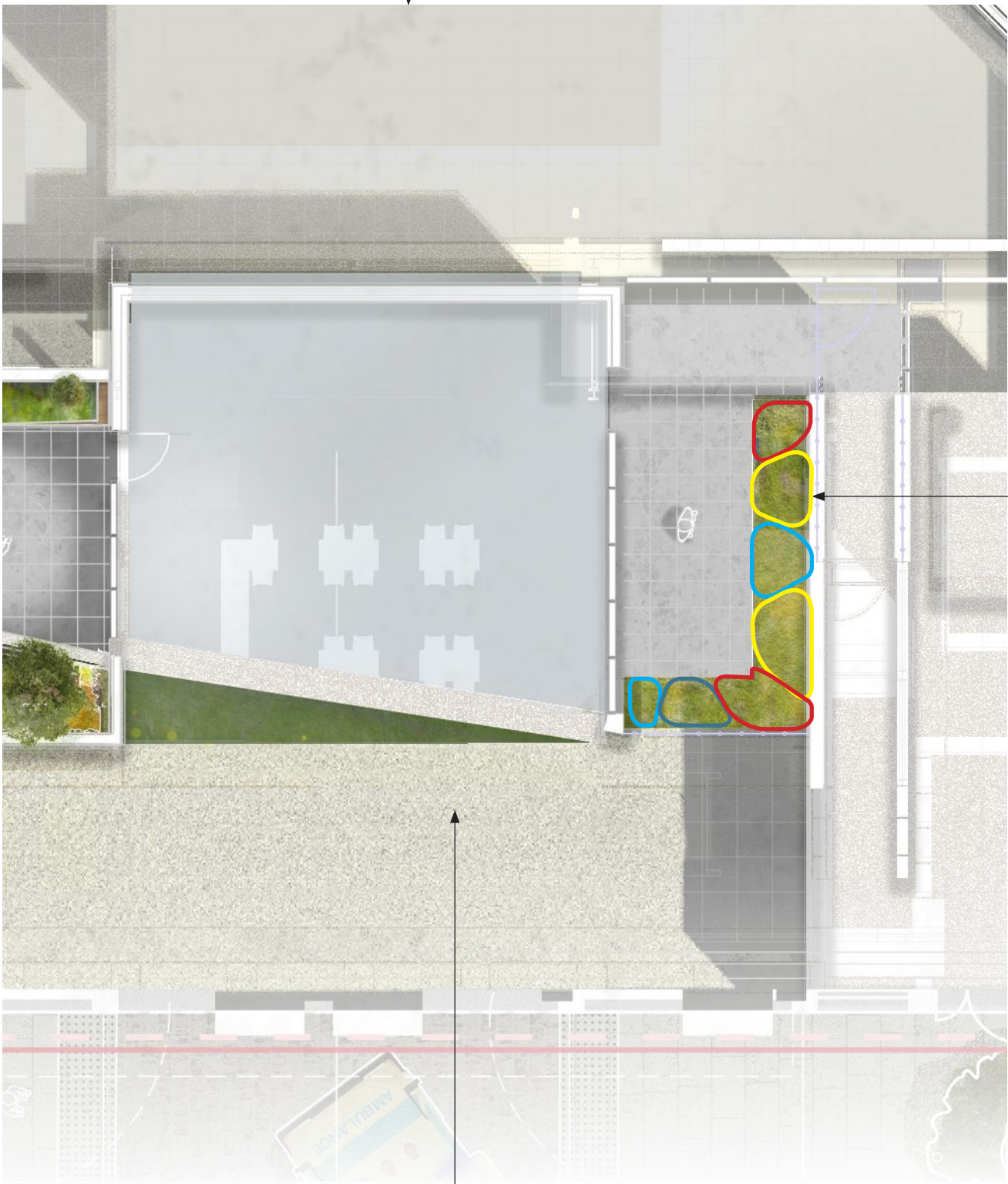
## Pavillion spaces



Location plan



### Wildflower meadow



### Sensory planting/ sun tolerant mix



Lavandula stoechas



Salvia x jamensis 'Violette De Loire'



Agastache 'Blackadder'



Pennisetum alopecuroides

### Planting meadow sun tolernat mix

(tot. area covered 12 m²):  
Sedum & wildflower modular roof tiles supplied by grufekit or similar approved by clients/ landscape architects. To be installed as per supplier recommended by supplier. Tiles to be cut to suit areas as shown in drawings.



# Royal College Street London

Illustrative visualisation of the pavillion garden

