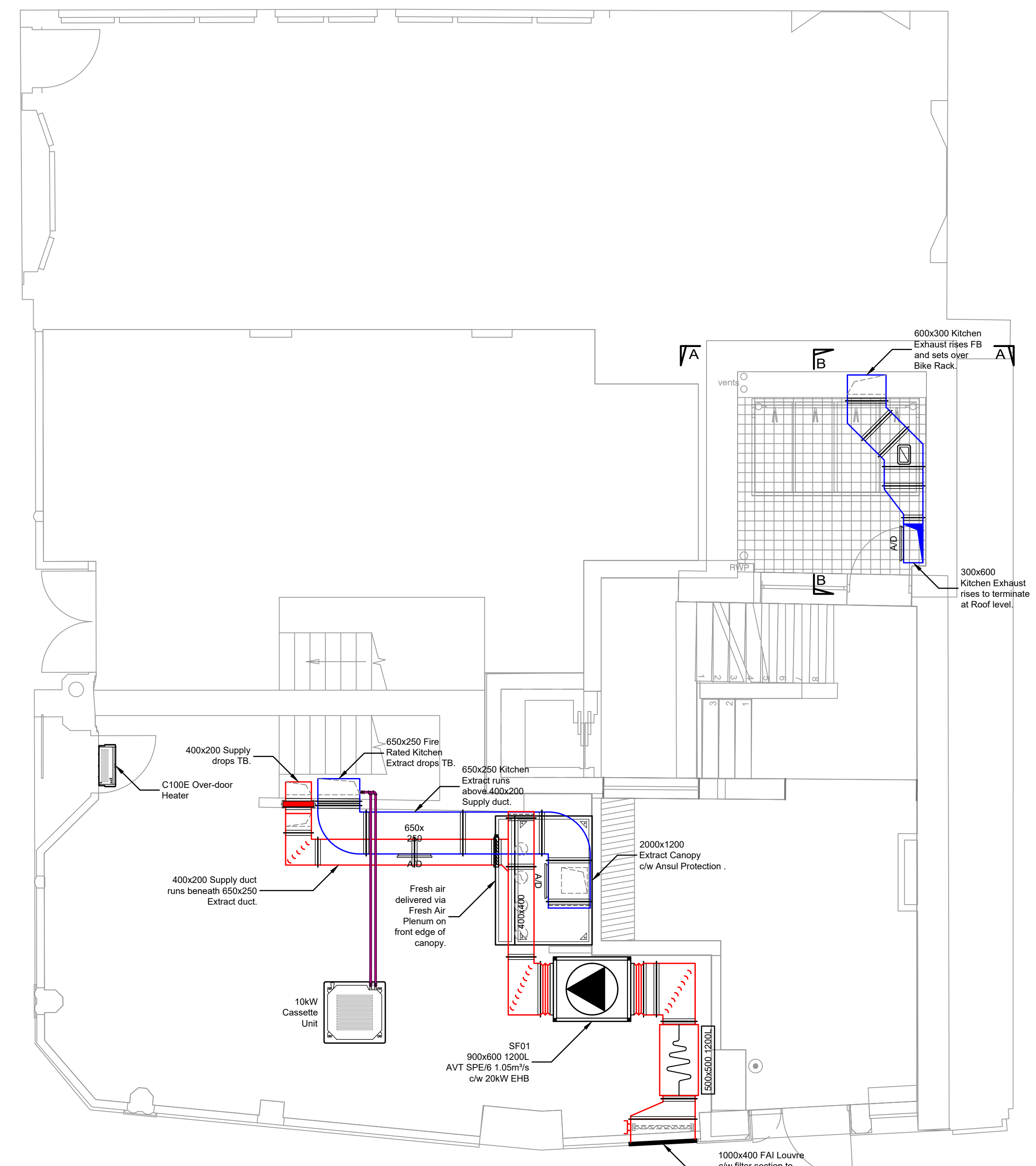
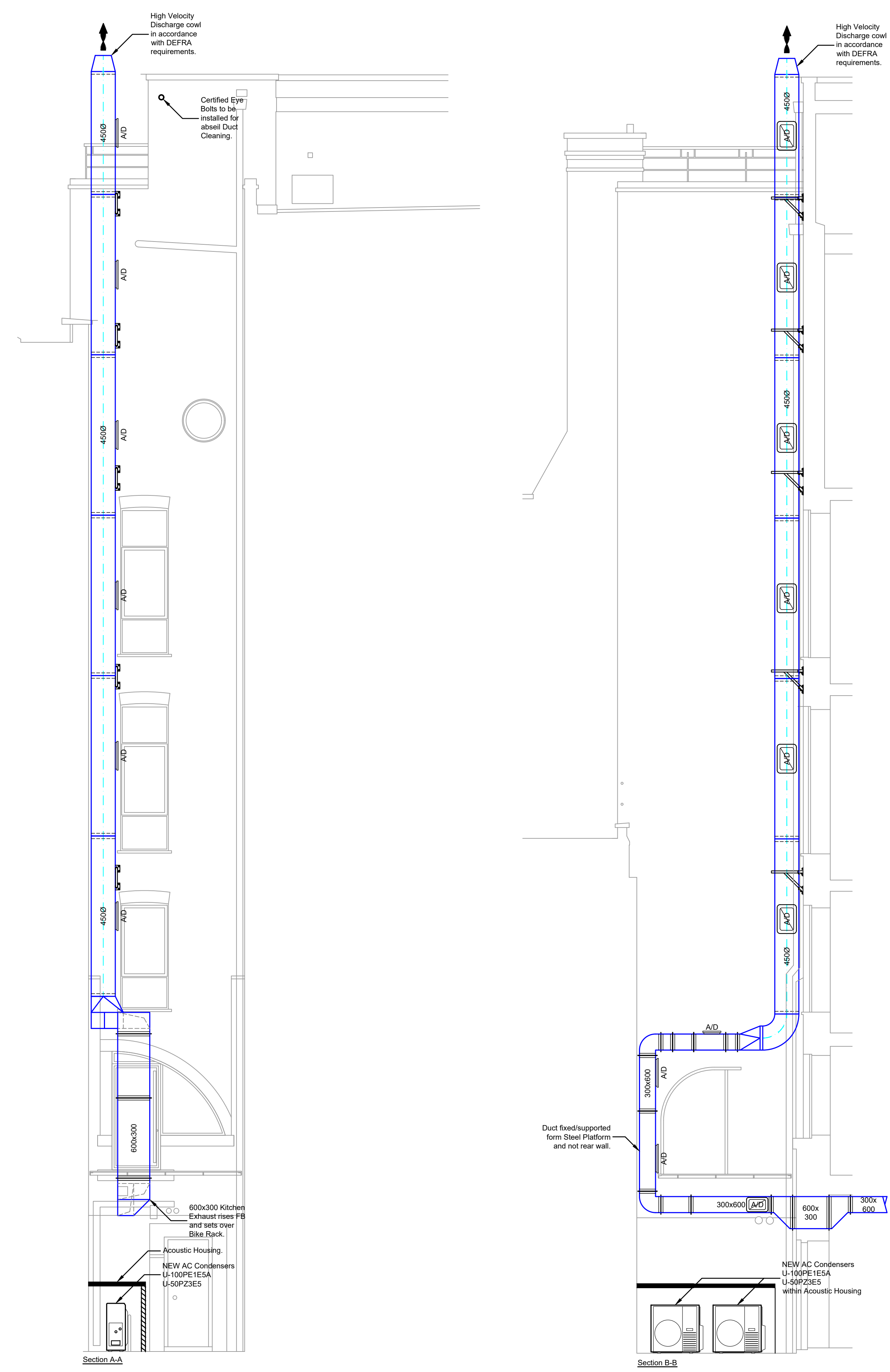


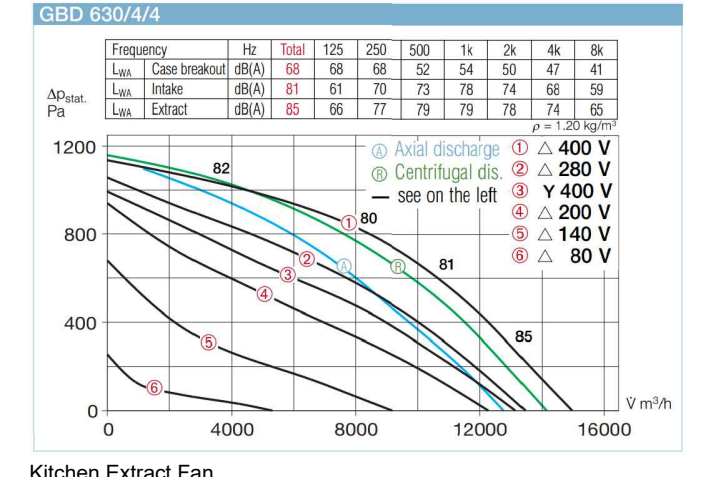
Basement Plan



Ground Floor Plan

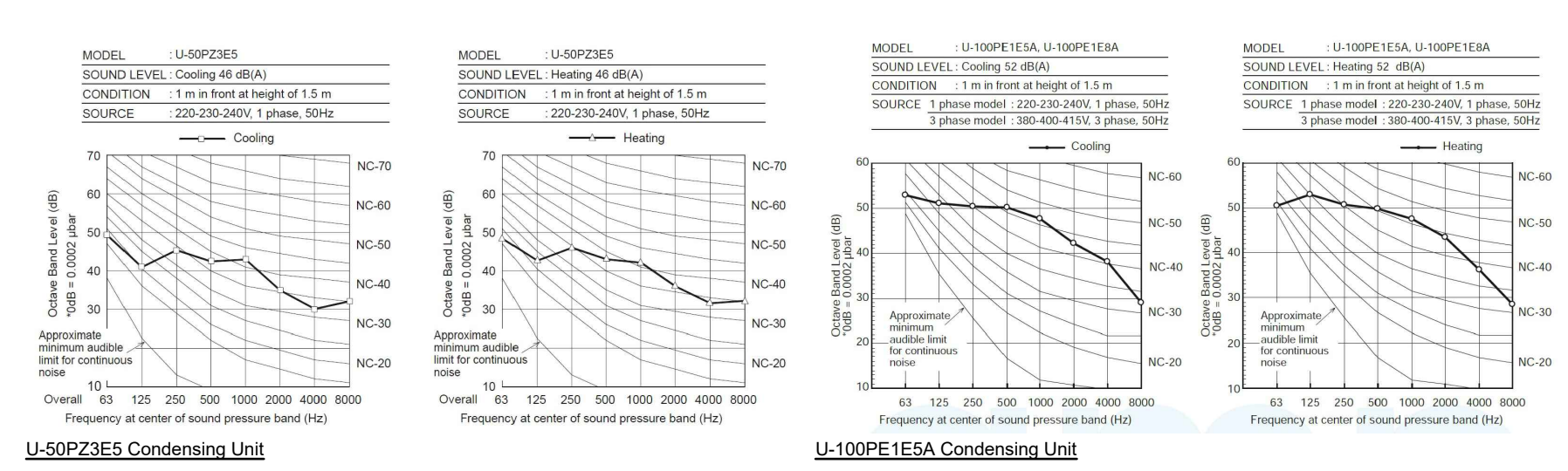


EQUIPMENT SOUND DATA

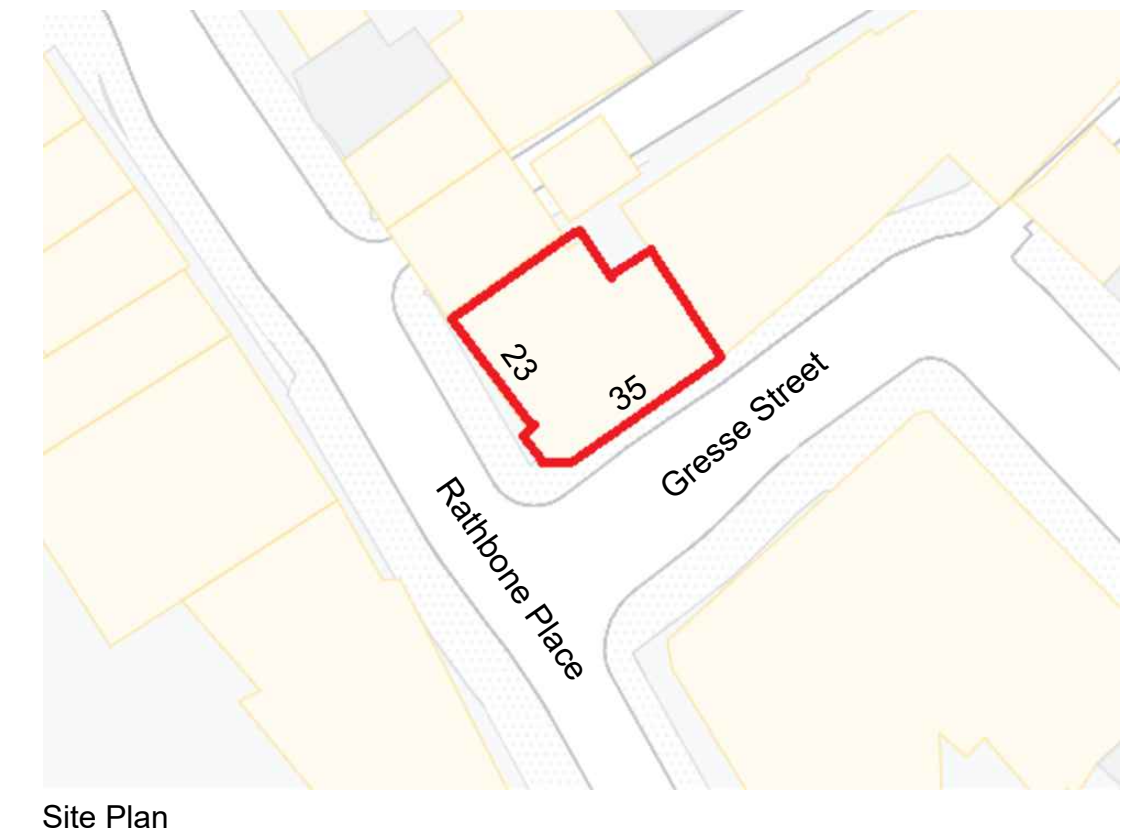
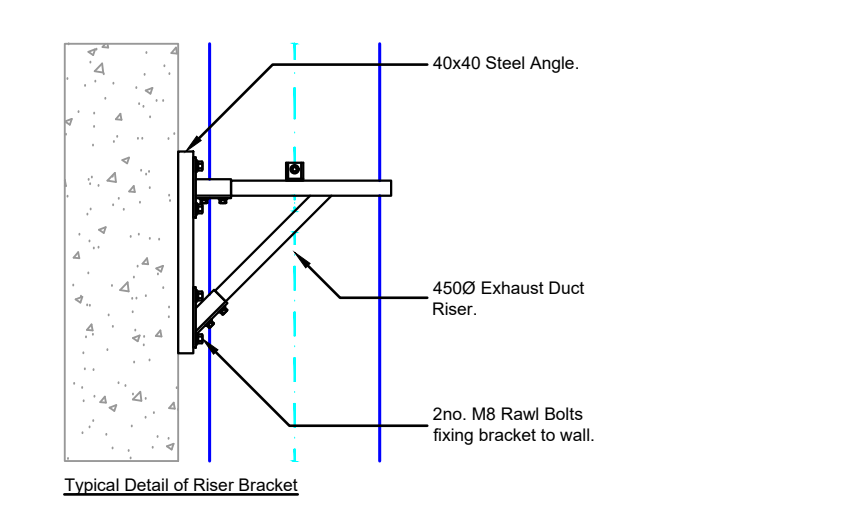


Fan Outlet Sound Levels

Model	Sound Power Level dB(A) at 1m	Sound Power Levels dB					
		63	125	250	500	1000	2000
SPE/SNE1	33	68	70	71	71	68	64
SPE/SNE2	34	69	71	72	72	69	65
SPE/SNE3	38	73	75	77	76	73	69
SPE/SNE4	40	77	76	77	75	74	72
SPE/SNE5	41	77	77	78	76	75	73
SPE/SNE6	41	77	77	78	76	75	73
SPE/SNE7	39	76	78	76	78	74	72



Grease Street Elevation



Site Plan

- LEGEND:**
- VCD = Volume Control Damper
 - SBD = Single Blade Damper
 - CA = Canopy
 - AC = Fan Coil Unit
 - CU = Condenser Unit
 - AHU = Air Handling Unit
 - HRU = Heat Recovery Unit
 - EF = Extract Fan
 - SF = Supply Fan
 - SG = Supply Grille
 - EG = Extract Grille
 - LV = Louvre
 - FT = Filter
 - ODH = Over Door Heater
 - F.O = Flat Oval Duct with Heater Battery
 - ATT = Attenuator
 - AD = Access Door
 - FB = From Below
 - TA = To Above
 - TA = From Above
 - CTS = Cut To Suit On Site
 - TSSM = To Be Site Measured
- NOTES:**
- Kitchen Extract to have Access Doors within every 2m, except to floor where Access Doors will be installed where Maintenance Access is provided for example food steel platforms). Access doors will always be installed on the side face of ducts to prevent grease leakage/buildup.
 - Kitchen Extract will not have Fire Dampers or VCDs installed in Duct runs.
 - Rectangular Duct flanges are 20mm for Ducts less than 1000mm wide and 25mm for Ducts more than 1000mm wide.

Project: Tudor House 23 Rathbone Place/35 Grease Street London W1T 1QY

Revision: C

Date: 23/03/22 Scale: 1:50 @ A0

Drawn By: PM Checked By: DW

Discipline: PP01 Revision: C

SUMMIT DESIGN LTD.
Unit 3, The Courtyard, Moorfields, Farning Road, Bloomsbury, London WC1E 7JX, UK
Tel: 01203 556500
info@summitdesign.co.uk
www.summitdesign.co.uk