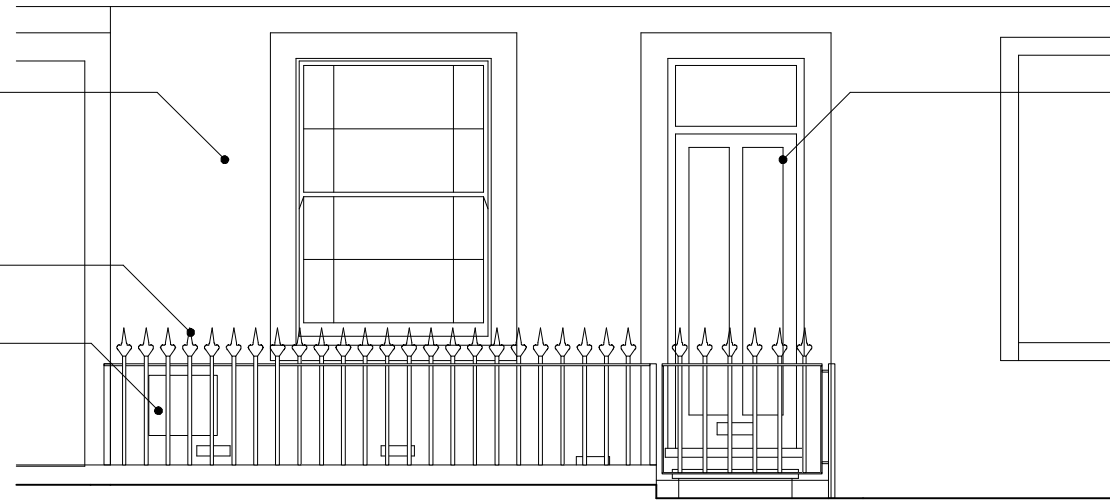


Existing sash windows upgraded to double glazing and glazing bars reintroduced as original design



New paint finish to front facade

New paint finish to front door

New low level York Stone wall, with new painted metal railings above
Gas meter relocated from inside. Contained within simple, tamper-proof box

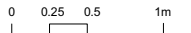


No. 6

No. 4

No. 2

KEY



P2 Gas meter added 22/02/2023

C · B · A
Clementine Blakemore Architects

157 Middleton Road - London E8 4LL
clem@clementineblakemore.com - 07580 193709

© Clementine Blakemore Architects

PROJECT NAME 4 Leverton Street London NW5 2PJ	PROJECT NO. 013
---	--------------------

TITLE
Proposed Front Elevation

RIBA STAGE 03	Planning
------------------	----------

DRAWN BY PF	CHECKED BY CB	SCALE @ A3 1:50
----------------	------------------	--------------------

DATE 04.02.2023	DRAWING NO. 200	REVISION NO. P2
--------------------	--------------------	--------------------