

Tree Constraints Plan

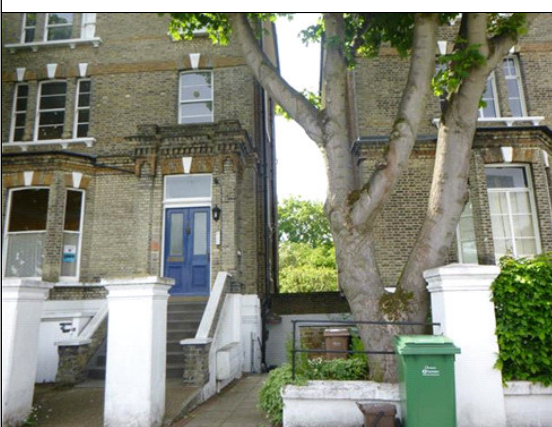


Photo 1



Photo 2



Photo 3



Photo 4



Photo 5



Photo 6

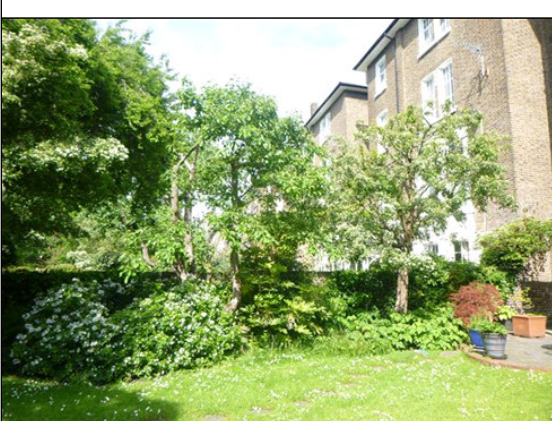


Photo 7

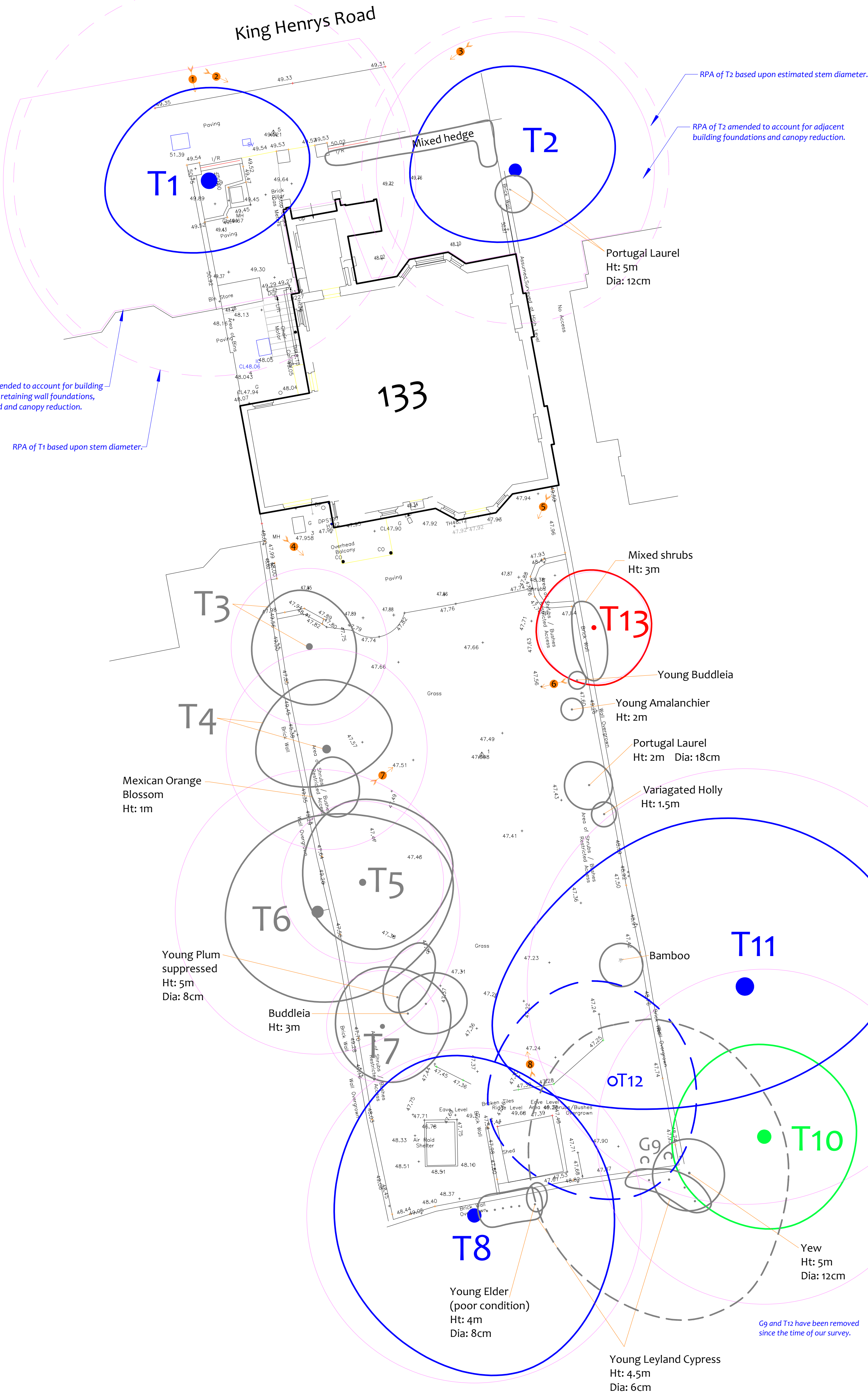


Photo 8



Photo 9

See the accompanying report for more photographs



Drawing No:	CCL 10812 / TCP Rev: 2
Title:	Tree Constraints Plan (Existing Layout)
Site:	133 King Henrys Road, London, NW3 3RD
Scale:	0 5 1:100
Paper Size:	A1

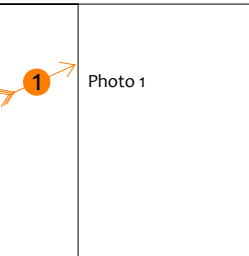


Tree Retention Categories	
Category	Stems & canopies shown
Category A tree	
Category B tree	
Category C tree	
Category U tree	

	Trees of high quality with an estimated life expectancy of 40+ years. Usually large trees with significant presence or smaller trees with excellent form. Retention of these trees is highly desirable.
	Trees of moderate quality with a life expectancy of 20+ years. Usually maturing trees, or younger trees with good form. Retention of these trees is desirable though less than Category A trees.
	Unremarkable trees of low quality and merit. Individual specimens are not considered to be a material planning consideration.
	Trees unsuitable for retention due to their very poor condition.

Tree Constraints Plan  
Existing Layout

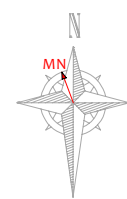
	B5 5837 Root Protection Area (radius = 12xstem diameter)
	Root Protection Area needing amendment due to site conditions, e.g. presence of existing road or building.
	Root Protection Area having been amended to account for site conditions
T1 = Tree No 1	G2 = Group No 2 H3 = Hedge No 3



**MN** = Measured North:  
Canopy spreads are sometimes measured to an approximate N defined by site features. Often more accurate, especially where rows of trees are not aligned N-S or E-W.

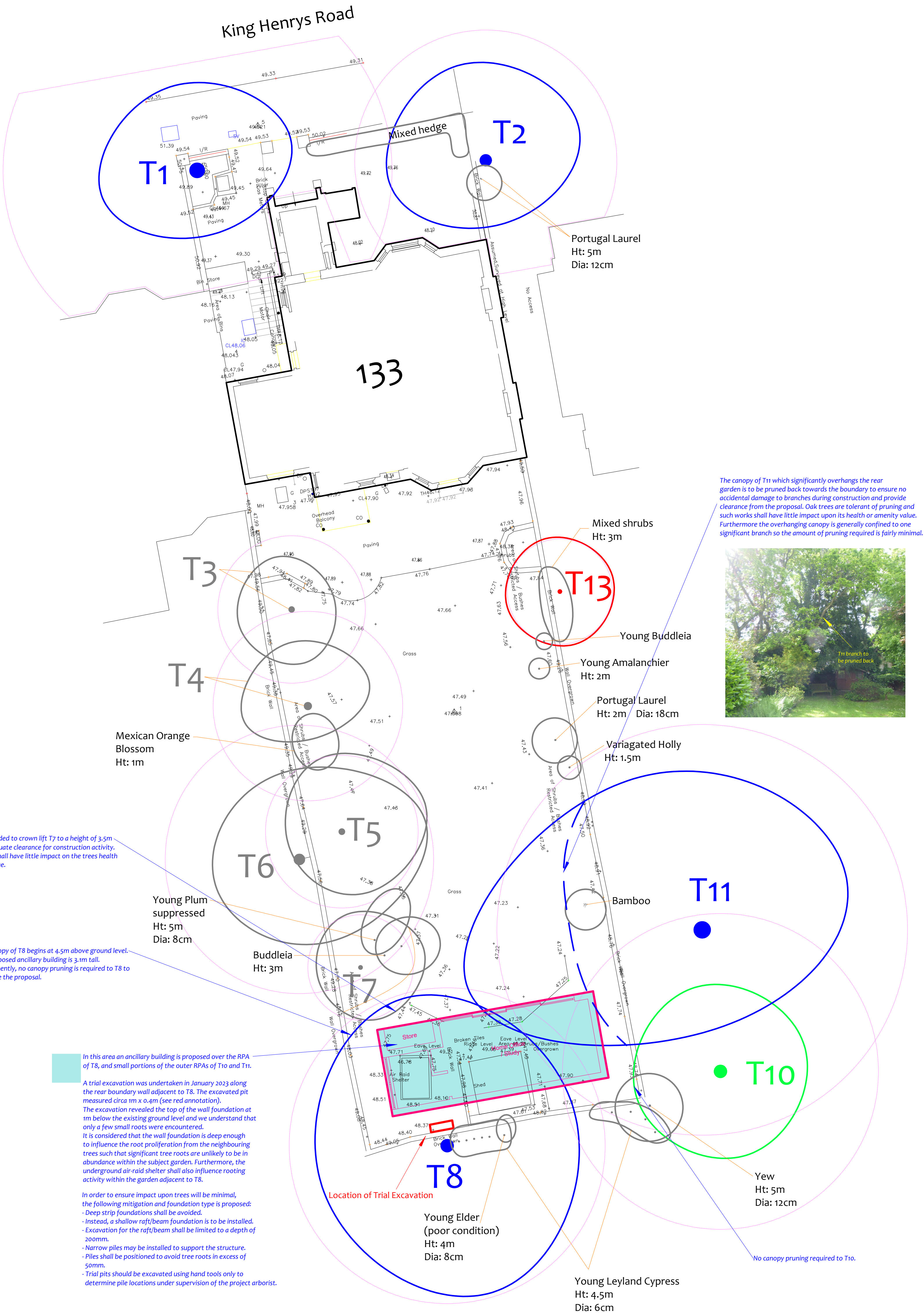
Tree Ref.	Species	Height (m)		Root Protection Area	
		Height (m)	Radius (m)	m <sup>2</sup>	Square (m)
T1	Sycamore	11	8.4	222	14.9
T2	Horse Chestnut	12	6.6	137	11.7
T3	Hawthorn	5.5	3.4	35	6.0
T4	Pear	5.5	4.3	59	7.7
T5	Hawthorn	7.5	3.5	38	6.2
T6	Plum	7	6.1	118	10.8
T7	Plum	8	2.4	18	4.3
T8	Sycamore	15	7.2	163	12.8
G9	Copper Beech	16	4.0	49	7.0
T10	Oak	16	7.2	163	12.8
T11	Yew	11	9.4	275	16.6
T12	Yew	12	4.5	65	8.1
T13	Dead Tree	6	2.4	18	4.3





Impact Assessment Plan  
(Existing Layout with Proposals Overlay)

Proposed Layout (Pink)






Drawing No:	CCL 10812	/ IAP Rev: 1
Title:	Impact Assessment Plan (Existing Layout with Proposals Overlay)	
Site:	133 King Henrys Road, London, NW3 3RD	
Scale:	0 5 10m	1:100
Paper Size:	A1	



Tree Retention Categories	
Stems & canopies shown	
	Category A tree
	Category B tree
	Category C tree
	Category U tree

	Trees of high quality with an estimated life expectancy of 40+ years. Usually large trees with significant presence or smaller trees with excellent form. Retention of these trees is highly desirable.
	Trees of moderate quality with a life expectancy of 20+ years. Usually maturing trees, or younger trees with good form. Retention of these trees is desirable though less than Category A trees.
	Unremarkable trees of low quality and merit. Individual specimens are not considered to be a material planning consideration.
	Trees unsuitable for retention due to their very poor condition.

Impact Assessment Plan

	BS 5837 Root Protection Area (radius = 12xstem diameter)	
	Root Protection Area needing amendment due to site conditions, e.g. presence of existing road or building.	
	Root Protection Area having been amended to account for site conditions	
T1 = Tree No 1	G2 = Group No 2	H3 = Hedge No 3

	Tree to be removed to facilitate the proposal
	Tree to be removed due to its low quality
	Proposed pruning

MN = Measured North:	Canopy spreads are sometimes measured to an approximate N defined by site features. Often more accurate, especially where rows of trees are not aligned N-S or E-W.
----------------------	---

Tree Ref.	Species	Height (m)	Root Protection Area		
			Radius (m)	m <sup>2</sup>	Square (m)
T1	Sycamore	11	8.4	222	14.9
T2	Horse Chestnut	12	6.6	137	11.7
T3	Hawthorn	5.5	3.4	35	6.0
T4	Pear	5.5	4.3	59	7.7
T5	Hawthorn	7.5	3.5	38	6.2
T6	Plum	7	6.1	118	10.8
T7	Plum	8	2.4	18	4.3
T8	Sycamore	15	7.2	163	12.8
G9	Sycamore	16	4.0	49	7.0
T10	Copper Beech	16	7.2	163	12.8
T11	Oak	11	9.4	275	16.6
T12	Yew	12	4.6	65	8.1
T13	Dead Tree	6	2.4	18	4.3