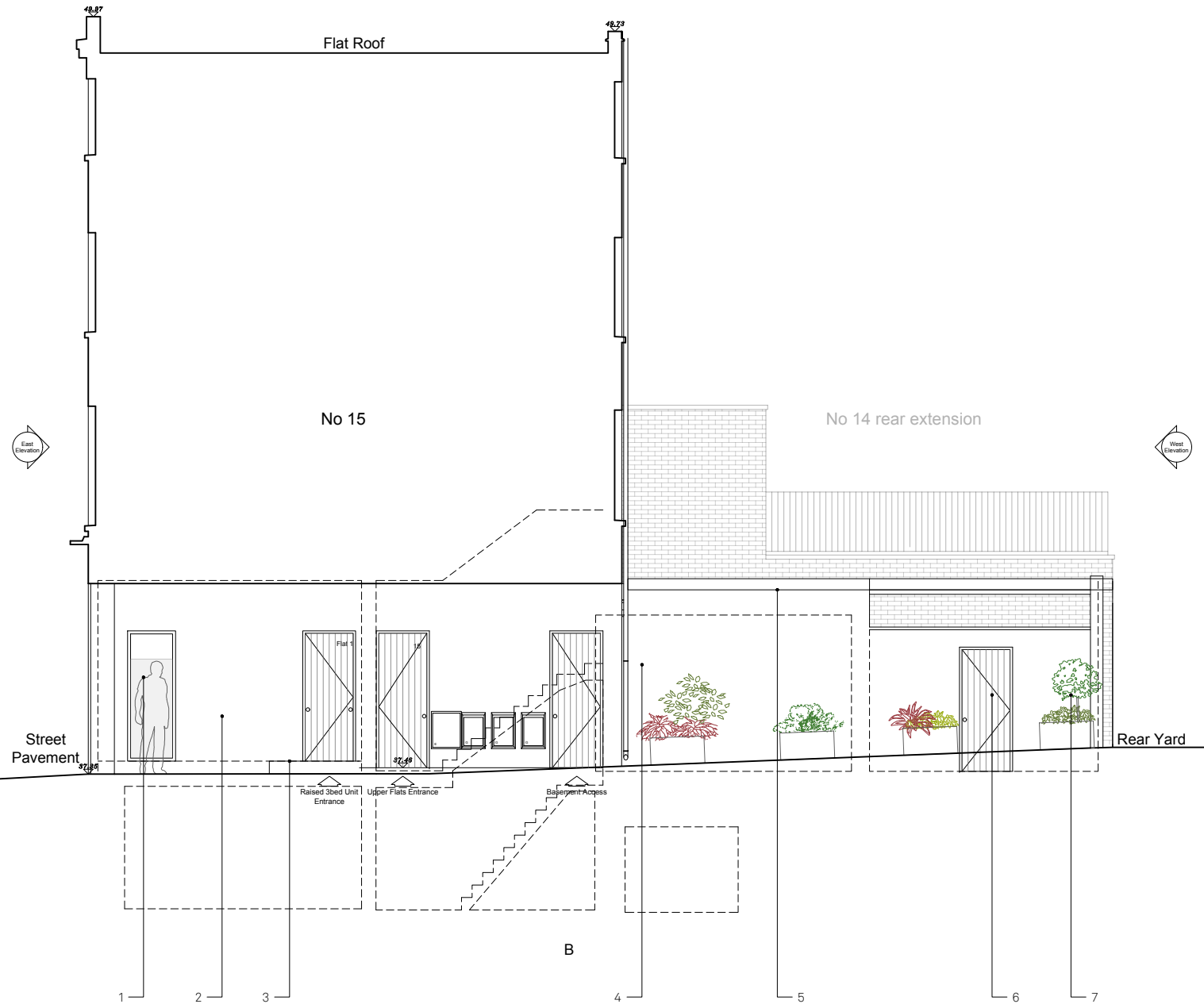


PROPOSED NORTH ELEVATION

1:100

KEY

1. New window with obscured glazing at lower level for privacy.
2. Redecorate wall with white stucco matching context.
3. Raised access for 3bed flat.
4. New extension in stucco matching context.
5. New flat green roof with rooflight.
6. Secondary entrance to private garden.
7. Planting.



PROPOSED EAST ELEVATION

1:100

KEY

1. New Shopfront with obscured glass at 1500mm above FFL for privacy. Sill at seat level.
2. Openable windows with clear glass.
3. Raised Floor.
4. New Dummy Door with fanlight
5. Redecorate wall with white stucco matching context.



- 18/11/22 DS/BW PLANNING APPLICATION
 A 30/01/23 DS/BW PLANNING - Revised Design
 REV DATE DRAWN/CHK DESCRIPTION

15 York Way
 PR130 - rev A PROPOSED NORTH AND EAST ELEVATIONS

21111 _ PLANNING _ Published 31/01/23



Scale 1:100 @ A3

Do not scale for construction. Use figured dimensions only. All discrepancies to be verified with architect prior to ordering or construction/execution. Confirm all setting out with architect prior to construction. Drawing to be read in conjunction with all other documents. Copyright Architecture for London.

Architecture for London
 3-5 Bleeding Heart Yard
 London EC1N 8SJ
 020 3637 4236
 architectureforlondon.com

**Architecture
 for London.**