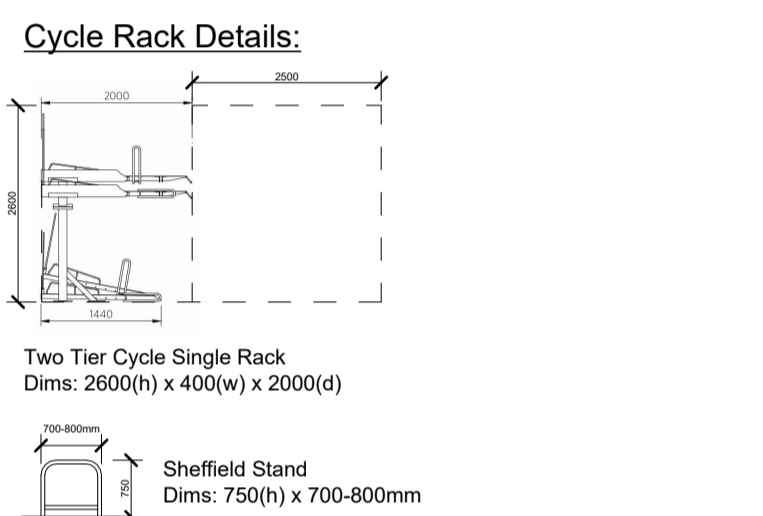


Eton Place

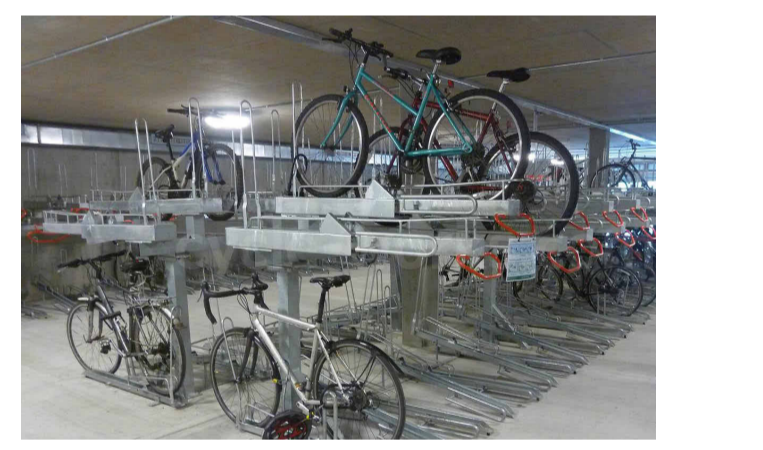
PWA Code: 22014
 Notes: Use annotated dimensions only. All dimensions in millimeters unless otherwise stated. This drawing is to be read in conjunction with all other related material. Any discrepancies, conflicts or errors must be reported to Piper Whitlock Architecture before commencing work.

NOTE: This drawing is generated from a federated Revit model, as such the Structural and M&E elements shown were not modelled by Piper Whitlock Architecture (PWA). PWA do not take any responsibility for the design of the other consultant information referenced into PWA's drawing and all such information should be sourced/interrogated from drawings/models provided by the companies responsible for their creation.

- Key:**
- Route to residential cycle store
 - Market Units Cycle Store (Block A&B) (100 spaces)
 - 45 Two Tier Single Racks
 - 5 Sheffield Hoops
 - Affordable Housing Cycle Store (Block C) (32 spaces)
 - 14 Two Tier Racks
 - 2 Sheffield Hoops
 - Sheffield bike hoops providing 4no. visitor spaces
 - Sheffield bike hoops providing 10no. Retail spaces
 - Push button / Pressure pad operated automated door. Min. 1200mm clear opening width
 - Covered, secure long stay staff cycle parking spaces. 1 Cycle per unit



- Notes:**
- Cycle storage area walls to be constructed using blockwork
 - Lighting to all cycle storage areas to be fitted with PIR sensors



G4	Planning Issue	21-02-2023	PD	PD
G3	Planning Issue	08-02-2023	SP	PD
G2	Planning Issue	02-02-2023	SP	PD
G1	Planning Issue	06-12-2022	SP	PD
Rev	Comments	Date	Dr	Ch



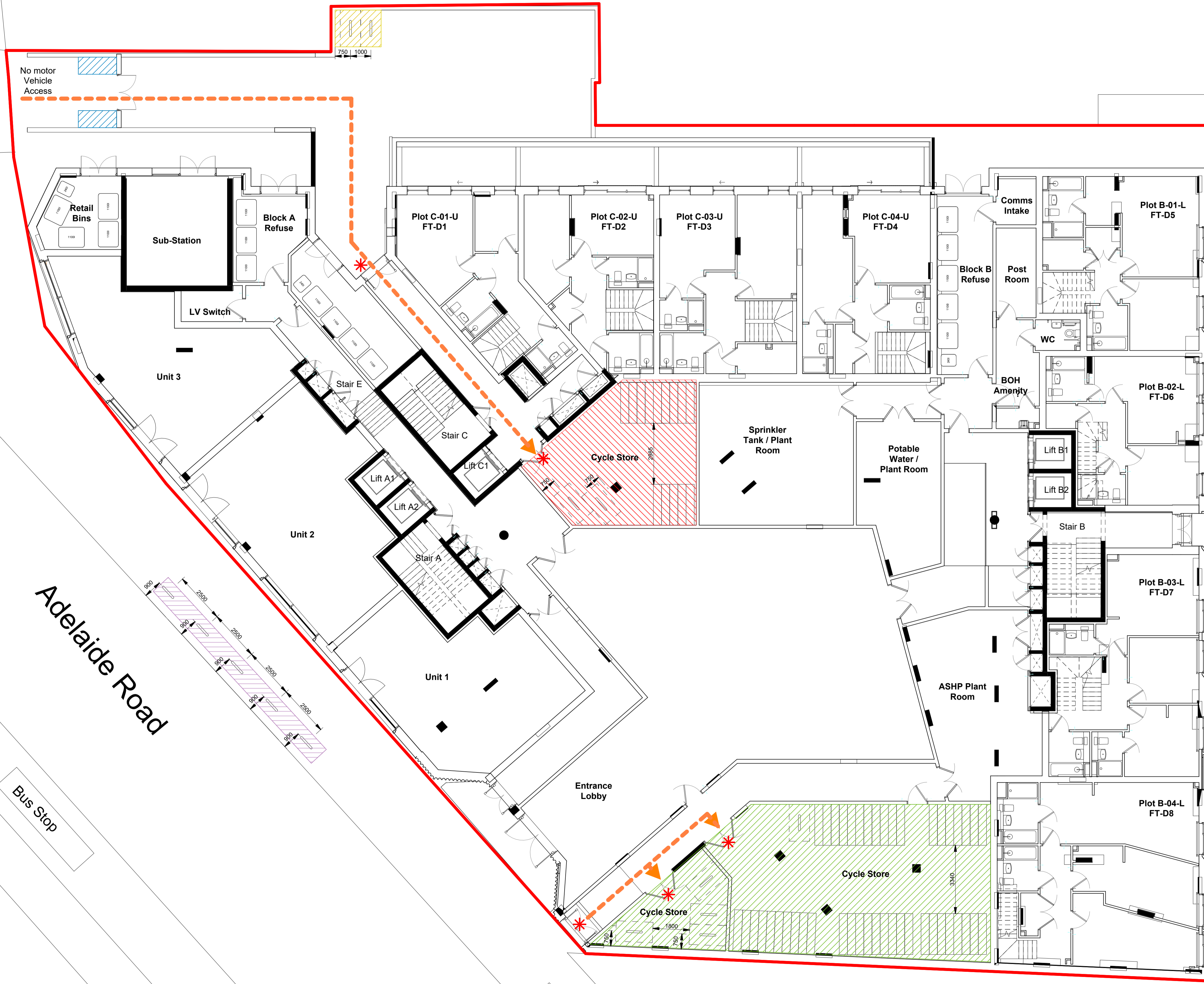
©Piper Whitlock Architecture Ltd.
 2nd Floor, Anglo St. James House, 38a Southgate Street, Winchester, Hampshire SO23 9EH
 Tel: 01962 843095, Email: enquiries@piperwhitlock.co.uk, www.piperwhitlock.co.uk

Project Name:
Haverstock Hill, Camden

Client:
OD Camden Hotel Ltd

Drawing Title:
**Planning Condition 4 & 13
 Cycle Store Plan**

Project Ref:	Orig:	Zone:	Lev:	Type:	Role:	Num:	Rev:
HHCAM - PWA-00 - 00 - DR-A-0130 - G4							
Status:	Stage:	Scale @ A1:					
PLANNING	4	1 : 100					



Haverstock Hill

Chalk Farm Station

Adelaide Road

Bus Stop

Bus Stop