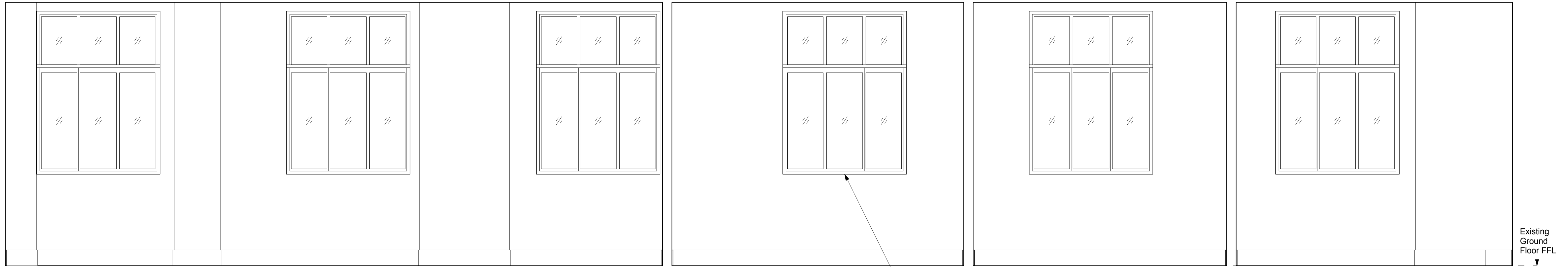


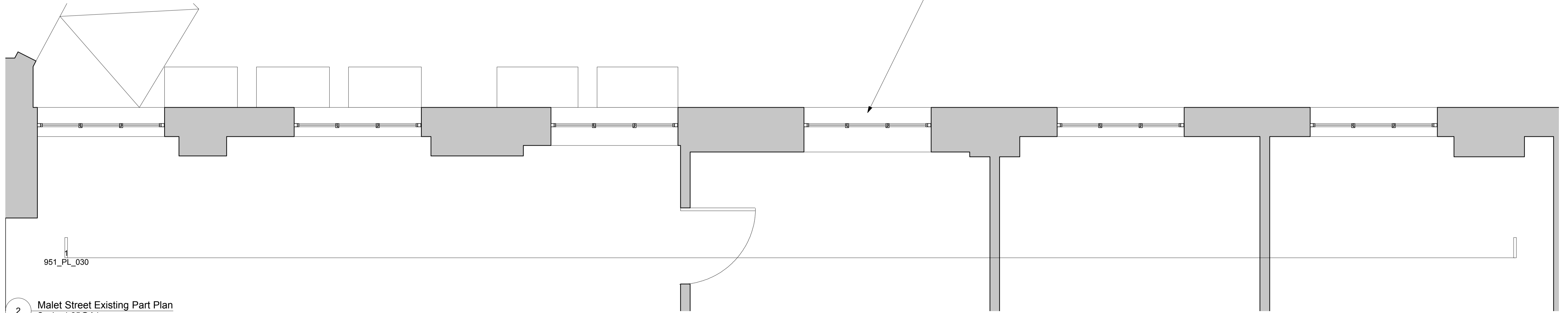
For window locations refer to
location key plans (drawing
951/PL/005 - 951/PL/015)



Existing
Ground
Floor FFL

1 Malet Street Existing Windows Elevation (from inside building)
Scale: 1:25@A1

Existing double glazed, uPVC framed painted windows.
Outward opening panes.



951_PL_030

2 Malet Street Existing Part Plan
Scale: 1:25@A1

Revision	Date	Amendment	Notes
A	10.02.2023	Planning Issue	

Client	London School of Hygiene & Tropical Medicine		
Project	Phase 3 External Fire Strategy		
Drawing	Malet Street Existing Windows		
Scale	1:25 @ A1	Drawn	TW
Date	January 2023		
Project N°	951	Drawing N°	951_PL_030
		Revision	A

Burwell Architects
www.burwellarchitects.com
 info@burwellarchitects.com
 Unit 0.01 California Building
 Deals Gateway
 London SE13 7SB
 020 8305 6010

NO DIMENSIONS ARE TO BE SCALED FROM THIS DRAWING. THE CONTRACTOR/MANUFACTURER IS RESPONSIBLE FOR CHECKING ALL DIMENSIONS AND QUERING ANY DISCREPANCIES. THIS DRAWING IS THE PROPERTY OF BURWELL ARCHITECTS LTD. COPYRIGHT IS RESERVED BY THEM AND THE DRAWING IS ISSUED ON CONDITION THAT IT IS NOT COPIED, REPRODUCED, RETAINED OR DISCLOSED TO ANY UNAUTHORISED PERSON EITHER WHOLLY OR IN PART WITHOUT WRITTEN CONSENT.