

© This drawing is the property of Miltiadou Cook Mitzman architects. No disclosure or copy of it may be made without the written permission of Miltiadou Cook Mitzman architects.

For construction purposes:

- Do not scale this drawing.
- All dimensions and levels to be checked on site.
- Discrepancies to be reported to Miltiadou Cook Mitzman architects before proceeding.
- If in any doubt about information on this drawing contact Miltiadou Cook Mitzman architects.

REVISION			
NUMBER	DATE	BY	NOTES
T1	05/10/2022	CG	Tender Reissue

NOTES:

D-03-03(N)

DOOR TO BE SUPPLIED BY ODC DOORS.

PLEASE REFER TO MANUFACTURER'S INSTALLATION GUIDE.

MCMa

MILTIADOU
COOK
MITZMAN architects llp

020 7722 8525
office@mcma.design
www.mcma.design

Unit 1 Primrose Mews
Sharpleshall Street
London NW1 8YW

CLIENT
Davidson & Fealy

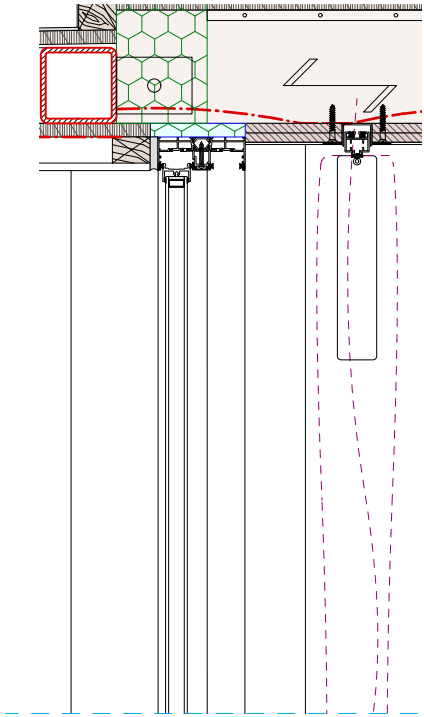
PROJECT
72 Albert Street

SHEET TITLE
Third Floor Sliding Doors

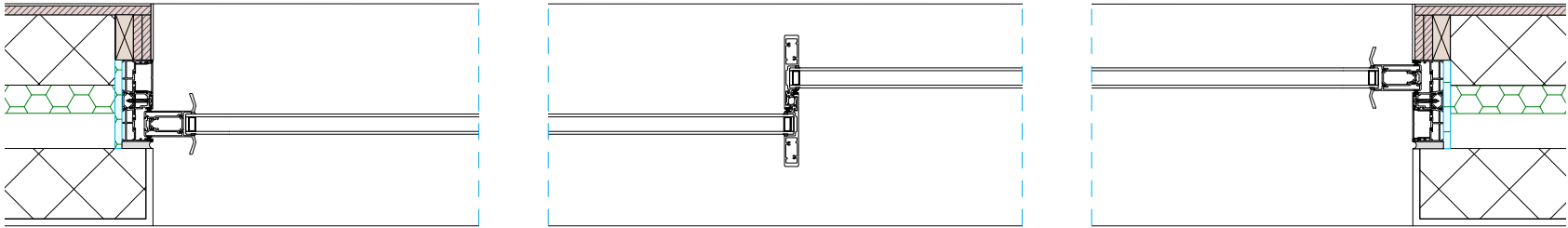
SCALE
1:10

DATE CREATEDFILE REFERENCE

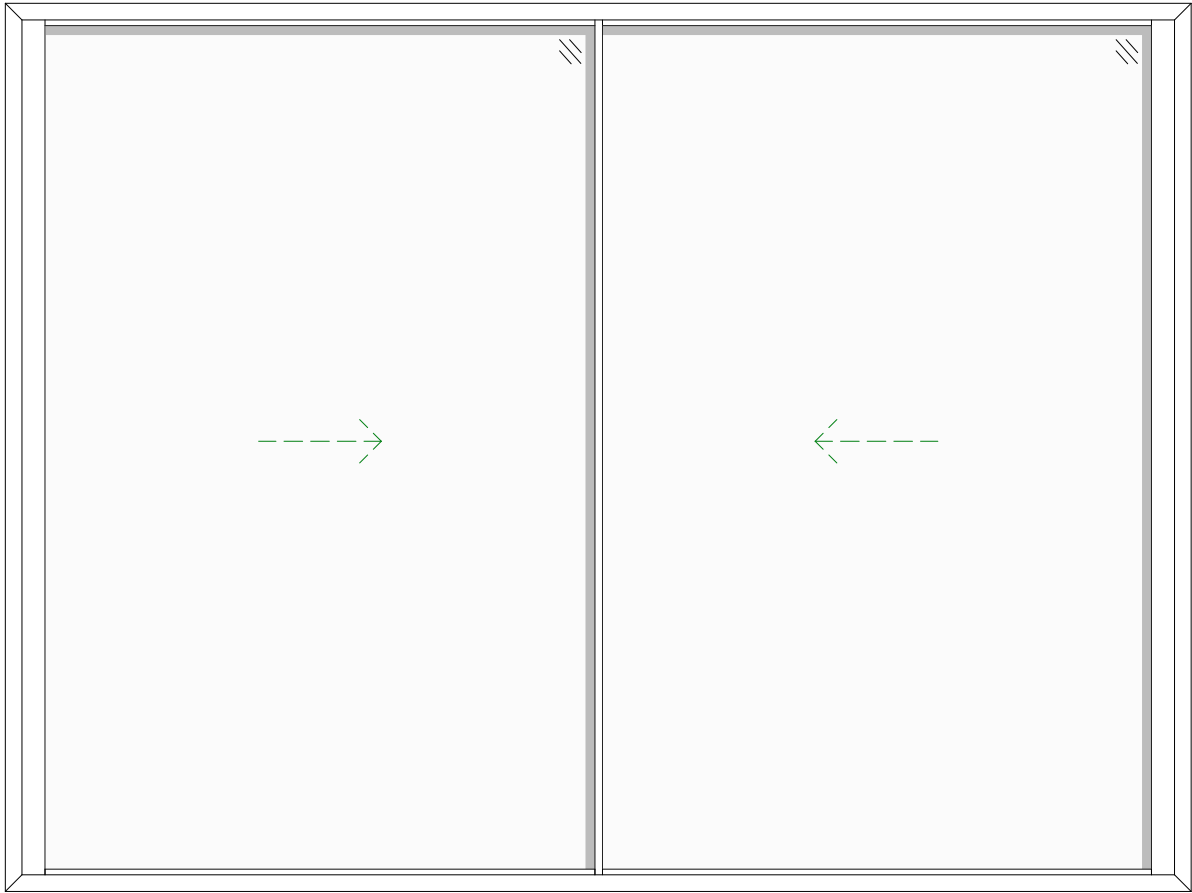
DRAWING NUMBER	REVISION
314-DWG-345	T1



1 Section
1:10



2 Plan
1:10



5 Elevation
1:20