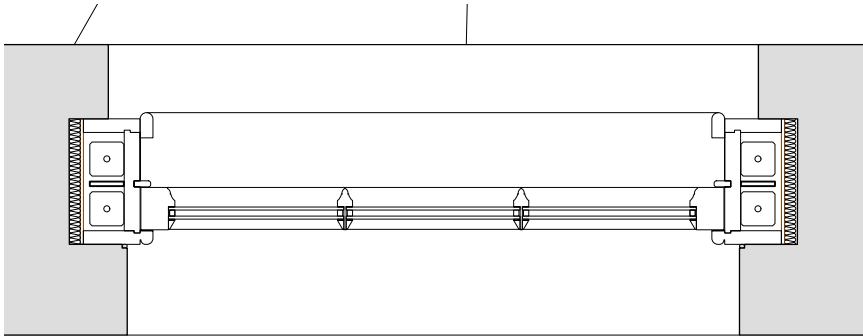


© This drawing is the property of Miltiadou Cook Mitzman architects. No disclosure or copy of it may be made without the written permission of Miltiadou Cook Mitzman architects.

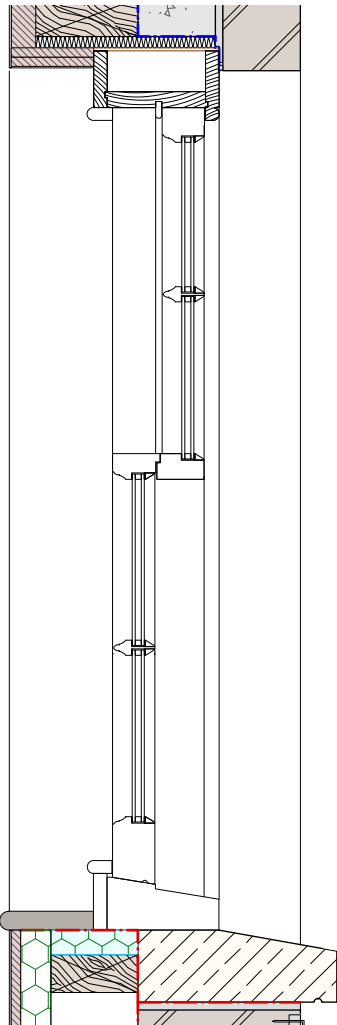
For construction purposes:

- Do not scale this drawing.
- All dimensions and levels to be checked on site.
- Discrepancies to be reported to Miltiadou Cook Mitzman architects before proceeding.
- If in any doubt about information on this drawing contact Miltiadou Cook Mitzman architects.

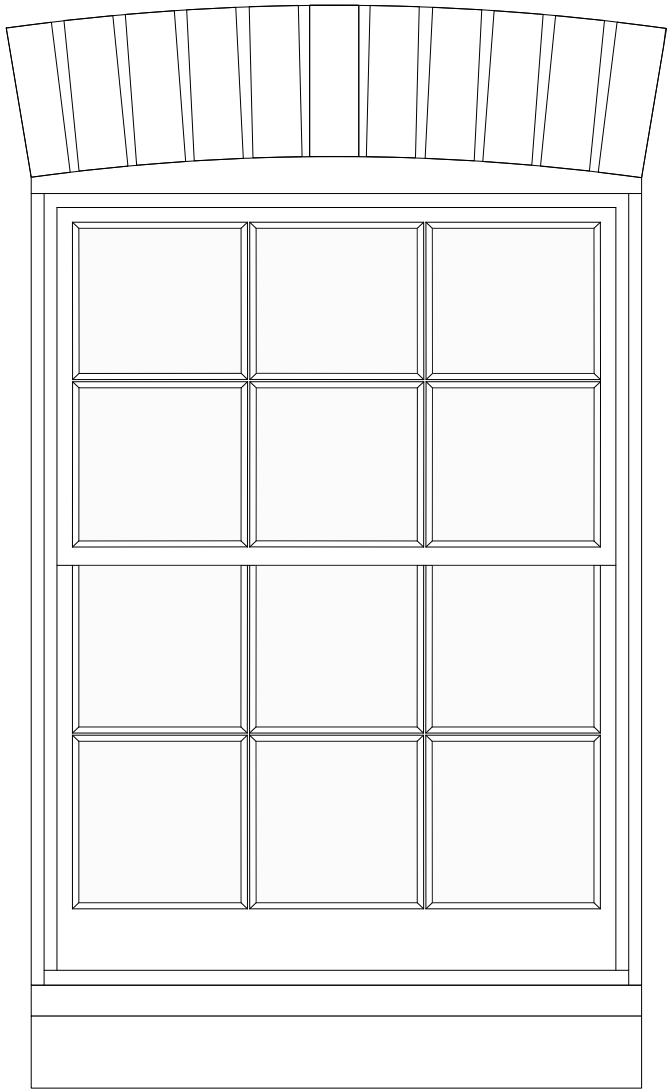
REVISION			
NUMBER	DATE	BY	NOTES
T1	02/10/2020	OB	Issued to Tender
T2	05/10/2022	CG	Tender Reissue



2 Plan
1:10



1 Section
1:10



3 Elevation
1:10

NOTES:

D-01-04(N)

WINDOW TO BE SUPPLIED BY VENTROLA.

PLEASE REFER TO MANUFACTURER'S
INSTALLATION GUIDE.

MCMa

MILTIADOU
COOK
MITZMAN architects llp

020 7722 8525

office@mcma.design

www.mcma.design

Unit 1 Primrose Mews

Sharpleshall Street

London NW1 8YW

CLIENT

Davidson & Fealy

PROJECT
72 Albert Street

SHEET TITLE
First Floor Rear Elevation Window

SCALE
1:10

DATE CREATED FILE REFERENCE

DRAWING NUMBER	REVISION
314-DWG-344	T2