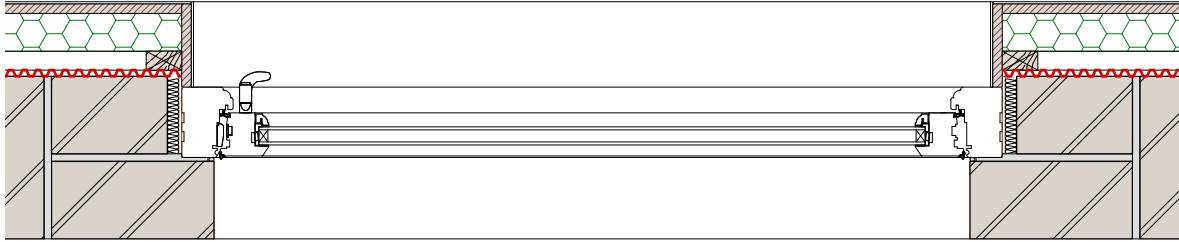
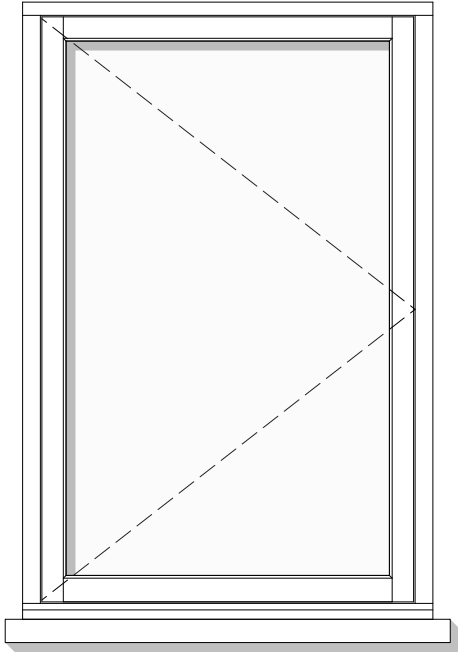


1 Section
1:10



2 Plan
1:10



3 Elevation
1:20

© This drawing is the property of Miltiadou Cook Mitzman architects. No disclosure or copy of it may be made without the written permission of Miltiadou Cook Mitzman architects.

For construction purposes:

- Do not scale this drawing.
- All dimensions and levels to be checked on site.
- Discrepancies to be reported to Miltiadou Cook Mitzman architects before proceeding.
- If in any doubt about information on this drawing contact Miltiadou Cook Mitzman architects.

REVISION			
NUMBER	DATE	BY	NOTES
T1	05/10/2022	CG	Tender Reissue

NOTES:

W-LG-03(N)

WINDOW TO BE SUPPLIED BY VENTROLLA.

PLEASE REFER TO MANUFACTURER'S INSTALLATION GUIDE.

MCMa **MILTIADOU COOK MITZMAN architects llp**

020 7722 8525 Unit 1 Primrose Mews
office@mcma.design Sharpleshall Street
www.mcma.design London NW1 8YW

CLIENT
Davidson & Fealy

PROJECT
72 Albert Street

SHEET TITLE
Lower Ground Floor Rear Extension Window

SCALE
1:10

DATE CREATED **FILE REFERENCE**

DRAWING NUMBER	REVISION
314-DWG-341	T1