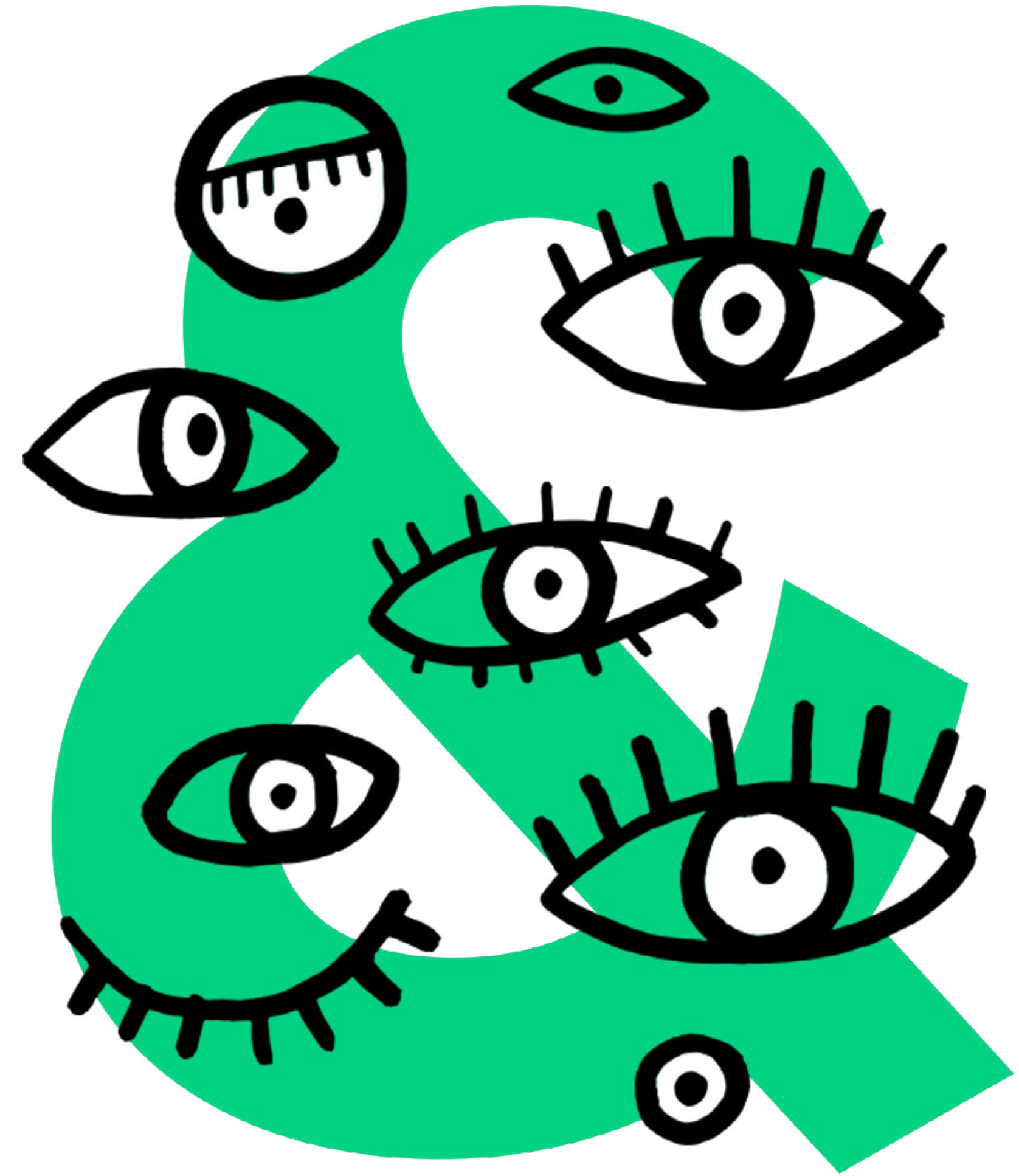


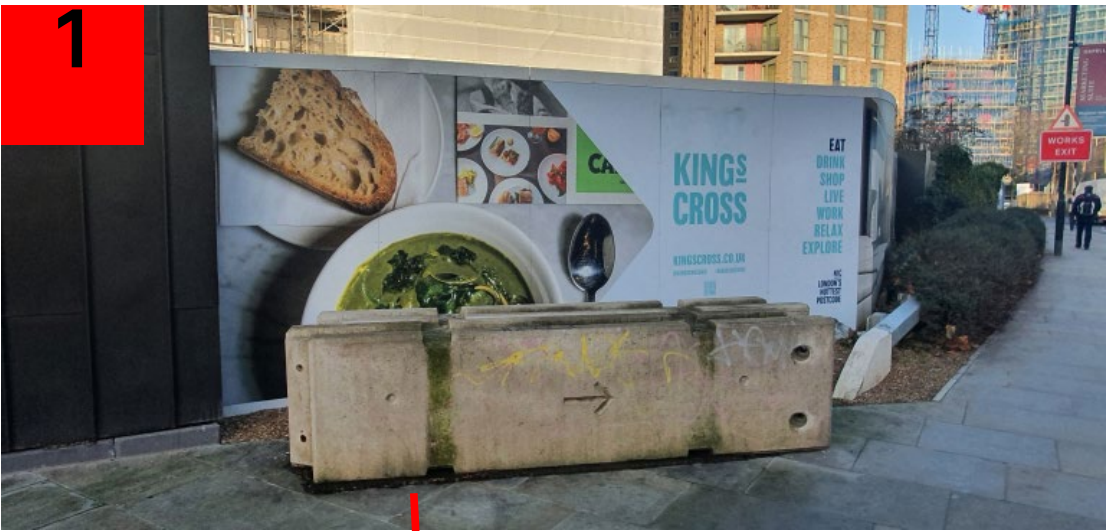
Argent Triangle

Author Fly Posters



Sections

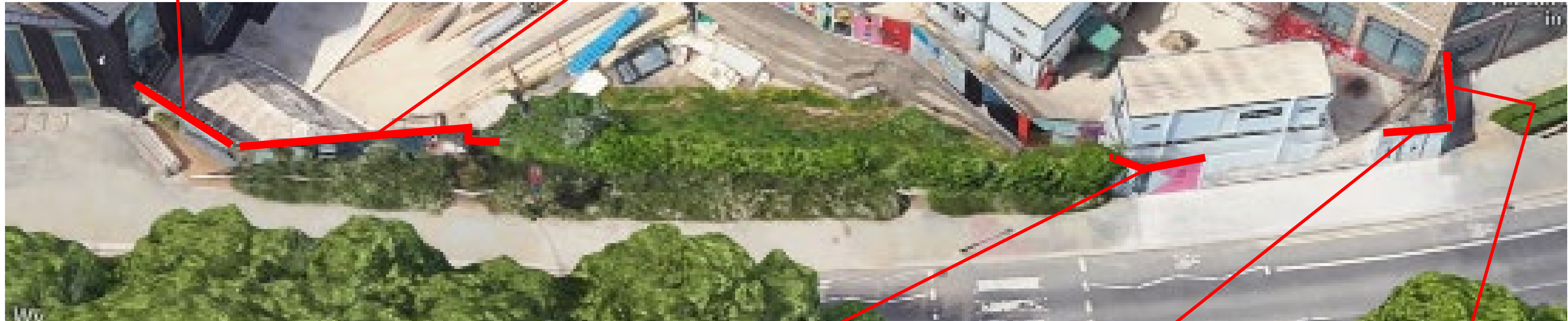
x5 di-bond panels



x11 di-bond panels
only top half vsiible to traffic



Let's utilise these 2 panels?



x5 di-bond panels
and security door



x3 di-bond panels
Avoid mesaging / imagery
Form language + col



x3.5 di-bond panels



Section 1
Fly Posters to stick onto x5 di-bond panels / bottom section obscured

AUTHOR
KING'S CROSS



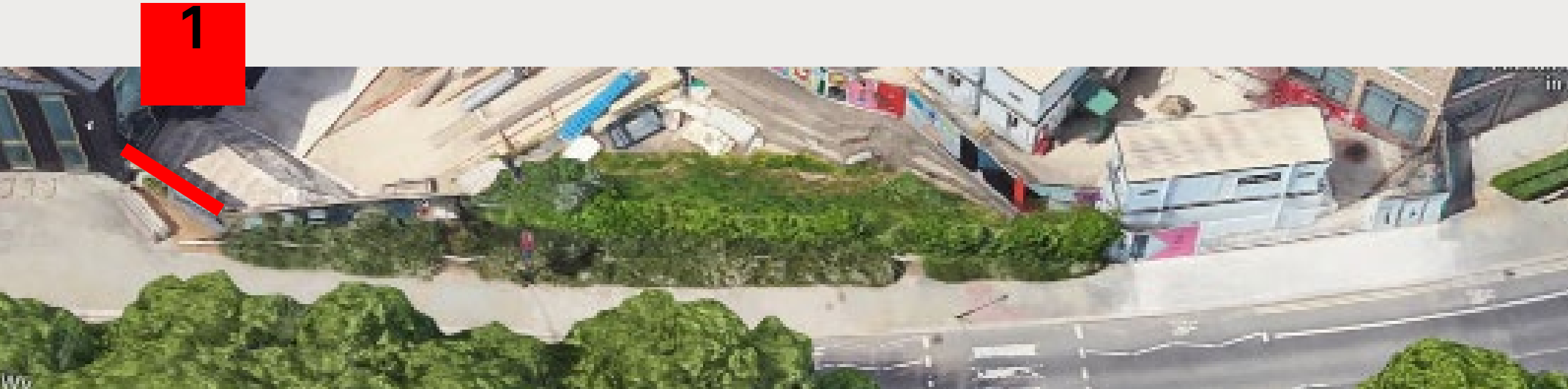
AUTHOR
KING'S CROSS

**A RENTAL
EXPERIENCE
LIKE NO
OTHER**

REGISTER NOW
AUTHORKINGSCROSS.CO.UK

**RESIDENTS' LOUNGE /
COURTYARD GARDEN /
FITNESS CENTRE /
PRIVATE CINEMA /
COMMUNITY EVENTS /
CO-WORKING SPACES /
COFFEE BAR / PRIVATE
DINING ROOM / PARKING
GARAGE / 24-HOUR
CONCIERGE / PETS
WELCOME / WELL
CONNECTED / EUROSTAR
ON YOUR DOORSTEP /
SUPERFAST INTERNET /
FULLY FURNISHED /
FLOOR-TO-CEILING
VIEWS / EXCLUSIVE
PARTNERSHIPS**

AUTHOR
KING'S CROSS



Section 2
Fly Posters to stick onto x11 di-bond panels / only top half visible to traffic



Section 3
Fly Posters to stick onto x5 di-bond panels and security door



AUTHOR
KING'S CROSS

AUTHOR
KING'S CROSS

**A RENTAL
EXPERIENCE
LIKE NO
OTHER**



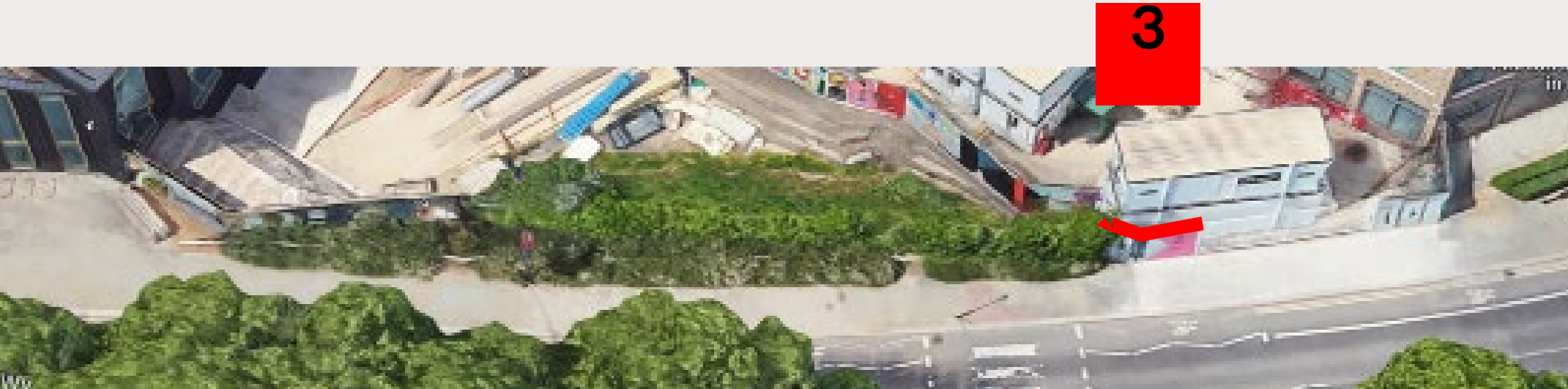
REGISTER NOW
AUTHORKINGSCROSS.CO.UK



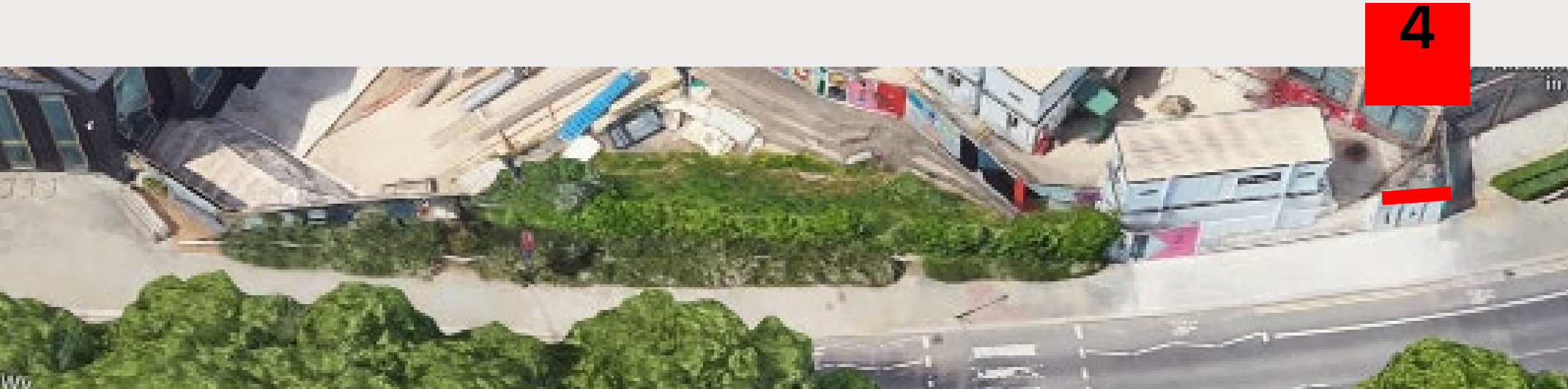
**RESIDENTS' LOUNGE /
COURTYARD GARDEN /
FITNESS CENTRE /
PRIVATE CINEMA /
COMMUNITY EVENTS /
CO-WORKING SPACES /
COFFEE BAR / PRIVATE
DINING ROOM / PARKING
GARAGE / 24-HOUR
CONCIERGE / PETS
WELCOME / WELL
CONNECTED / EUROSTAR
ON YOUR DOORSTEP /
SUPERFAST INTERNET /
FULLY FURNISHED /
FLOOR-TO-CEILING
VIEWS / EXCLUSIVE
PARTNERSHIPS**



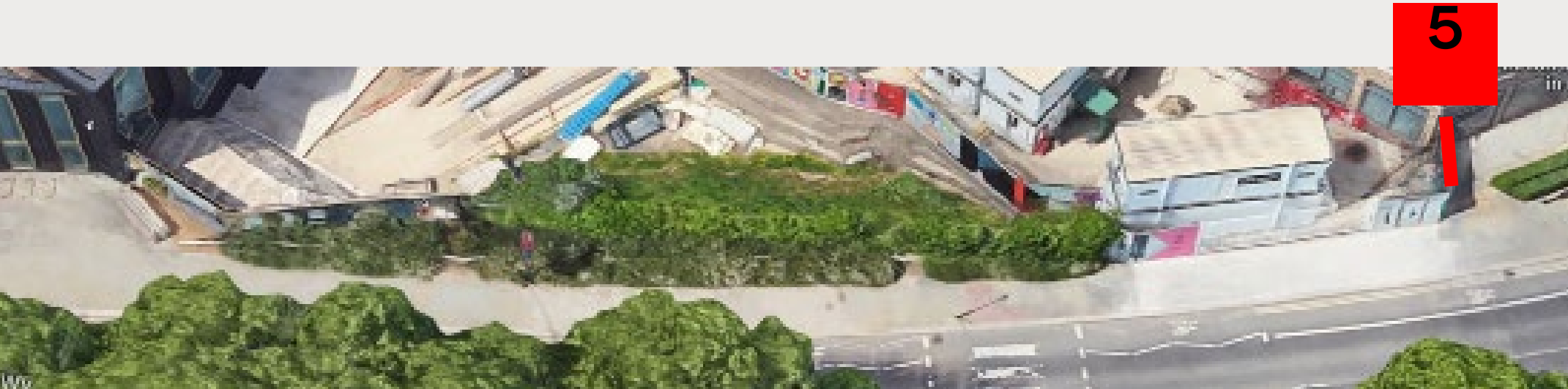
AUTHOR
KING'S CROSS



Section 4
Fly Posters to stick onto x3 di-bond panels. Avoid messaging as main access door. Paint red



Section 5
Fly Posters to stick onto x3.5 di-bond panels



AUTHOR Fly Posters
Requires a site survey as this count up of panels is based upon the recce shots.

That's it from us!

Tabard Works
6-12 Tabard Street
London SE1 4JU

020 7490 5020
hello@me-and-dave.com
[@meanddavestudio](https://www.meanddavestudio.com)



me&dave