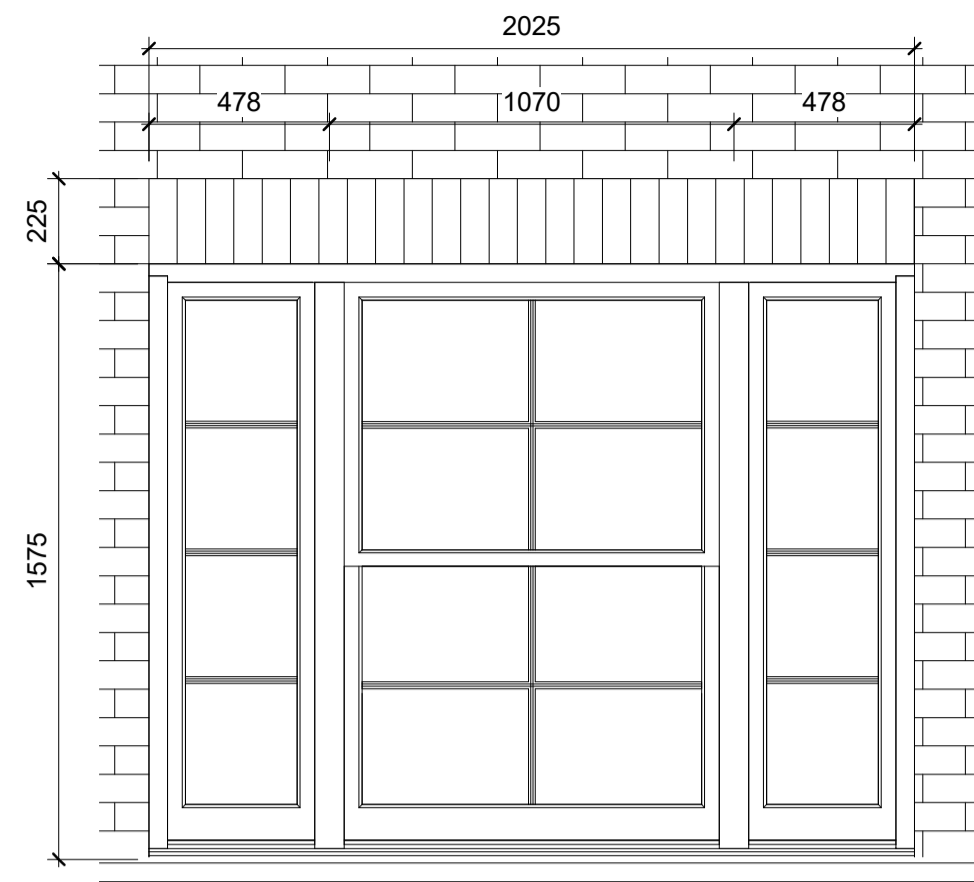


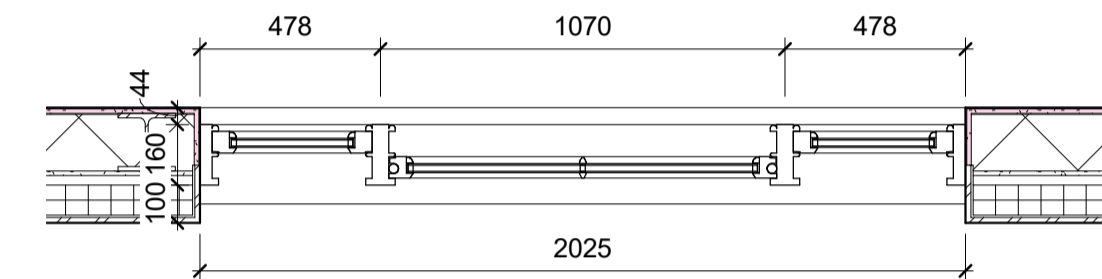
Window Schedule						
Window Type	Window Number	Height	Width	Acoustic Rating	Description	Sash Catch Options
<b>Level 04 ex</b>						
Win_01	04-1	1575	2025	44 dB	Wooden conservation spring sash window	Brighton catch, Hook catch
Win_01	04-2	1575	2025	44 dB	Wooden conservation spring sash window	Brighton catch, Hook catch
Win_02	04-3	1575	2025	44 dB	Wooden conservation spring sash window	Brighton catch, Hook catch
Win_03	04-4	1575	2025	44 dB	Wooden conservation spring sash window	Brighton catch, Hook catch
Win_01	04-5	1575	2025	44 dB	Wooden conservation spring sash window	Brighton catch, Hook catch
Win_04	04-6	1575	1425	44 dB	Wooden conservation spring sash window	Brighton catch, Hook catch
Win_04	04-7	1575	1425	44 dB	Wooden conservation spring sash window	Brighton catch, Hook catch

<b>Level 05</b>						
Win_01	05-1	1575	2025	44 dB	Wooden conservation spring sash window	Brighton catch, Hook catch
Win_01	05-2	1575	2025	44 dB	Wooden conservation spring sash window	Brighton catch, Hook catch
Win_05	05-3	1575	2025	44 dB	Wooden conservation spring sash window	Brighton catch, Hook catch
Win_01	05-4	1575	2025	44 dB	Wooden conservation spring sash window	Brighton catch, Hook catch
Win_01	05-5	1575	2025	44 dB	Wooden conservation spring sash window	Brighton catch, Hook catch
Win_04	05-6	1575	1425	44 dB	Wooden conservation spring sash window	Brighton catch, Hook catch
Win_04	05-7	1575	1425	44 dB	Wooden conservation spring sash window	Brighton catch, Hook catch

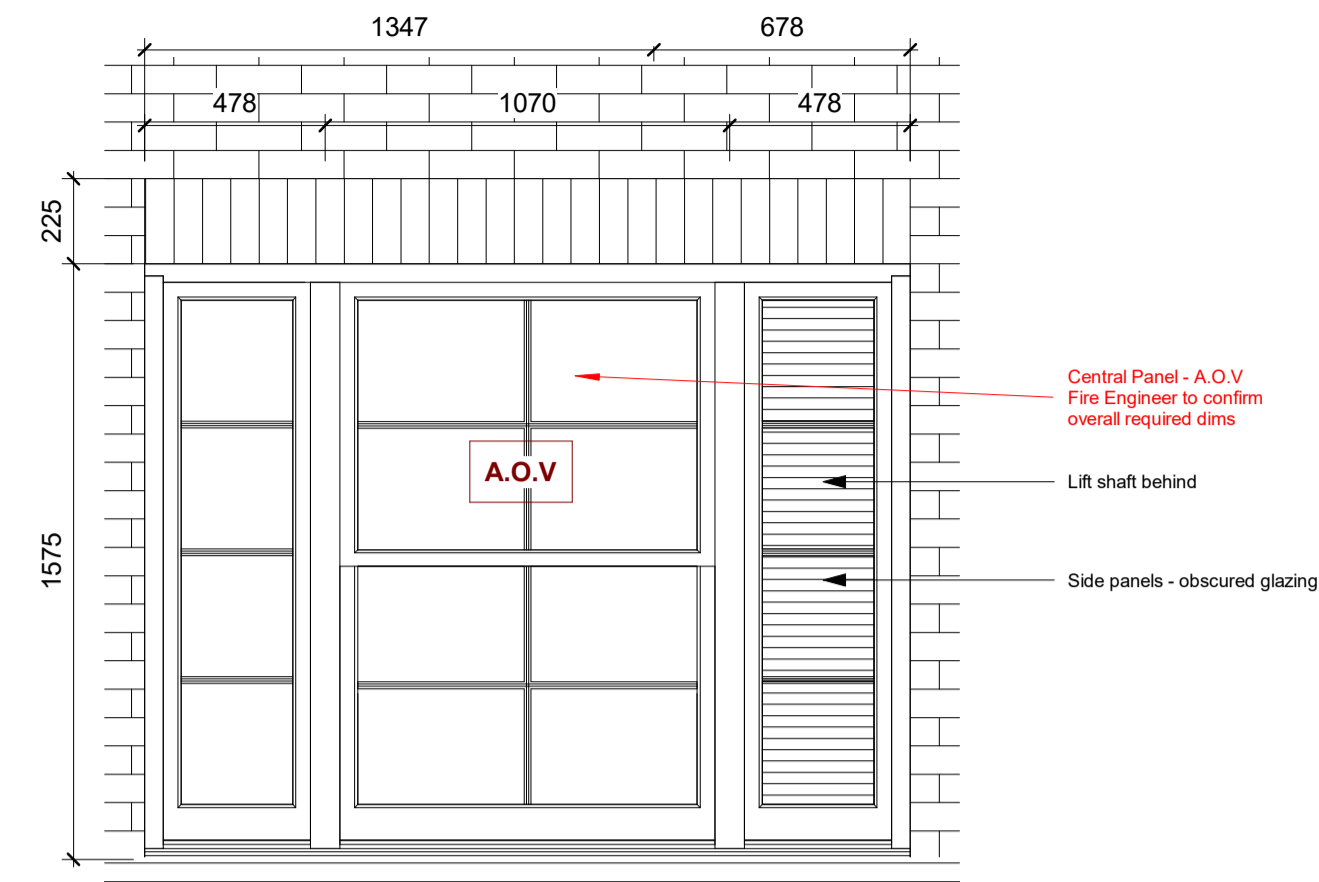
Roof Access Hatch Schedule				
Window Type	Window Number	Length	Width	Type
<b>Roof Level</b>				
Win-06	W-06_1	2000	2000	Lamilux FE 5° QUADRAT NOT 0.6 Clima ESG 200/200 RAL9016 K50-5 LS S 0.68 LOD500
Win-06	W-06_2	2000	2000	Lamilux FE 5° QUADRAT NOT 0.6 Clima ESG 200/200 RAL9016 K50-5 LS S 0.68 LOD500



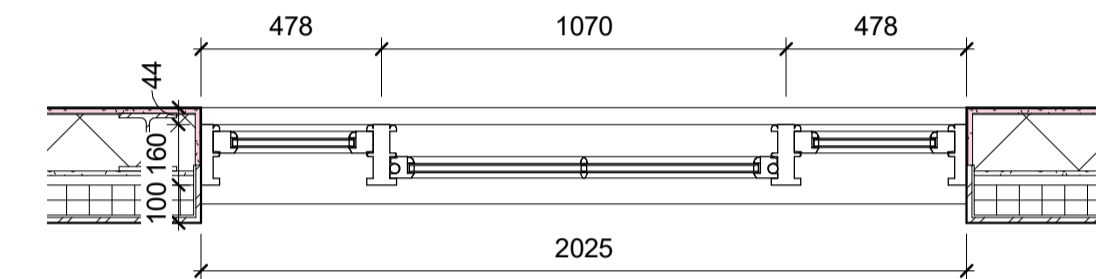
1 WIN-01 Elevation  
1 : 20



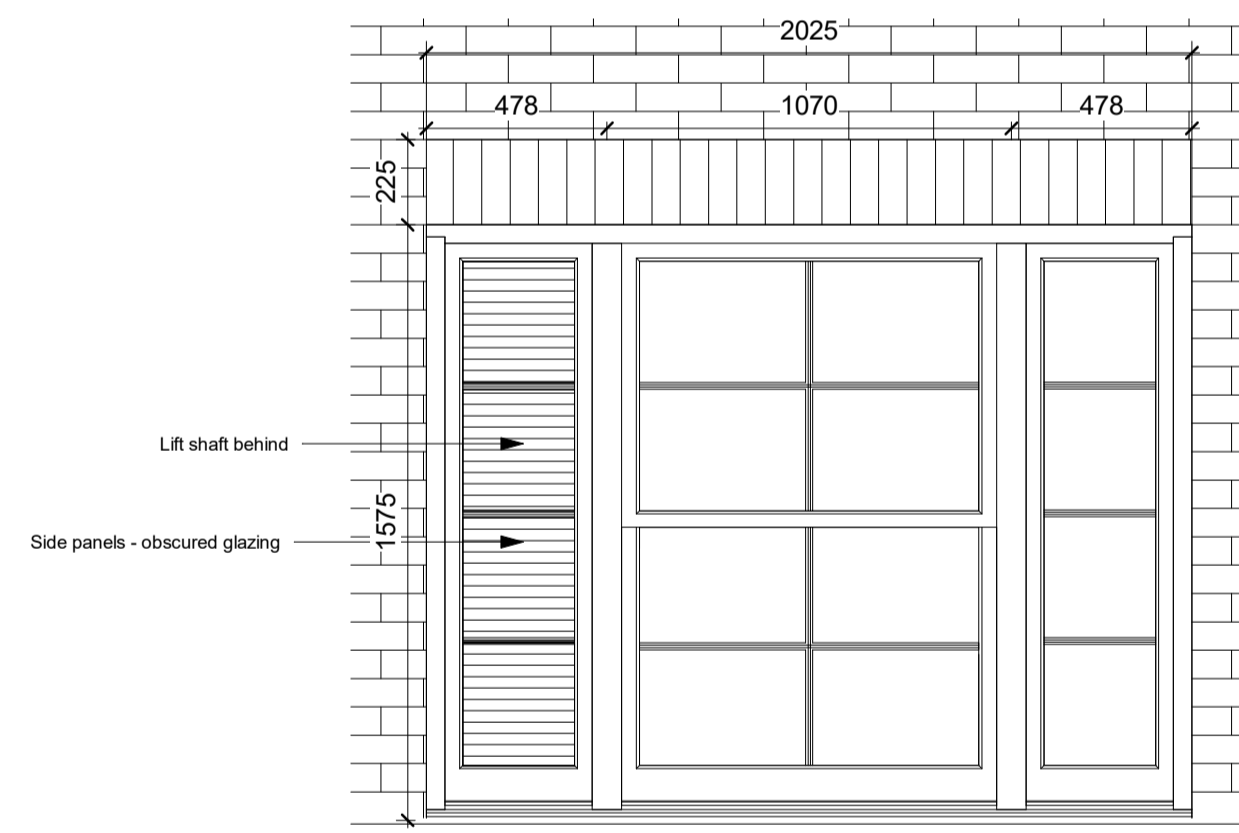
2 WIN-01 Plan  
1 : 20



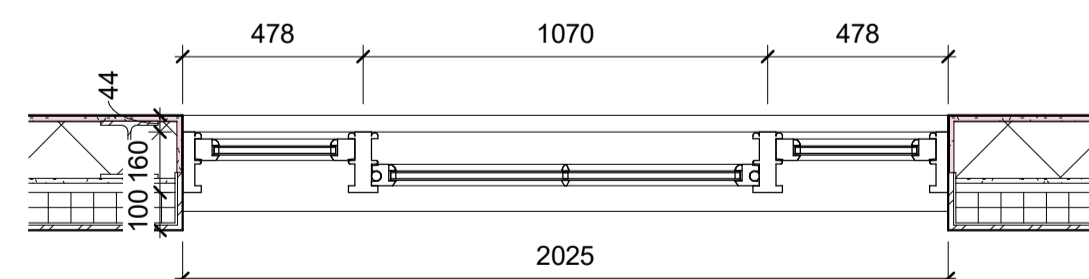
3 WIN-02 Elevation  
1 : 20



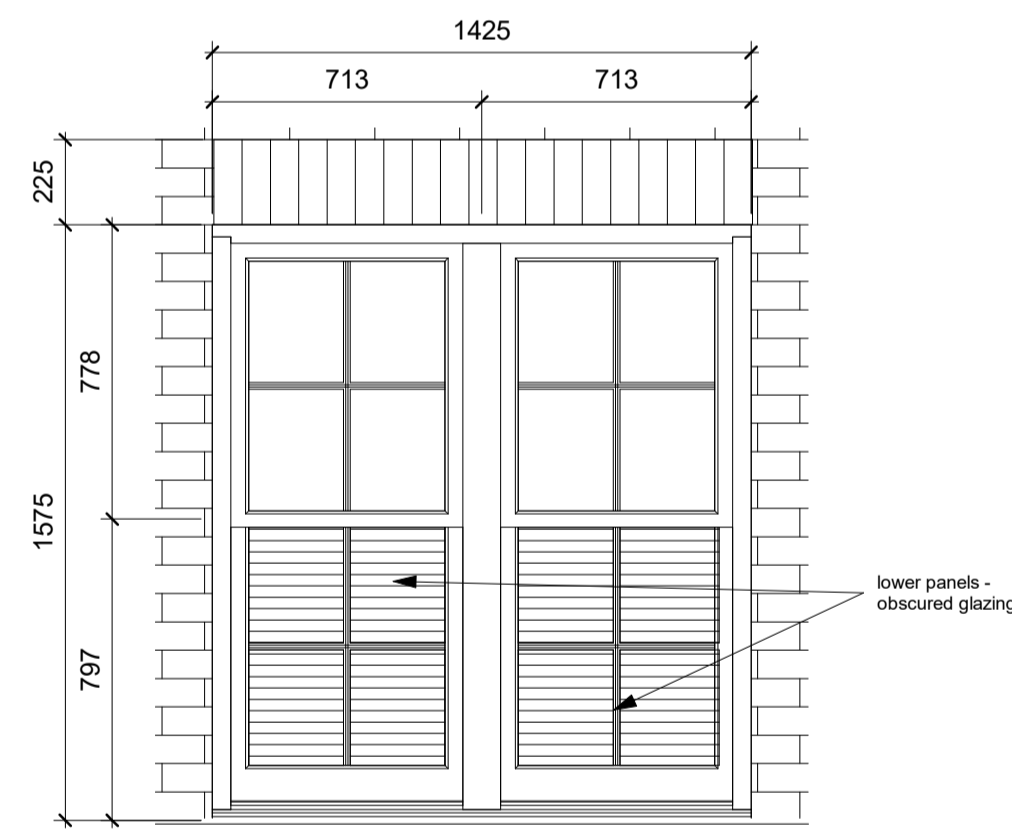
4 WIN-02 Plan  
1 : 20



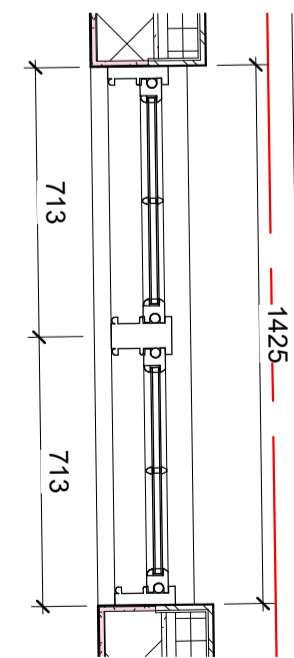
5 WIN-03 Elevation  
1 : 20



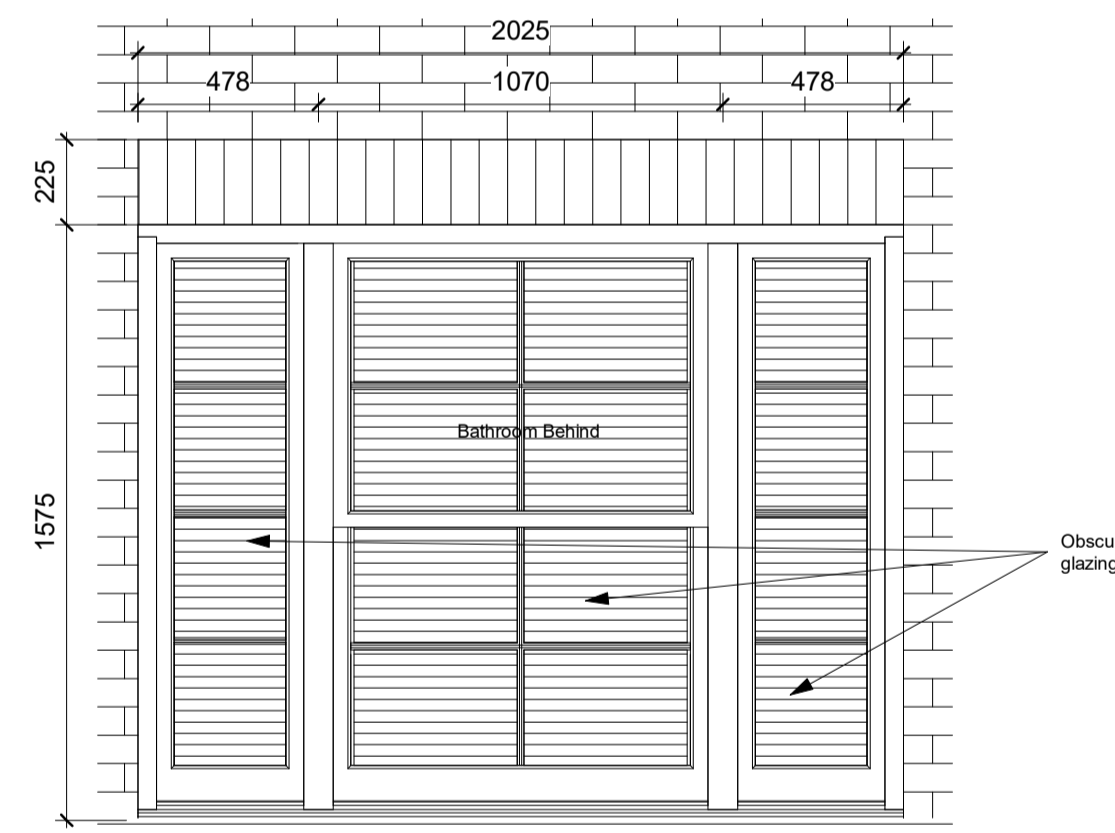
6 WIN-03 Plan  
1 : 20



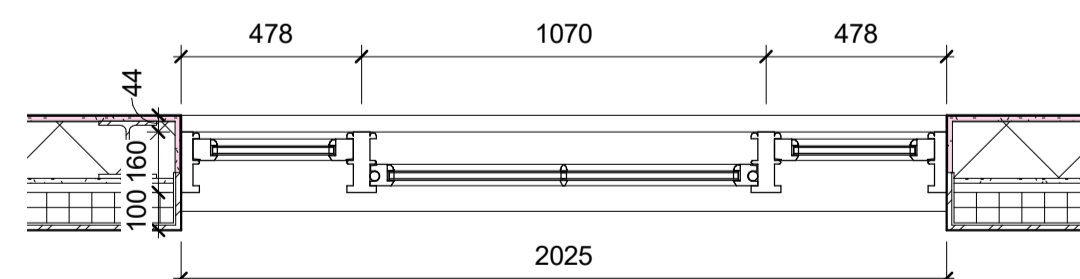
7 Win-04 Elevation  
1 : 20



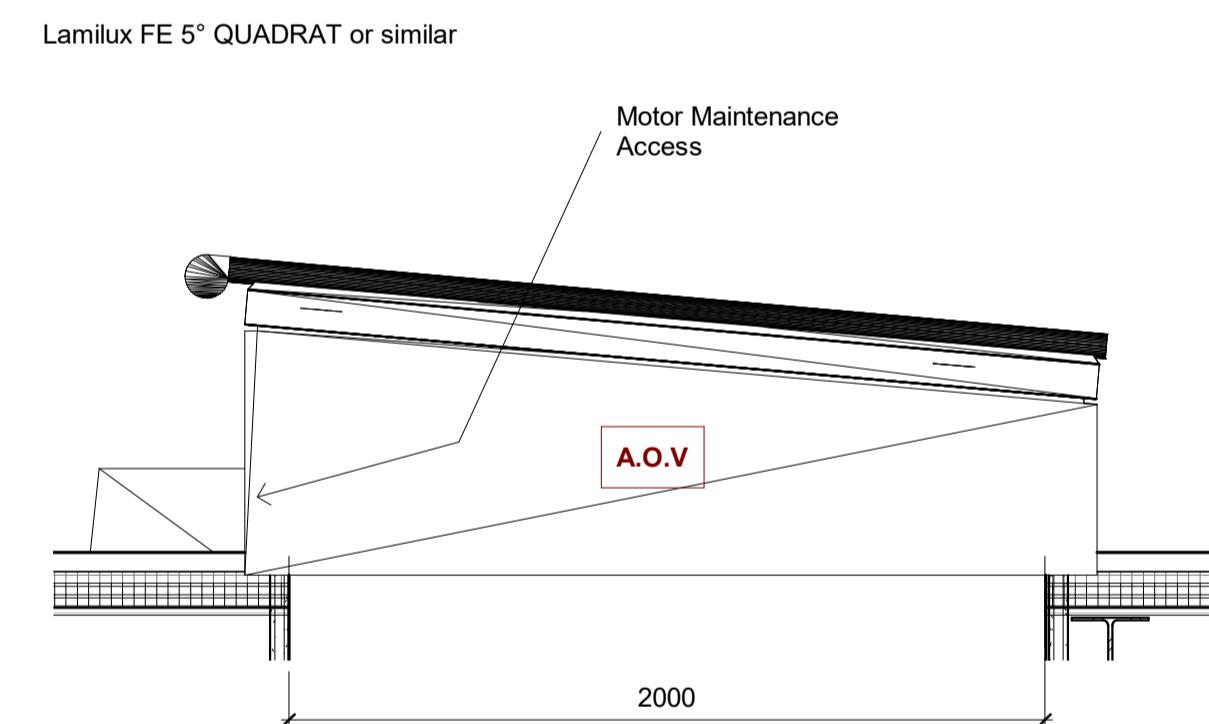
8 WIN-04 Plan  
1 : 20



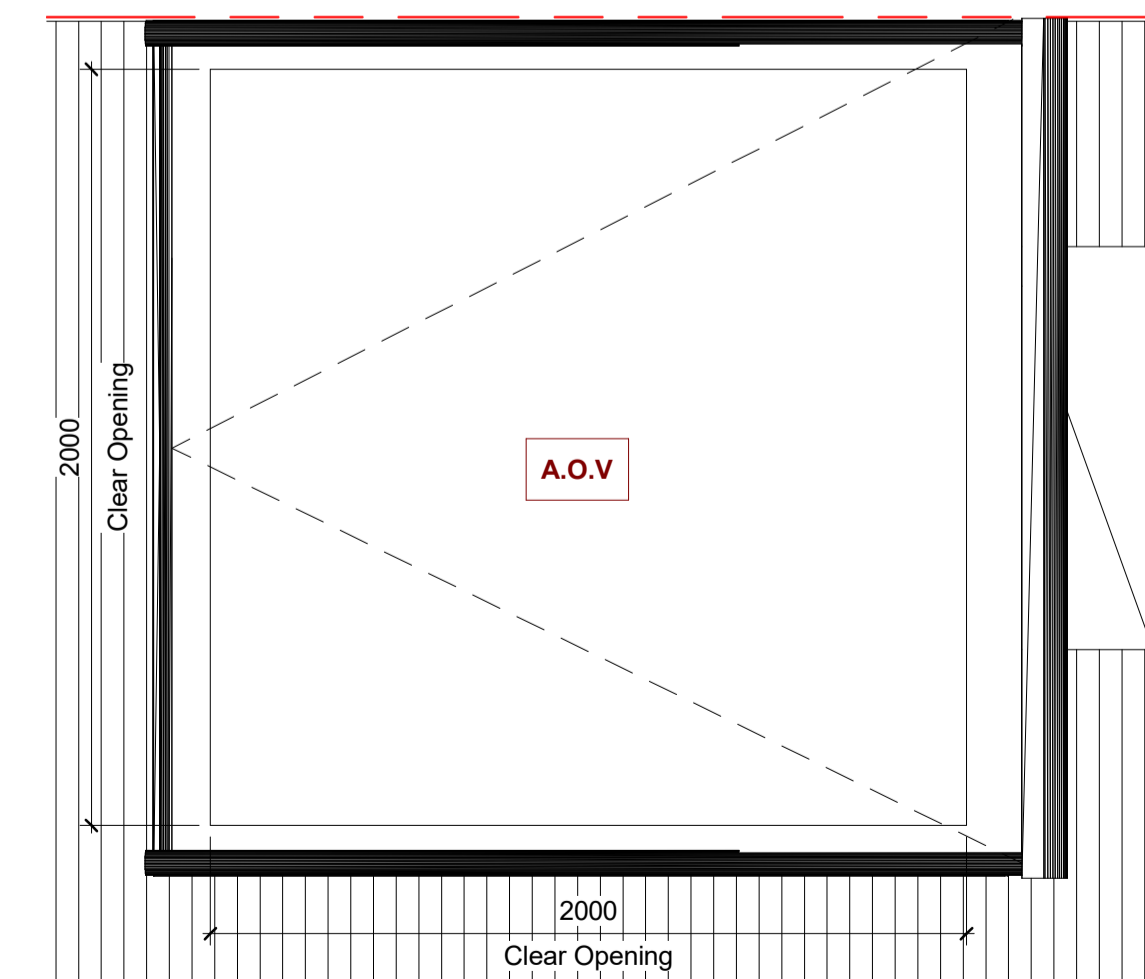
9 WIN-05 Elevation  
1 : 20



10 WIN-05 Plan  
1 : 20



11 WIN-06 Section  
1 : 20



12 WIN-06 Plan  
1 : 20

Read in conjunction with Drawing 18STU-6301

Note: Revision clouds colours  
 ○ Denotes 'changed / Revised' information  
 ○ Denotes 'On hold / In abeyance' information

**PRINT IN COLOUR**

Project Stage  
**[3] Spatial Design**

Client  
**Elleric LTD**

Project  
**18STU**

Title  
**Window schedule and detailed drawings**

REV	DATE	PURPOSE	BY
3-00	30.03.2022	Initial Design	MH
3-01	16.06.2022	Tender Design	MH
3-02	25.08.2022	GA's Update	MH
3-03	06.09.2022	GA's Update	MH
3-04	29.12.2022	Design Coordination	MH

Drawing No. **18STU-7201** Rev. **3-04**

Project No. **123** Scale **1 : 20 @ A1 1 : 40 @ A3**  
 Drawn **MH** Checked **MH** Date **06/17/22**

Do not scale from this drawing. All dimensions should be checked and confirmed on site before the commencement of work. All discrepancies must be reported. Subcontractors must verify all dimensions on site before making a shop drawing or commencing manufacturing. This drawing is subject to copyright. ©

**twelve forty one**  
 twelve forty one limited  
 1 Mentmore Terrace  
 London E8 3PN  
 t: +44. 07877261384  
 +44.07848168101  
 e: office@twelvefortyone.co.uk