



THE
OLD BULL
& BUSH

PLANNING

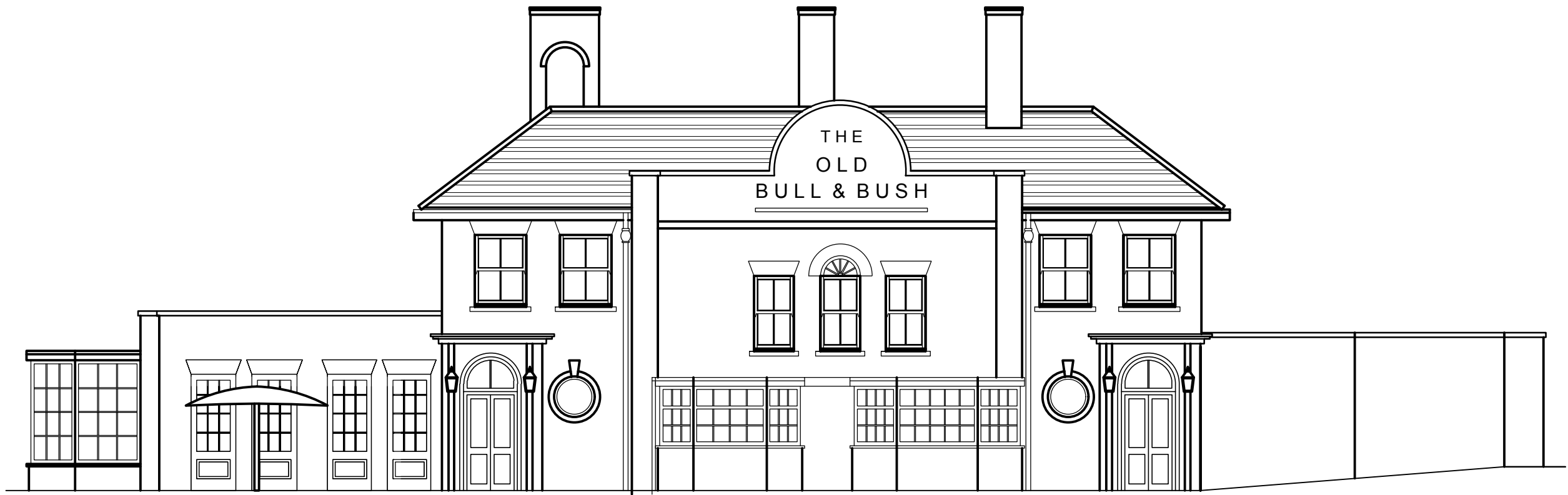


SIGNAGE PROPOSAL

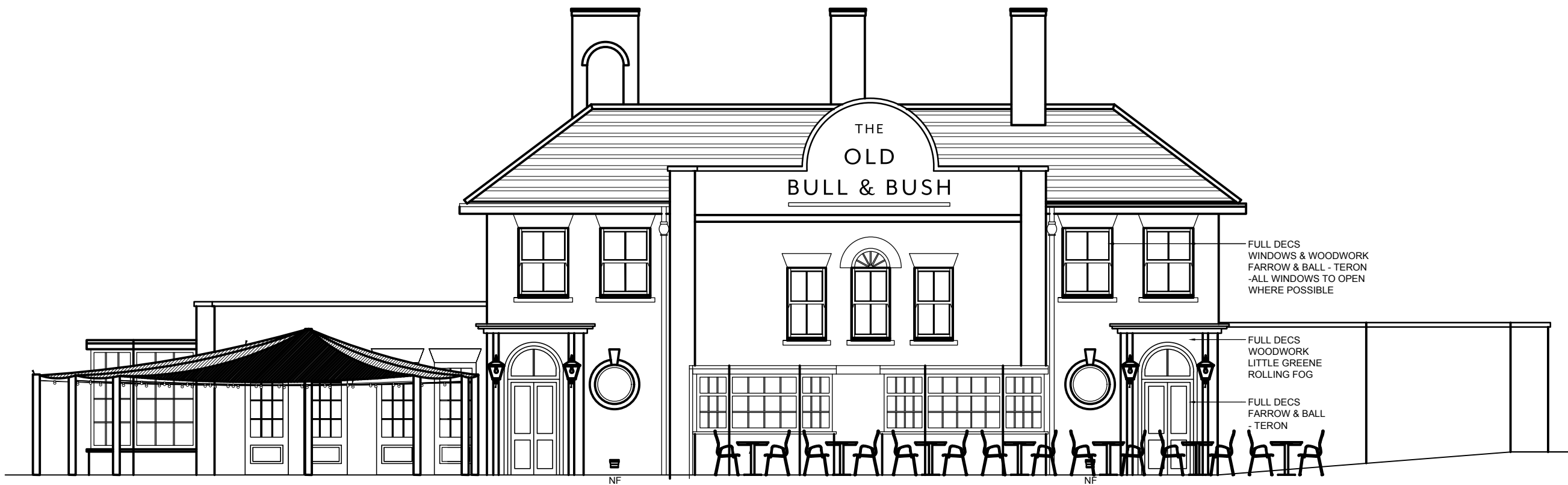
Date: 19.12.22

Client: M&B PCP | Drawn By: LA/JG

The Old Bull & Bush, North End Way, London, Greater London, NW3 7HE



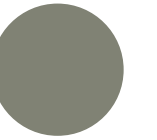
ELEVATION TO NORTH END WAY
EXISTING ELEVATION
 Scale: 1:100



ELEVATION TO NORTH END WAY
PROPOSED ELEVATION
 Scale: 1:100



Woodwork
LITTLE GREENE
ROLLING FOG



Windows & Woodwork
FARROW & BALL
TERON





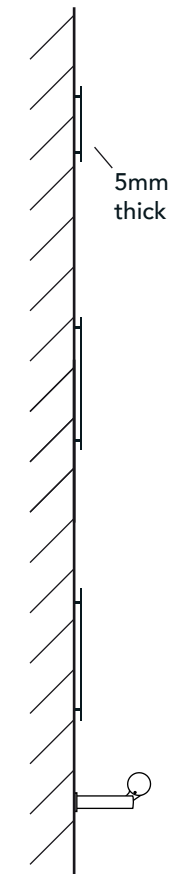
Weathered Antique Nickel Finish

ITEM 1. (1 off)

Illuminated post sign with a 'Weathered Antique Nickel' metal finish. with aluminium letters and logo powdercoated white.

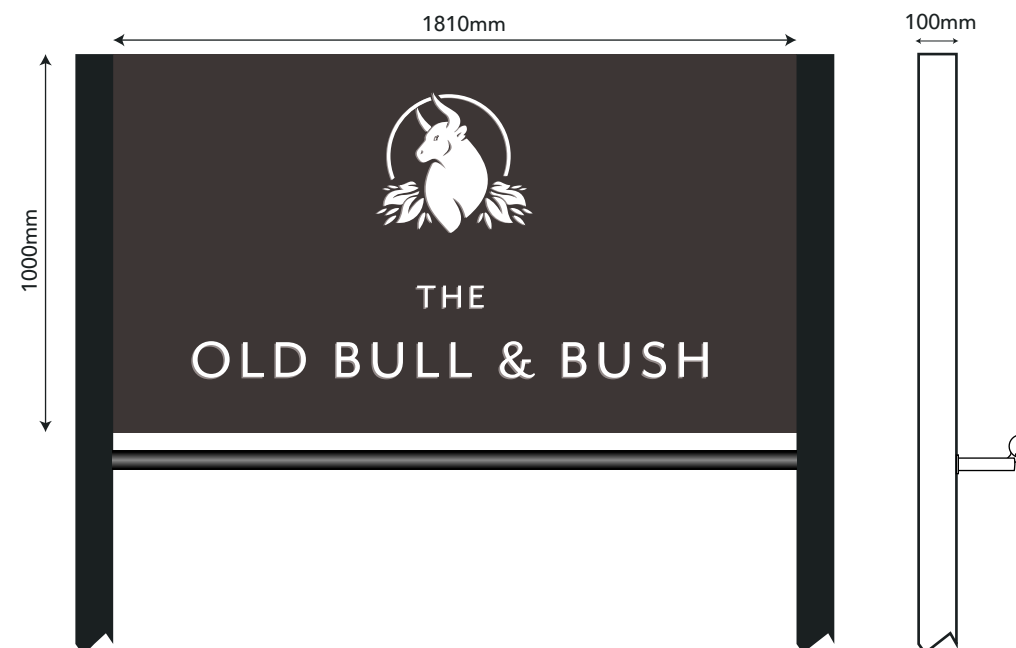
Mounted to timber post with metal detail to side.

Scale 1:10 @ A3
Max letter height: 84mm
AGL: 4550mm



ITEM 2. (1 off)
Individual letters on pins powdercoated RAL 9001.
Illumination to be provided by an
LED trough light below

Scale 1:20 @ A3
Max letter height: 350mm
AGL: 6150mm



ITEM 3 (1 off)
- Aluminium tray panel with a back tray powdercoated RAL 8019
Complete with aluminium logo and
letters coated White, bonded to the face.

- Mounted between 2 x EXISTING steel posts
*MAIN CONTRACTOR TO PAINT BLACK

- 1 x LED trough light below.

Scale 1:20 @ A3
Max letter height: 96mm
AGL: 1880mm

