



01. Garden wall with No. 14 removed to view West Elevation.



02. Garden Shed view from terrace.

The design principle adopted for the garden room and landscape has been to create a softer landscape retaining the existing trees and bushes, and soft borders to create a small-scale bio-diverse garden that encourages local wildlife related to a "garden bothy". At all times the design has been guided by both the Hampstead Conservation Area Appraisal 2001 and CPG Home Improvements 2021's garden section on landscaping, boundary treatments and outbuildings.

The Garden Room has therefore been designed to have a humble 'shed like' quality at the end of the garden with a rustic material palette of Larch shingle roof and weatherboarded sides.

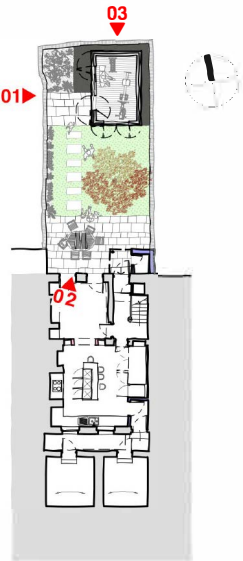
The traditional shed form is situated carefully to avoid established planting with its gable end towards the rear of the staircase area of the main house. This arrangement reveals, to the main rooms of the house, the greater depth of the garden.

To minimize its impact on the ground and ecology the proposed Garden Room has a timber frame structure with a mini bore pile foundation and typical pitched roofs the drain rainwater directly into the permeable gravel base. Addressing CPG Amenity 2021, our proposal strives to avoid creating negative privacy and light polluting issues within this relatively confined collection of rear gardens and ensure the 'depths of the garden should be dark' when the amenity is used after sunset. This is achieved by covering the windows with a screen of louvered doors that can be folded back during the day and closed at night to reduce light pollution and improve the building's thermal performance.

These design considerations all combine to reinforce and retain a sense of a traditional garden structure, while limiting the impact of the new Garden Room on the character of the back gardens in the Hampstead Conservation Area.



03. Interior view of proposed Garden Shed.



Key plan