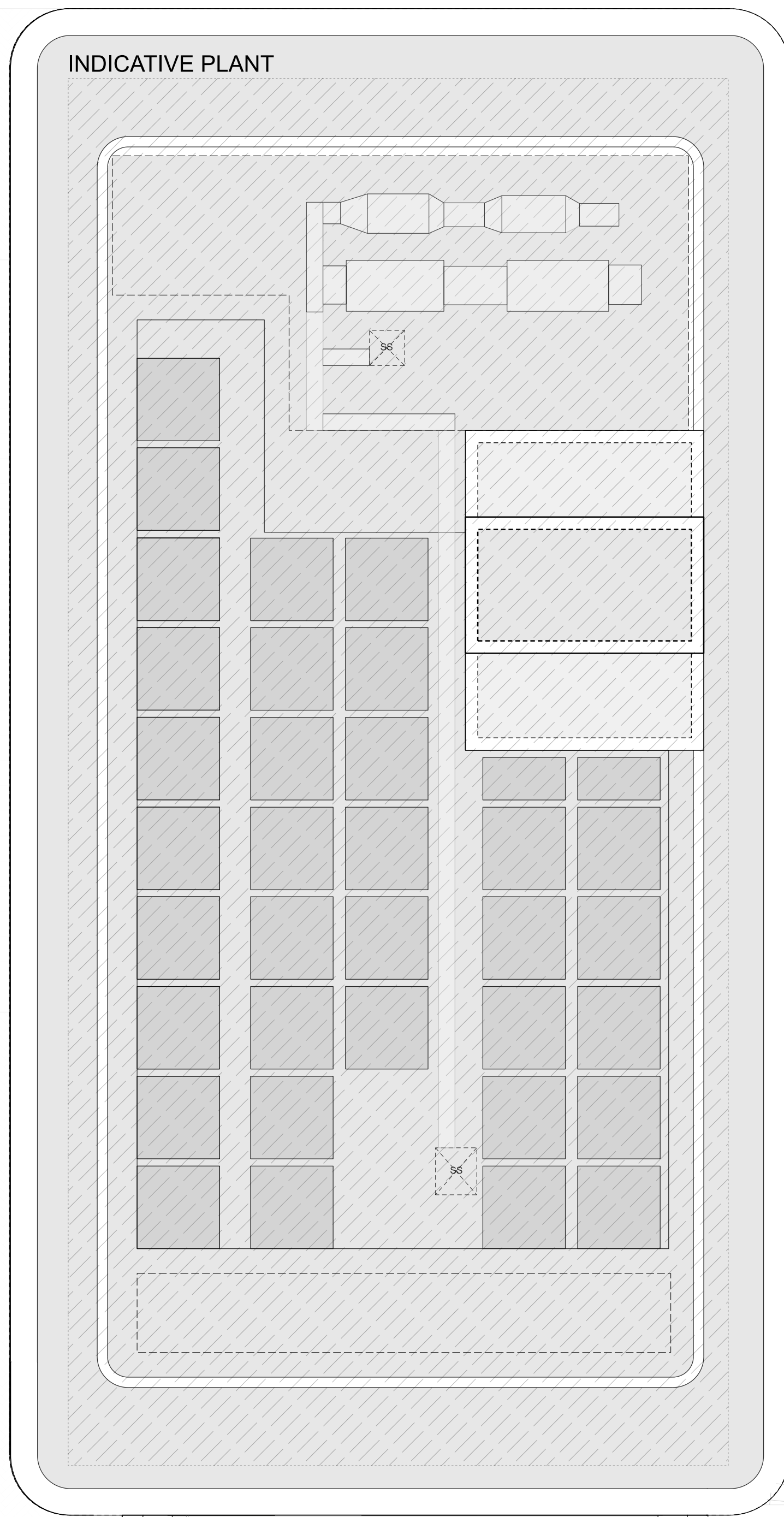


KEY
 WHEELCHAIR ACCESSIBLE FLAT

UNIT LABEL KEY:

Unit	Level	Core	Plot
Unit Identification:	NS-E-XX-XX		
Occupancy:	Xb/Xp		
Unit Area:	XX Sq.m		

PLEASE NOTE:
 The internal layouts within the apartments and houses will be subject to design development. The precise locations of walls and internal doors, and the detailed layout of the bathroom and kitchen areas will be the subject of non-material changes and may vary from the internal layouts set out in these plans. These minor alterations will not affect the position and arrangement of external doors and windows nor will they affect the relative relationship between habitable rooms and windows.
 Pressurisation plant, ASHPs and photovoltaic cells are shown indicatively, precise locations and sizing of these will be subject to design development.



NS-A-14-01
 1B/2P WCA
 66 Sq.m



NS-A-14-02
 2B/3P WCA
 77 Sq.m

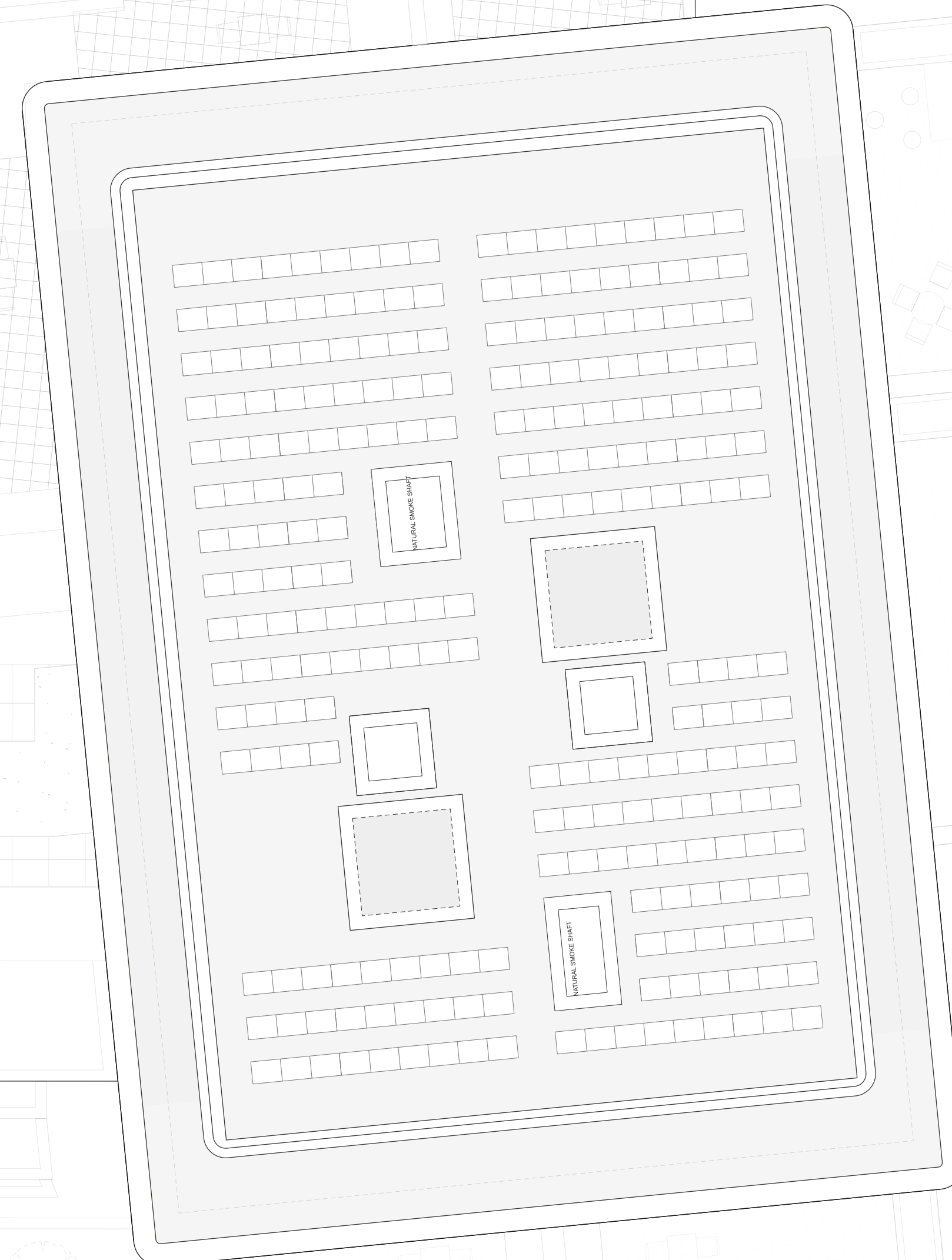
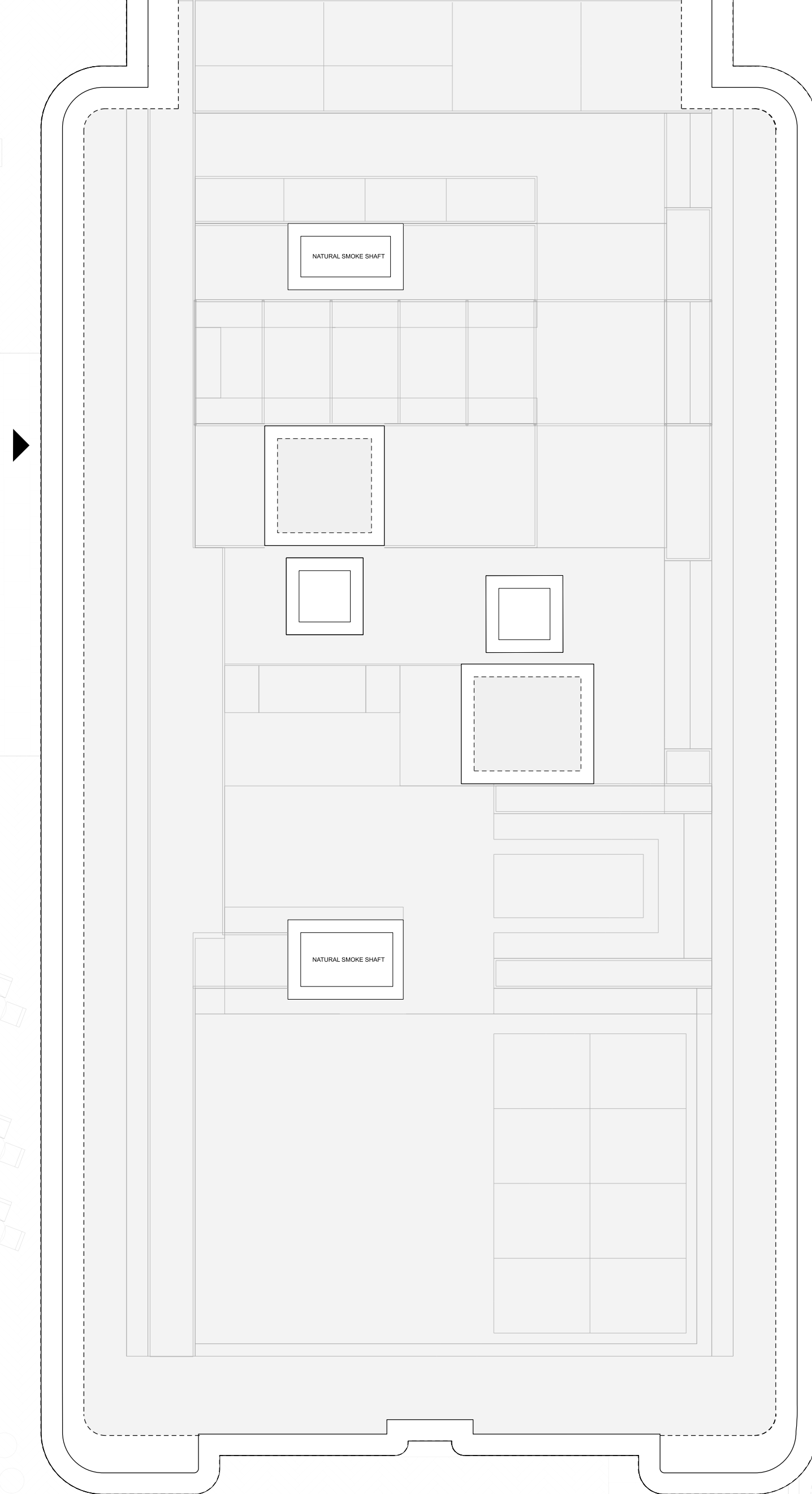
NS-A-14-03
 1B/2P
 51 Sq.m

NS-A-14-04
 1B/2P
 50 Sq.m

NS-A-14-05
 2B/3P
 62 Sq.m

NS-A-14-07
 STUDIO
 39 Sq.m

NS-A-14-06
 2B/3P
 64 Sq.m

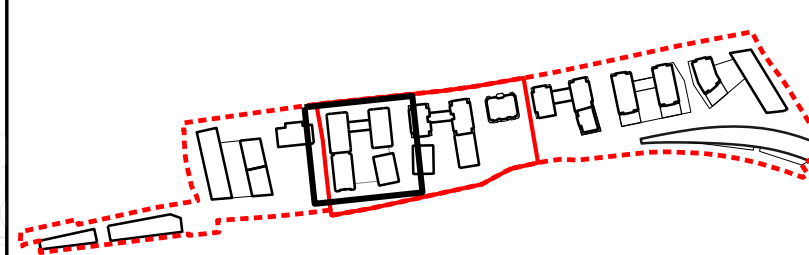


P03	10/02/23	UPDATED ISSUE FOR PLANNING
P02	09/02/22	UPDATED ISSUE FOR PLANNING
P01	28/01/22	ISSUED FOR PLANNING

REV	DATE
-----	------

NOTE
 When this drawing is issued in uncontrolled CAD format it will be accompanied by a PDF version and is issued to enable the resident to prepare their own documents / models / drawings for which they are solely responsible.
 The resident should report all drawing errors, omissions and discrepancies to the architect. All dimensions should be checked on site by the contractor and such dimensions shall be the contractor's responsibility.
 Allford Hall Monaghan Morris Limited accepts no responsibility or liability for any use of this drawing by parties other than the party for whom it was prepared or for purposes other than those for which it was prepared.
 Any alterations or additions to or discrepancies arising out of changes to the background information on which the drawings are based that was current at the time of issue, and which occur to that information after it has been issued by AHMM - any loss or degradation of the information held in this drawing resulting from the translation from the original file format to any other file format or from the recipient's handling of it or any other programme or any version of the programme other than that which was used to prepare it.
 The accuracy of any information provided by others or for any costs, claims, proceedings and expenses arising out of reliance on such information - any scaling from this drawing other than by the local planning authority solely for the purposes of the planning application to which it relates.

LOCATION



ALLFORD HALL MONAGHAN MORRIS
 ARCHITECTS LLP
 MORELANDS, 5-23 OLD STREET LONDON EC1V 9RL
 TEL: 020 7251 5261 FAX: 020 7251 5123 WEB: WWW.AHMM.CO.UK

Project: O2 MASTERPLAN SITE
 Drawing title / location: PLOT N5 PROPOSED LEVEL 14 PLAN

Drawn by:	Checked by:	Issue:	Date:
TC	RMC	1:100@A0; 1:200@A2	PLANNING
Project:	Zone:	Source:	Classification:
19066	N5	(00)_P114	P03