



01 N4 : WEST ELEVATION

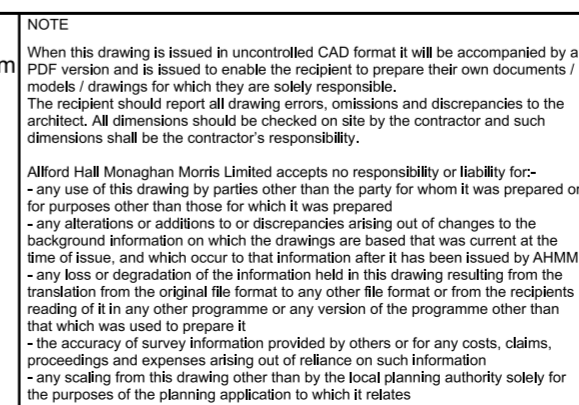
KEY	REV	DATE	DESCRIPTION
01	P01	28/01/22	ISSUED FOR PLANNING
02	P02	09/09/22	UPDATED ISSUE FOR PLANNING
03	P03	16/02/23	UPDATED ISSUE FOR PLANNING

NOTE: MVHR (OR SIMILAR EXTRACT / INTAKE TO BE SUBJECT TO DETAILED DESIGN AND APPROVED UNDER CONDITION.

SCALE
0 1 2 5 10 20m

NOTE
When this drawing is issued in uncontrolled CAD format it will be accompanied by a PDF version and is issued to enable the recipient to prepare their own documents / models / drawings for which they are solely responsible.
The recipient should report all drawing errors, omissions and discrepancies to the architect. All dimensions should be checked on site by the contractor and such dimensions shall be the contractor's responsibility.

Allford Hall Monaghan Morris Limited accepts no responsibility or liability for:-
- any use of this drawing by parties other than the party for whom it was prepared or for purposes other than those for which it was prepared
- any alterations or additions to or discrepancies arising out of changes to the background information on which the drawings are based that was current at the time of issue, and which occur to that information after it has been issued by AHMM
- any loss or degradation of the information held in this drawing resulting from the translation from the original file format to any other file format or from the recipient's reading of it in any other programme or any version of the programme other than that which was used to prepare it
- the accuracy of survey information provided by others or for any costs, claims, proceedings and expenses arising out of reliance on such information
- any scaling from this drawing other than by the local planning authority solely for the purposes of the planning application to which it relates



drawn by	checked	scale	status
FZ	RMC	1:200@A1; 1:400@A3	PLANNING

project	zone	source	classification	drawing no.	revision
19066	N4	(00)_P200	P03		

ALLFORD HALL MONAGHAN MORRIS
ARCHITECTS Ltd
MORELANDS, 5-23 OLD STREET LONDON EC1V 9HL
TEL 020 7251 5261 FAX 020 7251 5123 WEB WWW.AHMM.CO.UK

job title
O2 MASTERPLAN SITE

drawing title / location
**PLOT N4
PROPOSED WEST ELEVATION**