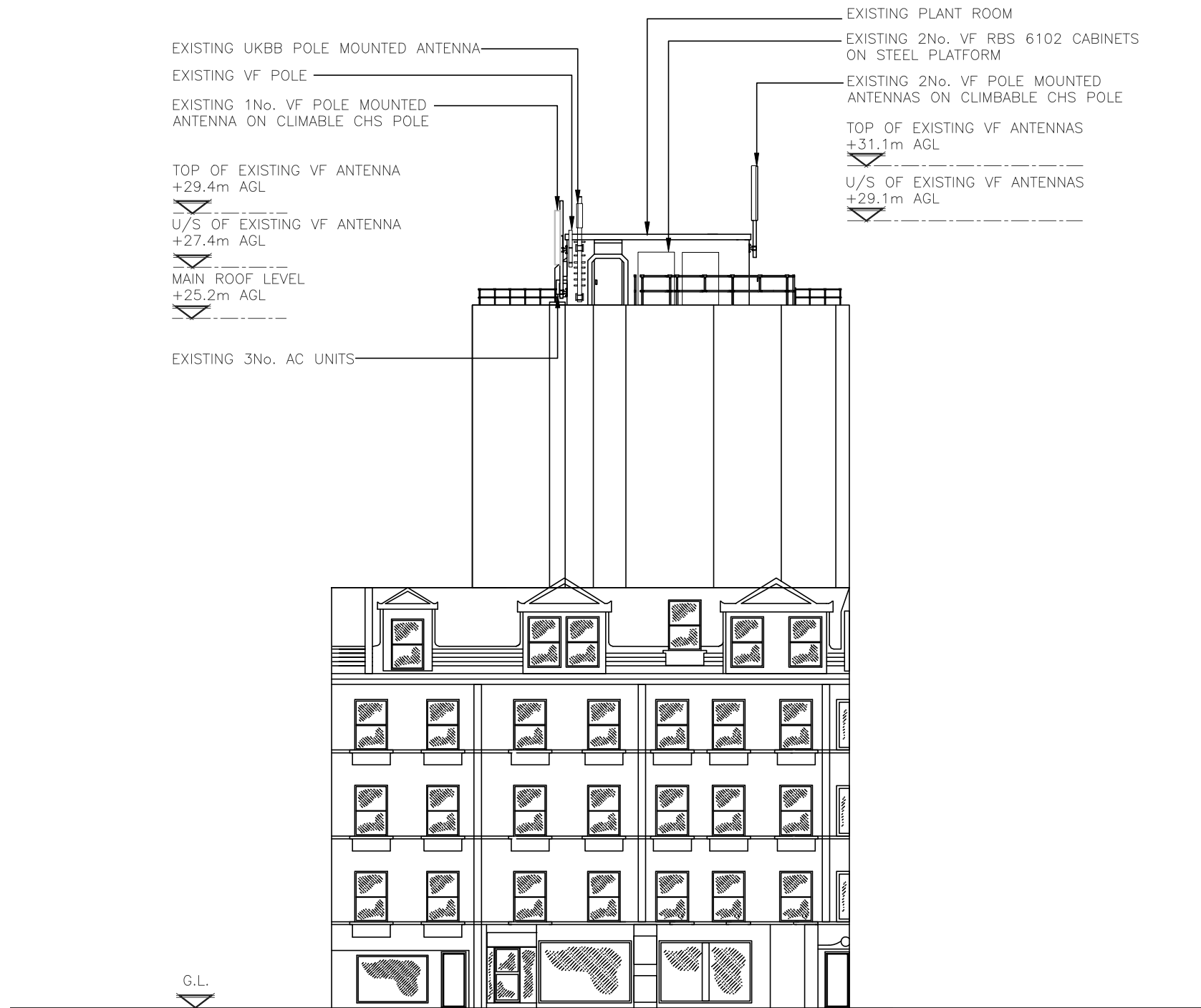


NOTES: DIMENSIONS ARE IN mm UNLESS NOTED OTHERWISE

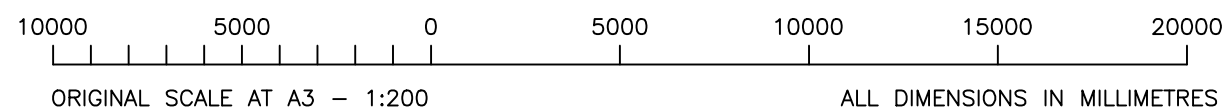
N.G.R E: 530948 N: 181597

EXISTING UKBB POLE MOUNTED ANTENNA
 EXISTING VF POLE
 EXISTING 1No. VF POLE MOUNTED ANTENNA ON CLIMBABLE CHS POLE
 TOP OF EXISTING VF ANTENNA +29.4m AGL
 U/S OF EXISTING VF ANTENNA +27.4m AGL
 MAIN ROOF LEVEL +25.2m AGL
 EXISTING 3No. AC UNITS

EXISTING PLANT ROOM
 EXISTING 2No. VF RBS 6102 CABINETS ON STEEL PLATFORM
 EXISTING 2No. VF POLE MOUNTED ANTENNAS ON CLIMBABLE CHS POLE
 TOP OF EXISTING VF ANTENNAS +31.1m AGL
 U/S OF EXISTING VF ANTENNAS +29.1m AGL



EXISTING EAST ELEVATION
(1:200)



REV	MODIFICATION	BY	CH	DATE
A	Elevation Added	EM	GBC	09.12.22



Great British Communications
 Lapping House, Block 3 Forward Point,
 Tan House Lane, Widnes, Cheshire, W48 0SL
 t. 44 (0)151 420 4128
 www.gbcservices.co.uk



Cell Name		Opt.
DUTCH HOUSE		-
Cell ID No		
CORNERSTONE	VMO2	VF
14458425	080263	36743

Site Address / Contact Details
 307 HIGH HOLBORN
 HOLBORN
 LONDON
 WC1V 7LL

Drawing Title: EXISTING EAST ELEVATION		Dwg Rev:
Purpose of issue: PLANNING		A
Drawing Number: 301		B
Surveyed By: SH	Original Sheet Size: A3	Pack Issue:
Drawn: SPD	Date: 06.04.18	Checked: DS
	Date: 06.04.18	