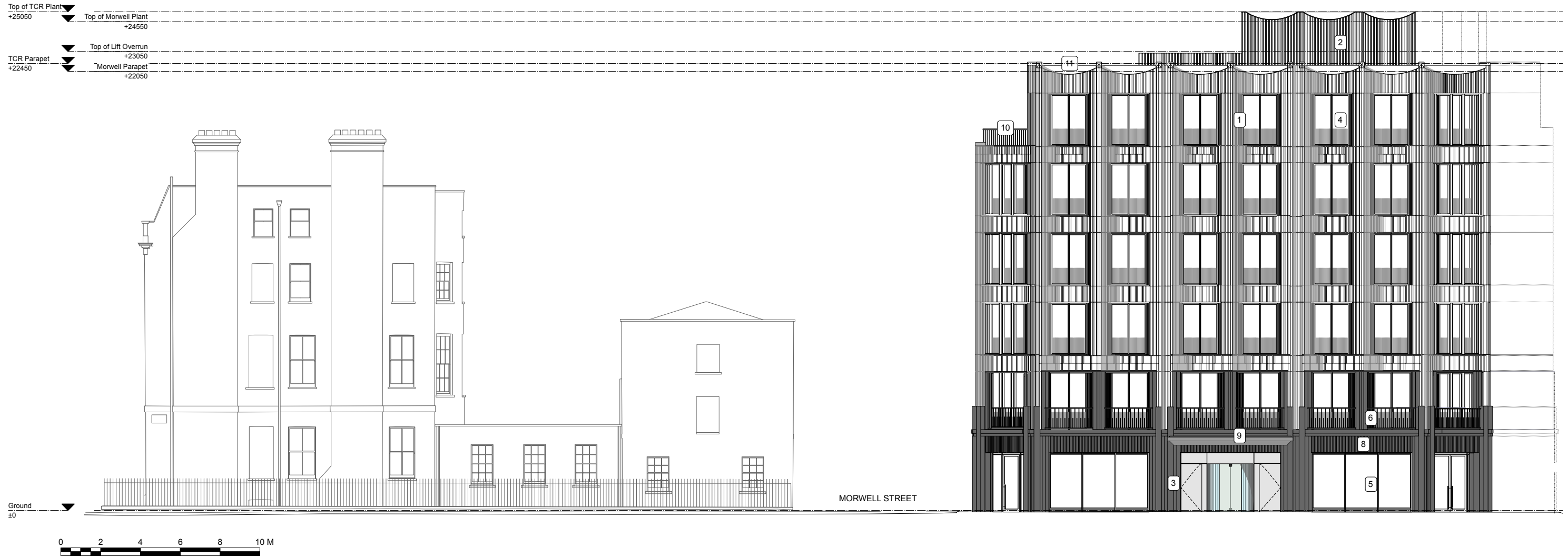


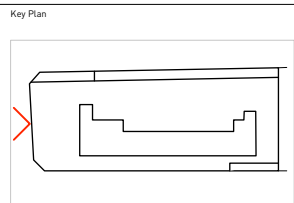
- MATERIALS**
1. GLAZED TERRACOTA CLADDING
 2. PPC METAL PROFILED ROOF PLANT ENCLOSURE
 3. GREY BASALT STONE CLADDING
 4. GREY PPC ALUMINIUM WINDOWS
 5. BLACK PPC ALUMINIUM SHOPFRONT WINDOWS
 6. PPC METAL BALUSTRADE
 7. GREY BUFF NARROW GAUGE BRICKWORK
 8. DARK GREY PPC LOUVERED METAL SCREEN
 9. DARK GREY PPC METAL CANOPY
 10. GREY PPC METAL BALUSTRADE
 11. PPC METAL COPING



2 BAYLEY ST - NORTH ELEVATION
 ST-PL-03-101 SCALE 1:200 @ A3

GENERAL NOTES:
 Do not scale from this drawing.
 Check drawing on receipt and immediately report any discrepancies to the Architect. Verify all dimensions and levels on site prior to construction.
 The contents of this drawing are Stiff + Trevillion Architects Ltd copyright and shall not be re-used without their written permission.

Revisions		Approved
Rev.	Date	Note
A	05/11/20	Fitting added to windows
B	20/01/23	Facade/parapet/escape-cycle-office entrance doors/ ukgn louvres updates



Stiff + Trevillion

Stiff + Trevillion Architects Ltd
 16 Woodfield Road
 London W9 2BE

T +44(0)20 8960 5550
 mail@stiffandtrevillion.com
 www.stiffandtrevillion.com

Client
 M&G Fitzrovia nominee 1 Ltd &
 M&G Fitzrovia nominee 2 Ltd

Project No. 4486 Project 247 Tottenham Court Road,
 W1T 7QZ

Drawing Title
 Bayley Street
 North Elevation

Drawing Status
PLANNING

Date MAR 2022 Scale @ A1 1:100 Scale @ A3 1:200

Drawing No.
 ST-PL-03-101

Revision
B