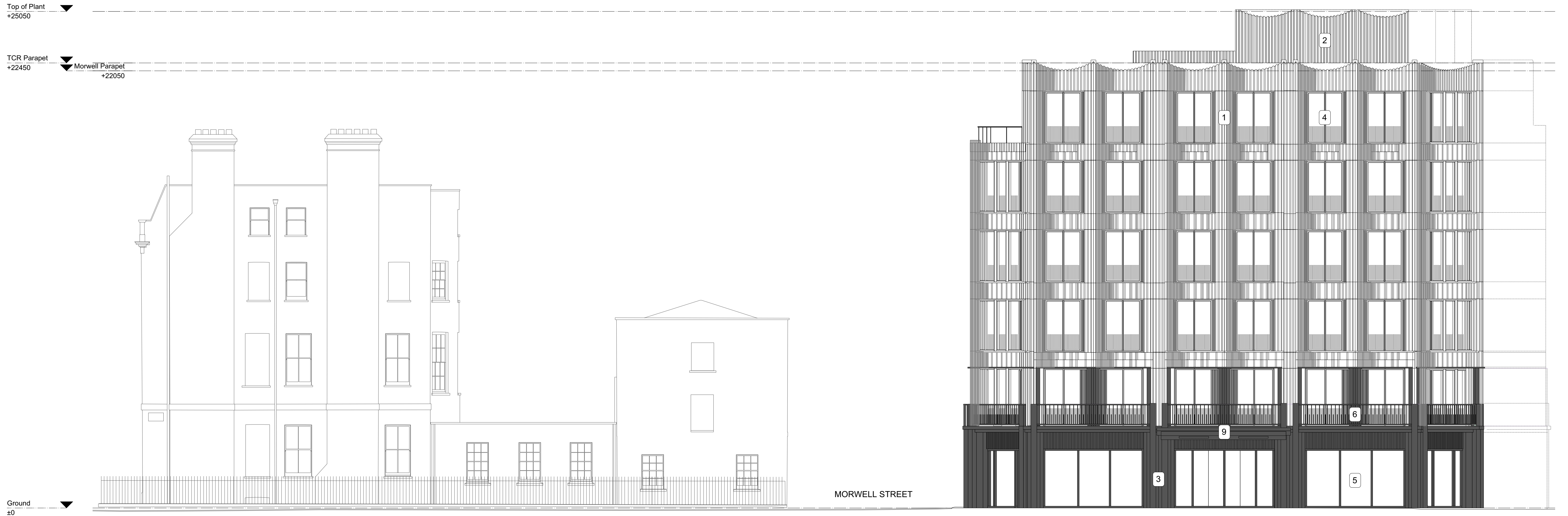


- MATERIALS**
1. GLAZED TERRACOTTA TILE
 2. PPC METAL SCALLOPED LOUVRED ROOF PLANT ENCLOSURE
 3. GREY BASALT STONE CLADDING
 4. GREY PPC ALUMINIUM WINDOWS WITH SIDE VENTS
 5. BLACK PPC ALUMINIUM SHOPFRONT WINDOWS
 6. STAINLESS STEEL BALUSTRADE
 7. GREY NARROW GAUGE BRICKWORK
 8. DARK GREY PPC METAL LOUVRED SCREEN
 9. DARK GREY PPC METAL CANOPY
 10. GREY PPC METAL BALUSTRADE

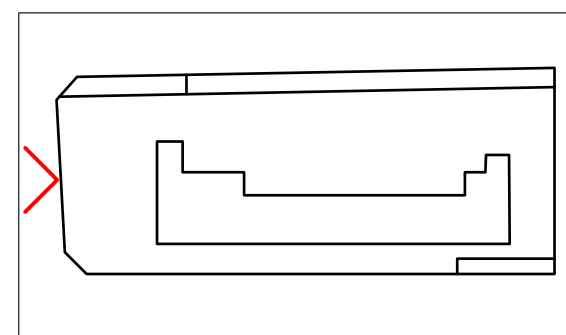


GENERAL NOTES:
 Do not scale from this drawing.
 Check drawing on receipt and immediately report any discrepancies to the Architect.
 Verify all dimensions and levels on site prior to construction.
 The contents of this drawing are Stiff + Trevillion Architects Ltd copyright and shall not be re-used without their written permission.

Revisions		
Rev	Date	Note
A	05/11/2020	FRITTING ADDED TO WINDOWS

Approved

Key Plan



Stiff + Trevillion

Stiff + Trevillion Architects Ltd
 16 Woodfield Road
 London W9 2BE

T +44(0)20 8960 5550
 mail@stiffandtrevillion.com
 www.stiffandtrevillion.com

Client
 Prudential UK Real Estate Nominee 1 Ltd &
 Prudential Real Estate Nominee 2 Ltd

Project No. 4486 Project 247 Tottenham Court Road,
 W1T 7QZ

Drawing Title
 Bayley Street
 North Elevation

Drawing Status
PLANNING

Date 04.11.20 Scale @ A1 1:100 Scale @ A3 1:200

Drawing No.
 PR-ST-03-101

Revision
 A

APPROVED