

**GENERAL NOTES:**

Planning Boundary shown is intended to align with proposed West End Project kerb extents along High Hoborn. Post-submission amendment to as-built kerb line may be required.

The internal layouts within office floor space, residential apartments and ancillary areas of buildings are indicative and will be subject to design development.

The precise location of walls, internal doors, columns, risers and the detailed layout of office, bathroom and kitchen areas will be the subject of non-material changes and may vary from the internal layouts set out in these plans.

These minor alterations will not affect the position and arrangements of external doors and windows nor will they affect the relative relationship between habitable rooms and windows.

Landscape proposals are indicative only, refer to Landscape drawings for details.

Plant layouts are indicative only.

All materials shown or highlighted are indicative only and may be subject to changes made during detailed design development.

Museum Street landscape proposals are indicative.

B 01.02.23 IM Issued For Planning Addendum  
A 01.06.22 IM Issued For Planning Addendum  
- 22.03.21 IM Issued for Planning

# PLANNING

rev	date	author / check	comments
-----	------	----------------	----------

**DSDHA**  
357 Kennington Lane London SE11 5QY  
T 020 7703 3555  
F 020 7703 3890  
E info@dsdha.co.uk  
W www.dsdha.co.uk

project  
**Museum Street and West Central Street**

London, WC1A 1JR

drawing title

1MS Proposed Section AA and BB

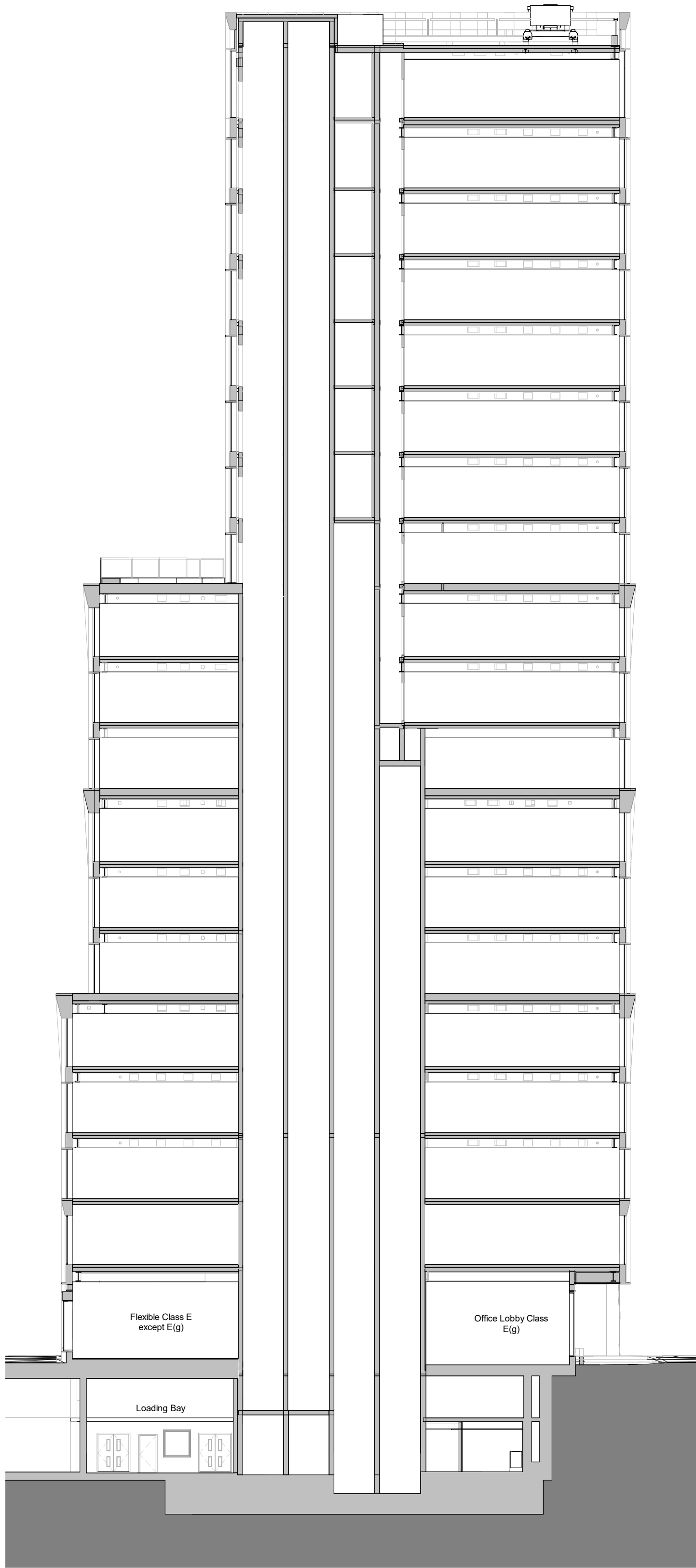
drawn	size	date	scale
MC	A1	02/01/21	1 : 200
drawing number			revision

295A\_P40.101

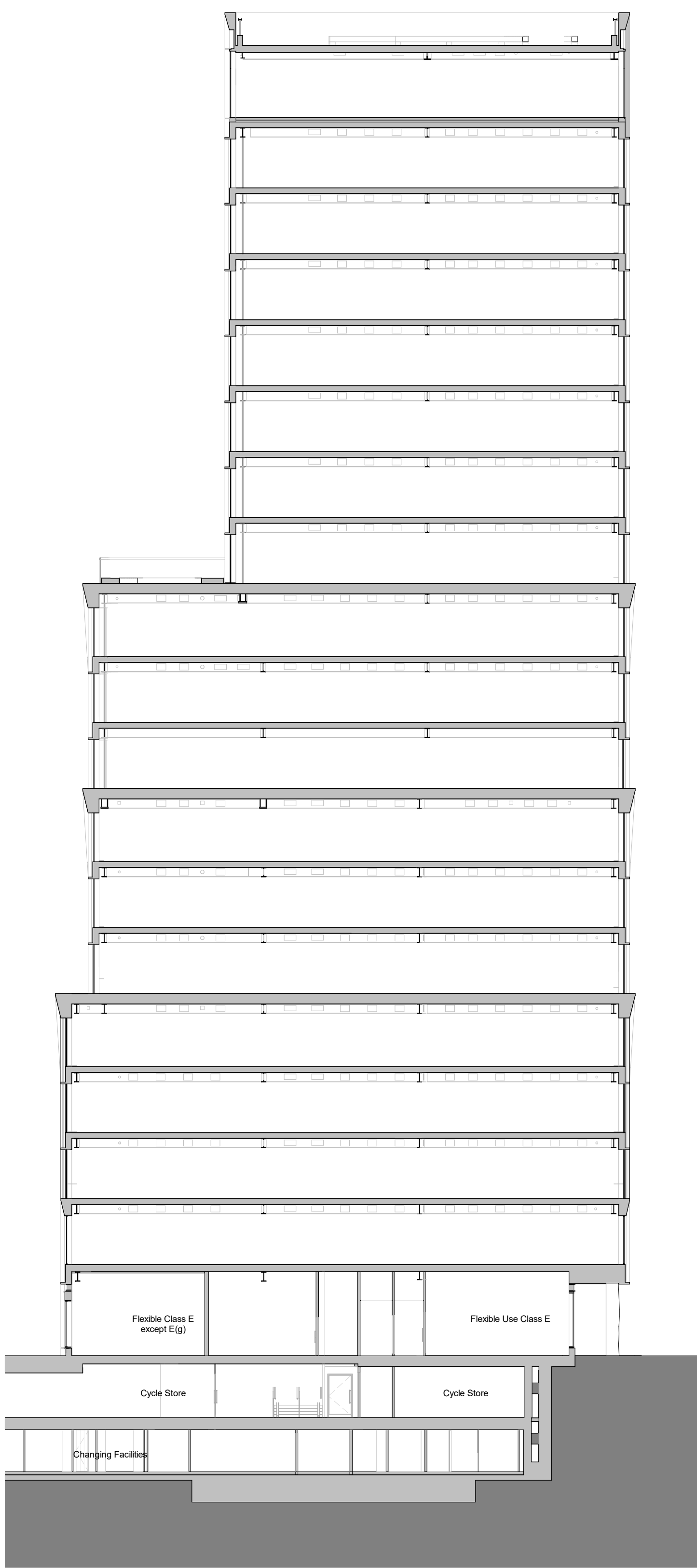
B

REPORT DISCREPANCIES  
DO NOT SCALE FROM THIS DRAWING  
COPYRIGHT DSDHA

USE LATEST REVISION  
CHECK DIMENSIONS ON SITE



1 1MS Proposed Section AA  
1 : 200



2 1MS Proposed Section BB  
1 : 200

