

GENERAL NOTES:

Planning Boundary shown is intended to align with proposed West End Project kerb extents along High Holborn. Post-submission amendment to as-built kerb line may be required.

The internal layouts within office floor space, residential apartments and ancillary areas of buildings are indicative and will be subject to design development.

The precise location of walls, internal doors, columns, risers and the detailed layout of office, bathroom and kitchen areas will be the subject of non-material changes and may vary from the internal layouts set out in these plans.

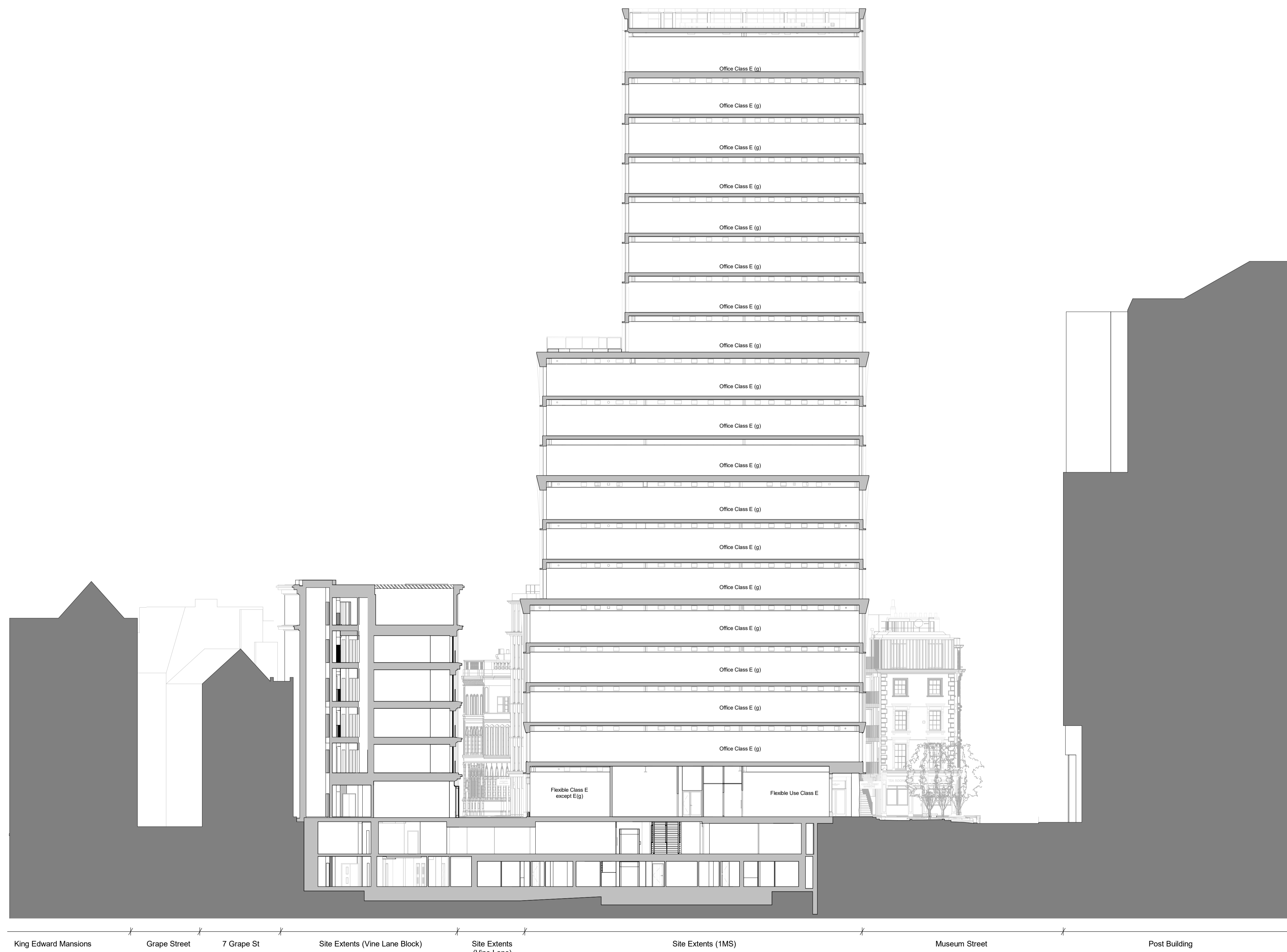
These minor alterations will not affect the position and arrangements of external doors and windows nor will they affect the relative relationship between habitable rooms and windows.

Landscape proposals are indicative only, refer to Landscape drawings for details.

Plant layouts are indicative only.

All materials shown or highlighted are indicative only and may be subject to changes made during detailed design development.

Museum Street landscape proposals are indicative.



1 Proposed Site Section AA
1 : 200

B	01.02.23	IM	Issued For Planning Addendum
A	01.06.22	IM	Issued For Planning Addendum
-	22.03.21	IM	Issued for Planning

PLANNING

DSDHA
357 Kennington Lane London SE11 5QY
T 020 7703 3555
F 020 7703 3890
E info@dshda.co.uk
W www.dshda.co.uk

project
Museum Street and West Central Street

London, WC1A 1JR
drawing title

Proposed Site Section AA

drawn	size	date	scale
DSDHA	A1	28/08/20	1 : 200

drawing number	revision
295_P40.001	B

REPORT DISCREPANCIES DO NOT SCALE FROM THIS DRAWING COPYRIGHT DSDHA

USE LATEST REVISION CHECK DIMENSIONS ON SITE

