

Plan Produced for: Johnson Hatton Office Unit Trust

Date Produced: 01 Apr 2022

Plan Reference Number: TQRQM22091114738314

Scale: 1:1250 @ A4

© Crown copyright and database rights 2021 OS 100042766



Scale 1:1250 @ A3

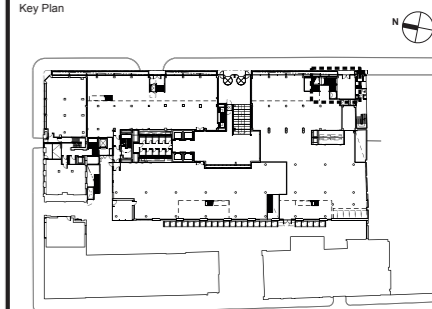


- Notes**
- All dimensions in mm unless otherwise stated.
 - This drawing is to be read in conjunction with all relevant architects and engineers drawings, the specification for the works and any other specialist drawings.
 - All details are for technical intent purposes only - contractor to undertake full site technical survey to confirm all sizes, fixing details and access requirements on site. Any discrepancies are to be notified to the consultant prior to fabrication.
 - Contractor must submit production shop drawings for consultant review/comment prior to fabrication.
 - Sign contractor to calculate and determine structural loadings for all elements in accordance with site specific conditions.

Key
 Site Boundary —
 Ownership Boundary —

Rev	Date	Description
B	24.01.2023	Initial issue
A	08.04.2022	Initial issue

Key Plan



Project
10432 - Johnson Gardens

Client
Johnson Hatton Office Unit Trust
 11-15 Seaton Place
 St Helier
 Jersey
 JE4 0QH

Consultant
Endpoint Limited
 165 Tower Bridge Road,
 London, SE1 3LW
 +44 (0)20 7089 2670
 wearendpoint.com

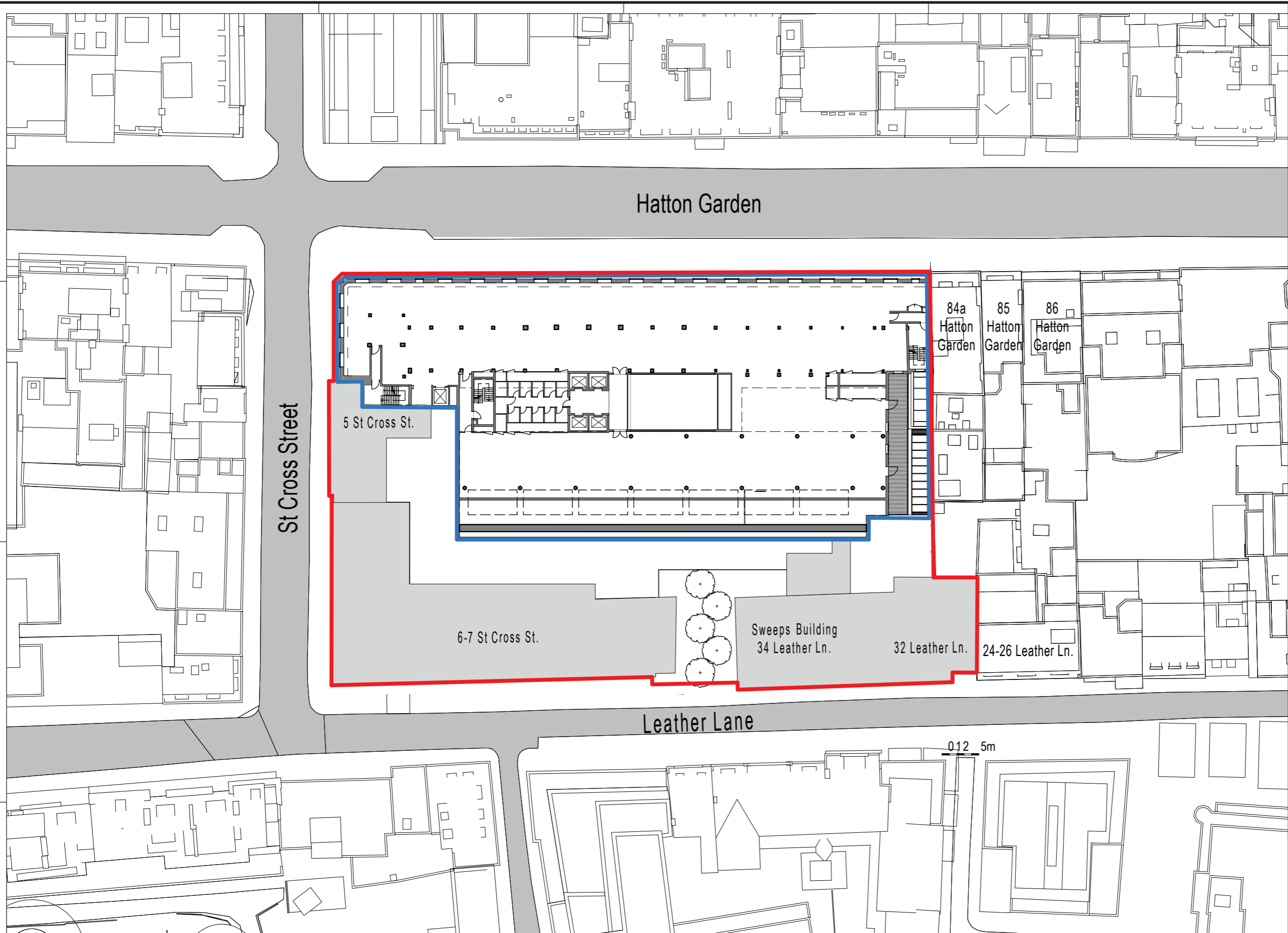


Stage
Advertisement Consent

Drawing Title
Site Plan

Project No.	10487	
Drawn:	OS	
Checked:	CT	
Approved:	GW	
Sheet size:	A3 (420mm x 297mm)	
Scale:	1:1250 @ A3	

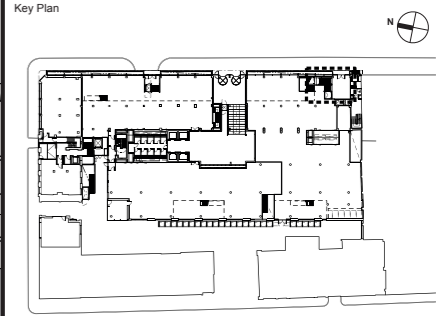
Drawing No.	Sheet	Revision
10432-001	01	A



- Notes**
1. All dimensions in mm unless otherwise stated.
 2. This drawing is to be read in conjunction with all relevant architects and engineers drawings, the specification for the works and any other specialist drawings.
 3. All details are for technical intent purposes only - contractor to undertake full site technical survey to confirm all sizes, fixing details and access requirements on site. Any discrepancies are to be notified to the consultant prior to fabrication.
 4. Contractor must submit production shop drawings for consultant review/comment prior to fabrication.
 5. Sign contractor to calculate and determine structural loadings for all elements in accordance with site specific conditions.

Key
 Ownership Boundary ————
 Johnson Building Site Boundary ————

Rev	Date	Description
B	24.01.2023	Initial issue
A	08.04.2022	Initial issue



Project
10432 - Johnson Gardens

Client
Johnson Hatton Office Unit
 Trust
 11-15 Seaton Place
 St Helier
 Jersey
 JE4 0QH

Consultant
Endpoint Limited
 165 Tower Bridge Road,
 London, SE1 3LW
 +44 (0)20 7089 2670
 wearendpoint.com



Stage
Advertisement Consent

Drawing Title
Site Plan

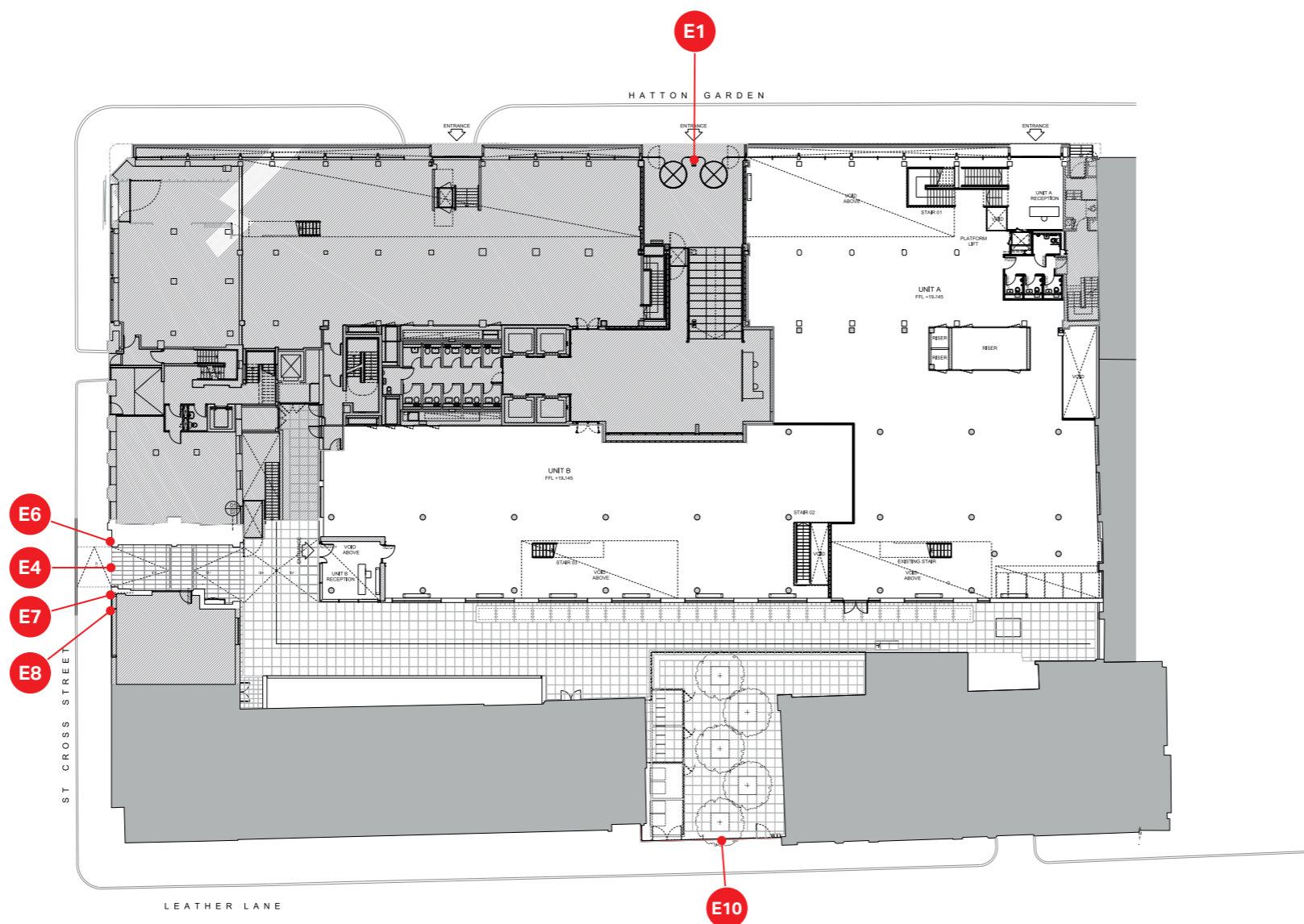
Project No.	10487	
Drawn:	OS	
Checked:	CT	
Approved:	GW	
Sheet size:	A3 (420mm x 297mm)	
Scale:	1:500 @ A3	

Drawing No.	Sheet	Revision
10432-002	01	A



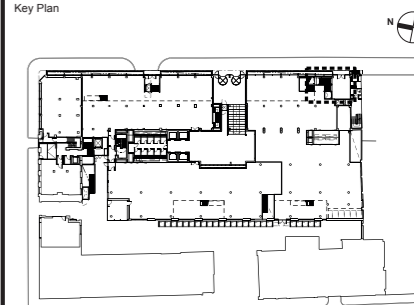
- Notes**
1. All dimensions in mm unless otherwise stated.
 2. This drawing is to be read in conjunction with all relevant architects and engineers drawings, the specification for the works and any other specialist drawings.
 3. All details are for technical intent purposes only - contractor to undertake full site technical survey to confirm all sizes, fixing details and access requirements on site. Any discrepancies are to be notified to the consultant prior to fabrication.
 4. Contractor must submit production shop drawings for consultant review/comment prior to fabrication.
 5. Sign contractor to calculate and determine structural loadings for all elements in accordance with site specific conditions.

Key
Site Demise 



Rev	Date	Description
B	24.01.2023	Initial issue
A	08.04.2022	Initial issue

Key Plan



Project
10432 - Johnson Gardens

Client
Johnson Hatton Office Unit
Trust
11-15 Seaton Place
St Helier
Jersey
JE4 0QH

Consultant
Endpoint Limited
165 Tower Bridge Road,
London, SE1 3LW
+44 (0)20 7089 2670
wearendpoint.com



Stage
Advertisement Consent

Drawing Title
Sign Location Plan

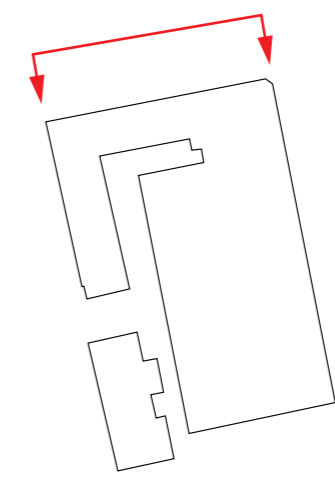
Project No.	10487	
Drawn:	OS	
Checked:	CT	
Approved:	GW	
Sheet size:	A3 (420mm x 297mm)	
Scale:	1:500 @ A3	

Drawing No.	Sheet	Revision
10432-003	01	A

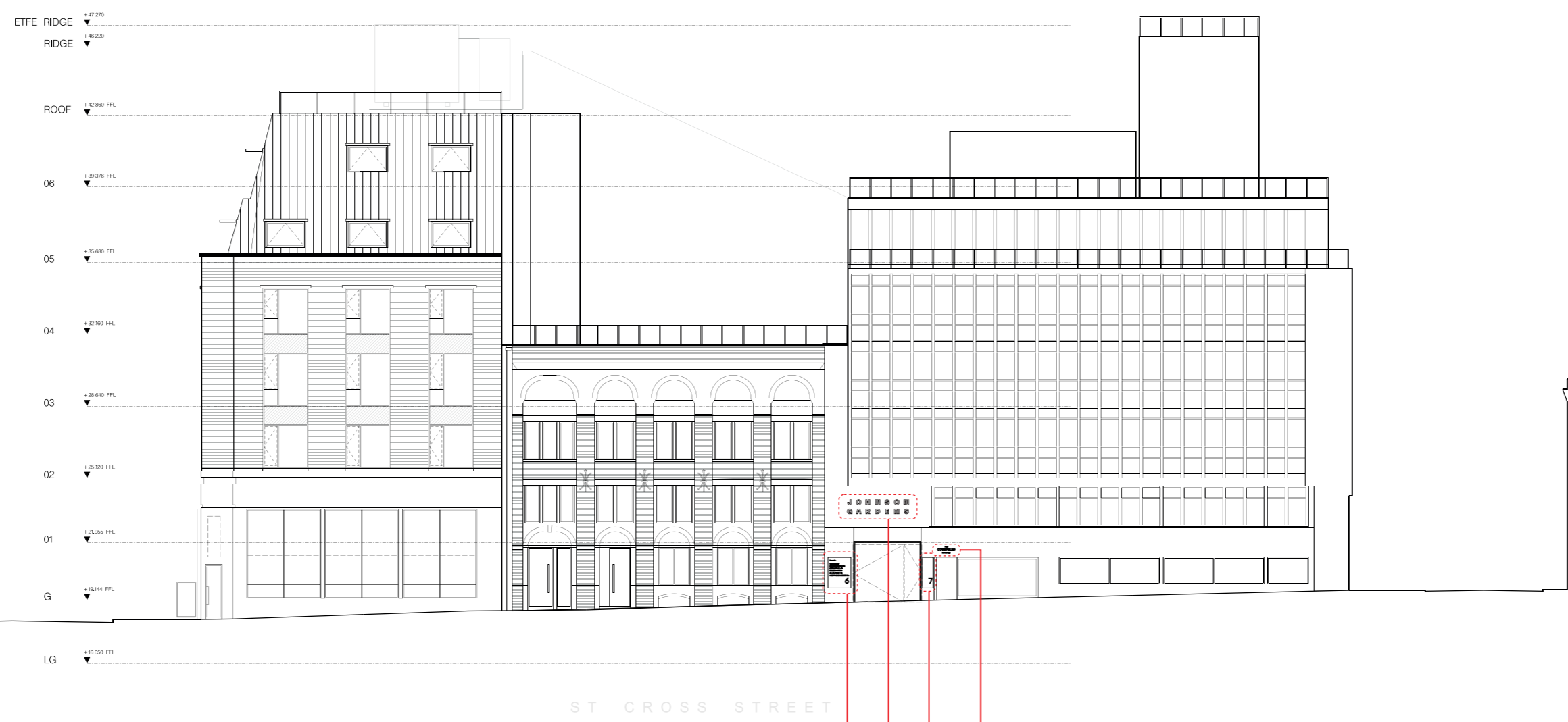


Scale 1:500 @ A3

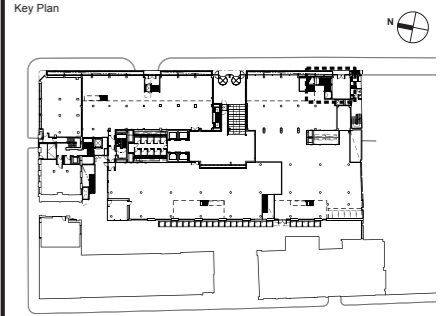
0m 10m 20m 30m 40m 50m



- Notes**
1. All dimensions in mm unless otherwise stated.
 2. This drawing is to be read in conjunction with all relevant architects and engineers drawings, the specification for the works and any other specialist drawings.
 3. All details are for technical intent purposes only - contractor to undertake full site technical survey to confirm all sizes, fixing details and access requirements on site. Any discrepancies are to be notified to the consultant prior to fabrication.
 4. Contractor must submit production shop drawings for consultant review/comment prior to fabrication.
 5. Sign contractor to calculate and determine structural loadings for all elements in accordance with site specific conditions.



Rev	Date	Description
B	24.01.2023	Initial issue
A	08.04.2022	Initial issue



Project
10432 - Johnson Gardens

Client
Johnson Hatton Office Unit Trust
11-15 Seaton Place
St Helier
Jersey
JE4 0QH

Consultant
Endpoint Limited
165 Tower Bridge Road,
London, SE1 3LW
+44 (0)20 7089 2670
weareendpoint.com

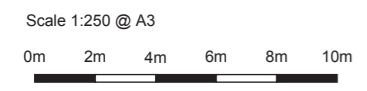


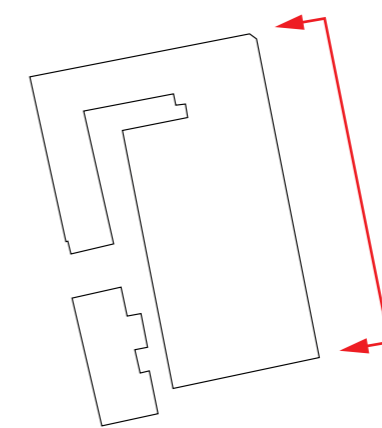
Stage
Advertisement Consent

Drawing Title
North Elevation

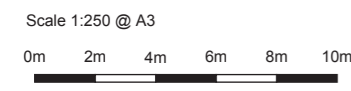
Project No.	10487	
Drawn:	OS	
Checked:	CT	
Approved:	GW	
Sheet size:	A3 (420mm x 297mm)	
Scale:	1:250 @ A3	

Drawing No.	Sheet	Revision
10432-004	01	A

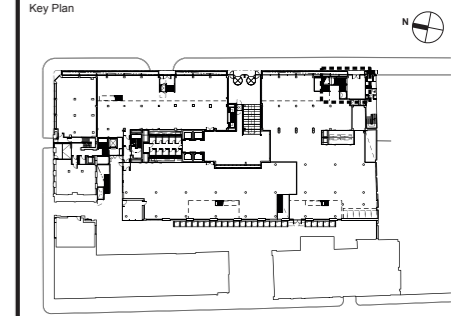




- Notes**
1. All dimensions in mm unless otherwise stated.
 2. This drawing is to be read in conjunction with all relevant architects and engineers drawings, the specification for the works and any other specialist drawings.
 3. All details are for technical intent purposes only - contractor to undertake full site technical survey to confirm all sizes, fixing details and access requirements on site. Any discrepancies are to be notified to the consultant prior to fabrication.
 4. Contractor must submit production shop drawings for consultant review/comment prior to fabrication.
 5. Sign contractor to calculate and determine structural loadings for all elements in accordance with site specific conditions.



Rev	Date	Description
B	24.01.2023	Initial issue
A	08.04.2022	Initial issue



Project
10432 - Johnson Gardens

Client
Johnson Hatton Office Unit
Trust
11-15 Seaton Place
St Helier
Jersey
JE4 0QH

Consultant
Endpoint Limited
165 Tower Bridge Road,
London, SE1 3LW
+44 (0)20 7089 2670
weareendpoint.com

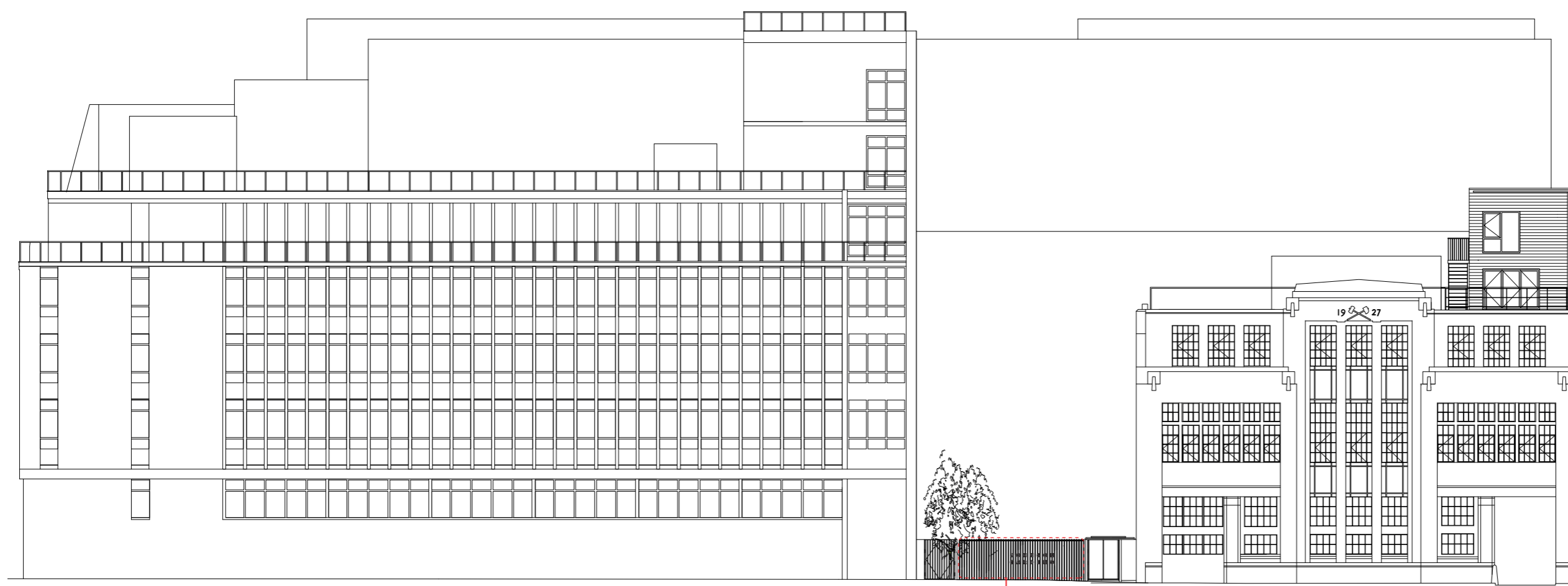
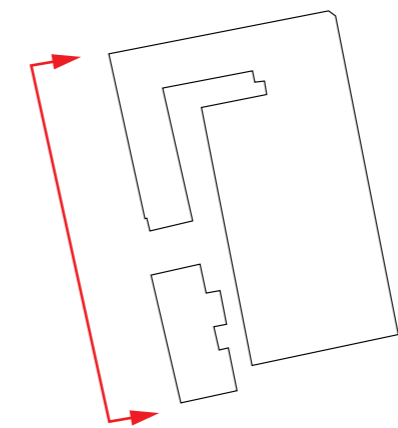


Stage
Advertisement Consent

Drawing Title
East Elevation

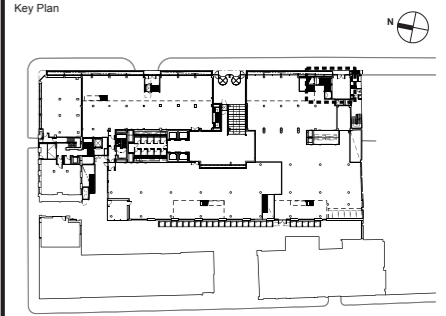
Project No.	10487	
Drawn:	OS	
Checked:	CT	
Approved:	GW	
Sheet size:	A3 (420mm x 297mm)	
Scale:	1:250 @ A3	

Drawing No.	Sheet	Revision
10432-005	01	A



- Notes**
1. All dimensions in mm unless otherwise stated.
 2. This drawing is to be read in conjunction with all relevant architects and engineers drawings, the specification for the works and any other specialist drawings.
 3. All details are for technical intent purposes only - contractor to undertake full site technical survey to confirm all sizes, fixing details and access requirements on site. Any discrepancies are to be notified to the consultant prior to fabrication.
 4. Contractor must submit production shop drawings for consultant review/comment prior to fabrication.
 5. Sign contractor to calculate and determine structural loadings for all elements in accordance with site specific conditions.

Rev	Date	Description
B	24.01.2023	Initial issue
A	08.04.2022	Initial issue



Project
10432 - Johnson Gardens

Client
Johnson Hatton Office Unit
Trust
11-15 Seaton Place
St Helier
Jersey
JE4 0QH

Consultant
Endpoint Limited
165 Tower Bridge Road,
London, SE1 3LW
+44 (0)20 7089 2670
wearendpoint.com



Stage
Advertisement Consent

Drawing Title
West Elevation

Project No.	10487	
Drawn:	OS	
Checked:	CT	
Approved:	GW	
Sheet size:	A3 (420mm x 297mm)	
Scale:	1:250 @ A3	

Drawing No.	Sheet	Revision
10432-006	01	A

Scale 1:250 @ A3
0m 2m 4m 6m 8m 10m

E1



J O H N S O N G A R D E N S

Individual Illuminated Letters

E1 Size: 7840mm x 290mm x 60mm
E1 Height to underside: 3270mm
E1 Cap height: 290mm

Specification

Individually face illuminated MBX lettering bonded to rear interior face of glazing with returns painted black. Individual 10mm thick opal acrylic bonded to front exterior face of glazing.

Illumination:

Lettering internally illuminated individually via white LEDs. Mounted internally to glazing.

Quantity

1

New electrical feed required.

Scale 1:50 @ A3

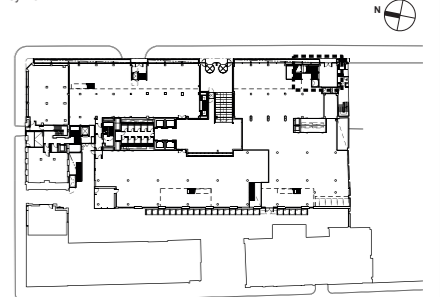


Notes

1. All dimensions in mm unless otherwise stated.
2. This drawing is to be read in conjunction with all relevant architects and engineers drawings, the specification for the works and any other specialist drawings.
3. All details are for technical intent purposes only - contractor to undertake full site technical survey to confirm all sizes, fixing details and access requirements on site. Any discrepancies are to be notified to the consultant prior to fabrication.
4. Contractor must submit production shop drawings for consultant review/comment prior to fabrication.
5. Sign contractor to calculate and determine structural loadings for all elements in accordance with site specific conditions.

Rev	Date	Description
B	24.01.2023	Initial issue
A	08.04.2022	Initial issue

Key Plan



Project
10432 - Johnson Gardens

Client
Johnson Hatton Office Unit
Trust
11-15 Seaton Place
St Helier
Jersey
JE4 0QH

Consultant
Endpoint Limited
165 Tower Bridge Road,
London, SE1 3LW
+44 (0)20 7089 2670
weareendpoint.com



Stage
Advertisement Consent

Drawing Title
Sign Type - E1

Project No.	10487	
Drawn:	OS	
Checked:	CT	
Approved:	GW	
Sheet size:	A3 (420mm x 297mm)	
Scale:	1:50 @ A3	

Drawing No.	Sheet	Revision
10432-007	01	A

- Notes**
1. All dimensions in mm unless otherwise stated.
 2. This drawing is to be read in conjunction with all relevant architects and engineers drawings, the specification for the works and any other specialist drawings.
 3. All details are for technical intent purposes only - contractor to undertake full site technical survey to confirm all sizes, fixing details and access requirements on site. Any discrepancies are to be notified to the consultant prior to fabrication.
 4. Contractor must submit production shop drawings for consultant review/comment prior to fabrication.
 5. Sign contractor to calculate and determine structural loadings for all elements in accordance with site specific conditions.

E4

J O H N S O N
G A R D E N S

Individual Illuminated Letters

E4 Size: 3000mm x 695mm x 15mm
E4 Height to underside: 4000mm
E4 Cap height: 240mm

Specification

Individual opal acrylic lettering bonded to facade.

Illumination:

N/A

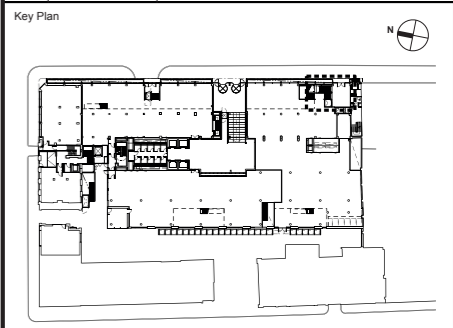
Quantity

1

Scale 1:25 @ A3



Rev	Date	Description
B	24.01.2023	Initial issue
A	08.04.2022	Initial issue



Project
10432 - Johnson Gardens

Client
Johnson Hatton Office Unit
Trust
11-15 Seaton Place
St Helier
Jersey
JE4 0QH

Consultant
Endpoint Limited
165 Tower Bridge Road,
London, SE1 3LW
+44 (0)20 7089 2670
weareendpoint.com



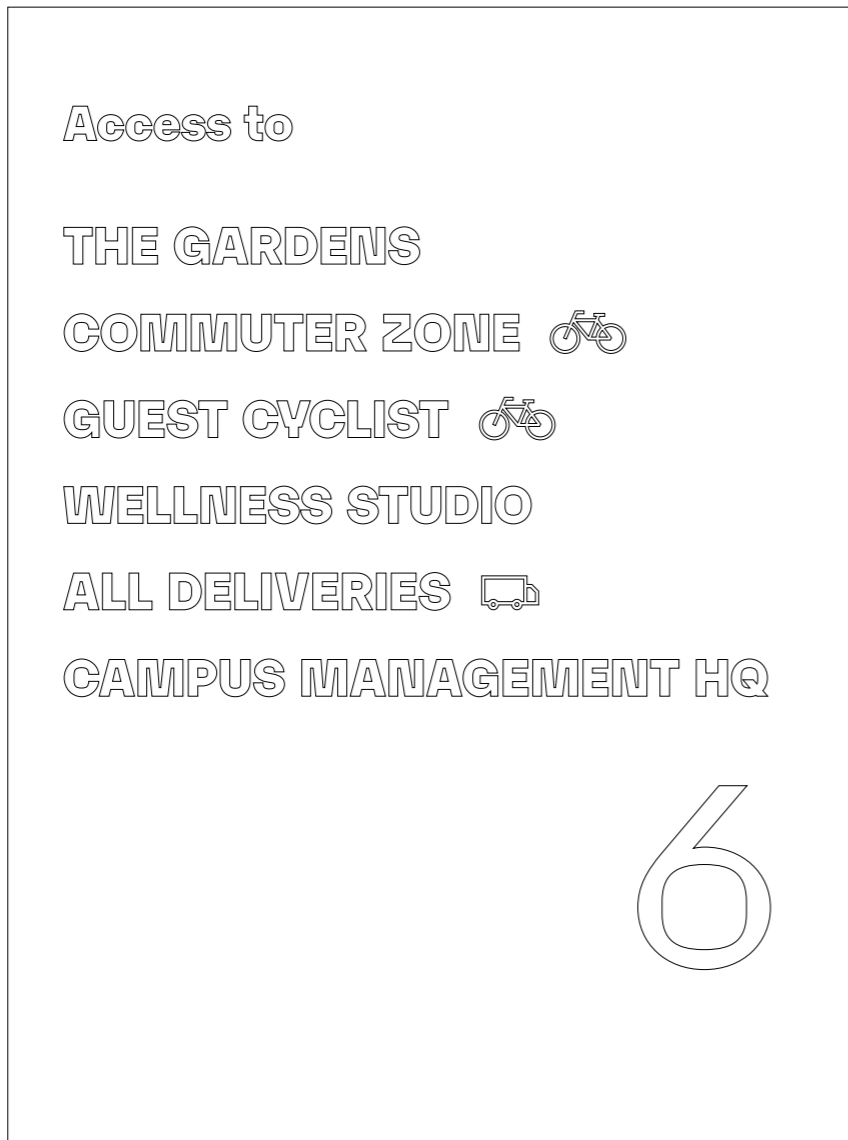
Stage
Advertisement Consent

Drawing Title
Sign Type - E4

Project No.	10487	
Drawn:	OS	
Checked:	CT	
Approved:	GW	
Sheet size:	A3 (420mm x 297mm)	
Scale:	1:25 @ A3	

Drawing No.	Sheet	Revision
10432-008	01	A

E6



Printed panel

E6 Size: 1115mm x 1500mm x 1mm
E6 Height to underside: 725mm
E6 Cap height: 50 & 240mm

Specification

Black text printed onto 1mm thick white dibond panel, bonded to facade.

Illumination:

N/A

Quantity

1

E7



Printed panel

E7 Size: 525mm x 1500mm x 1mm
E7 Height to underside: 615mm
E7 Cap height: 240mm

Specification

Black text printed onto 1mm thick white dibond panel, bonded to facade.

Illumination:

N/A

Quantity

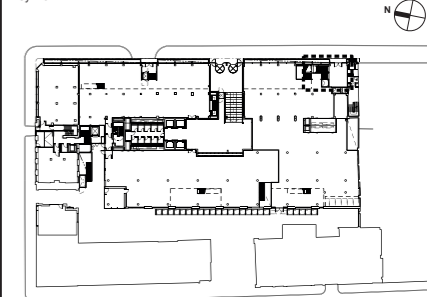
1

Notes

1. All dimensions in mm unless otherwise stated.
2. This drawing is to be read in conjunction with all relevant architects and engineers drawings, the specification for the works and any other specialist drawings.
3. All details are for technical intent purposes only - contractor to undertake full site technical survey to confirm all sizes, fixing details and access requirements on site. Any discrepancies are to be notified to the consultant prior to fabrication.
4. Contractor must submit production shop drawings for consultant review/comment prior to fabrication.
5. Sign contractor to calculate and determine structural loadings for all elements in accordance with site specific conditions.

Rev	Date	Description
B	24.01.2023	Initial issue
A	08.04.2022	Initial issue

Key Plan



Project

10432 - Johnson Gardens

Client

Johnson Hatton Office Unit
Trust
11-15 Seaton Place
St Helier
Jersey
JE4 0QH

Consultant

Endpoint Limited
165 Tower Bridge Road,
London, SE1 3LW
+44 (0)20 7089 2670
weareendpoint.com



Stage

Advertisement Consent

Drawing Title

Sign Type - E6 & E7

Project No.	10487	
Drawn:	OS	
Checked:	CT	
Approved:	GW	
Sheet size:	A3 (420mm x 297mm)	
Scale:	1:10 @ A3	

Drawing No.	Sheet	Revision
10432-009	01	A

Scale 1:10 @ A3



E8

THE COURTYARD BUILDING

Individual Pinned Letters

E8 Size: 875mm x 320mm x 3mm
E8 Height to underside: 2290mm
E8 Cap height: 91 & 30mm

Specification

Individual laser cut aluminium lettering painted white & pinned to facade.

Illumination:

N/A

Quantity

1

Scale 1:10 @ A3

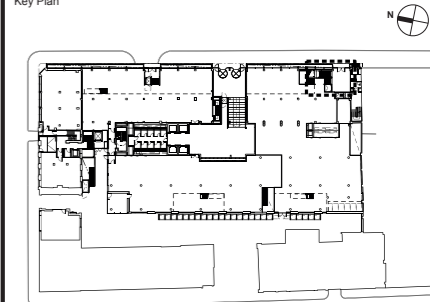
0m 0.2m 0.4m 0.6m 0.8m 1m

Notes

1. All dimensions in mm unless otherwise stated.
2. This drawing is to be read in conjunction with all relevant architects and engineers drawings, the specification for the works and any other specialist drawings.
3. All details are for technical intent purposes only - contractor to undertake full site technical survey to confirm all sizes, fixing details and access requirements on site. Any discrepancies are to be notified to the consultant prior to fabrication.
4. Contractor must submit production shop drawings for consultant review/comment prior to fabrication.
5. Sign contractor to calculate and determine structural loadings for all elements in accordance with site specific conditions.

Rev	Date	Description
B	24.01.2023	Initial issue
A	08.04.2022	Initial issue

Key Plan



Project

10432 - Johnson Gardens

Client

Johnson Hatton Office Unit
Trust
11-15 Seaton Place
St Helier
Jersey
JE4 0QH

Consultant

Endpoint Limited
165 Tower Bridge Road,
London, SE1 3LW
+44 (0)20 7089 2670
weareendpoint.com

endpoint.

Stage

Advertisement Consent

Drawing Title

Sign Type - E8 & E9

Project No.	10487	
Drawn:	OS	
Checked:	CT	
Approved:	GW	
Sheet size:	A3 (420mm x 297mm)	
Scale:	1:10 @ A3	

Drawing No.

10432-010

Sheet

01

Revision

A

E10

J O H N S O N
G A R D E N S

Individual Non-Illuminated Letters

E10 Size: 2308mm x 560mm x 10mm
E10 Height to underside: 1120mm
E10 Cap height: 184mm

Specification

Fabricated lettering fixed to internal face of fencing,
with face and returns painted grey to match gate.
Lettering to push through apertures in fence by
10mm.

Illumination:

N/A

Quantity

1

New electrical feed required.

Scale 1:50 @ A3

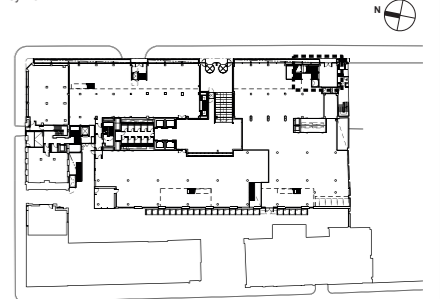


Notes

1. All dimensions in mm unless otherwise stated.
2. This drawing is to be read in conjunction with all relevant architects and engineers drawings, the specification for the works and any other specialist drawings.
3. All details are for technical intent purposes only - contractor to undertake full site technical survey to confirm all sizes, fixing details and access requirements on site. Any discrepancies are to be notified to the consultant prior to fabrication.
4. Contractor must submit production shop drawings for consultant review/comment prior to fabrication.
5. Sign contractor to calculate and determine structural loadings for all elements in accordance with site specific conditions.

Rev	Date	Description
B	24.01.2023	Initial issue
A	08.04.2022	Initial issue

Key Plan



Project

10432 - Johnson Gardens

Client

Johnson Hatton Office Unit
Trust
11-15 Seaton Place
St Helier
Jersey
JE4 0QH

Consultant

Endpoint Limited
165 Tower Bridge Road,
London, SE1 3LW
+44 (0)20 7089 2670
weareendpoint.com



Stage

Advertisement Consent

Drawing Title

Sign Type - E10

Project No.	10487	
Drawn:	OS	
Checked:	CT	
Approved:	GW	
Sheet size:	A3 (420mm x 297mm)	
Scale:	1:50 @ A3	

Drawing No.	Sheet	Revision
10432-011	01	A

weare**endpoint**.com



Endpoint Limited
165 Tower Bridge Road
London
SE1 3LW
United Kingdom

T +44 (0)20 7089 2670

© Endpoint. This document and the material contained in it is the property of Endpoint and is given to you on the understanding that such material and the ideas, concepts and proposal expressed in it are the intellectual property of Endpoint and protected by copyright. It is understood that you may not use this material or any part of it for any reason other than the evaluation of the document unless we have entered into a further agreement for its use. The document is provided to you in confidence, on the understanding it is not disclosed to anyone other than those of your employees who need to evaluate it.

