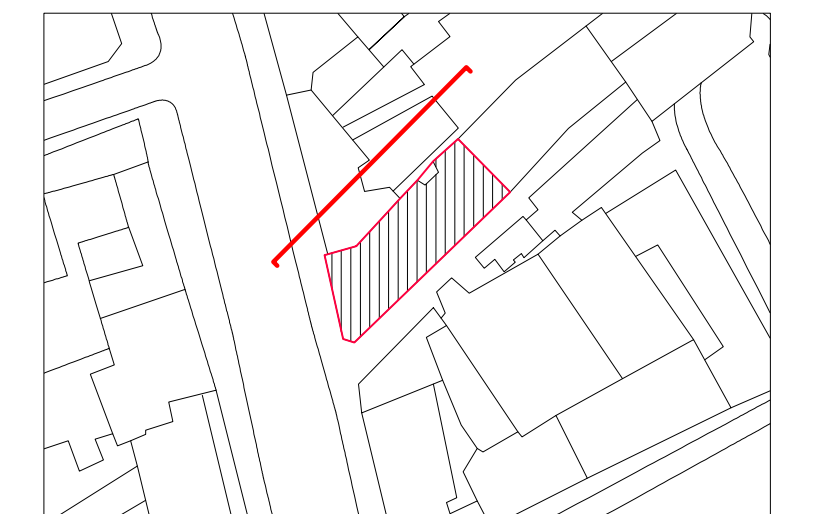


Key Plan



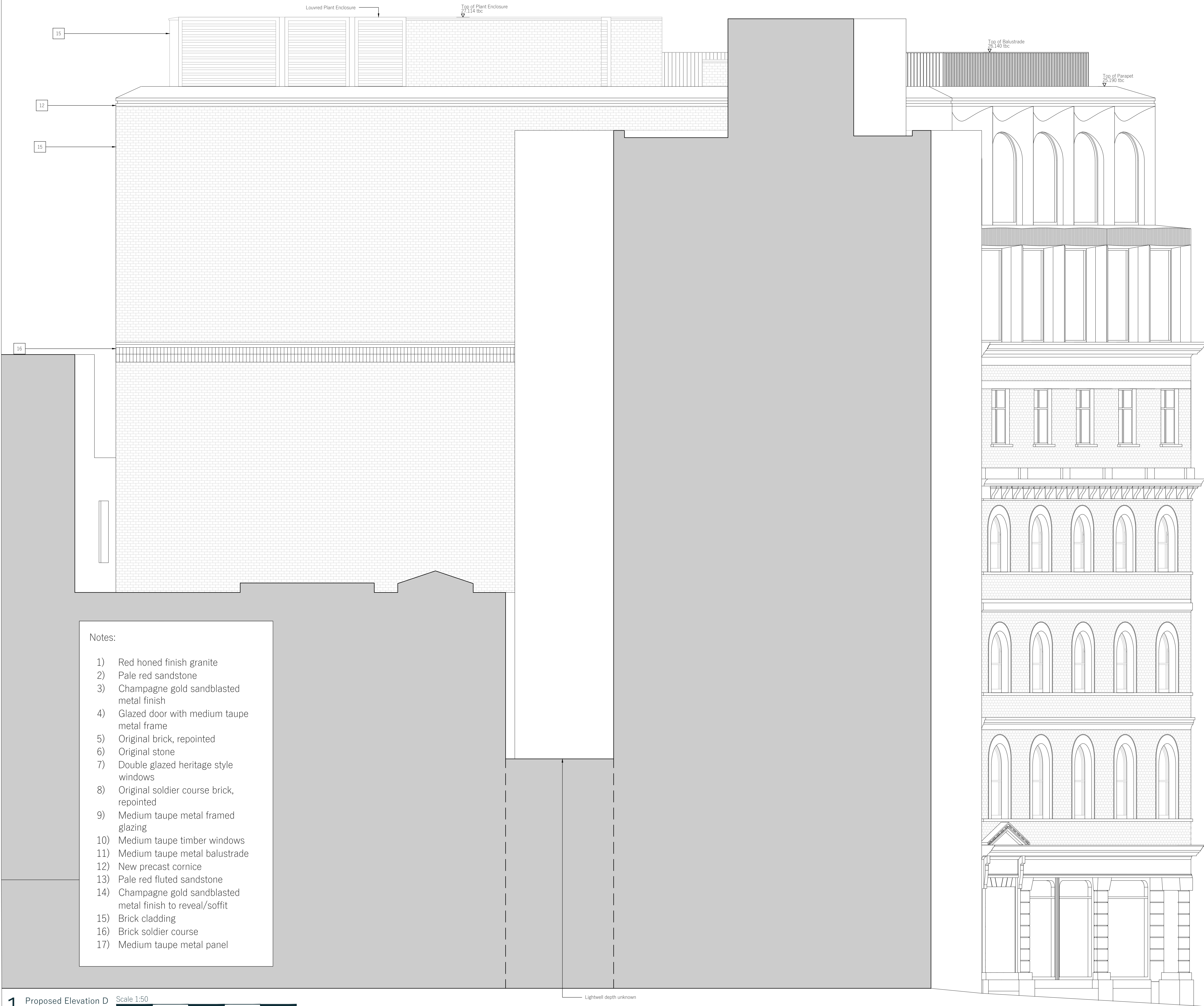
Notes

1. The drawings and dimensions are based on information received and collated from external sources and local measurements taken on site by DMBA. DMBA do not provide professional survey services and are therefore not responsible for the accuracy of the measurements.
2. Furniture and office partition layouts shown are indicative.
3. Adjacent elevation information extracted from planning application 2012/3251/P.
4. All levels shown are indicative and require further coordination with SE/MEP/Landscape.

Rev	Date	Description	Auth	Chkd
PL2	08.02.23	Issued for Planning	MB	GA

1. Do not scale from this drawing. All dimensions are in mm unless otherwise stated.
2. All levels and dimensions to be checked on site by contractor prior to commencing works. Report all discrepancies to DMBA.
3. All works shall follow relevant current statutory regulations. Workmanship and material shall follow relevant British standards and specification and codes of practice.
4. If this drawing is part of planning application, it should only be used for its purpose unless permission is sought from DMBA.
5. DMBA is not responsible for the accuracy of any information incorporated into this drawing from other professionals: any clarifications or further information required regarding this information from other professionals should be acquired from the relevant consultant or representative.
6. DMBA are to be informed, if there are any discrepancies between this drawing and other DMBA drawings or other consultants drawings.
7. This drawing is to be read in conjunction with all other DMBA drawings, specifications and schedules and all relevant consultant and specialist drawings, specifications, and contract documentation.
8. All work and site procedures are to comply with CDM requirements and regulations.
9. This drawing is subject to copyright.

Title	Proposed Elevation D		
Project	Flitcroft House		
Drawing Status	Planning		
Scale	1:50 at A1 1:100 at A3		
Project No.	Drawing No.	Revision	
20024	0316	PL2	



Notes:

- 1) Red honed finish granite
- 2) Pale red sandstone
- 3) Champagne gold sandblasted metal finish
- 4) Glazed door with medium taupe metal frame
- 5) Original brick, repointed
- 6) Original stone
- 7) Double glazed heritage style windows
- 8) Original soldier course brick, repointed
- 9) Medium taupe metal framed glazing
- 10) Medium taupe timber windows
- 11) Medium taupe metal balustrade
- 12) New precast cornice
- 13) Pale red fluted sandstone
- 14) Champagne gold sandblasted metal finish to reveal/soffit
- 15) Brick cladding
- 16) Brick soldier course
- 17) Medium taupe metal panel