



Camden Goods Yard
Planning Condition 27 – Building B Round House Way

Planning Condition - 27 Block B;

Roundhouse Way ground floor elevation to Roundhouse Way Notwithstanding the details as shown on the approved drawings, prior to commencement of works to Block B above the Roundhouse Way, details of the ground floor elevation to Roundhouse Way shall be submitted to and approved by the local planning authority in writing.

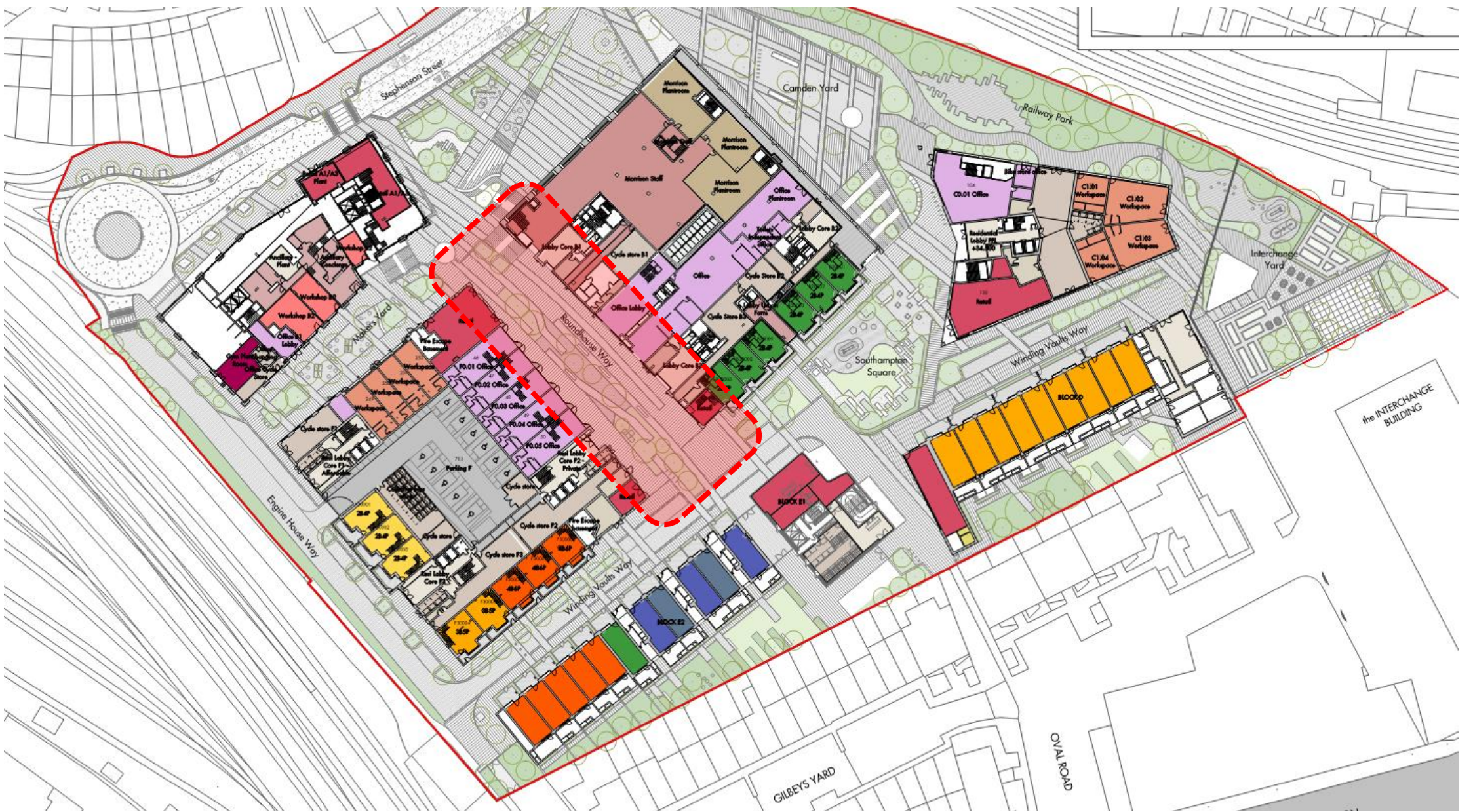
Such details to incorporate consideration of :

- a) Maximising opportunities for engagement between ground floor uses and passers-by
- b) Responding to the ground floor conditions on the opposite side of Roundhouse Way,
- c) Integrating the design with the remainder of the building

The ground floor treatment shall be implemented in accordance with the details as approved. Above Ground works Details of the ground floor elevation to Roundhouse Way in line with condition requirements.

This presentation has been created to take the reader through the space looking at the following elements of the design to assist in discharging Planning Condition 27 :-

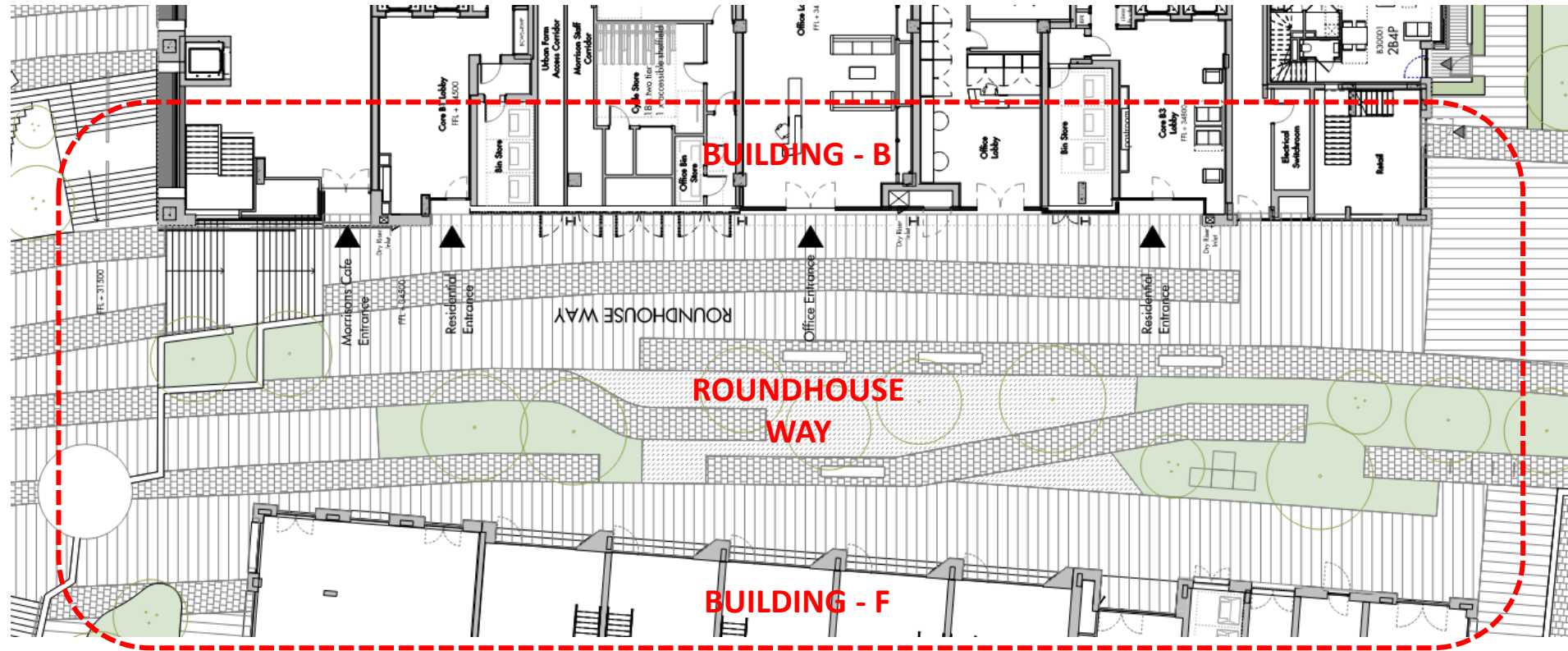
- Building B Elevation Design & Active Frontages
- Landscape Design, Access Routes and Engagement with Building Uses of Buildings B&F
- Building B Materials
- Building B Details



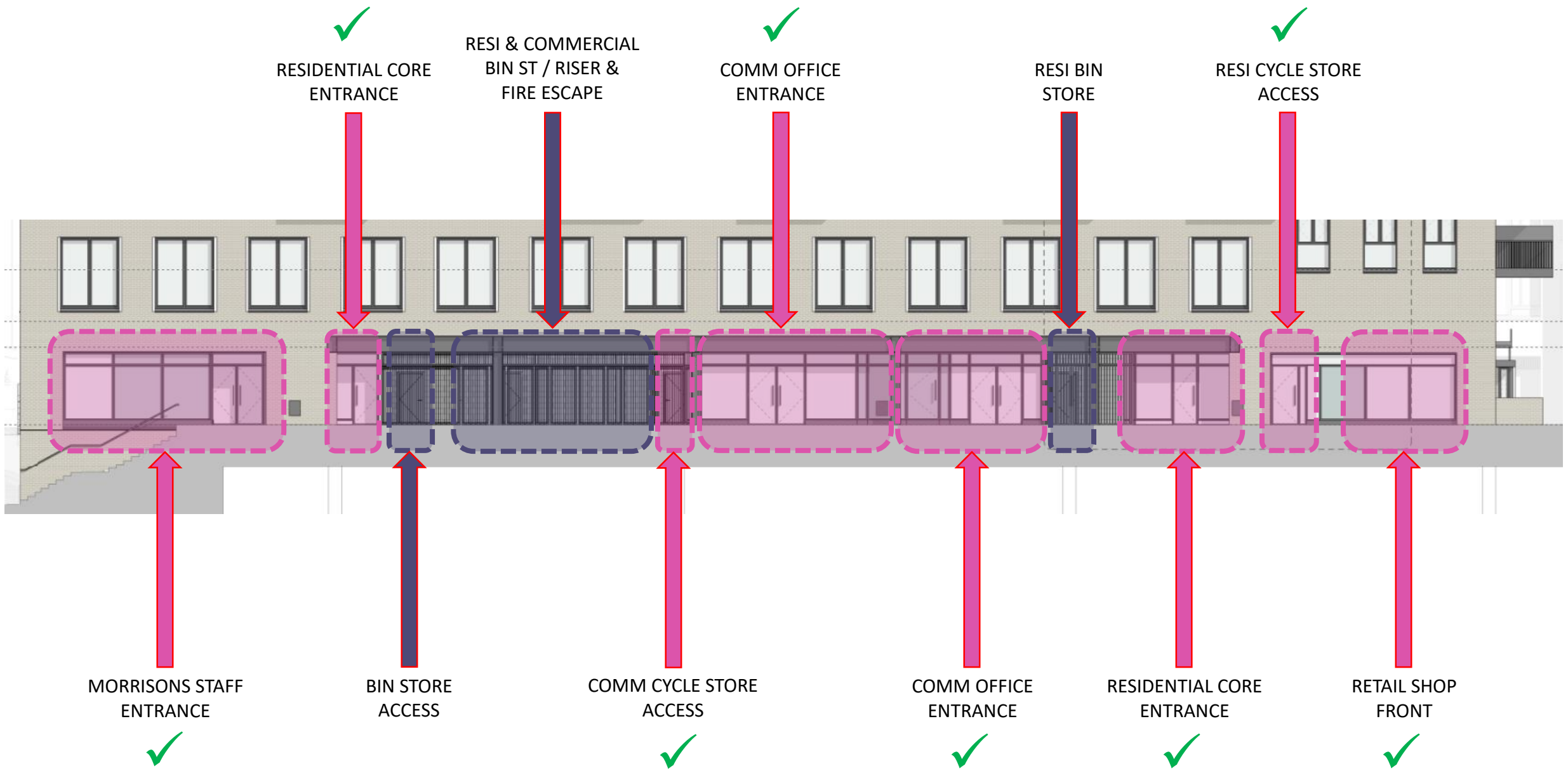
Camden Goods Yard
 Planning Condition 27 – Building B Round House Way
 Masterplan



Camden Goods Yard
 Planning Condition 27 – Building B Round House Way
 Building B Elevation



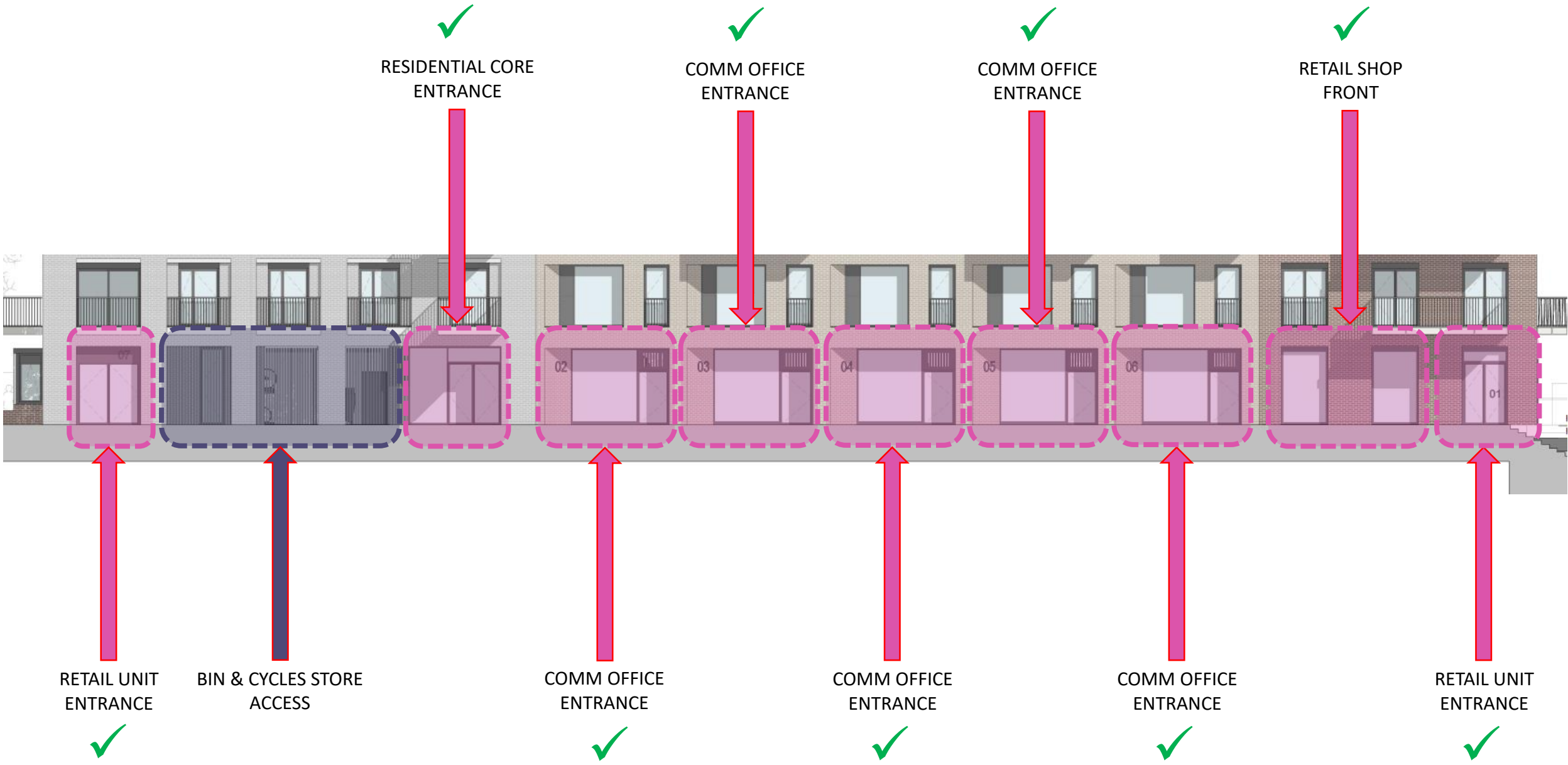
Camden Goods Yard
 Planning Condition 27 – Building B Round House Way
 General Arrangement

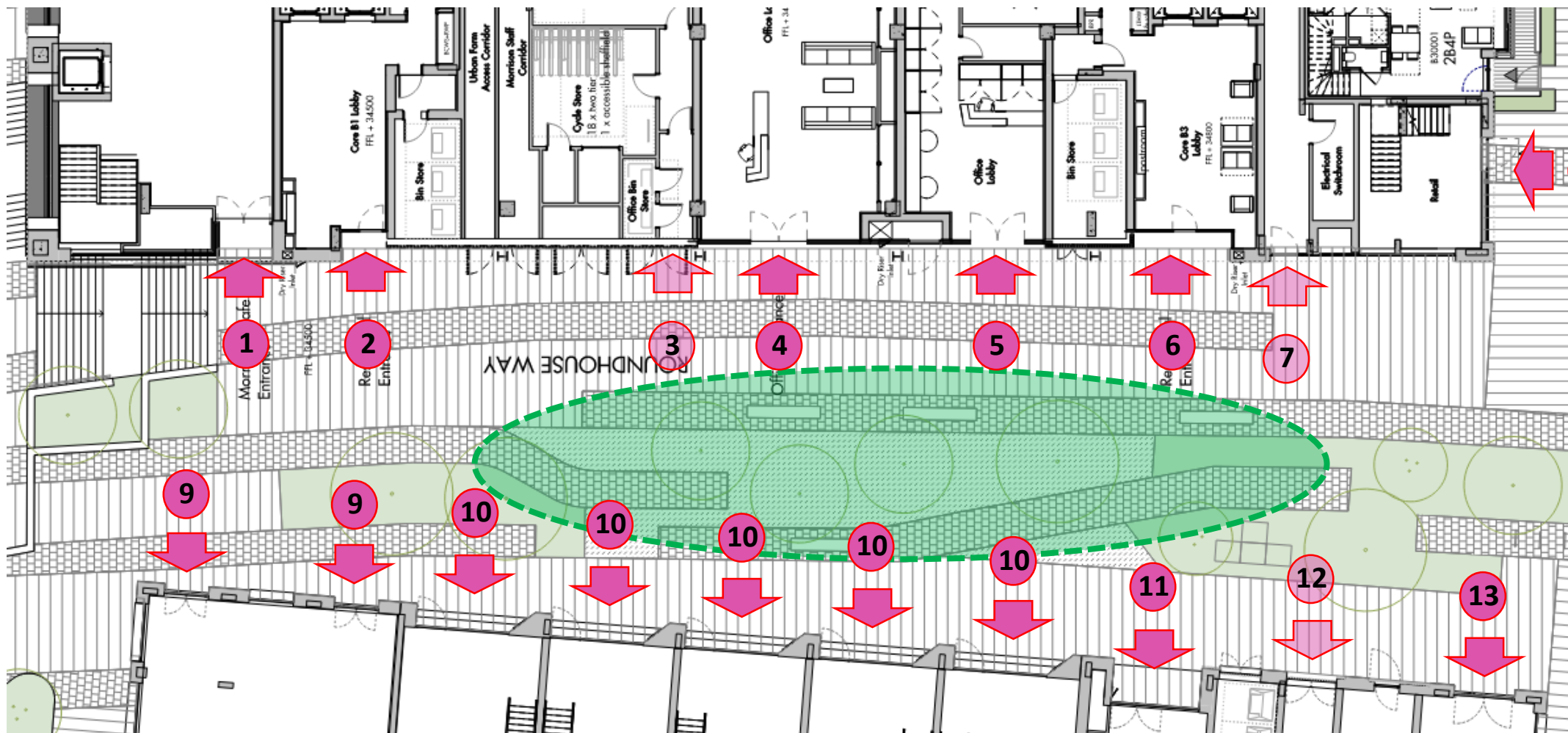


Camden Goods Yard
Planning Condition 27 – Building B Round House Way
Building – B Elevation Active Frontages

ACTIVE FRONTAGE SERVICE ACCESS







LEGEND

1. Morrisons Main Staff Entrance
2. Residential Entrance Lobby
3. Commercial Cycle Store
4. Commercial Office Entrance
5. Commercial Office Entrance
6. Residential Entrance Lobby
7. Residential Cycle Store
8. Retail Unit Entrance
9. Retail Unit Entrance
10. Commercial Office Entrance
11. Residential Entrance Lobby
12. Residential Cycle Store
13. Retail Unit Entrance

Camden Goods Yard

Planning Condition 27 – Building B Round House Way

Active Access Points Plan



PRIMARY ACTIVE ACCESS

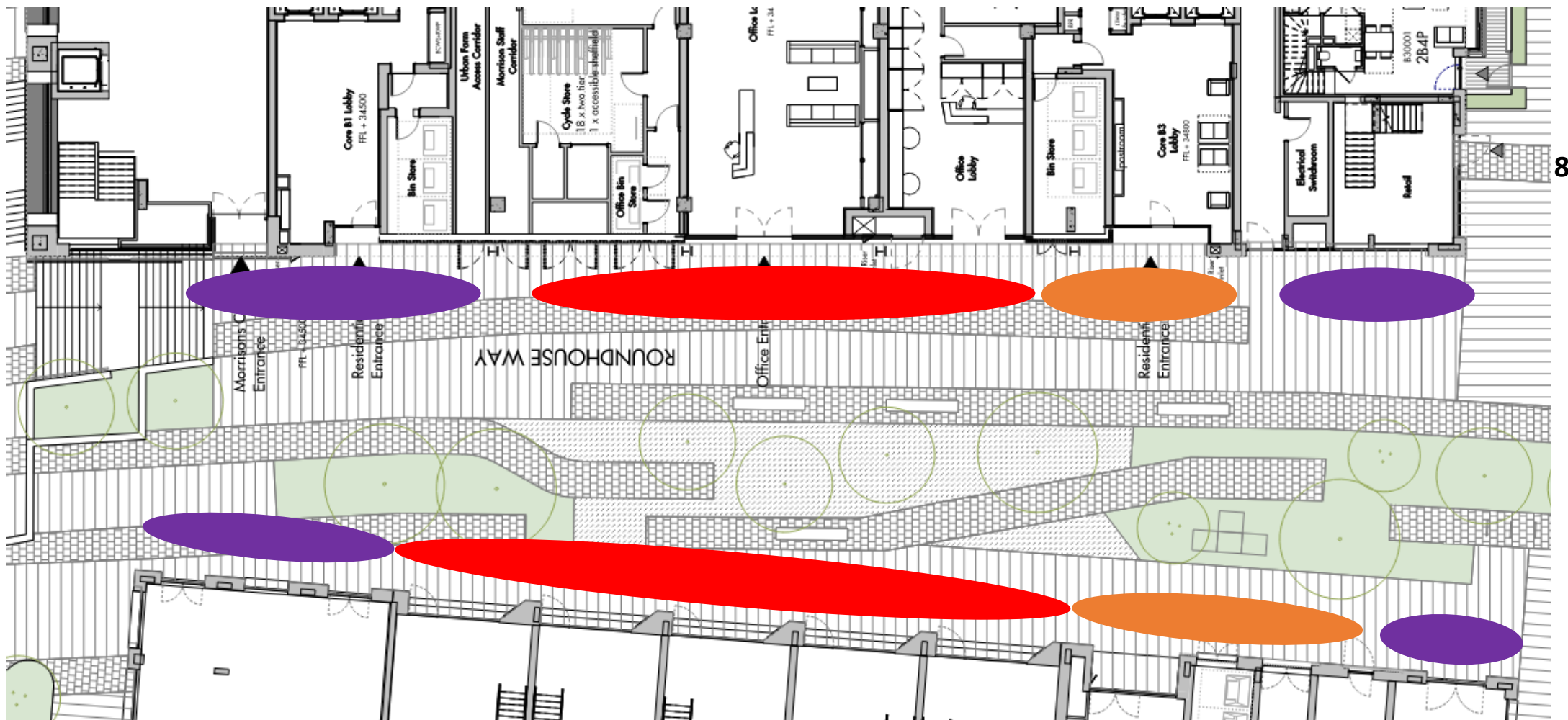


SECONDARY ACTIVE ACCESS



LANDSCAPE SEATING AREA





8

Camden Goods Yard
 Planning Condition 27 – Building B Round House Way
 Uses Plan



MORRISONS /
 RETAIL USE

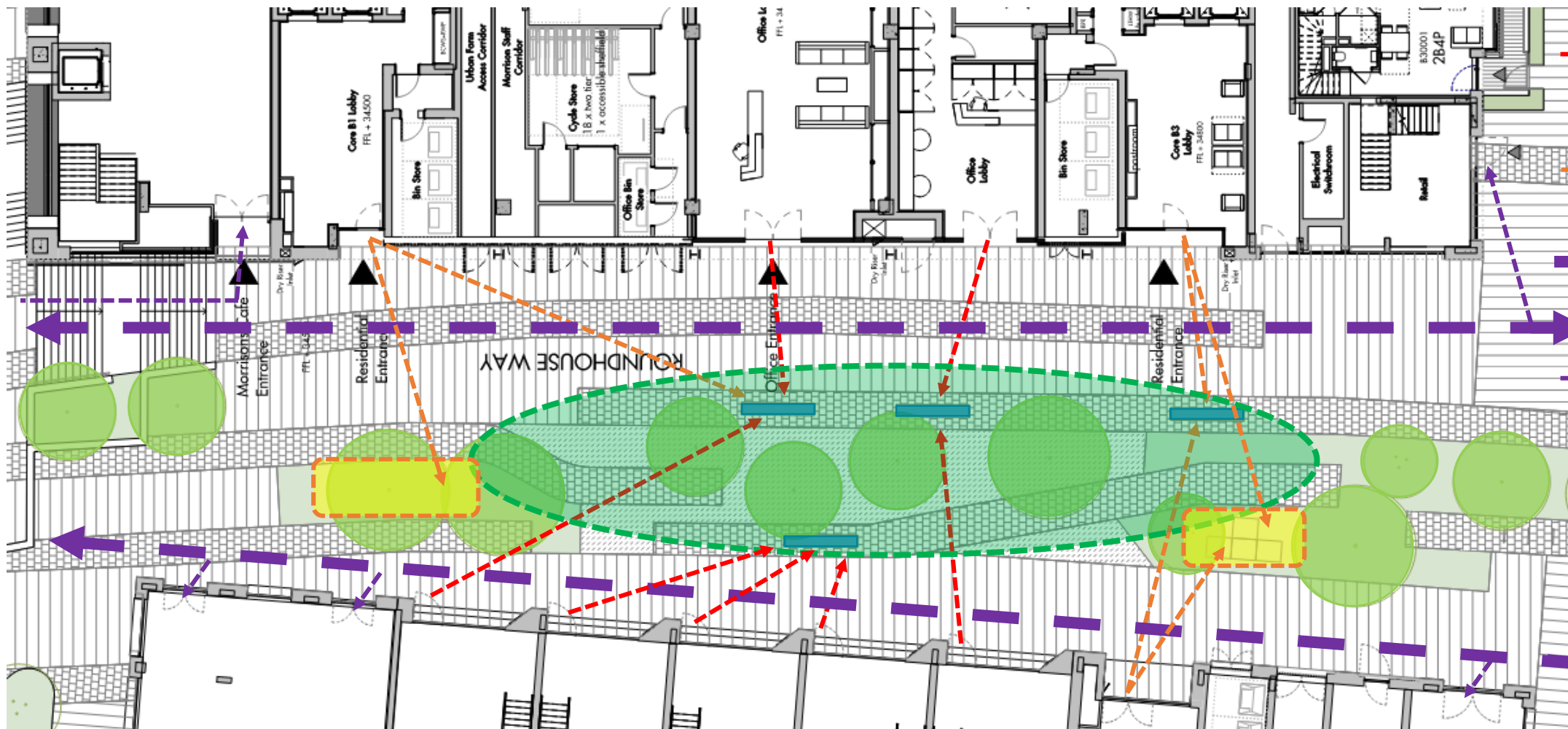


COMMERCIAL
 OFFICE USE



RESIDENTIAL
 USE





LEGEND

1. Commercial Office Activity Routes
2. Residential Activity Routes
3. General Access Routes Through Roundhouse Way
4. Retail Activity Routes



BUILDING B - PART ELEVATION



5. BUILDING B BRICKWORK



1. ALUMINIUM CURTAIN WALLING



2. STEEL COLUMN



3. VERTICAL LOUVRES



4. ALUMINIUM WINDOWS



6. FEATURE STEEL BEAM OVER OPENINGS

1. Aluminium Curtain Walling
Thermally Broken Double Glazed
Aluminium Curtain Walling RAL-7022
2. Feature Steel Column
All Steelwork coloured to match curtain walling RAL-7022
3. Feature Vertical Louvres
All Steelwork coloured to match curtain walling RAL-7022
4. Aluminium Windows
Thermally Broken Double Glazed
Aluminium Windows RAL-7022
5. Building B Brickwork
Wienerberger Brongroen
6. Feature Steel Beam
All Steelwork coloured to match curtain walling - Warm Grey - RAL-7022

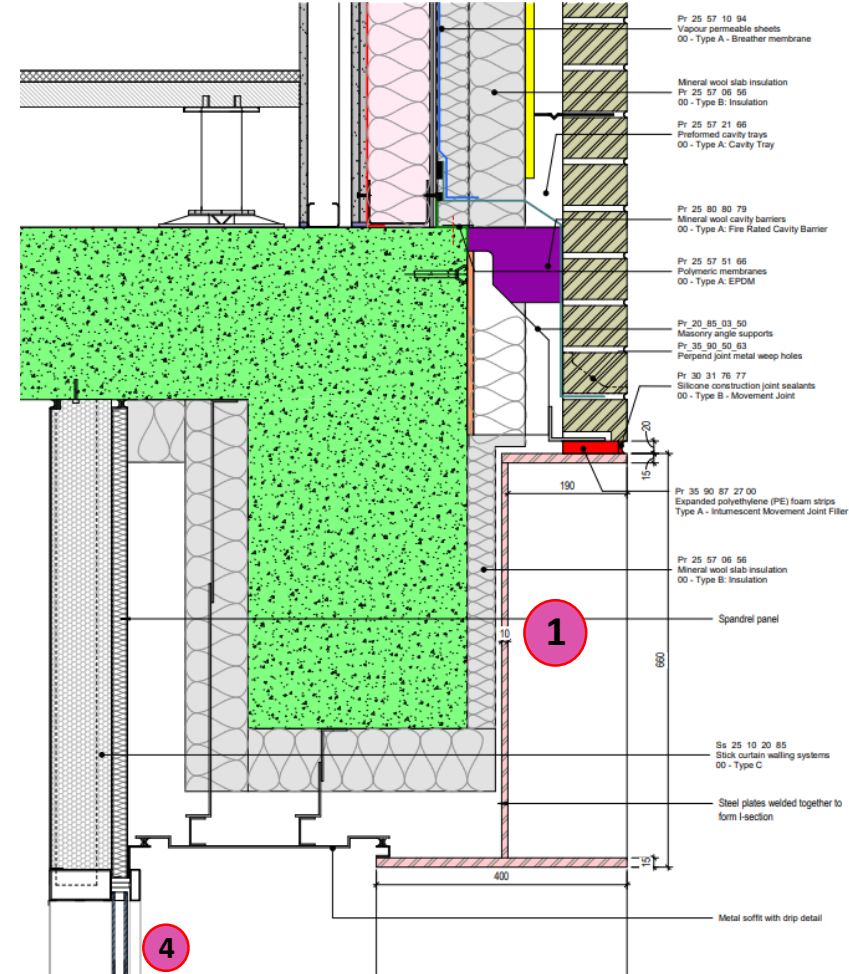


Camden Goods Yard

Planning Condition 27 – Building B Round House Way
Building B Elevation Materials



BUILDING B - PART ELEVATION



BUILDING B - FEATURE BEAM DETAIL

LEGEND

1. Feature Steel Beam Finished in RAL7022
2. Feature Steel Column Finished in RAL7022
3. Curtain Walling PPC Frames Finished in RAL7022. Back Painted Glass
4. Curtain Walling PPC Frames Finished in RAL7022. Clear Glass
5. Vertical Steel Louvres PPC Finished in RAL7022