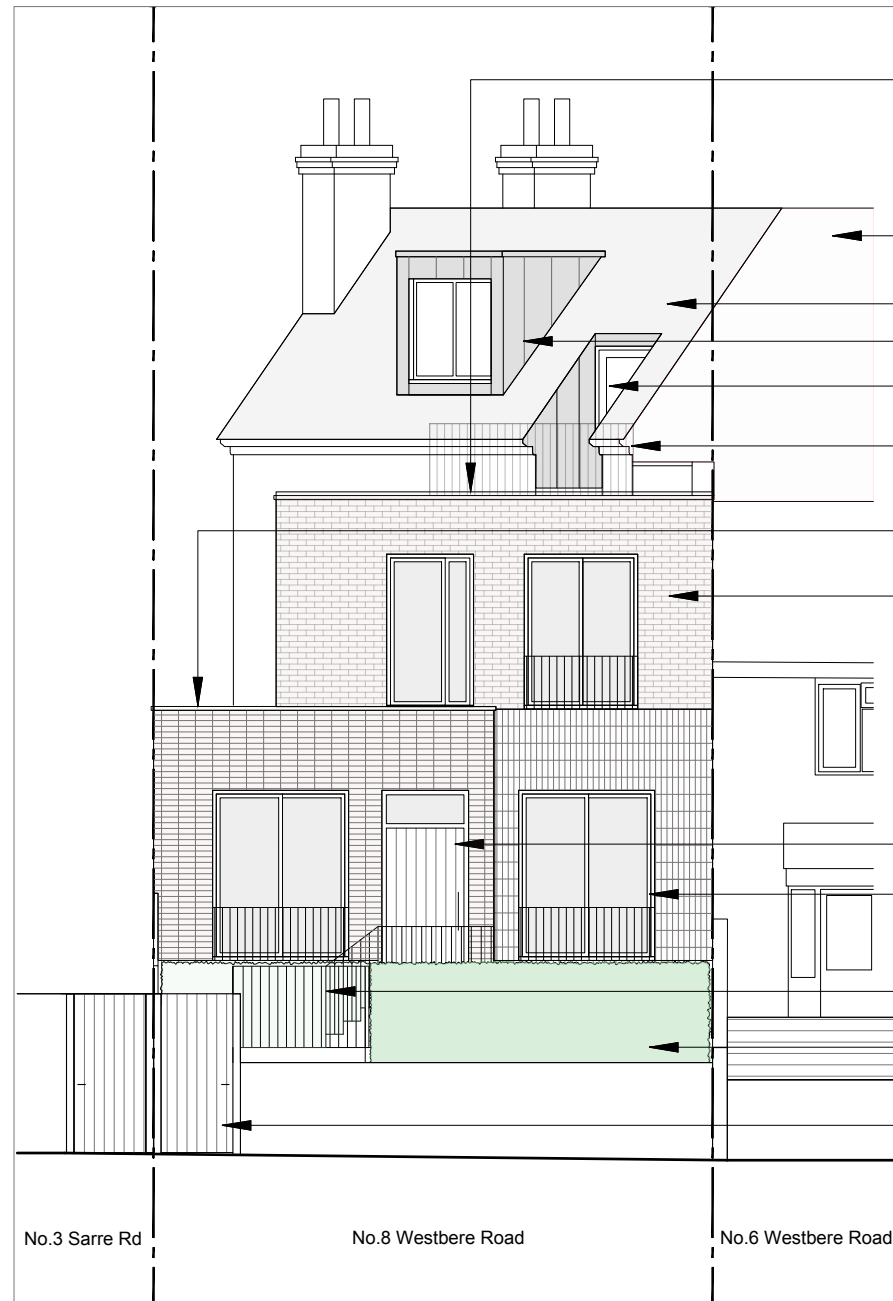


REAR ELEVATION / WESTBERE ROAD



- Timber decking to Flat 4 terrace
- Reclaimed Fletton bricks to gable walls to match existing flank walls
- 500mm x 250mm eternit blue black thrutone slates
- Vertical standing seam zinc
- Alitherm plus aluminium door
- Metal railings painted black
- Sedum blanket green roof
- Guestling Red in imperial size to match existing
- New lacquered oak front entrance door
- Alitherm 800 aluminium windows
- Metal railings painted black
- New hedging facing Westbere Road (mixed holly and hawthorn)
- New timber gate to Westbere Road



Proposed 500mm x 250mm eternit blue black thrutone slates



Proposed vertical standing seam zinc to dormer window



Proposed Guestling red bricks



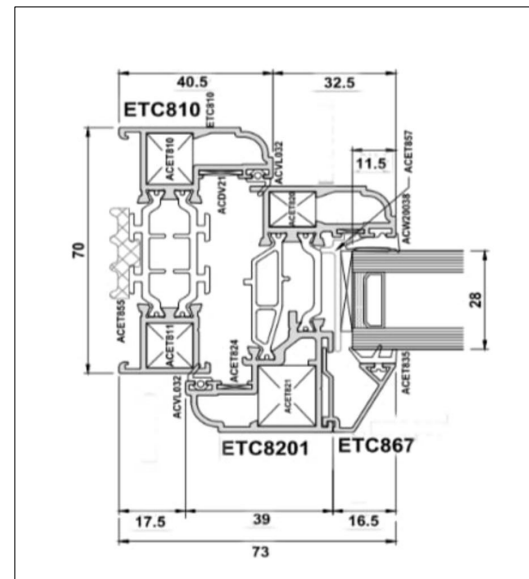
Guestling red bricks sample



Existing house bricks



Proposed Alitherm 800 aluminium windows 1/2 @A3 Detail



Alitherm double glazed PPC aluminium window specifications

Technical Performance	
Finish	Single or dual colour, marine quality polyester powder coat as standard **
U Value	1.3W/m²K using 1.0 centre pane
WER	A
Air	Class 4, 600pa
Water	Class E, 1050pa
Wind	Class A5, 2000pa
Security	PAS 24:2012
Doc L 2010	Yes
Dimensions	
Frame Depth	70mm
Glass	24mm, 28mm double or triple glazed units
SH Max o/a width	700mm
SH Max o/a height	700mm
TH Max o/a width	1400mm
TH Max o/a height	1500mm
<small>(For sizes outside of these parameters, contact Smarts Technical.)</small>	

RAL 7023



RAL 7023

Concrete Grey

(See attached Alitherm 800 PDF for jambs, head and cill details)

NOTES

DO NOT SCALE FROM THIS DRAWING EXCEPT FOR THE PURPOSES OF PLANNING AND BUILDING REGULATIONS ALL DIMENSIONS TO BE CHECKED ON SITE.

AURAA
STUDIO

www.auraa.studio 1A Chalk Farm Parade
info@auraa.studio London NW3 2BN

PROJECT TITLE

1 SARRE ROAD

DRAWING TITLE

CONDITION 4
MATERIALS, FINISHES AND SPECIFICATIONS
REAR ELEVATION

DATE 08.02.2023

SCALE 1/100 @ A3

DRAWN LC / RL

STATUS INFORMATION

DRG No 2210_ PA_740

REV: G