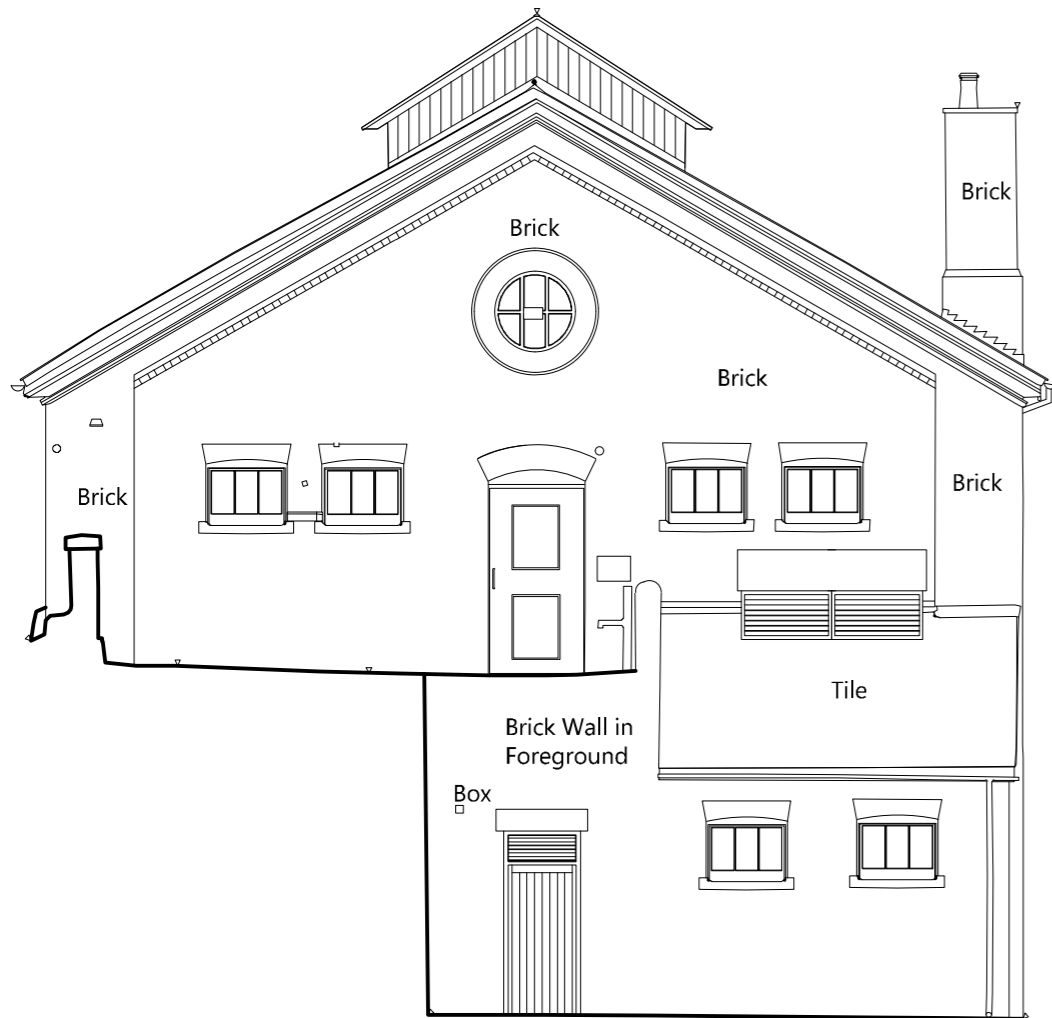
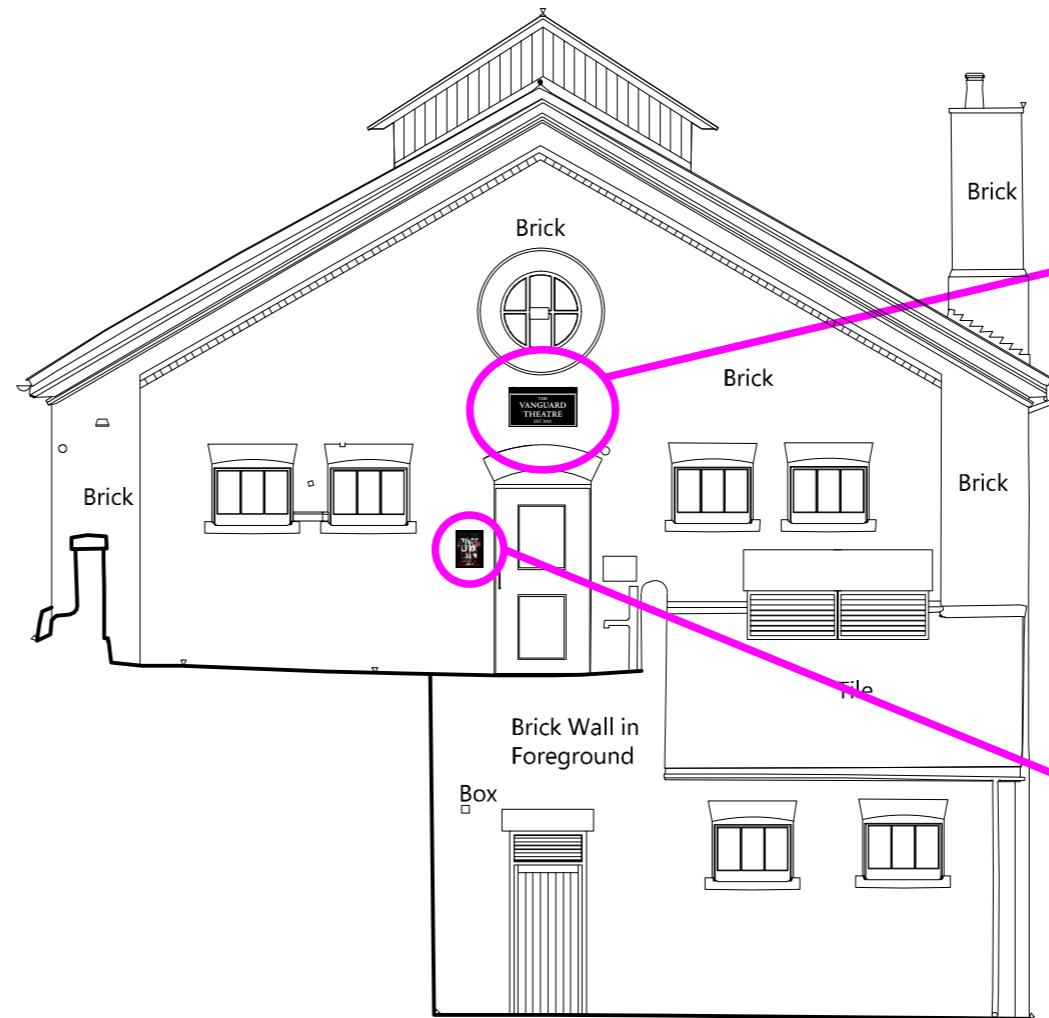
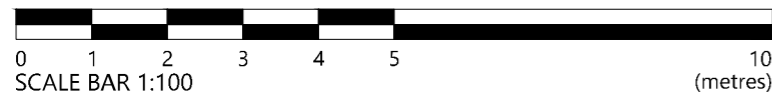


## ELEVATION OF EXISTING

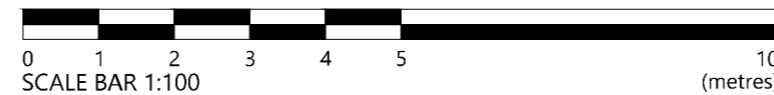
## ELEVATION WITH PROPOSED SIGNAGE



WEST ELEVATION - 1:100



WEST ELEVATION - 1:100



### Item A

Proposed 900x450mm  
Timber Board Sign.

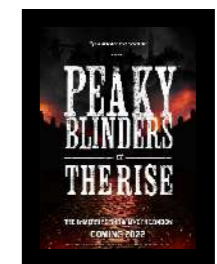
*Below image not to scale.*



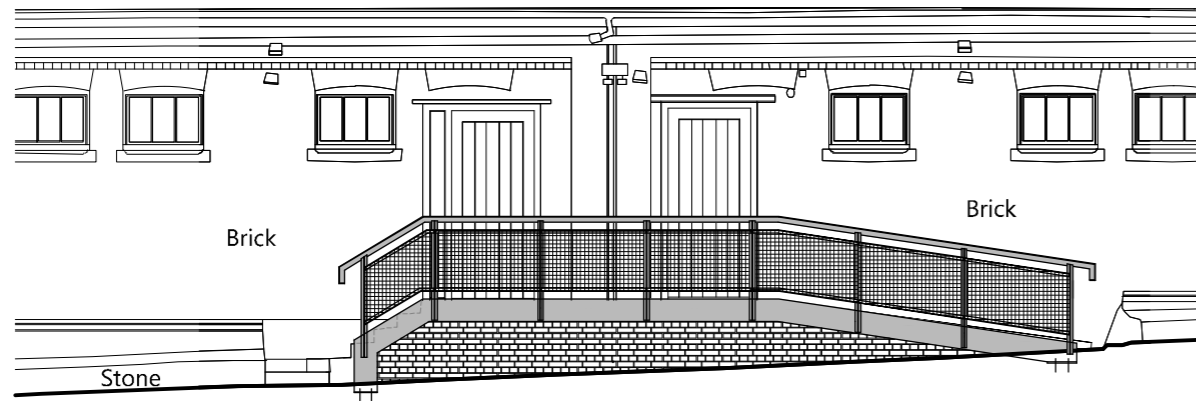
### Item B

A3 poster box, internally illuminated.

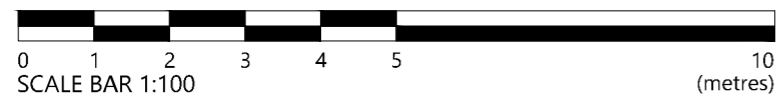
*Below image not to scale.*



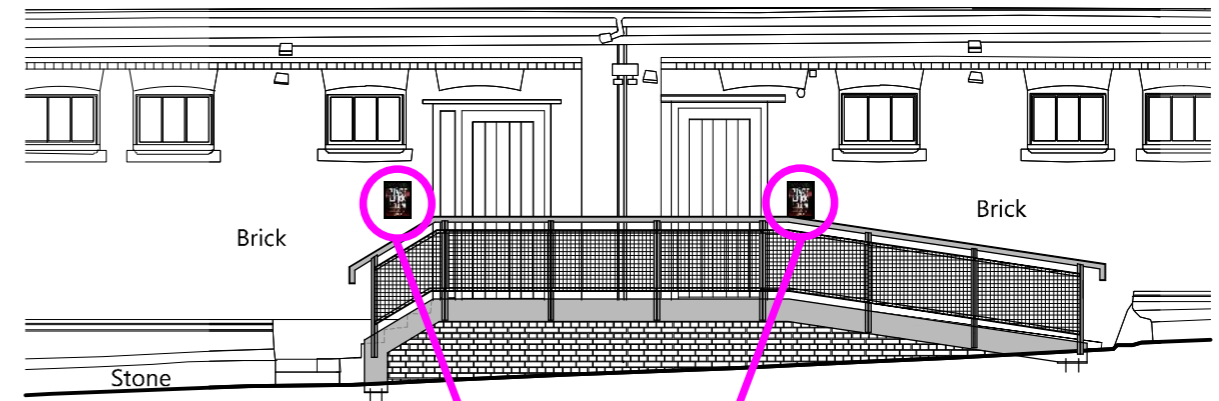
## ELEVATION OF EXISTING



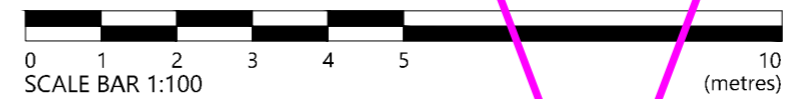
### NORTH ELEVATION



## ELEVATION WITH PROPOSED SIGNAGE



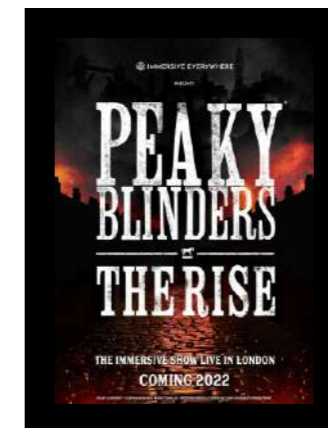
### NORTH ELEVATION



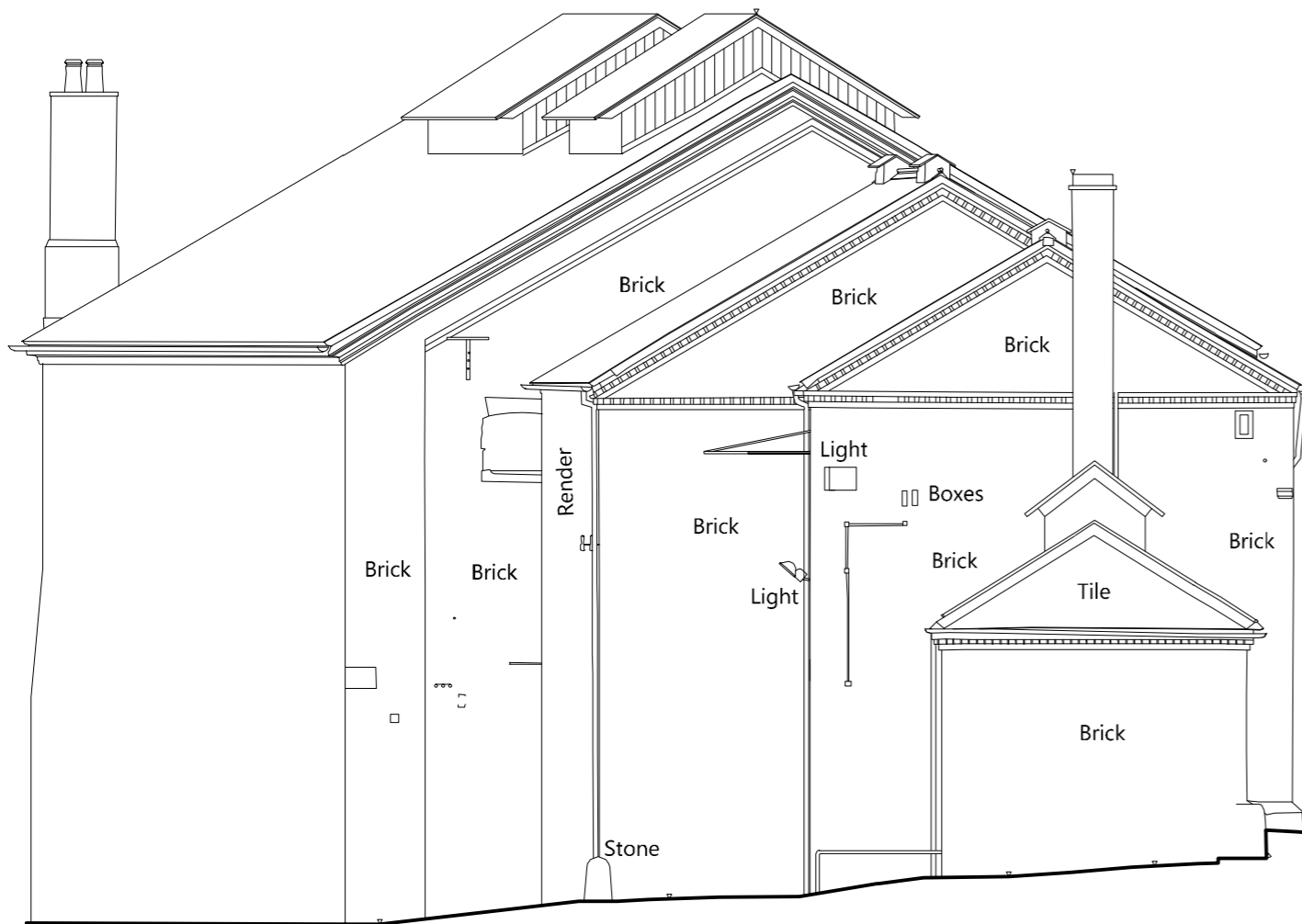
### Items C & D

A3 poster boxes, internally illuminated.

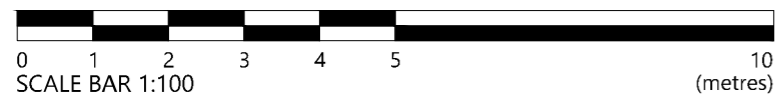
*Below image not to scale.*



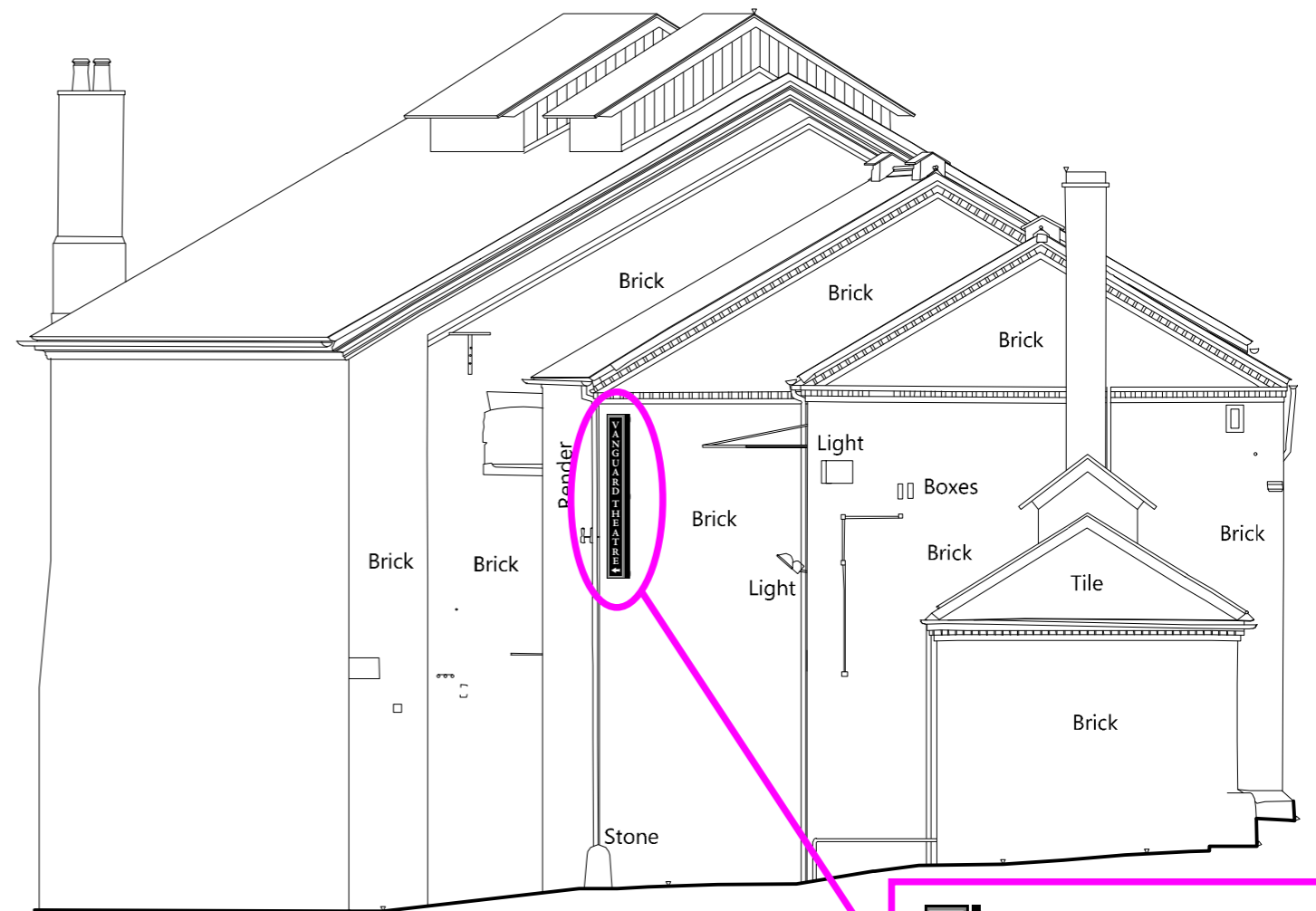
**ELEVATION OF EXISTING**



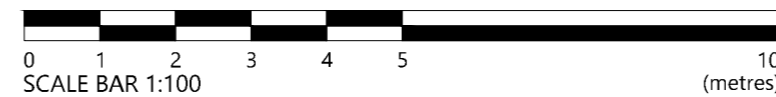
**EAST ELEVATION**



**ELEVATION WITH PROPOSED SIGNAGE**



**EAST ELEVATION**

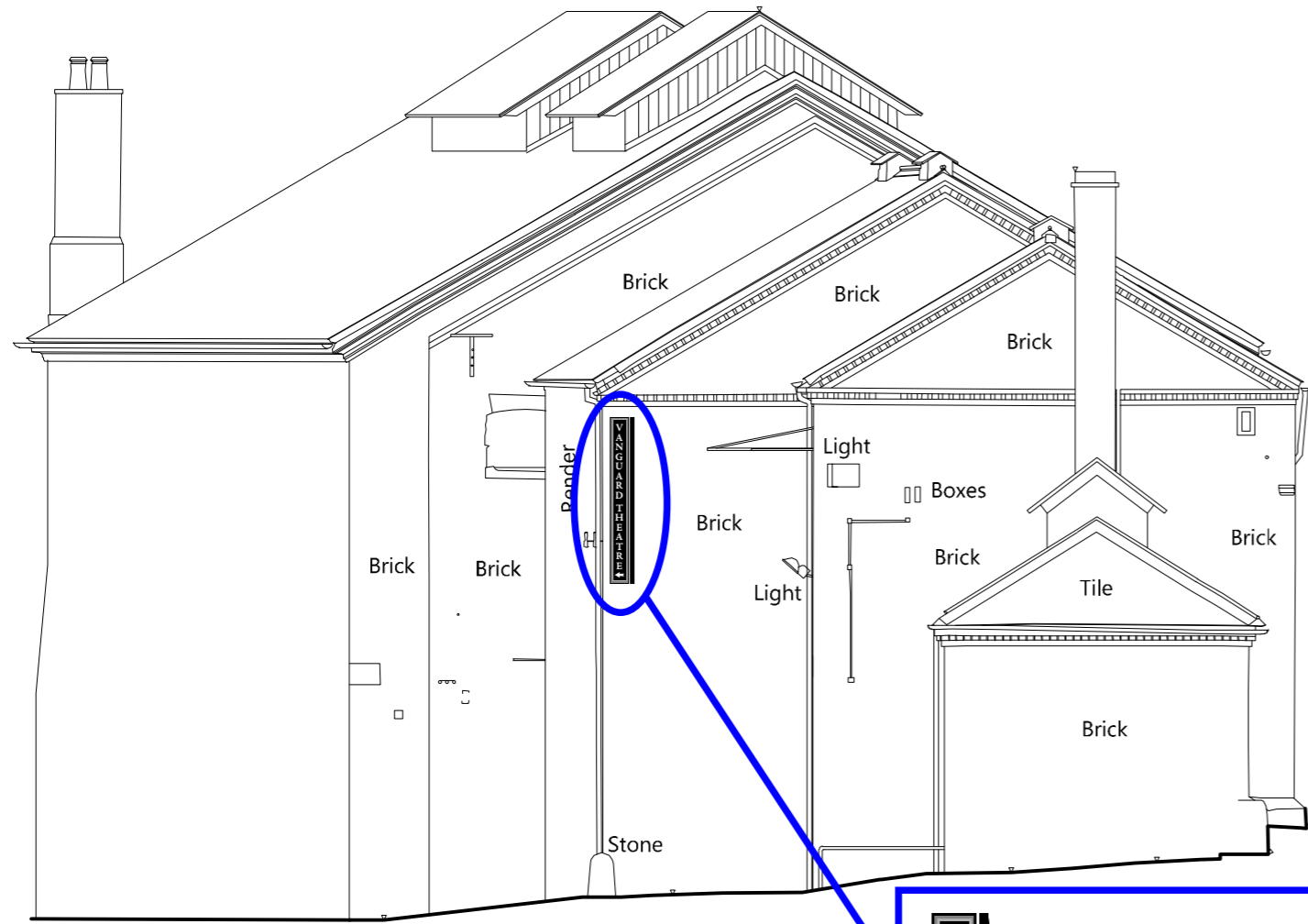


**Item H**

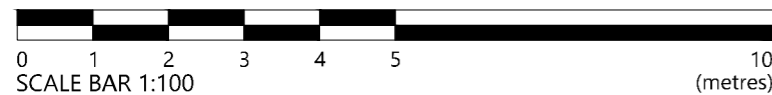
Proposed  
271x2400mm  
Timber Board Sign.


*Image to left  
not to scale.*

BELOW IS PROPOSED ELEVATION FOR ITEM H FOR REFERENCE. PLEASE SEE NOTE OPPOSITE. ➔



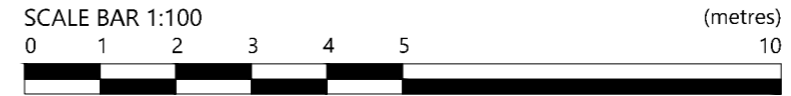
EAST ELEVATION






**Item H**  
 Proposed 271x2400mm Timber Board Sign.  
*Image to left not to scale.*

Elevations for the ramp signs are unavailable, therefore please see below drawings to scale with the Item H elevation on the left side of this page, complete with scale bar. This is to confirm the sizes of items E, F & G to scale. For locations, please see the drawings/visuals on the separate document "Vanguard Theatre - Rev 6".



- E 
- F 
- G 



**Items E & F**  
 Proposed 1460x600mm Timber Board Sign.  
*Images within this purple box not to scale.*



**Item G**  
 Proposed 1640x911mm Timber Board Sign.  
*Image within this purple box not to scale.*