

GENERAL NOTES:

This drawing is copyright of KSR architects. This drawing must be read in conjunction with the Designer's Risk Assessment, specification and all other relevant documentation and drawings. KSR architects accept no liability for any expense, loss or damage of whatsoever nature and however arising from any variation made to this drawing or in the execution of the work to which it relates which has not been referred to them and their approval obtained. Areas are based on unchecked survey and are approximate only. Do not scale from this drawing or the digital data, only figured dimensions are to be used. Refer to linear scale for guidance. Check all dimensions on site prior to carrying out any works and advise any discrepancy

- Consented line of the LGF extension
REF. 2021/2825/P
- Proposal line of the LGF extension
- Existing line of the LGF
- Blind wall of the side property N.14

Status:PLANNING APPLICATION

KSR ARCHITECTS &
INTERIOR DESIGNERS
KSR Architects LLP
14 Greenland Street
London NW1 0ND
mail@ksrarchitects.com
t: +44 (0)20 7692 5000
www.ksrarchitects.com

FLAT 2, 16 LYNDHURST GARDENS - HAMPSTEAD

PROPOSED LGF PLAN

Date 19/12/2022

Scale:1:100 @A3

Drawn By:OC

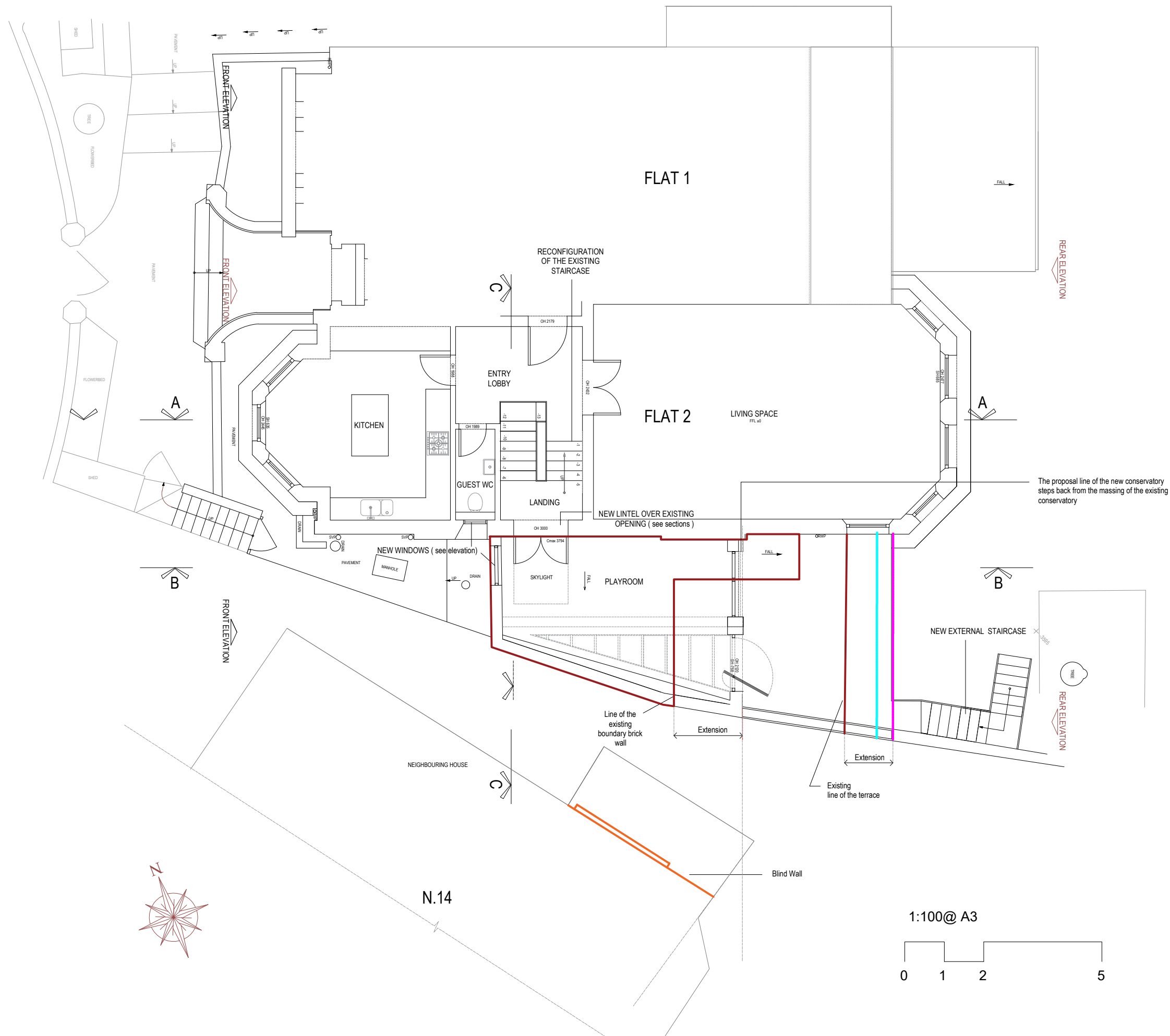
Checked By:SC

Project Ref. 20041

Rev. -

Drawing No 1-PA-101

© KSR ARCHITECTS & INTERIOR DESIGNERS



GENERAL NOTES:

This drawing is copyright of KSR architects. This drawing must be read in conjunction with the Designer's Risk Assessment, specification and all other relevant documentation and drawings. KSR architects accept no liability for any expense, loss or damage of whatsoever nature and however arising from any variation made to this drawing or in the execution of the work to which it relates which has not been referred to them and their approval obtained. Areas are based on unchecked survey and are approximate only. Do not scale from this drawing or the digital data, only figured dimensions are to be used. Refer to linear scale for guidance. Check all dimensions on site prior to carrying out any works and advise any discrepancy

- CONSSENTED LINE OF THE TERRACE
- REF. 2021/2825/P
- PROPOSAL LINE OF THE TERRACE
- EXISTING LINE OF THE TERRACE
- BLIND WALL OF THE SIDE PROPERTY N.14

Status:PLANNING APPLICATION

KSR ARCHITECTS & INTERIOR DESIGNERS
KSR Architects LLP mail@ksrarchitects.com
14 Greenland Street t: +44 (0)20 7692 5000
London NW1 0ND www.ksrarchitects.com

FLAT 2, 16 LYNDHURST GARDENS - HAMPSTEAD

PROPOSED GF PLAN

Date 19/12/2022

Scale:1:100 @A3

Drawn By:OC

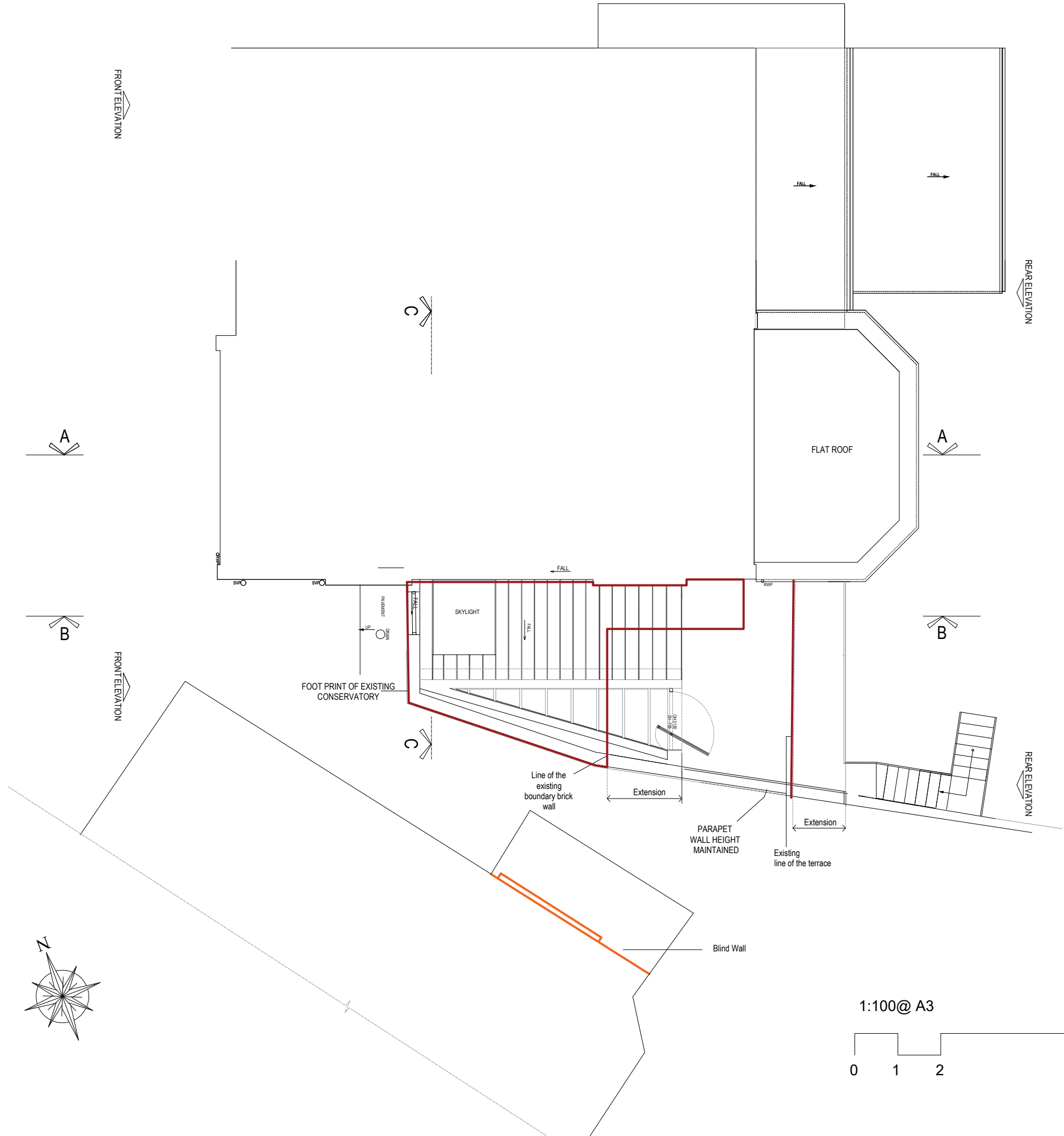
Checked By:SC

Project Ref. 20041

Rev. -

Drawing No 1-PA-102

© KSR ARCHITECTS & INTERIOR DESIGNERS



GENERAL NOTES:

This drawing is copyright of KSR architects. This drawing must be read in conjunction with the Designer's Risk Assessment, specification and all other relevant documentation and drawings. KSR architects accept no liability for any expense, loss or damage of whatsoever nature and however arising from any variation made to this drawing or in the execution of the work to which it relates which has not been referred to them and their approval obtained. Areas are based on unchecked survey and are approximate only. Do not scale from this drawing or the digital data, only figured dimensions are to be used. Refer to linear scale for guidance. Check all dimensions on site prior to carrying out any works and advise any discrepancy

— LINE OF THE EXISTING CONSERVATORY AND EXISTING TERRACE

— BLIND WALL OF THE SIDE PROPERTY N.14

Status:PLANNING APPLICATION

KSR ARCHITECTS & INTERIOR DESIGNERS

KSR Architects LLP
14 Greenland Street
London NW1 0ND

mail@ksrarchitects.com
t: +44 (0)20 7692 5000
www.ksrarchitects.com

FLAT 2, 16 LYNDHURST GARDENS - HAMPSTEAD

PROPOSED ROOF PLAN

Date 19/12/2022

Scale:1:100 @A3

Drawn By:OC

Checked By:SC

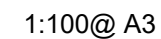
Project Ref. 20041

Rev. -

Drawing No 1-PA-103

© KSR ARCHITECTS & INTERIOR DESIGNERS

This drawing is copyright of KSR architects. This drawing must be read in conjunction with the Designer's Risk Assessment, specification and all other relevant documentation and drawings. KSR architects accept no liability for any expense, loss or damage of whatsoever nature and however arising from any variation made to this drawing or in the execution of the work to which it relates which has not been referred to them and their approval obtained. Areas are based on unchecked survey and are approximate only. Do not scale from this drawing or the digital data, only figured dimensions are to be used. Refer to linear scale for guidance. Check all dimensions on site prior to carrying out any works and advise any discrepancy



KSR Architects LLP
14 Greenland Street
London NW1 0ND
mail@ksrarchitects.com
t: +44 (0)20 7692 5000
www.ksrarchitects.com

FLAT 2, 16 LYNTHURST GARDENS - HAMPSTEAD

PROPOSED REAR ELEVATION
(SIDE EXTENSION)

Date 19/12/2022

Scale:1:100 @A3

Drawn By:OC

Checked By:SC

Project Ref. 20041

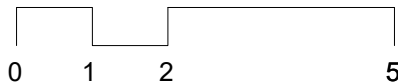
Rev. -

Drawing No 2-PA-201

© KSR ARCHITECTS & INTERIOR DESIGNERS



1:100@ A3



GENERAL NOTES:

This drawing is copyright of KSR architects. This drawing must be read in conjunction with the Designer's Risk Assessment, specification and all other relevant documentation and drawings. KSR architects accept no liability for any expense, loss or damage of whatsoever nature and however arising from any variation made to this drawing or in the execution of the work to which it relates which has not been referred to them and their approval obtained. Areas are based on unchecked survey and are approximate only. Do not scale from this drawing or the digital data, only figured dimensions are to be used. Refer to linear scale for guidance. Check all dimensions on site prior to carrying out any works and advise any discrepancy

Status:PLANNING APPLICATION

KSR ARCHITECTS &
INTERIOR DESIGNERS
KSR Architects LLP mail@ksrarchitects.com
14 Greenland Street t: +44 (0)20 7692 5000
London NW1 0ND www.ksrarchitects.com

FLAT 2, 16 LYNDHURST GARDENS - HAMPSTEAD

**PROPOSED FRONT ELEVATION
(SIDE EXTENSION)**

Date 19/12/2022

Scale:1:100 @A3

Drawn By:OC

Checked By:SC

Project Ref. 20041

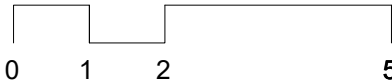
Rev. -

Drawing No 2-PA-202

© KSR ARCHITECTS & INTERIOR DESIGNERS



1:100@ A3



GENERAL NOTES:

This drawing is copyright of KSR architects. This drawing must be read in conjunction with the Designer's Risk Assessment, specification and all other relevant documentation and drawings. KSR architects accept no liability for any expense, loss or damage of whatsoever nature and however arising from any variation made to this drawing or in the execution of the work to which it relates which has not been referred to them and their approval obtained. Areas are based on unchecked survey and are approximate only. Do not scale from this drawing or the digital data, only figured dimensions are to be used. Refer to linear scale for guidance. Check all dimensions on site prior to carrying out any works and advise any discrepancy

Status:PLANNING APPLICATION

KSR ARCHITECTS & INTERIOR DESIGNERS

KSR Architects LLP
14 Greenland Street
London NW1 0ND

mail@ksrarchitects.com
t: +44 (0)20 7692 5000
www.ksrarchitects.com

FLAT 2, 16 LYNDHURST GARDENS - HAMPSTEAD

PROPOSED SIDE ELEVATION

Date 19/12/2022

Scale:1:100 @A3

Drawn By:OC

Checked By:SC

Project Ref. 20041

Rev. -

Drawing No 2-PA-203

© KSR ARCHITECTS & INTERIOR DESIGNERS

GENERAL NOTES:

This drawing is copyright of KSR architects. This drawing must be read in conjunction with the Designer's Risk Assessment, specification and all other relevant documentation and drawings. KSR architects accept no liability for any expense, loss or damage of whatsoever nature and however arising from any variation made to this drawing or in the execution of the work to which it relates which has not been referred to them and their approval obtained. Areas are based on unchecked survey and are approximate only. Do not scale from this drawing or the digital data, only figured dimensions are to be used. Refer to linear scale for guidance. Check all dimensions on site prior to carrying out any works and advise any discrepancy

Materials:

- 1 Bronzed metal aluminium roof
- 2 Wooden Slats
- 3 Light-bronze window frame
- 4 Light-bronze aluminium
- 5 Existing red brick
- 6 Parapet to match existing red-brick
- 7 Glass
- 8 Wood
- 9 Metal balustrade
- 10 Metal balustrade with wood handle

Existing brick wall retained

Rain pipe finish to match bronze material

Existing metal balustrade style on boundary wall

Lightwell staircase metal balustrade with wood handle



1:50@ A3 - PROPOSED REAR ELEVATION



Status:PLANNING APPLICATION

KSR ARCHITECTS & INTERIOR DESIGNERS
KSR Architects LLP
14 Gower Street
London WC1E 6BT
020 7464 0000
www.ksrarchitects.com

FLAT 2, 16 LYNHURST GARDENS - HAMPSTEAD

PROPOSED REAR ELEVATION - MATERIALS

Date 19/12/2022 Scale:1:50 @A3

Drawn By:OC Checked By:RS

Project Ref. 20041
Drawing No 2-PA-204



GENERAL NOTES:

This drawing is copyright of KSR architects. This drawing must be read in conjunction with the Designer's Risk Assessment, specification and all other relevant documentation and drawings. KSR architects accept no liability for any expense, loss or damage of whatsoever nature and however arising from any variation made to this drawing or in the execution of the work to which it relates which has not been referred to them and their approval obtained. Areas are based on unchecked survey and are approximate only. Do not scale from this drawing or the digital data, only figured dimensions are to be used. Refer to linear scale for guidance. Check all dimensions on site prior to carrying out any works and advise any discrepancy

Materials:

- 1 Bronzed metal aluminium roof
- 2 Wooden Slats
- 3 Light-bronze window frame
- 4 Light-bronze aluminium
- 5 Existing red brick
- 6 Parapet to match existing red-brick
- 7 Glass
- 8 Wood
- 9 Metal balustrade
- 10 Metal balustrade with wood handle

Status: PLANNING APPLICATION

KSR ARCHITECTS &
INTERIOR DESIGNERS

KSR Architects LLP
14 Greenland Street
London NW1 0ND
mail@ksrarchitects.com
t: +44 (0)20 7692 5000
www.ksrarchitects.com

FLAT 2, 16 LYNTHURST GARDENS - HAMPSTEAD

**PROPOSED SIDE ELEVATION -
MATERIALS**

Date: 19/12/2022

Scale: 1:50 @A3

Drawn By: OC

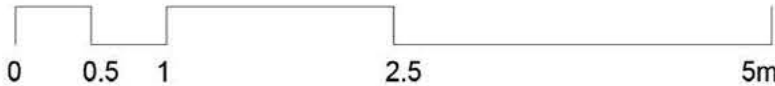
Checked By: SC

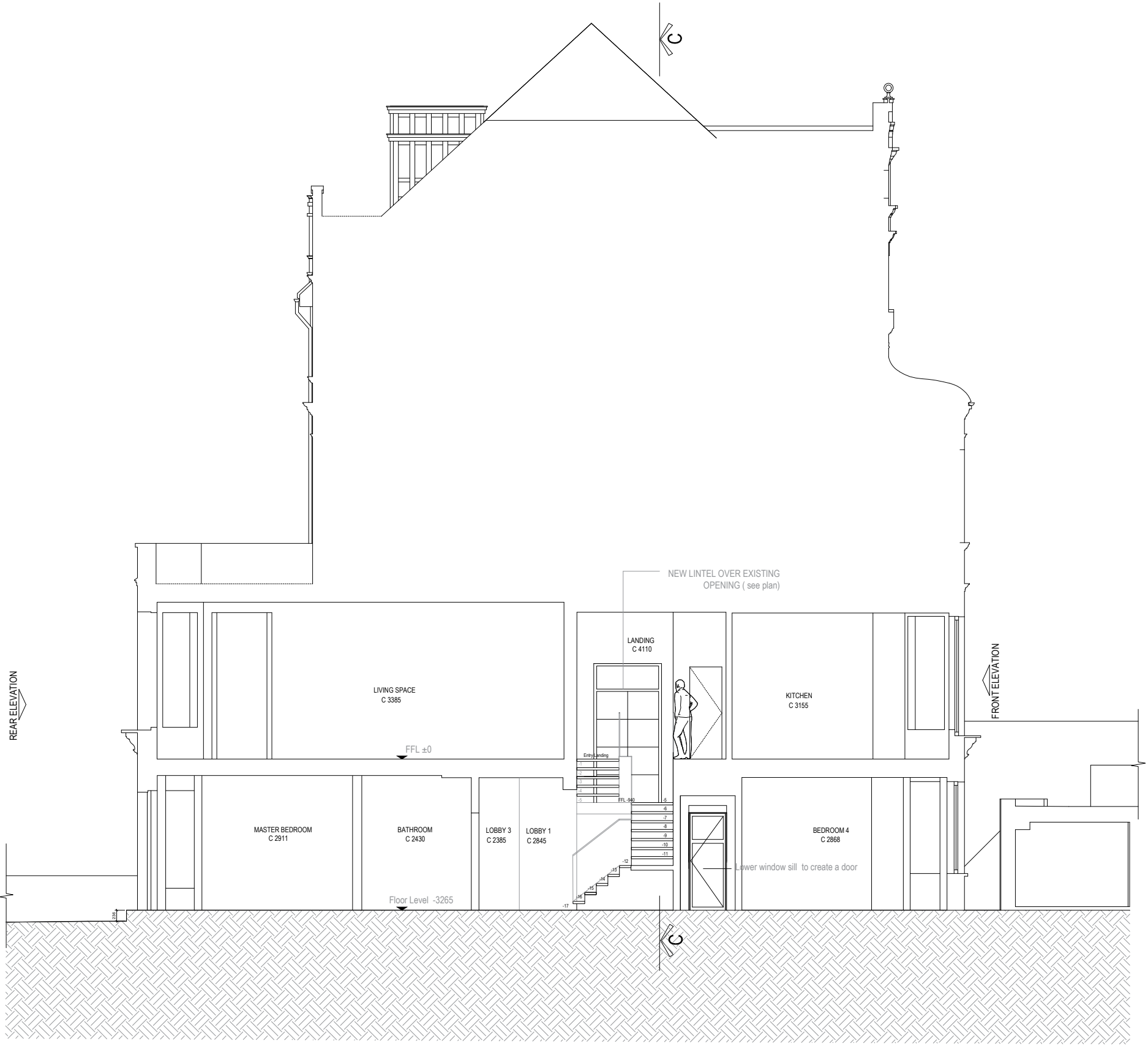
Project Ref. 20041

Rev. C

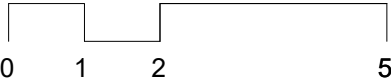
Drawing No 2-PA-205

© KSR ARCHITECTS & INTERIOR DESIGNERS 4





1:100@ A3



GENERAL NOTES:

This drawing is copyright of KSR architects. This drawing must be read in conjunction with the Designer's Risk Assessment, specification and all other relevant documentation and drawings. KSR architects accept no liability for any expense, loss or damage of whatsoever nature and however arising from any variation made to this drawing or in the execution of the work to which it relates which has not been referred to them and their approval obtained. Areas are based on unchecked survey and are approximate only. Do not scale from this drawing or the digital data, only figured dimensions are to be used. Refer to linear scale for guidance. Check all dimensions on site prior to carrying out any works and advise any discrepancy

Status:PLANNING APPLICATION

KSR ARCHITECTS &
INTERIOR DESIGNERS
KSR Architects LLP mail@ksrarchitects.com
14 Greenland Street t: +44 (0)20 7692 5000
London NW1 0ND www.ksrarchitects.com

FLAT 2, 16 LYNTHURST GARDENS - HAMPSTEAD

PROPOSED SECTION AA

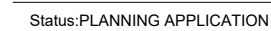
Date 19/12/2022 Scale:1:100 @A3

Drawn By:OC Checked By:SC

Project Ref. 20041 Rev. -
Drawing No 3-PA-301

© KSR ARCHITECTS & INTERIOR DESIGNERS

This drawing is copyright of KSR architects. This drawing must be read in conjunction with the Designer's Risk Assessment, specification and all other relevant documentation and drawings. KSR architects accept no liability for any expense, loss or damage of whatsoever nature and however arising from any variation made to this drawing or in the execution of the work to which it relates which has not been referred to them and their approval obtained. Areas are based on unchecked survey and are approximate only. Do not scale from this drawing or the digital data, only figured dimensions are to be used. Refer to linear scale for guidance. Check all dimensions on site prior to carrying out any works and advise any discrepancy



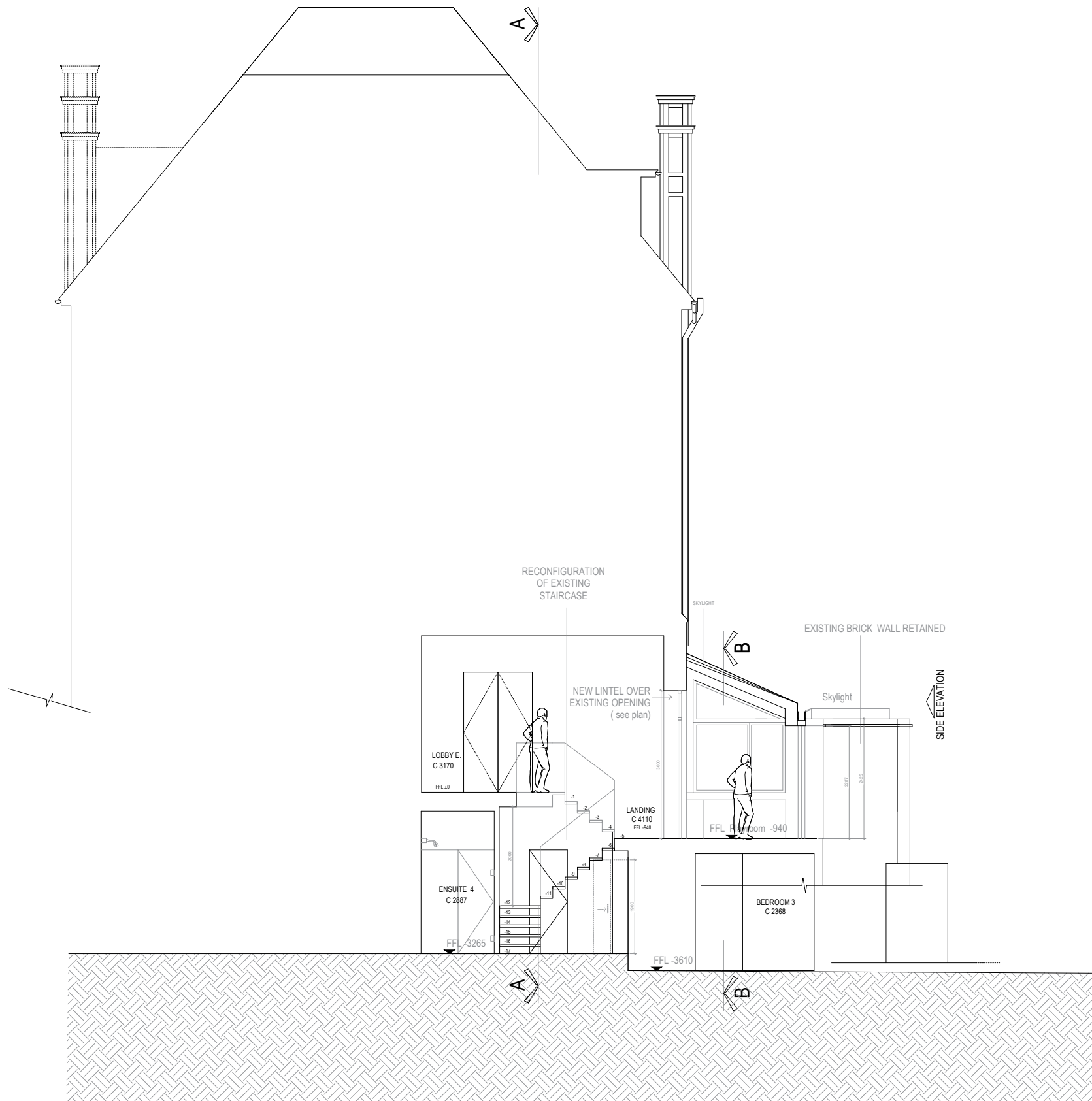
KSR Architects LLP
14 Greenland Street
London NW1 0ND
mail@ksrarchitects.com
t: +44 (0)20 7692 5000
www.ksrarchitects.com

PROPOSED SECTION BB

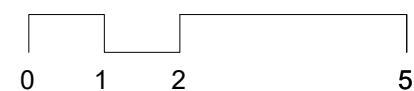
Drawn By:OC Checked By:SC

Project Ref. 20041 Rev. -
Drawing No 3-PA-302

© KSR ARCHITECTS & INTERIOR DESIGNERS



1:100@ A3



GENERAL NOTES:

This drawing is copyright of KSR architects. This drawing must be read in conjunction with the Designer's Risk Assessment, specification and all other relevant documentation and drawings. KSR architects accept no liability for any expense, loss or damage of whatsoever nature and however arising from any variation made to this drawing or in the execution of the work to which it relates which has not been referred to them and their approval obtained.

Areas are based on unchecked survey and are approximate only. Do not scale from this drawing or the digital data, only figured dimensions are to be used. Refer to linear scale for guidance.

Check all dimensions on site prior to carrying out any works and advise any discrepancy

Status:PLANNING APPLICATION

KSR ARCHITECTS &
INTERIOR DESIGNERS

KSR Architects LLP
14 Greenland Street
London NW1 0ND

mail@ksrarchitects.com
t: +44 (0)20 7692 5000
www.ksrarchitects.com

FLAT 2, 16 LYNTHURST GARDENS - HAMPSTEAD

PROPOSED SECTION CC

Date 19/12/2022

Scale:1:100 @A3

Drawn By:OC

Checked By:SC

Project Ref. 20041

Rev. -

Drawing No 3-PA-303

© KSR ARCHITECTS & INTERIOR DESIGNERS