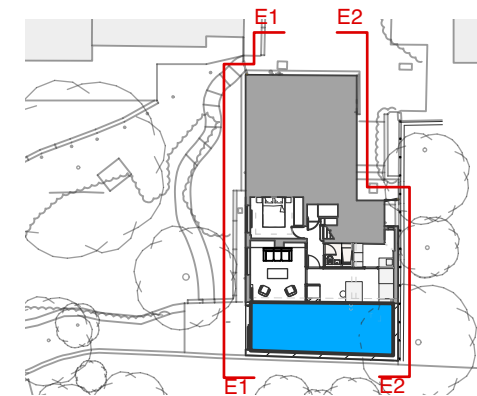
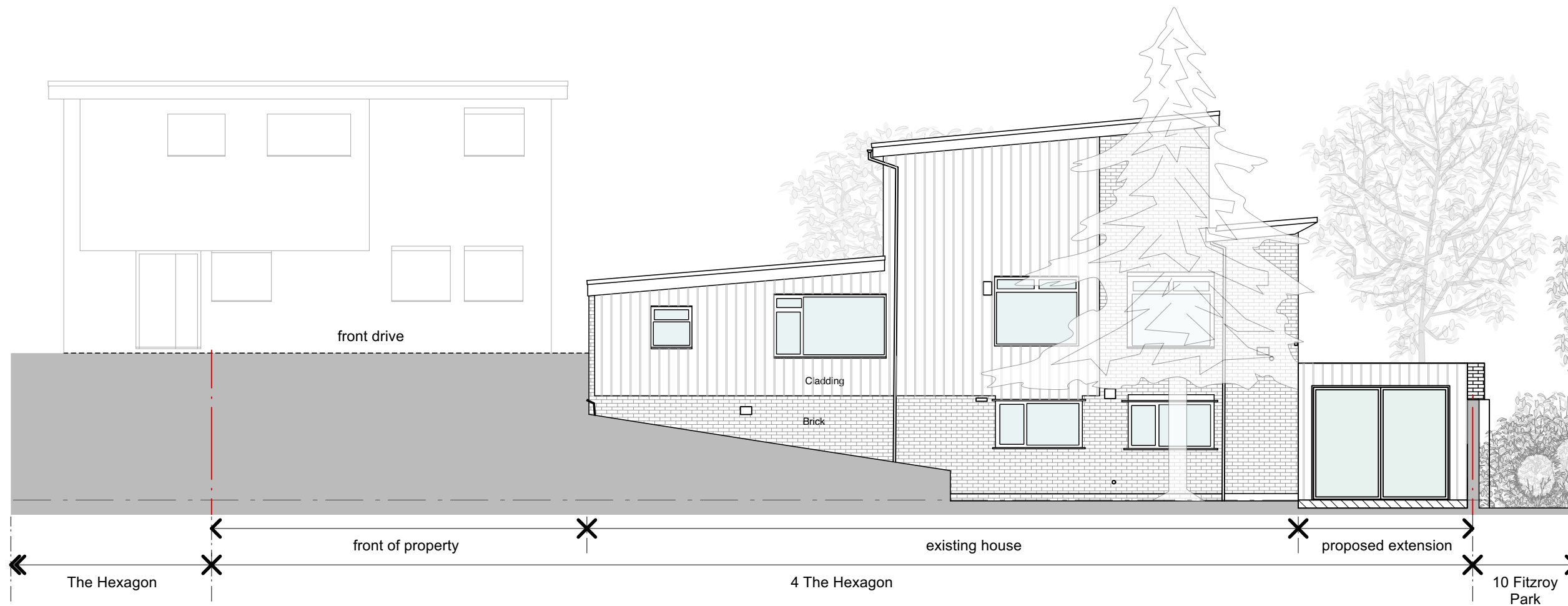


GENERAL NOTES

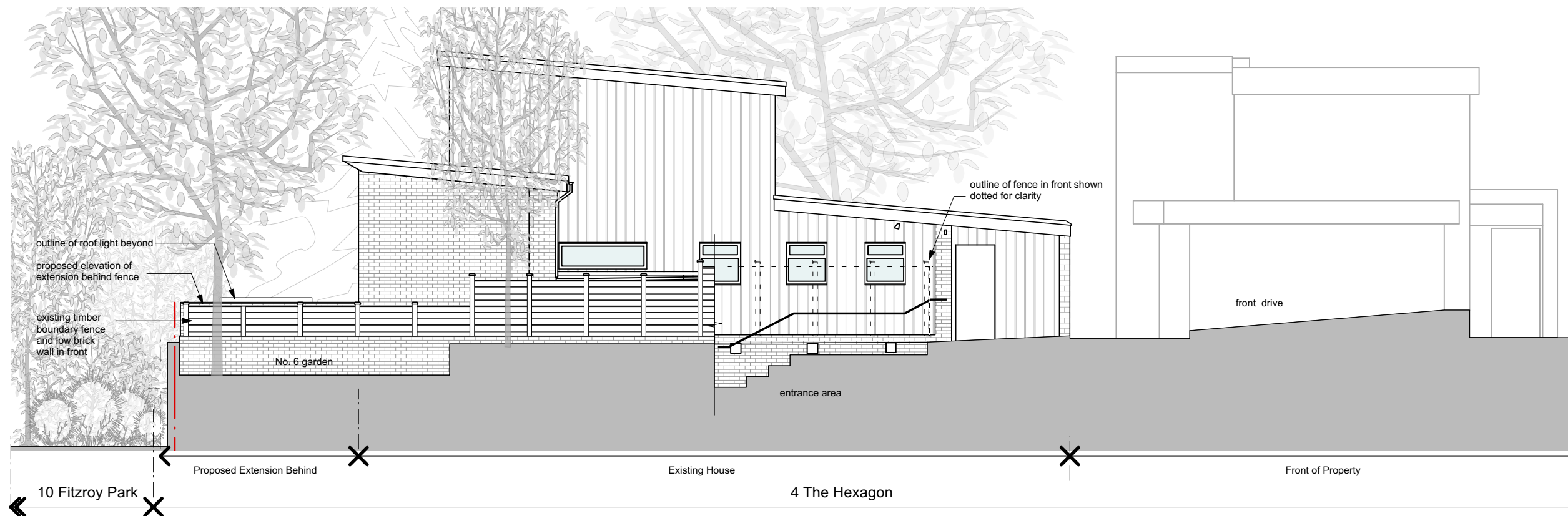
All dimensions to be checked on site before commencement of any works, and/or preparation of any shop drawings. Sizes of and dimensions to any structural elements are indicative only. Refer to structural engineers drawings for sizes/specs of structural elements. Sizes of and dimensions to any service elements are indicative only. Refer to service engineers drawings for actual sizes and dimensions. This drawing to be read in conjunction with all relevant Architect's drawings, specifications and other Consultants' information.



Key Plan



Elevation/Section 1



Elevation/Section 2

